

STATE OF ILLINOIS
DEPARTMENT OF TRANSPORTATION
DIVISION OF HIGHWAYS

**PROPOSED
HIGHWAY PLANS**

VARIOUS ROUTES
DIST 8 WEED SPRAYING 2017-1
VARIOUS COUNTIES

INDEX OF SHEETS

1. COVER SHEET, INDEX OF SHEETS, LOCATON MAP
2. STANDARDS, SPRAY SCHEDULE, AND COMMITMENTS
3. SUMMARY OF QUANTITIES
- 4.-7. OMISSIONS/NO SPRAY SITES

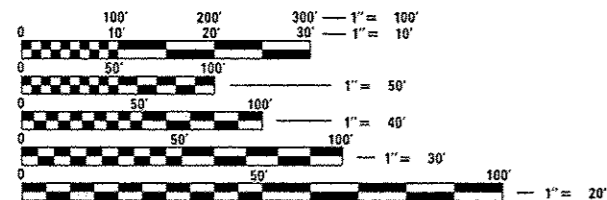
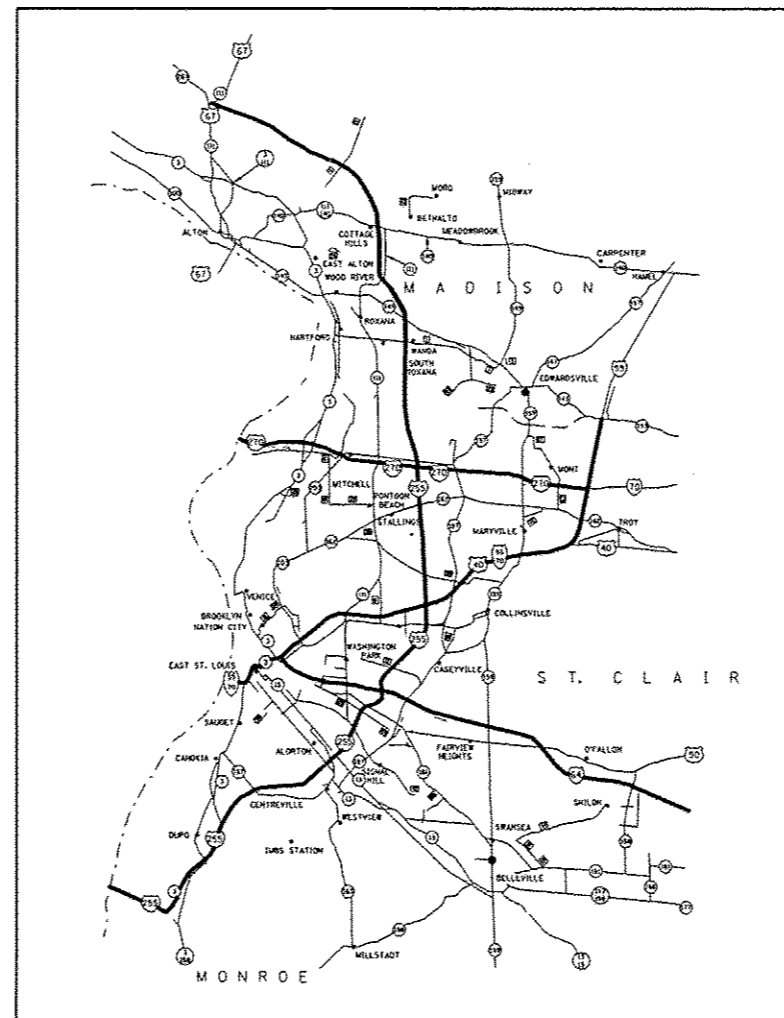
F.A. RTE.	SECTION	COUNTY	TOTAL SHEETS	SHEET NO.
*	**	ILLINOIS	VARIOUS	7
			CONTRACT NO.	76J93

* VARIOUS
** DIST 8 WEED SPRAYING 2017-1

D-98-008-17



C-98-002-17



FULL SIZE PLANS HAVE BEEN PREPARED USING STANDARD ENGINEERING SCALES. REDUCED SIZED PLANS WILL NOT CONFORM TO STANDARD SCALES. IN MAKING MEASUREMENTS ON REDUCED PLANS, THE ABOVE SCALES MAY BE USED.

J.U.L.I.E.
JOINT UTILITY LOCATION INFORMATION FOR EXCAVATION
1-800-892-0123
OR 811

PROJECT LEADER: BILLIE OWEN (618) 346-3209
SQUAD CONTACT: KEVIN LEWIS (618) 346-3145

CONTRACT NO. 76J93

STATE OF ILLINOIS
DEPARTMENT OF TRANSPORTATION
DIVISION OF HIGHWAYS

SUBMITTED *Aug 19 2016*

Jeffrey K. ...
DEPUTY DIRECTOR OF HIGHWAYS, REGION ENGINEER

Sept 30 2016
Maureen M. Addis PE
ENGINEER OF DESIGN AND ENVIRONMENT

Sept 30 2016
... 2
DIRECTOR OF PROGRAM DEVELOPMENT

PRINTED BY THE AUTHORITY
OF THE STATE OF ILLINOIS

STANDARDS

701001-02
 701006-05
 701101-05
 701106-02
 701301-04
 701426-08
 701901-05

COMMITMENTS
 NONE

DISTRICT 8 WEED SPRAYING 2016-1			
COUNTY	ROUTE	MILES	ACRES
MADISON	FAI 55/70	30	182
	FAI 270	22	133
	FAI 255*	21	127
	ROUTE 255*	52	315
	FAI 55	20	121
ST. CLAIR	FAI 64	26	158
	FAI 255*	35	212
MONROE	FAI 255*	20	121
TOTAL		226	1370

50' SWATH
 *TO INCLUDE MEDIANS WHERE FEASIBLE

IT IS ESTIMATED THAT THE CONTRACTOR WILL NEED 55 GALLONS OF "METHOD", OR APPROVED EQUIVALENT, 55 GALLONS OF "MILESTONE", OR APPROVED EQUIVALENT, AND 30 POUNDS OF "ESCORT", OR APPROVED EQUIVALENT FOR HERBICIDE SPRAYING. OFF ROAD AND ON ROAD QUANTITIES ARE APPROXIMATE AND ARE SUBJECT TO CHANGE.

FILE NAME = p:\IL\804EBID\INTEG\Illinois.gov\PI00T\Documents\DOT Office\District 8\Projects\087-00\08700Data\CAD\Sheet\0876J93-sht-plan.dwg	USER NAME = lawisko	DESIGNED -	REVISED -	STATE OF ILLINOIS DEPARTMENT OF TRANSPORTATION	STANDARDS, SPRAY SCHEDULE, AND COMMITMENTS	F.A. RTE.	SECTION	COUNTY	TOTAL SHEETS	SHEET NO.
	PLOT SCALE = 100.0000' / 1" =	CHECKED -	REVISED -			*	**	MADISON	7	2
	PLOT DATE = 8/19/2016	DATE -	REVISED -			CONTRACT NO. 76J93		ILLINOIS FED. AID PROJECT		
Default				SCALE:	SHEET OF SHEETS	STA.	TO STA.			

* VARIOUS
 ** DIST 8 WEED SPRAYING 2017-1

2105 8 8 AM

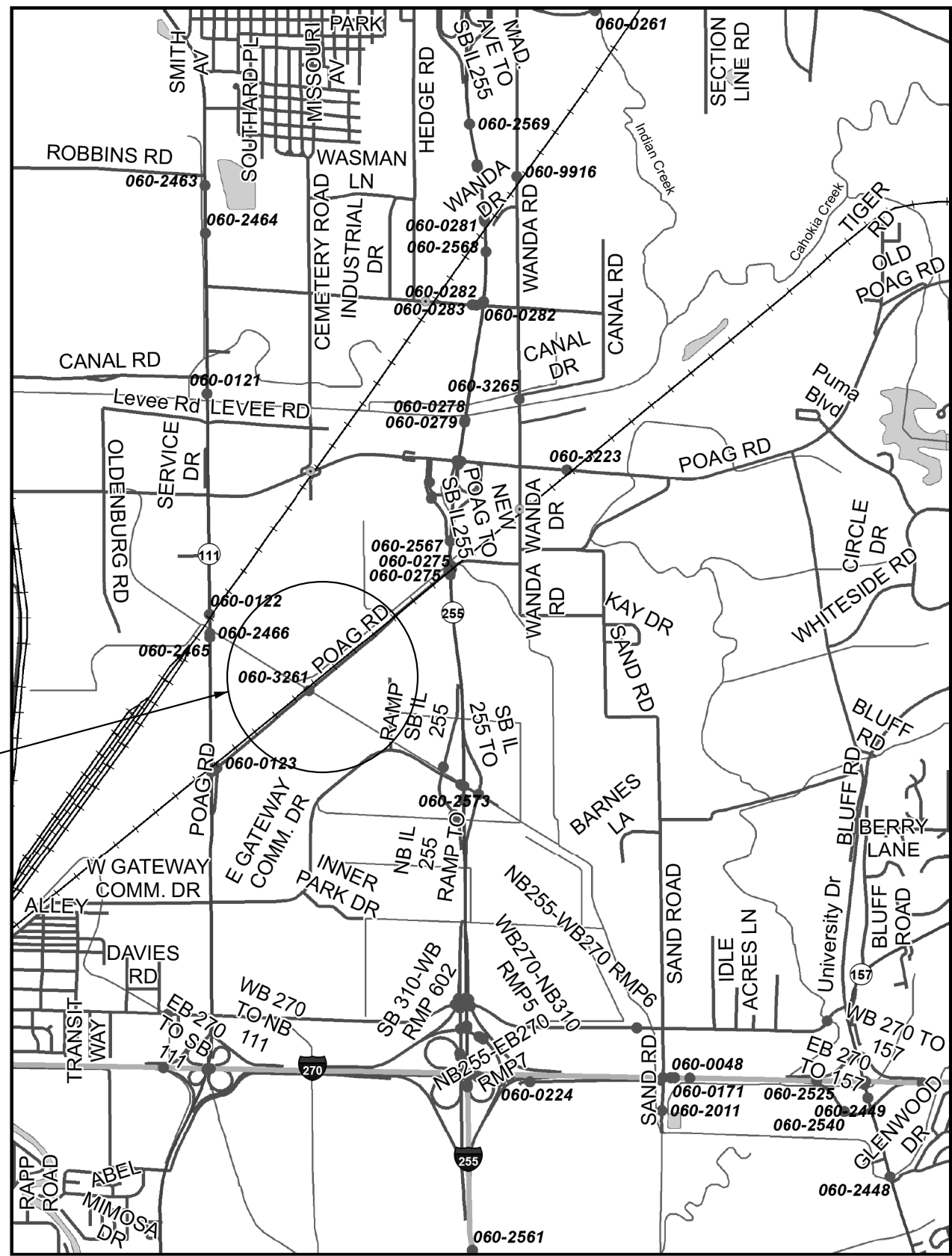
100% STATE
CONSTR. CODE

CODE NO.	ITEM	UNIT	TOTAL QUANTITY	CONSTR. CODE
				0031
67100100	MOBILIZATION	LSUM	1	1
K0012950	HERBICIDE SPRAYING	ACRE	1370	1370

2

FILE NAME =	USER NAME = jowisko	DESIGNED -	REVISED -	STATE OF ILLINOIS DEPARTMENT OF TRANSPORTATION	SUMMARY OF QUANTITIES	P.A. RTE.	SECTION	COUNTY	TOTAL SHEETS	SHEET NO.
pm\11884EBIDINTE\illinois.gov\PWIDOT\Documents\DOT Office\District 8\Projects\087-000000\087-000000\CAD\Sheets\0876J93-sht-plan.dwg	CHECKED -	REVISED -	*			**	MADISON	7	3	
PLOT SCALE = 100.0000' / in	DATE -	REVISED -	CONTRACT NO. 76J93			ILLINOIS FED. AID PROJECT				
Default	PLOT DATE = 8/19/2016	REVISED -	SCALE:			SHEET OF SHEETS	STA. TO STA.			

* VARIOUS
** DIST 8 WEED SPRAYING 2017-1

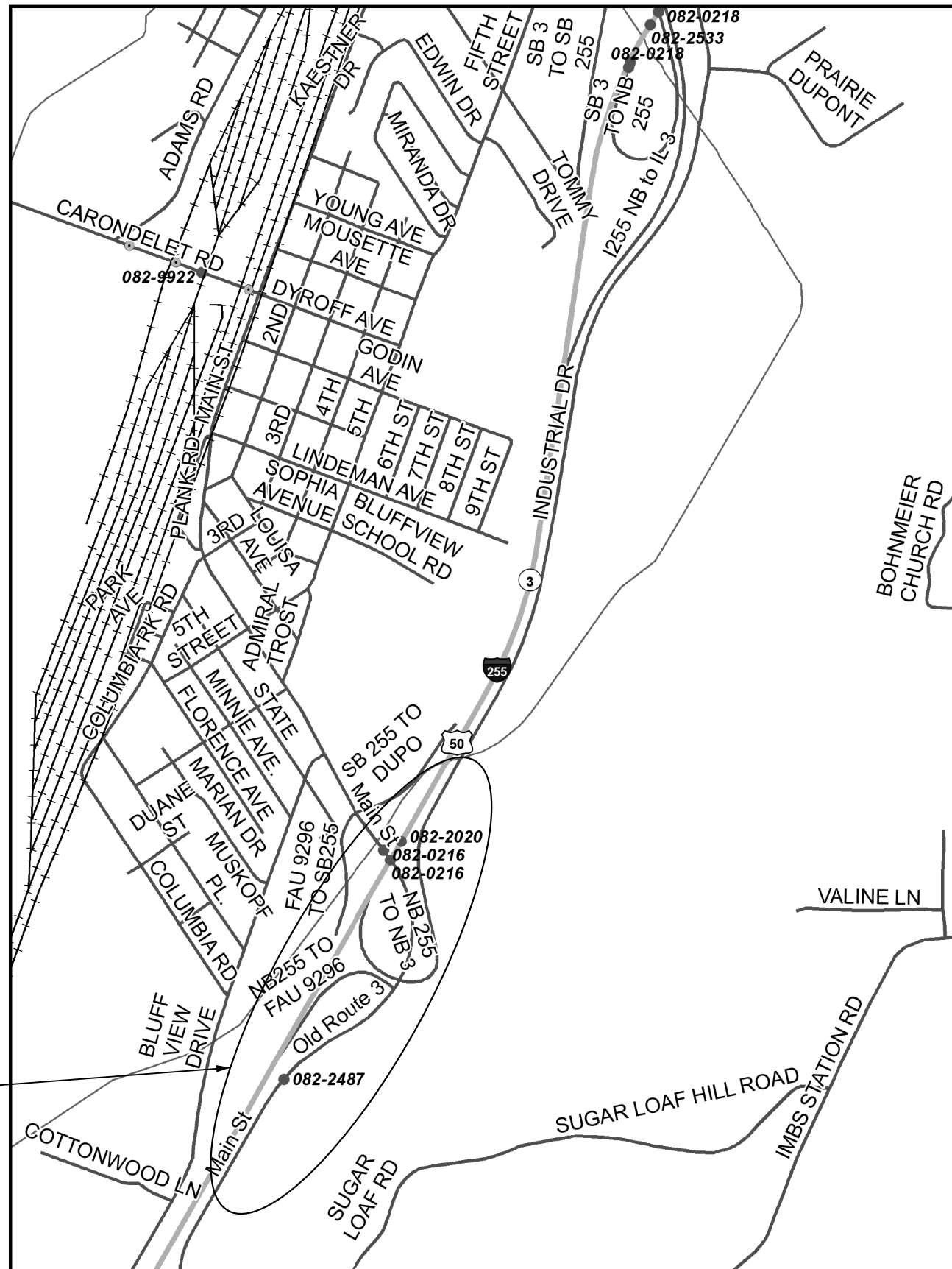


DO NOT SPRAY

MADISON COUNTY
POAG R.R. PRAIRIE
SECTION 24, T4N-R9W

- VARIOUS
- DIST 8 WEED SPRAYING 2017-1

FILE NAME =	USER NAME = lewiska	DESIGNED -	REVISED -	STATE OF ILLINOIS DEPARTMENT OF TRANSPORTATION	OMISSONS CHOUTEAU & GRANITE CITY TOWNSHIP	SCALE:	SHEET	OF	SHEETS	STA.	TO	STA.	RT.	SECTION	COUNTY	TOTAL SHEETS	SHEET NO.		
pw:\IL\084EBIDINTEG\Illinois.gov\PIDOT\Documents\IDOT Offices\District 8\Projects\0876\DRAWING\084EBIDINTEG\084EBIDINTEG.dwg		DRAWN	REVISED			•	••											7	5
Default		CHECKED	REVISED			CONTRACT NO. 76J93													
	PLOT DATE = 8/18/2016	DATE	REVISED			ILLINOIS FED. AID PROJECT													



DO NOT SPRAY

ST. CLAIR COUNTY
 DUPO PRAIRIE/SUGAR LOAF PRAIRIE
 SECTION 27 & 28, T1N-R10W

- VARIOUS
- DIST 8 WEED SPRAYING 2017-1

FILE NAME =	USER NAME = lewiska	DESIGNED -	REVISED -
pw:\IL\084EBID\INTEG\illinois.gov\PWIDOT\Documents\DOT Offices\District 8\Projects\0876\DRAWING\DATA\60\Sheets\0876J93-sht-plandg		REVISIONS	REVISIONS
Default	PLOT SCALE = 100.0000' / in.	CHECKED -	REVISED -
	PLOT DATE = 8/18/2016	DATE -	REVISED -

STATE OF ILLINOIS
 DEPARTMENT OF TRANSPORTATION

OMISSIONS			
SUGAR LOAF TOWNSHIP			
SCALE:	SHEET	OF SHEETS	STA. TO STA.

F.A. RTE.	SECTION	COUNTY	TOTAL SHEETS	SHEET NO.
•	••	MADISON	7	6
			CONTRACT NO. 76J93	
ILLINOIS FED. AID PROJECT				

