

STATE OF ILLINOIS
DEPARTMENT OF TRANSPORTATION

EXISTING STRUCTURE:

S.N. 071-0066 was built in 1981 and consists of fifteen (15) simple spans of P.P.C. I-Beams. The Substructure consists of closed abutments and fourteen (14) hammerhead piers.

SALVAGE:

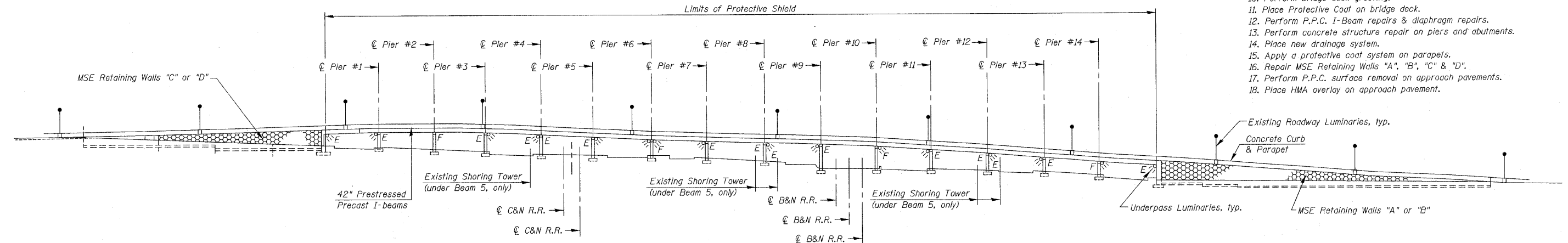
Shoring Towers shall be salvaged and returned to District 2 Bridge maintenance yard. Cost included with Concrete Removal.

NOTE:

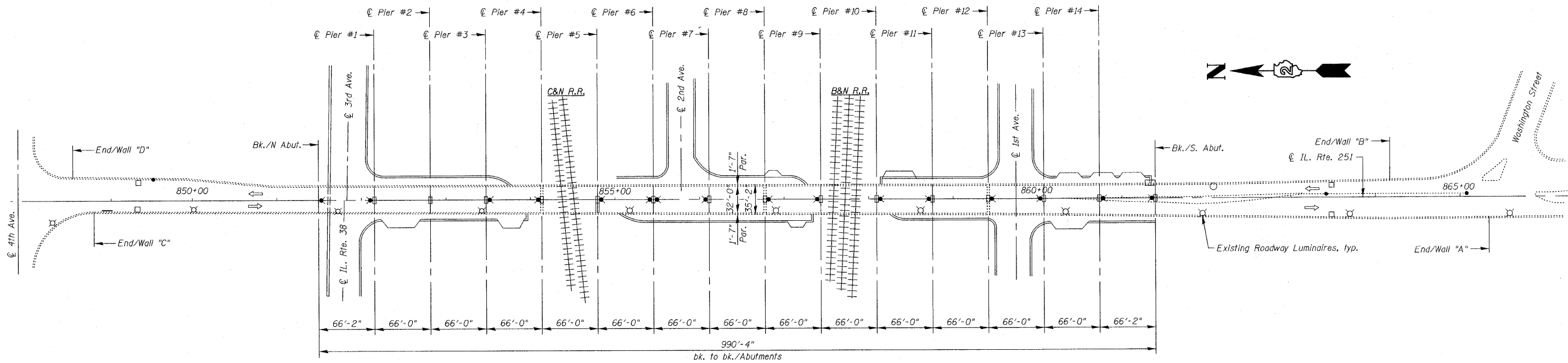
During bridge repairs, traffic will be detoured, see Detour Plans

SCOPE OF WORK:

1. Close bridge and detour traffic.
2. Jack beams & replace all bearings at N. Abutment & S. Abutment.
3. Install System to jack existing superstructure at Piers #4, #8 & #12.
4. Replace pier caps and install new bearings at Piers #4, #8 & #12.
5. Remove & replace all expansion joints.
6. Perform parapet repairs.
7. Perform bridge deck scarification.
8. Perform full depth deck repair & install new scuppers.
9. Place Microsilica overlay on bridge deck.
10. Perform bridge deck grooving.
11. Place Protective Coat on bridge deck.
12. Perform P.P.C. I-Beam repairs & diaphragm repairs.
13. Perform concrete structure repair on piers and abutments.
14. Place new drainage system.
15. Apply a protective coat system on parapets.
16. Repair MSE Retaining Walls "A", "B", "C" & "D".
17. Perform P.P.C. surface removal on approach pavements.
18. Place HMA overlay on approach pavement.



ELEVATION



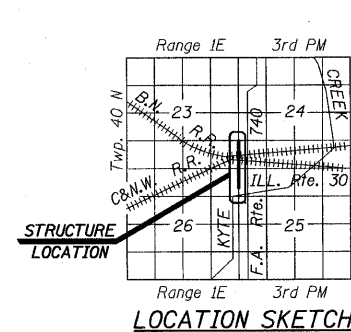
PLAN

LOADING HS20-44

DESIGN SPECIFICATIONS
AASHTO 2002 Standard Specifications For Highway Bridges

DESIGN STRESSES

$f'_c = 3,500 \text{ psi}$
 $f_y = 60,000 \text{ psi (Reinforcement)}$



LOCATION SKETCH



Bhadresh N. Shah
03/16/2010
BHADRESH N. SHAH
LICENSED STRUCTURAL ENGINEER
STATE OF ILLINOIS LIC. No. 081-004476
EXPIRES: 11-30-10

GENERAL PLAN & ELEVATION
IL. RTE. 251 OVER IL. RTE. 38
C&NW R.R. AND B.N. R.R.
F.A.P. RTE. 740 (IL. RTE. 251)
SECTION (108HVB)M
OGLE COUNTY
STA. 856+44.00
STRUCTURE NO. 071-0066

DESIGNED -	2010
CHECKED -	EXAMINED
DRAWN -	PASSED
CHECKED -	ENGINEER OF BRIDGES AND STRUCTURES

ENGINEER OF BRIDGE DESIGN
ENGINEER OF BRIDGES AND STRUCTURES

SHEET NO. S1	F.A.P. RTE. 740	SECTION (108HVB)M	COUNTY OGLE	TOTAL SHEETS 55	SHEET NO. 8
S43 SHEETS	CONTRACT NO. 64G24			ILLINOIS FED. AID PROJECT	

CHRISTIAN-BOGE & ASSOCIATES, INC.
ENGINEERS-PLANNERS-SURVEYORS
211 WEST WACKER DRIVE
CHICAGO, ILLINOIS 60606
PHONE: (312)372-2023 FAX: (312)372-5274