

STATE OF ILLINOIS  
DEPARTMENT OF TRANSPORTATION

GENERAL NOTES

1. Reinforcement bars shall conform to the requirements of ASTM A 706 Gr 60. See Special Provisions.
2. Reinforcement bars designated (E) shall be epoxy coated.
3. Layout of slope protection system may be varied to suit ground conditions in the field as directed by the Engineer.
4. The Contractor shall make allowance for the deflection of forms, shrinkage and settlement of falsework, in addition to allowance for dead load deflection. Forms for deck slab shall be removed prior to placement of bridge approach slab.
5. Slip forming of the parapets is not allowed.

TOTAL BILL OF MATERIAL

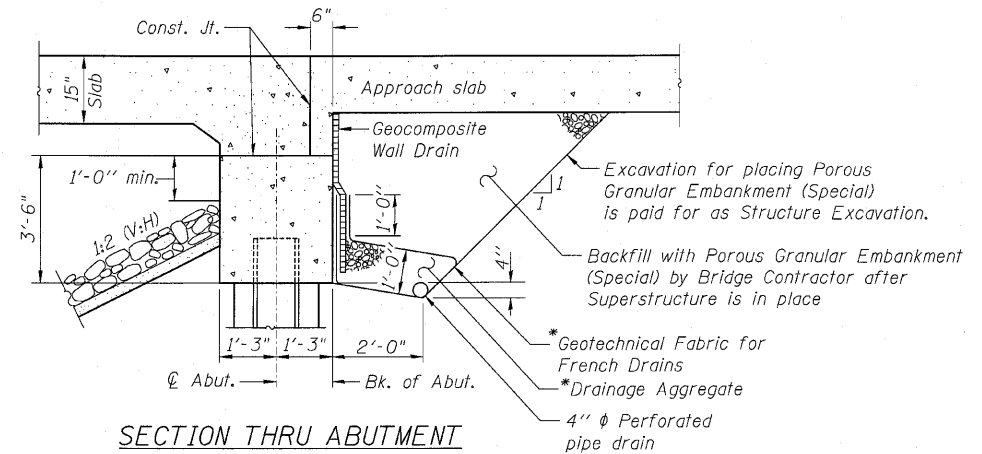
ITEM	UNIT	SUPER	SUB	TOTAL
Porous Granular Embankment, Special	Cu Yd	-	64	64
Stone Riprap, Class A4	Sq Yd	-	744	744
Filter Fabric	Sq Yd	-	744	744
Removal of Existing Structures	Each	-	-	1
Structure Excavation	Cu Yd	-	120	120
Floor Drains	Each	6	-	6
Concrete Structures	Cu Yd	20.8	124.6	145.4
Concrete Superstructure	Cu Yd	288.7	-	288.7
Bridge Deck Grooving	Sq Yd	504	-	504
Concrete Encasement	Cu Yd	-	9.8	9.8
Protective Coat	Sq Yd	536	11	547
Reinforcement Bars, Epoxy Coated	Pound	79,010	12,860	91,870
Bar Splicers	Each	418	108	526
Furnishing Steel Piles HP12x74	Foot	-	1,395	1,395
Driving Piles	Foot	-	1,395	1,395
Test Pile Steel HP12x74	Each	-	1	1
Pile Shoes	Each	-	28	28
Name Plates	Each	1	-	1
Geocomposite Wall Drain	Sq Yd	-	33	33
Pipe Underdrains For Structures 4"	Foot	-	140	140
Temporary Soil Retention System	Sq Ft	-	96.6	96.6
Underwater Structure Excavation Protection Location 1	Each	-	1	1
Underwater Structure Excavation Protection Location 2	Each	-	1	1
Asbestos Bearing Pad Removal	Each	36	36	72

INDEX OF SHEETS

1. General Plan and Elevation
2. General Data
3. Stage Construction Details
4. Temporary Concrete Barrier for Stage Construction
5. Top of Slab Elevations
6. Top of West Approach Slab Elevations
7. Top of East Approach Slab Elevations
8. Superstructure
9. Superstructure Details
10. Superstructure Details
11. Bridge Approach Slab Details
12. Bridge Approach Slab Details
13. West Abutment
14. East Abutment
15. Pier 1
16. Pier 2
17. Bar Splicer Assembly and Mechanical Splicer Details
18. HP Pile Details
19. Soil Borings
20. Soil Borings

STATION 163+53.00  
BUILT 2010 BY  
STATE OF ILLINOIS  
F.A.P. RT. 681 SEC. 118BR  
LOADING HL-93  
STR NO. 038-0221

NAME PLATE  
See Std. 515001



\* Included in the cost of Pipe Underdrains for Structures

Note:  
All drainage system components shall extend to 2'-0" from the end of each wingwall except an outlet pipe shall extend until intersecting with the side slopes. The pipes shall drain into concrete headwalls. (See Article 601.05 of the Standard Specifications and Highway Standard 601101).

GENERAL DATA  
STRUCTURE NO. 038-0221

SHEET NO. 2	F.A.P. RTE.	SECTION	COUNTY	TOTAL SHEETS	SHEET NO.
OF 20 SHEETS	681	118BR	IROQUOIS	42	11
			CONTRACT NO. 66861		
FED. ROAD DIST. NO. _			ILLINOIS	FED. AID PROJECT	