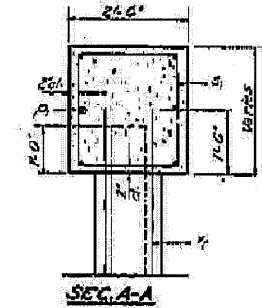
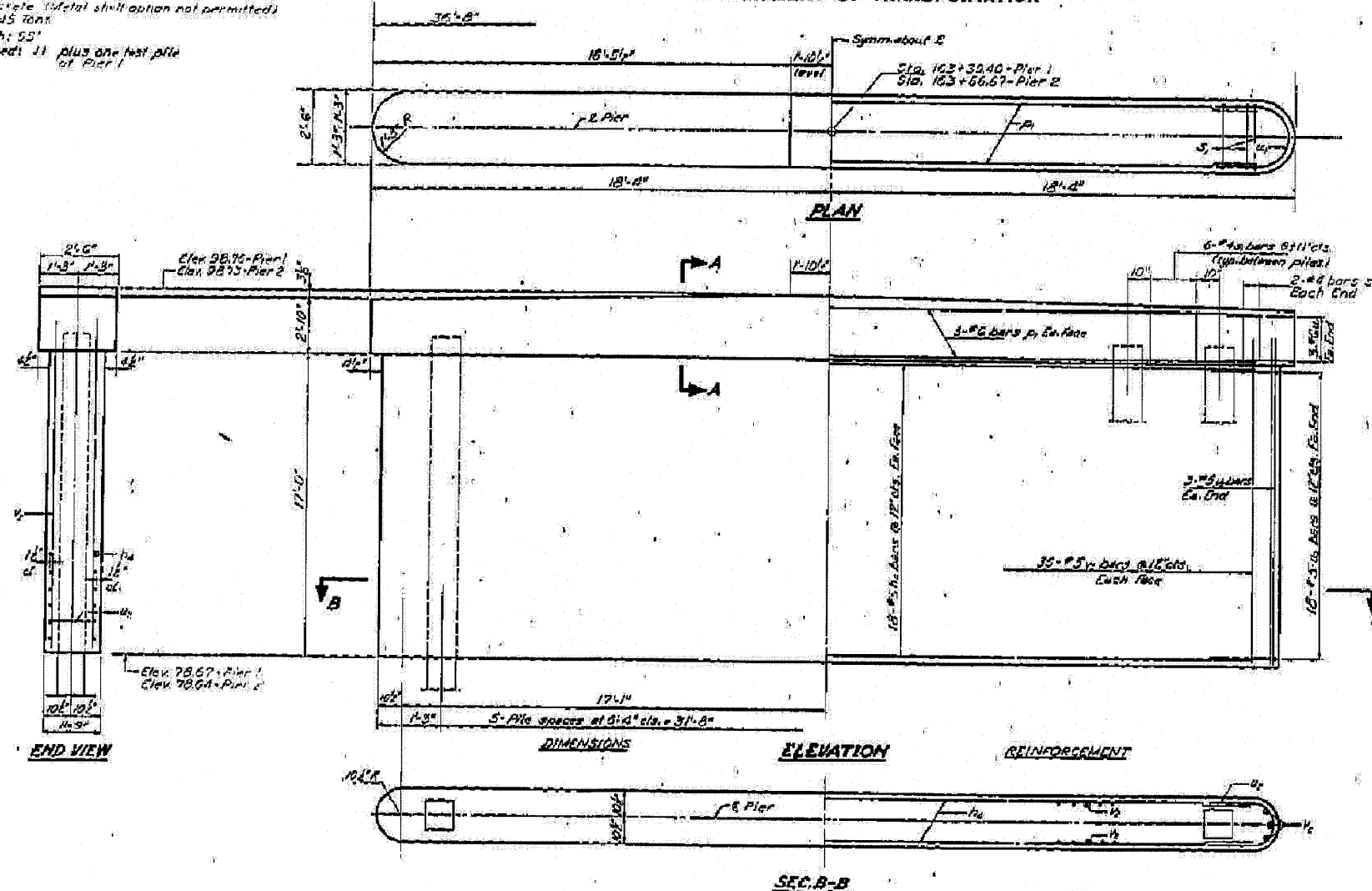


**PILE DATA**

Type: Concrete (Metal shell option not permitted)  
 Capacity: 45 tons  
 Est. length: 55'  
 No. required: 11 plus one test pile at Pier 1

STATE OF ILLINOIS  
 DEPARTMENT OF TRANSPORTATION

PROJECT NO.	SECTION	DATE	SHEET NO.	TOTAL SHEETS
118 BR	118 BR	13	7	6 SHEETS



Note:  
 All edges shall have 1/4" chamfers.

**TWO PIERS  
 BILL OF MATERIAL**

Bar No.	Size	Length	Shape
1a	#3	32'0"	—
1b	#6	34'0"	—
2	#6	10'4"	□
3a	#6	6'4"	—
3b	#5	2'4"	—
4a	#5	13'6"	—
Class 2 Concrete Cu-3kg 27.3			
Reinforcement Bars Lbs. 12670			
Concrete Piles Lbs. 600			
Test Pile (Concrete) Each 1			

DESIGNED: RAC  
 CHECKED: [Signature]  
 DRAWN: [Signature]  
 EXAMINED: [Signature]  
 PASSED: [Signature]  
 APPROVED: [Signature]

**PIERS 162  
 S.B.I. RT. 116 - SEC. 118X-BR  
 IROQUOIS COUNTY  
 STA. 163+53.00**

W-P-1 (3-15-77)