

MISCELLANEOUS CONCRETE

LOCATION	CU YD
CONCRETE COLLAR	0.14
CONCRETE HEADWALL	0.15
TOTAL	0.29
ROUNDED TOTAL	0.3

STORM SEWERS, SPECIAL, 6"  
LENGTH = 30'  
DSFL ELEV. = 784.00

PI STA. = 102+63.52  
Δ = 34° 33' 52" (RT)  
D = 114° 35' 30"  
R = 50.00'  
T = 15.56'  
L = 30.16'  
E = 2.36'  
P.C. STA = 102+47.97  
P.T. STA = 102+78.13

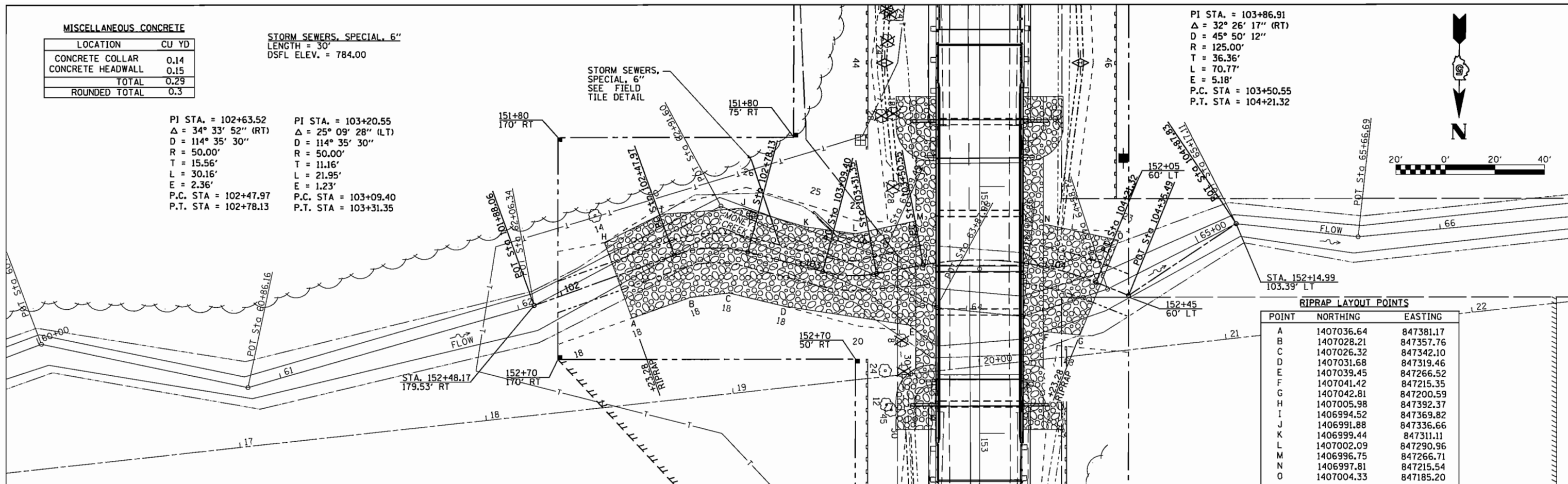
PI STA. = 103+20.55  
Δ = 25° 09' 28" (LT)  
D = 114° 35' 30"  
R = 50.00'  
T = 11.16'  
L = 21.95'  
E = 1.23'  
P.C. STA = 103+09.40  
P.T. STA = 103+31.35

PI STA. = 103+86.91  
Δ = 32° 26' 17" (RT)  
D = 45° 50' 12"  
R = 125.00'  
T = 36.36'  
L = 70.77'  
E = 5.18'  
P.C. STA = 103+50.55  
P.T. STA = 104+21.32



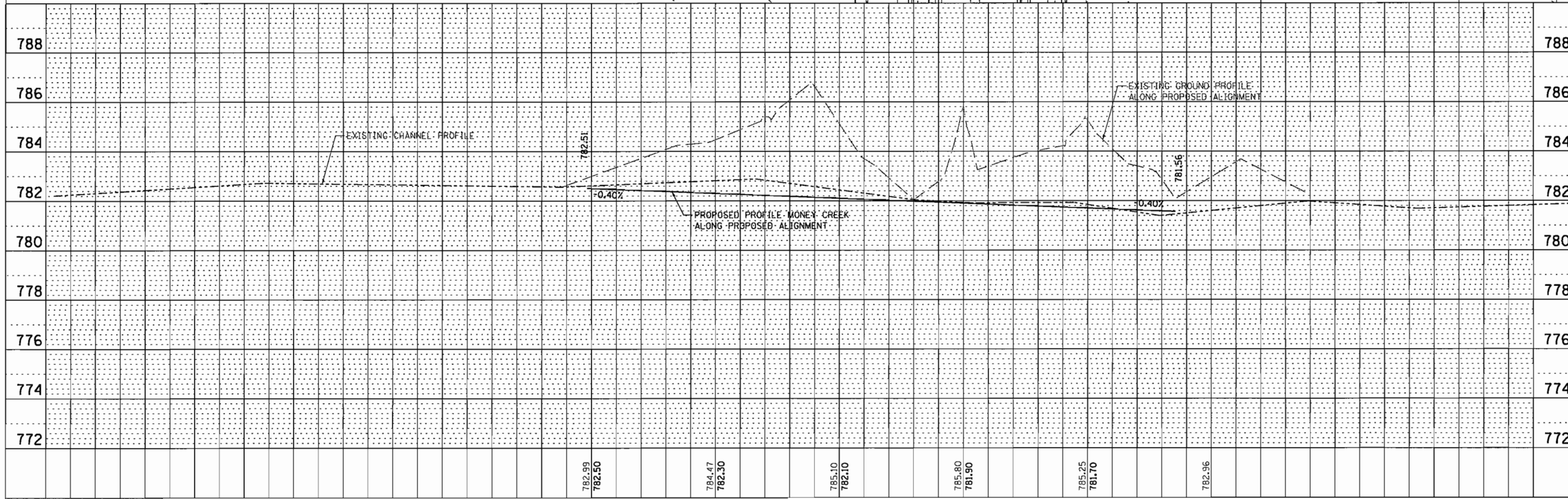
PLAN	DESIGNED	DATE
	BY	
	CHECKED	
	DATE	
	NO.	

PROFILE	DESIGNED	DATE
	BY	
	CHECKED	
	DATE	
	NO.	



RIPRAP LAYOUT POINTS

POINT	NORTHING	EASTING
A	1407036.64	847381.17
B	1407028.21	847357.76
C	1407026.32	847342.10
D	1407031.68	847319.46
E	1407039.45	847266.52
F	1407041.42	847215.35
G	1407042.81	847200.59
H	1407005.98	847392.37
I	1406994.52	847369.82
J	1406991.88	847336.66
K	1406999.44	847311.11
L	1407002.09	847290.96
M	1406996.75	847266.71
N	1406997.81	847215.54
O	1407004.33	847185.20



FILE NAME =	USER NAME = #USER#	DESIGNED - CWG	REVISED -	<b>STATE OF ILLINOIS DEPARTMENT OF TRANSPORTATION</b>	<b>MONEY CREEK PLAN &amp; PROFILE</b>	F.A.S. RTE.	SECTION	COUNTY	TOTAL SHEETS	SHEET NO.	
#FILE#		DRAWN -	REVISED -			2484	124BR-1	MCLEAN	55	12	
		CHECKED -	REVISED -			CONTRACT NO. 70612					
		DATE -	REVISED -			SCALE:	SHEET NO. 1 OF 1 SHEETS	STA. 100+00.00 TO STA. 105+04.35	FED. ROAD DIST. NO.	ILLINOIS	FED. AID PROJECT