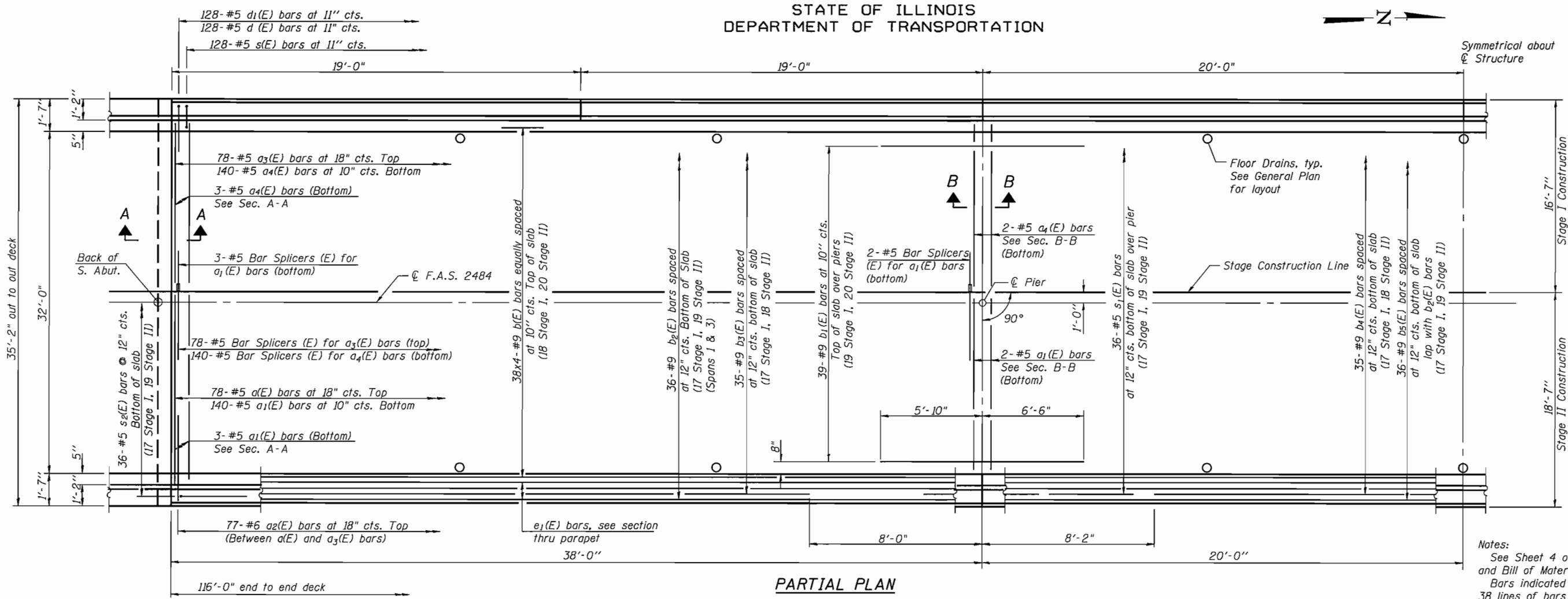
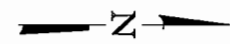


STATE OF ILLINOIS
DEPARTMENT OF TRANSPORTATION



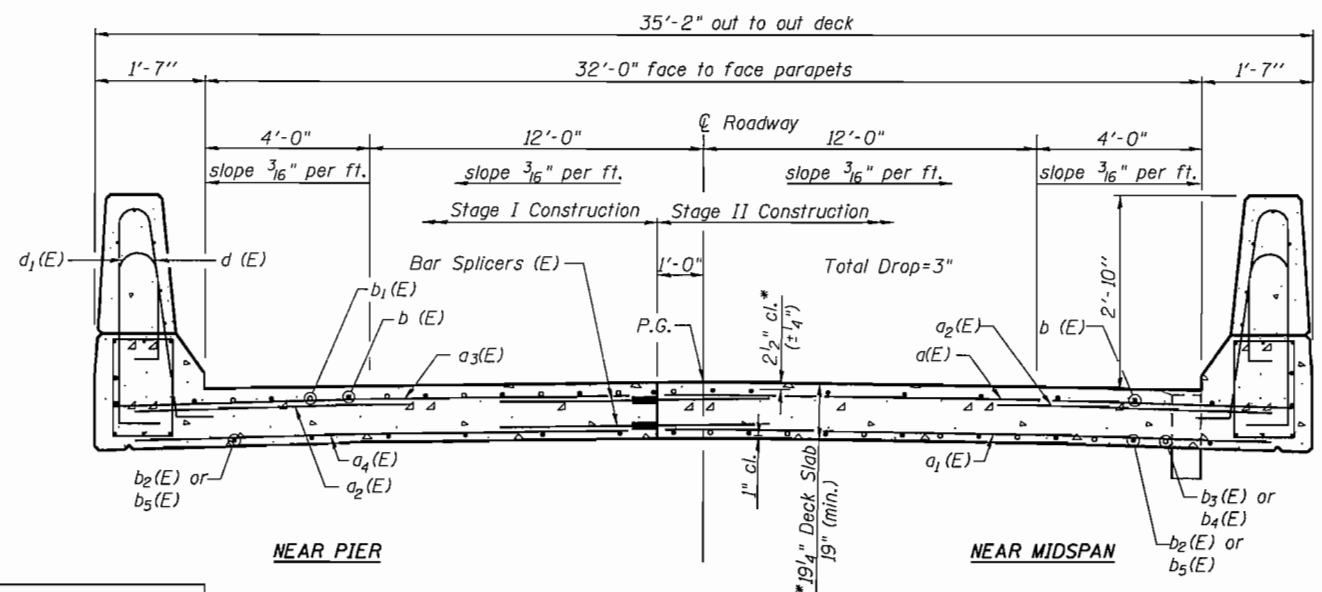
Symmetrical about
C Structure

35'-2" out to out deck

Stage I Construction
16'-7"
Stage II Construction
18'-7"

PARTIAL PLAN

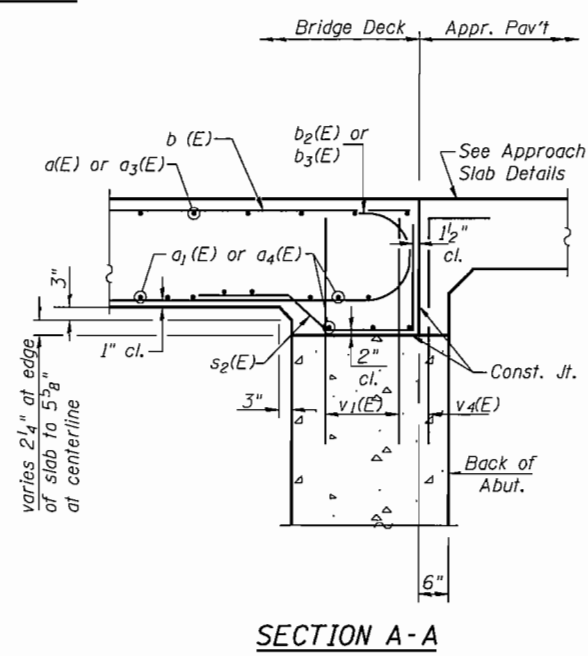
Notes:
See Sheet 4 of 17 for superstructure details and Bill of Material.
Bars indicated thus 38 x 4-#9 etc. indicates 38 lines of bars with 4 lengths per line.
See Sheet 4 of 17 for parapet reinforcement.



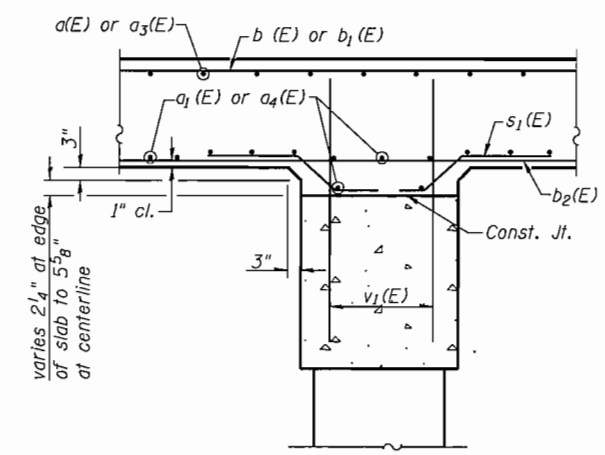
CROSS SECTION
(Looking North)

DESIGNED	PBB/SAL	200
CHECKED	RKM/MCB	EXAMINED
DRAWN	MLO	PASSED
CHECKED	PBB	ENGINEER OF BRIDGE DESIGN
		ENGINEER OF BRIDGES AND STRUCTURES

* Prior to Grinding



SECTION A-A



SECTION B-B

MINIMUM BAR LAP
(Deck Slab)
#9 bar = 5'-11" Top of Slab
#9 bar = 8'-9" Btm of Slab

**SUPERSTRUCTURE
STRUCTURE NO. 057-0248**

SHEET NO. 3 17 SHEETS	F.A.S. RTE. 2484	SECTION 124BR-1	COUNTY MCLEAN	TOTAL SHEETS 55	SHEET NO. 27
	CONTRACT NO. 70612				
FED. ROAD DIST. NO.		ILLINOIS FED. AID PROJECT			