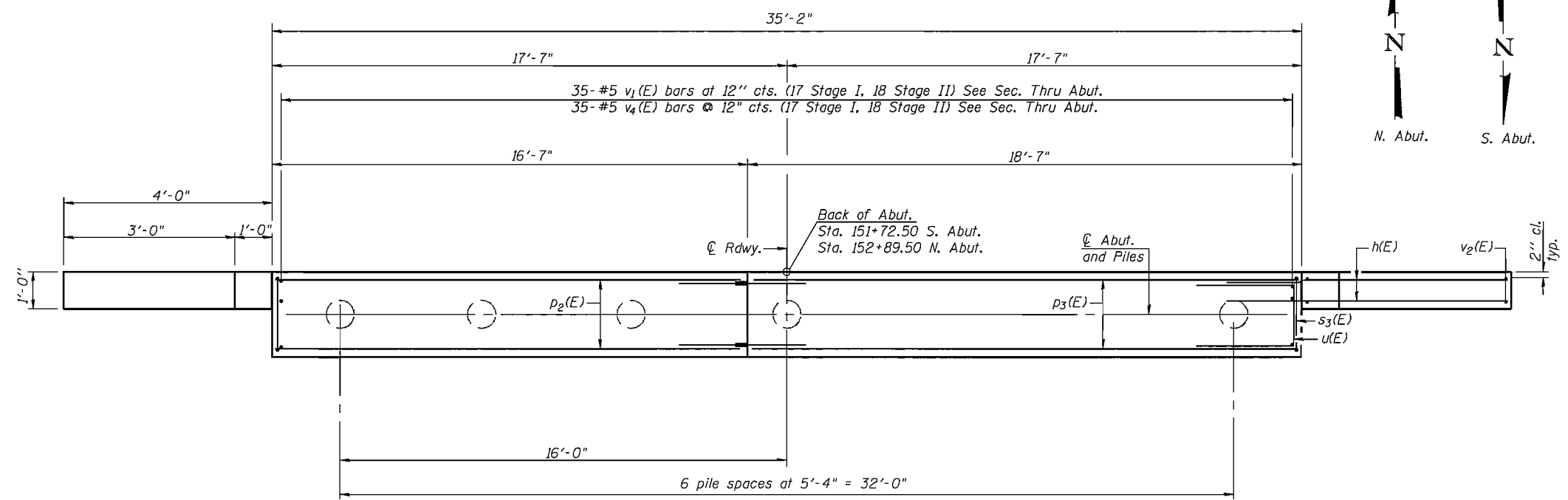
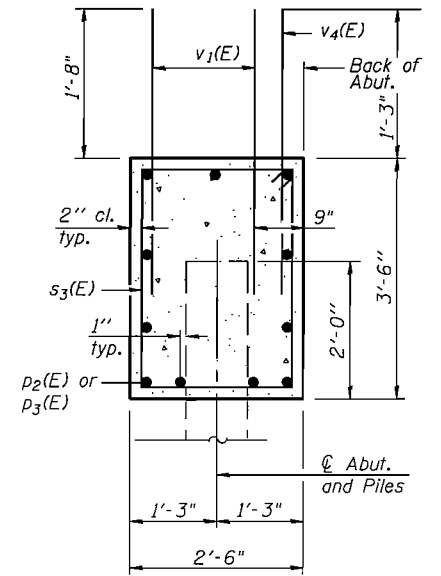
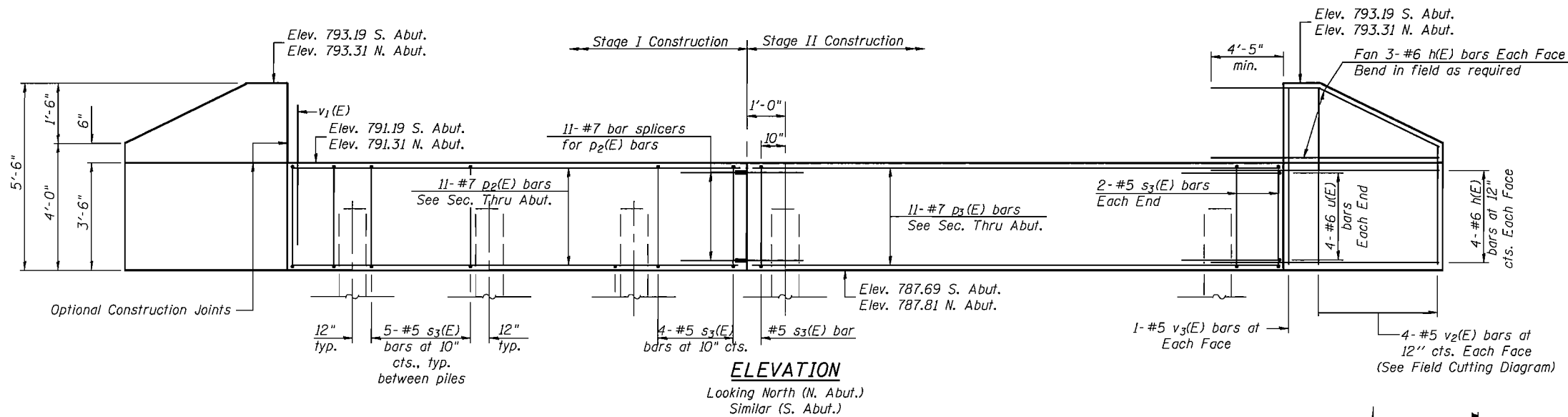


STATE OF ILLINOIS
DEPARTMENT OF TRANSPORTATION



BILL OF MATERIAL
(Two Abutments)

Bar	No.	Size	Length	Shape
h(E)	56	#6	8'-5"	—
p ₂ (E)	22	#7	16'-3"	—
p ₃ (E)	22	#7	18'-3"	—
s ₃ (E)	68	#5	11'-7"	□
u(E)	16	#6	10'-11"	—
v ₁ (E)	140	#5	3'-4"	—
v ₂ (E)	16	#5	8'-10"	—
v ₃ (E)	8	#5	5'-2"	—
v ₄ (E)	70	#5	3'-1"	┌
Structure Excavation			Cu. Yd.	164
Concrete Structures			Cu. Yd.	26
Reinforcement Bars, Epoxy Coated			Pound	4250
Furnishing Metal Shell Piles 14"x0.250"			Foot	754
Driving Piles			Foot	754
Test Pile Metal Shells			Each	1
Bar Splicers			Each	22

For details of Bar Splicers, see sheet 11 of 17.
For details of Metal Shell Piles, see sheet 10 of 17.

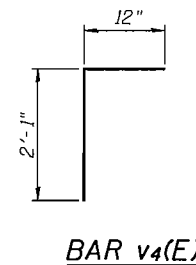
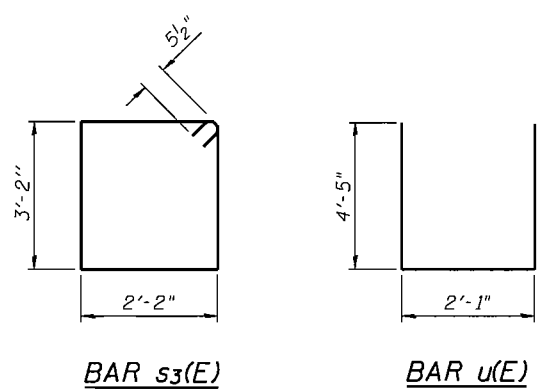
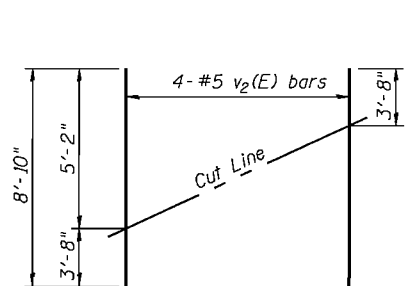
PILE DATA

Type: Metal Shell 14"φ w/ 0.25" walls
Nominal Required Bearing: 416k
Factored Resistance Available: 208k S. Abut., 189k N. Abut.
Est. Length: 58'
No. Production Piles: 13
No. Test Piles: 1 (N. Abut.)

DESIGNED	PBB/SAL
CHECKED	-
DRAWN	MLO
CHECKED	-

EXAMINED	200
PASSED	ENGINEER OF BRIDGE DESIGN
	ENGINEER OF BRIDGES AND STRUCTURES

FIELD CUTTING DIAGRAM



ABUTMENTS
STRUCTURE NO. 057-0248

SHEET NO. 8 17 SHEETS	F.A.S. RTE.	SECTION	COUNTY	TOTAL SHEETS	SHEET NO.
	2484	124BR-1	MCLEAN	55	32
CONTRACT NO. 70612					
FED. ROAD DIST. NO. ILLINOIS FED. AID PROJECT					