

CODE NO.	ITEM	UNIT	TOTAL QUANTITY	CONSTRUCTION CODE		
				90% FED 10% STATE		
				ROADWAY	BRIDGE	BRIDGE
				0005	0059	0059
				URBAN	SN 016-0048	SN 016-0049
* 78000200	THERMOPLASTIC PAVEMENT MARKING - LINE 4"	FOOT	2926	2926		
* 78000500	THERMOPLASTIC PAVEMENT MARKING - LINE 8"	FOOT	950	950		
* 78004210	PREFORMED PLASTIC PAVEMENT MARKING, TYPE B - INLAID - LINE 4"	FOOT	242	242		1
* 78004220	PREFORMED PLASTIC PAVEMENT MARKING, TYPE B - INLAID - LINE 5"	FOOT	2440	2440		
* 78004240	PREFORMED PLASTIC PAVEMENT MARKING, TYPE B - INLAID - LINE 8"	FOOT	242	242		1
* 78009004	MODIFIED URETHANE PAVEMENT MARKING - LINE 4"	FOOT	1646	1646		
* 78100100	RAISED REFLECTIVE PAVEMENT MARKER	EACH	36	36		
* 78100300	REPLACEMENT REFLECTOR	EACH	172	172		
* 78200011	BARRIER WALL REFLECTORS, TYPE C	EACH	400	400		
78300202	PAVEMENT MARKING REMOVAL - WATER BLASTING	SQ FT	2833	2833		
X0325201	SHOULDER RUMBLE STRIP REMOVAL	SQ YD	904	904		
X1700085	CLASS D PATCHES, TYPE IV, 14 INCH (SPECIAL)	SQ YD	300	300		
X2700001	TEMPORARY RUMBLE STRIPS (SPECIAL)	EACH	32	32		
* X2700003	GROOVING FOR RECESSED PAVEMENT MARKING 8"	FOOT	200	200		
X4400501	COMBINATION CURB AND GUTTER REMOVAL AND REPLACEMENT LESS THAN OR EQUAL TO 10 FEET	FOOT	32	32		1

* SPECIALTY ITEM

CODE NO.	ITEM	UNIT	TOTAL QUANTITY	CONSTRUCTION CODE		
				90% FED 10% STATE		
				ROADWAY	BRIDGE	BRIDGE
				0005	0059	0059
				URBAN	SN 016-0048	SN 016-0049
X7011015	TRAFFIC CONTROL AND PROTECTION (EXPRESSWAYS)	L SUM	1	1		
X7013820	TRAFFIC CONTROL SURVEILLANCE, EXPRESSWAYS	CAL DA	180	180		
X7030005	TEMPORARY PAVEMENT MARKING REMOVAL	SQ FT	9079	9079		
* X7800956	PREFORMED PLASTIC PAVEMENT MARKING, TYPE B - INLAID - CONTRAST - LINE 7"	FOOT	200	200		
* X7830070	GROOVING FOR RECESSED PAVEMENT MARKING 5"	FOOT	242	242		1
* X7830072	GROOVING FOR RECESSED PAVEMENT MARKING 6"	FOOT	2440	2440		
* X7830076	GROOVING FOR RECESSED PAVEMENT MARKING 9"	FOOT	242	242		1
* X8570000	SMART TRAFFIC MONITORING SYSTEM	L SUM	1	1		
Z0001800	APPROACH SLAB REPAIR (PARTIAL DEPTH)	SQ YD	0.1			0.1
Z0001903	STRUCTURAL STEEL REMOVAL	POUND	5390		2900	2490
Z0001905	STRUCTURAL STEEL REPAIR	POUND	1640		820	820
Z0006016	BRIDGE DECK LATEX CONCRETE OVERLAY, 2 3/4 INCHES	SQ YD	3590		1795	1795
Z0012130	BRIDGE DECK SCARIFICATION 3/4"	SQ YD	3590		1795	1795
Z0012754	STRUCTURAL REPAIR OF CONCRETE (DEPTH EQUAL TO OR LESS THAN 5 INCHES)	SQ FT	509		294	215
Z0012755	STRUCTURAL REPAIR OF CONCRETE (DEPTH GREATER THAN 5 INCHES)	SQ FT	338		190	148

MODEL: Default
FILE NAME: P12004-825 P1B195-014 HBRMWD #1.157 over WCL RRSsheet Files62M30-SHT-5002.dgn



USER NAME = all.issa	DESIGNED - AMI	REVISED -
PLOT SCALE = 100.0000' / in.	DRAWN - AMI	REVISED -
PLOT DATE = 8/12/2021	CHECKED - RTB	REVISED -
	DATE - 8/12/2021	REVISED -

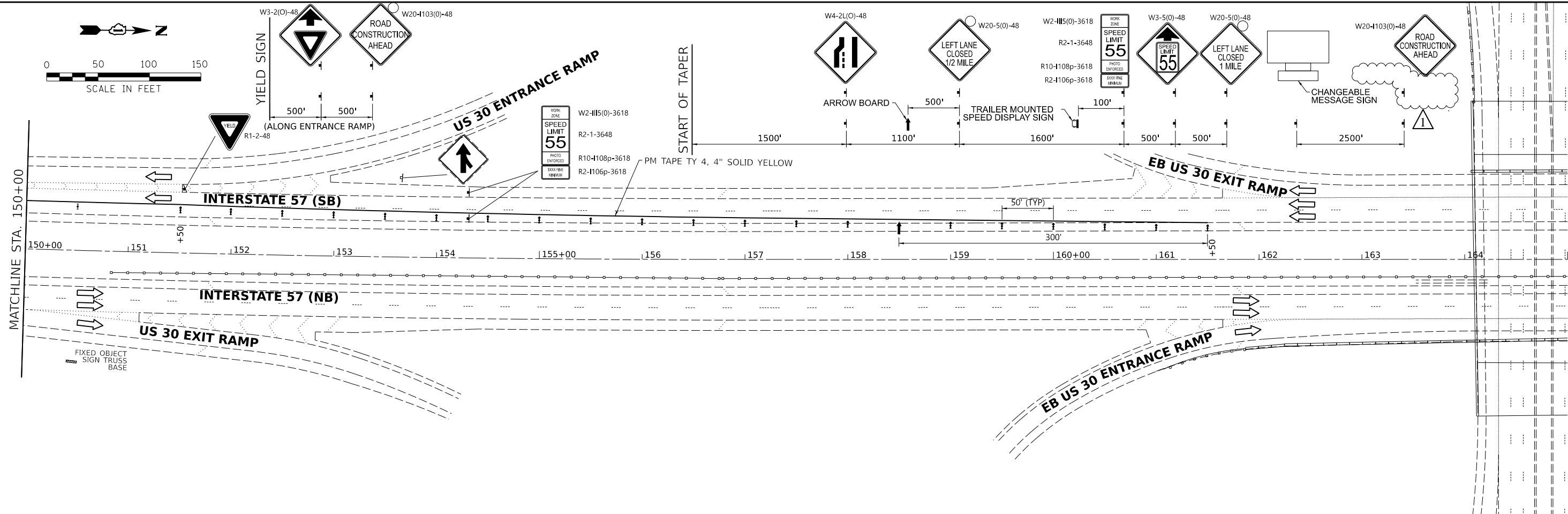
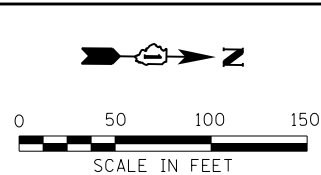
STATE OF ILLINOIS
DEPARTMENT OF TRANSPORTATION

SUMMARY OF QUANTITIES
I-57 OVER WCL RR

SCALE: 100.0000' / 1 SHEET 2 OF 3 SHEETS STA. TO STA.

F.A.I. RTE.	SECTION	COUNTY	TOTAL SHEETS	SHEET NO.
57	2020-170-BR	COOK	89	4
CONTRACT NO. 62M30				
(ILLINOIS FED. AID PROJECT)				

1 REVISED SHEET 10/20/2021



DESIGNED	CDM	06/11/21
DRAWN	CDM	10/13/21
REVIEWED	KMA	10/13/21

FILE NAME = I:\2020\2020\2020\57A\CAD\CAD_Sheets\062821\30-ht-57stageSI-4.dgn



USER NAME = Ander00833	DESIGNED - CDM	REVISED - ADDENDUM 1
PLOT SCALE = 99.9998' / in.	DRAWN - CDM	REVISED -
PLOT DATE = 10/13/2021	CHECKED - KMA	REVISED -
	DATE - 06/28/21	REVISED -

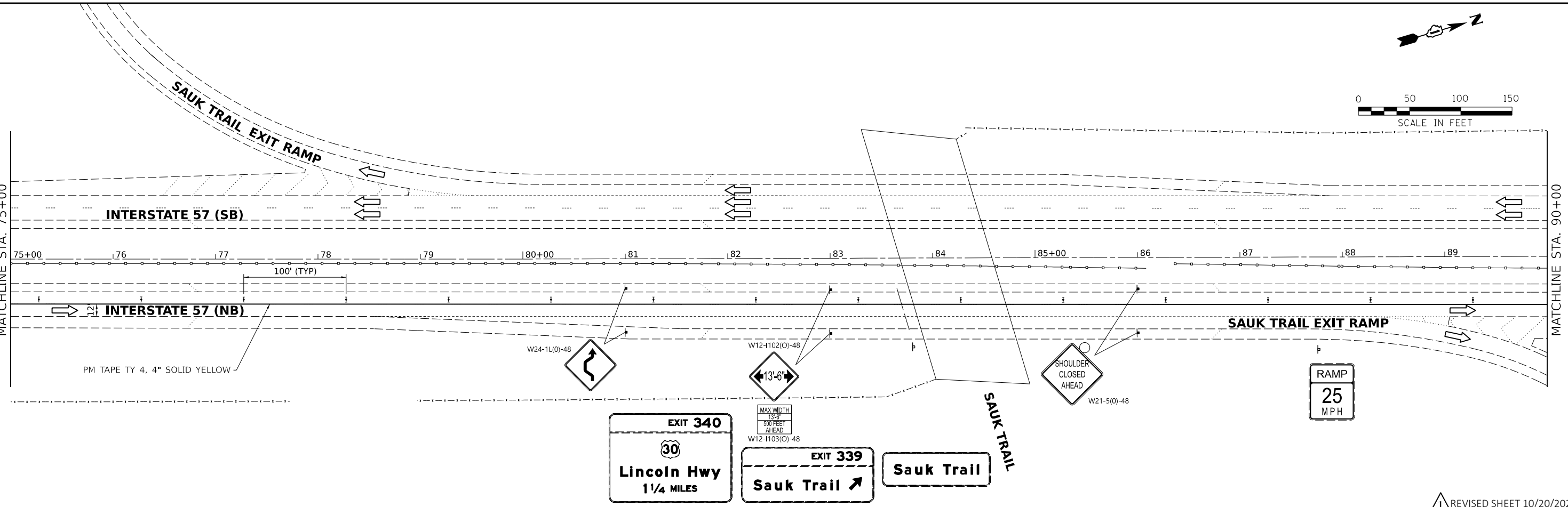
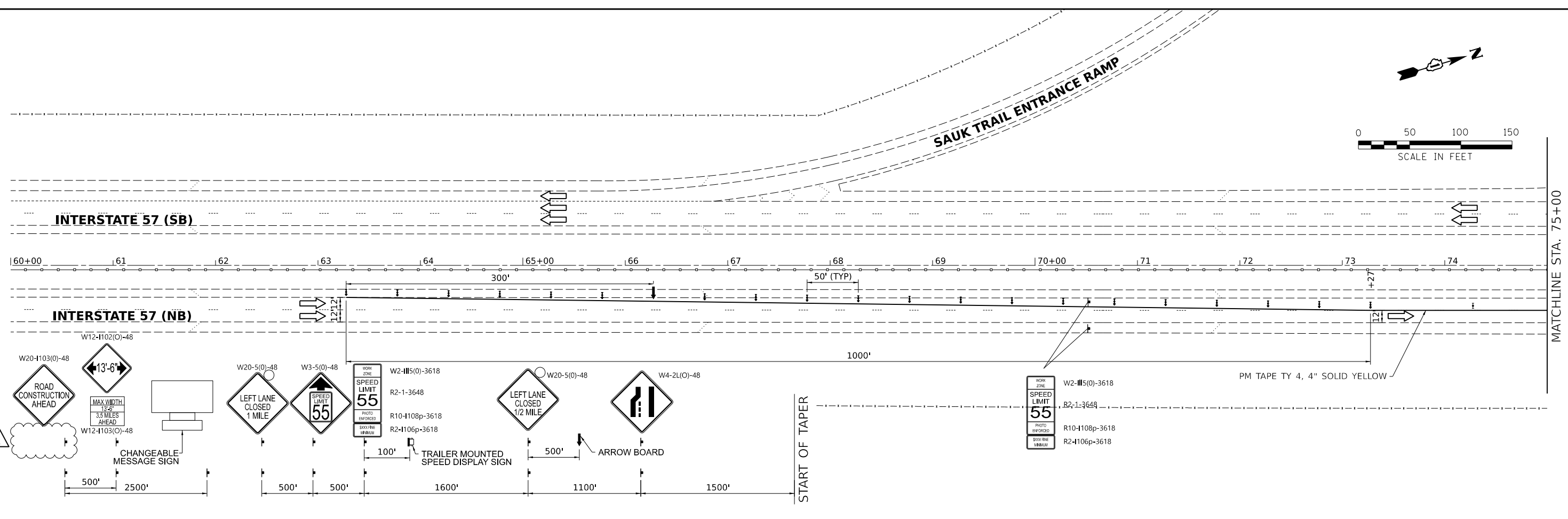
**STATE OF ILLINOIS
DEPARTMENT OF TRANSPORTATION**

**MAINTENANCE OF TRAFFIC- NORTHBOUND & SOUTHBOUND STAGE 1
INTERSTATE 57**

SCALE: 1" = 50' SHEET 4 OF 4 SHEETS STA. 150+00 TO STA. 165+00

F.A.I. RTE.	SECTION	COUNTY	TOTAL SHEETS	SHEET NO.
57	2020-170-BR	COOK	89	14
ILLINOIS FED. AID PROJECT			CONTRACT NO. 62M30	

REVISED SHEET 10/20/2021



DESIGNED	CDM	06/11/21
DRAWN	CDM	10/13/21
REVIEWED	KMA	10/13/21

FILE NAME = I:\2020\2020\2020\55A\CAD\CAD_Sheets\0162M30-ht-Stage2-1.dgn



USER NAME = Ander00833
 PLOT SCALE = 99.9998 ' / in.
 PLOT DATE = 10/13/2021

DESIGNED - CDM
 DRAWN - CDM
 CHECKED - KMA
 DATE - 06/28/21

REVISED - ADDENDUM 1
 REVISED -
 REVISED -
 REVISED -

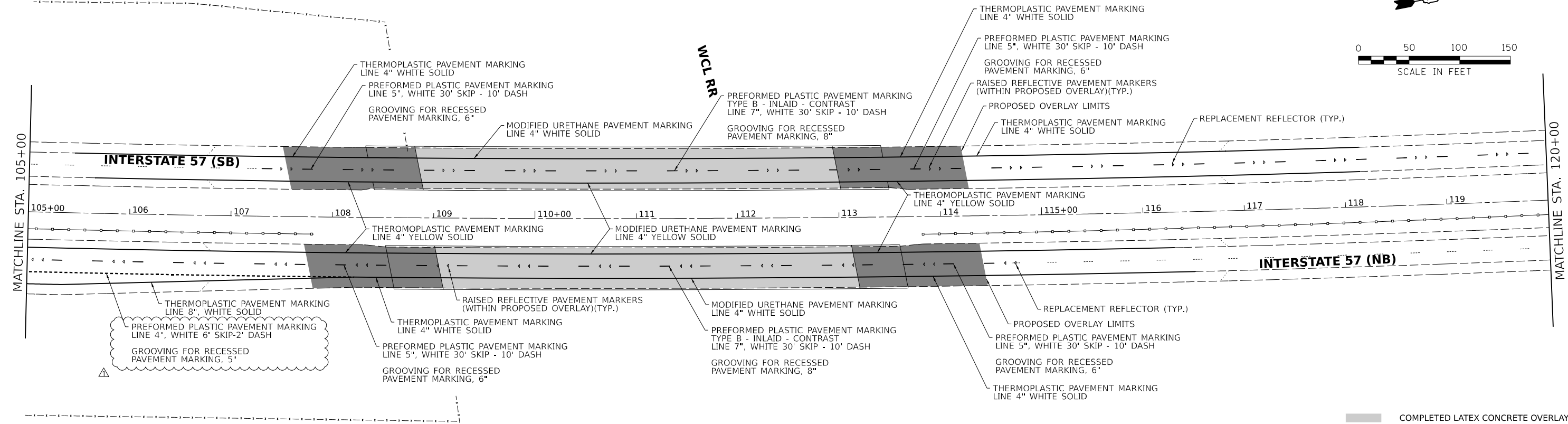
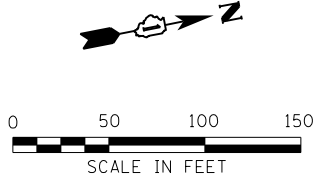
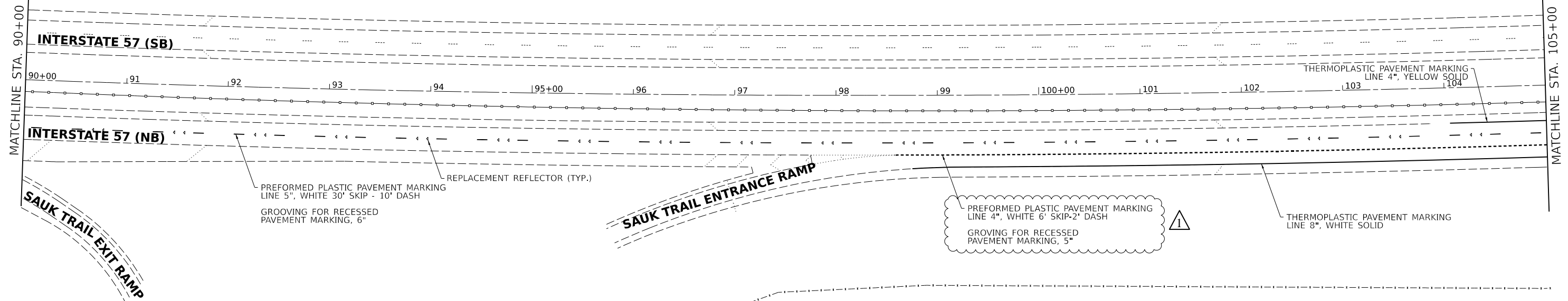
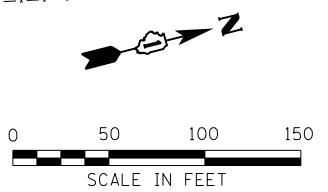
STATE OF ILLINOIS
 DEPARTMENT OF TRANSPORTATION

MAINTENANCE OF TRAFFIC- NORTHBOUND & SOUTHBOUND STAGE 2
 INTERSTATE 57

SCALE: 1" = 50' SHEET 1 OF 4 SHEETS STA. 60+00 TO STA. 90+00

F.A.I. RTE.	SECTION	COUNTY	TOTAL SHEETS	SHEET NO.
57	2020-170-BR	COOK	89	15
CONTRACT NO. 62M30			ILLINOIS FED. AID PROJECT	

REVISION 1 REVISED SHEET 10/20/2021



COMPLETED LATEX CONCRETE OVERLAY
 COMPLETED HMA OVERLAY
 REVISED SHEET 10/20/2021

DESIGNED	CDM	06/11/21
DRAWN	CDM	10/13/21
REVIEWED	KMA	10/13/21



USER NAME = Ander00833	DESIGNED - CDM	REVISED - ADDENDUM 1
PLOT SCALE = 99.9998' / in.	DRAWN - CDM	REVISED -
PLOT DATE = 10/13/2021	CHECKED - KMA	REVISED -
	DATE - 06/28/21	REVISED -

STATE OF ILLINOIS
DEPARTMENT OF TRANSPORTATION

PROPOSED PAVEMENT MARKINGS			
INTERSTATE 57			
SCALE: 1" = 50'	SHEET 2 OF 4 SHEETS	STA. 90+00	TO STA. 120+00

F.A.I. RTE.	SECTION	COUNTY	TOTAL SHEETS	SHEET NO.
57	2020-170-BR	COOK	89	20
CONTRACT NO. 62M30			ILLINOIS FED. AID PROJECT	