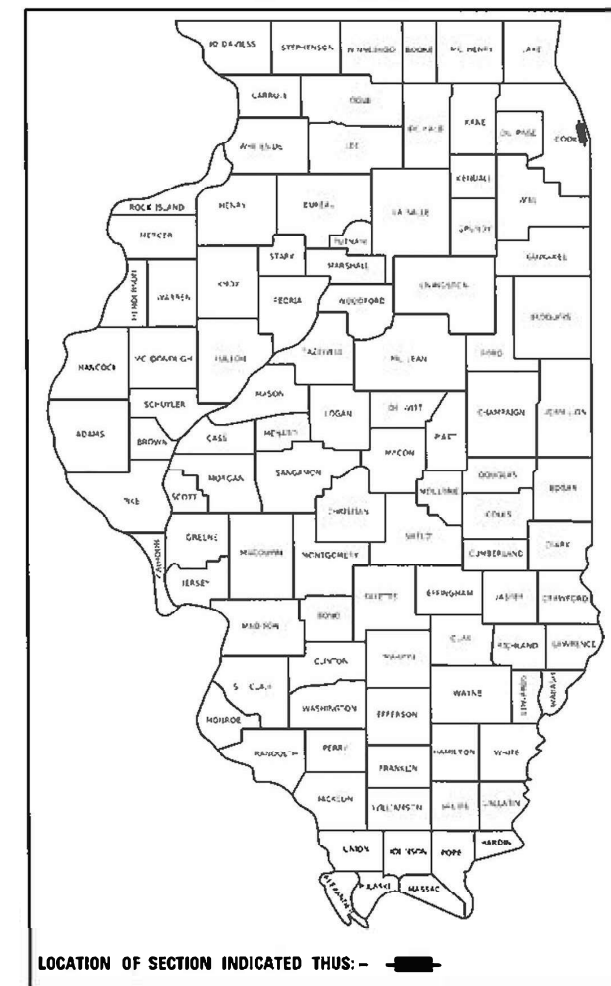


STATE OF ILLINOIS
DEPARTMENT OF TRANSPORTATION

| F.A. RTE. | SECTION | COUNTY | TOTAL SHEETS | SHEET NO. |
|-----------|------------|--------|--------------------|-----------|
| 341 | 2020-063-1 | COOK | 28 | 1 |
| ILLINOIS | | | CONTRACT NO. 62L41 | |

* 28 + 1 = 29 TOTAL SHEETS

D-91-462-20



FOR INDEX OF SHEETS, SEE SHEET NO. 2

TRAFFIC DATA

ADT (2019) = 108,200
POSTED SPEED LIMIT = 45 MPH

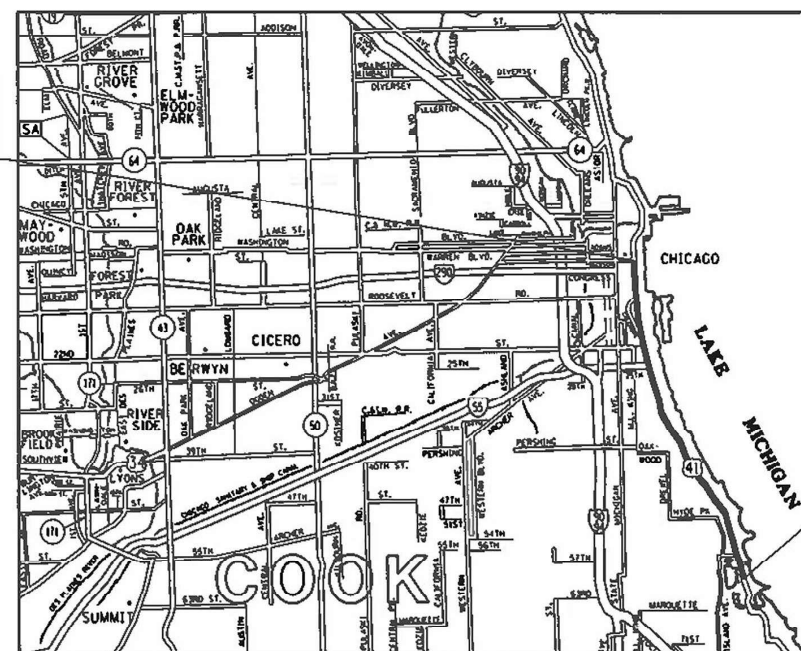
IMPROVEMENTS ARE LOCATED
IN THE CITY OF CHICAGO

**PROPOSED
HIGHWAY PLANS**

FAP ROUTE 341: US 41 (LAKESHORE DRIVE)
FROM BALBO DRIVE TO 57TH DRIVE
SECTION: 2020-063-1
CRACK AND JOINT SEALING
COOK COUNTY

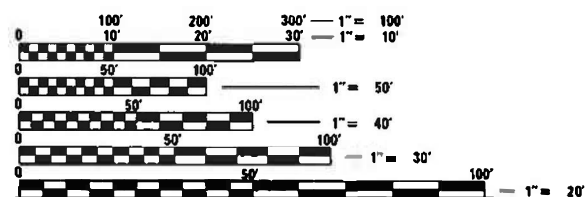
C-91-260-20

PROJECT ENDS:
STATION 344 + 44.06



PROJECT BEGINS:
STATION 10 + 00

CHICAGO TOWNSHIP



FULL SIZE PLANS HAVE BEEN PREPARED USING STANDARD ENGINEERING SCALES. REDUCED SIZED PLANS WILL NOT CONFORM TO STANDARD SCALES. IN MAKING MEASUREMENTS ON REDUCED PLANS, THE ABOVE SCALES MAY BE USED.

C.U.A.N
CHICAGO UTILITY ALERT NETWORK
1-312-744-7000

PROJECT MANAGER: ALAIN MIDY (847) 221-3056

GROSS LENGTH = 32,736 FT. = 6.2 MILES
NET LENGTH = 32,736 FT. = 6.2 MILES

CONTRACT NO. 62L41

STATE OF ILLINOIS
DEPARTMENT OF TRANSPORTATION

SUBMITTED JUNE 23, 2020

Anthony J. Quigley REGIONAL ENGINEER

October 2, 2020

Scott A. Elk
ENGINEER OF DESIGN AND ENVIRONMENT

October 2, 2020

James J. Quinn
DIRECTOR OF HIGHWAYS PROJECT IMPLEMENTATION

PRINTED BY THE AUTHORITY
OF THE STATE OF ILLINOIS

INDEX OF SHEETS

| SHEET NO. | DESCRIPTION |
|-----------|---|
| 1 | TITLE SHEET |
| 2 | INDEX OF SHEETS, HIGHWAY STANDARDS, AND GENERAL NOTES |
| 3 | SUMMARY OF QUANTITIES |
| 4-8 | TYPICAL SECTIONS |
| 9-20 | PROPOSED PLANS AND PAVEMENT MARKING PLANS |
| 21 | ENTRANCE AND EXIT RAMP CLOSURE DETAILS (TC-08) |
| 21A | SINGLE LANE WEAVE AND MULTI-LANE WEAVE (TC-09) |
| 22 | TRAFFIC CONTROL AND PROTECTION FOR SIDE ROADS, INTERSECTIONS, AND DRIVEWAYS (TC-10) |
| 23 | TRAFFIC CONTROL AND PROTECTION AT TURN BAYS (TC-14) |
| 24 | TRAFFIC CONTROL DETAILS FOR FREEWAY SHOULDER CLOSURES AND PARTIAL RAMP CLOSURES (TC-17) |
| 25 | ARTERIAL ROAD INFORMATION SIGN (TC-22) |
| 26-28 | CITY OF CHICAGO TYPICAL PAVEMENT MARKINGS (TC-24) |

STATE HIGHWAY STANDARDS

| STANDARD NO. | DESCRIPTION |
|--------------|--|
| 442101-09 | CLASS B PATCHES |
| 701101-05 | OFF-ROAD OPERATIONS, MULTILANE, 15' TO 24" FROM PAVEMENT EDGE |
| 701106-02 | OFF-ROAD OPERATIONS, >15' AWAY |
| 701400-09 | APPROACH TO LANE CLOSURE, FREEWAY/EXPRESSWAY |
| 701401-12 | LANE CLOSURE, FREEWAY/EXPRESSWAY |
| 701411-09 | LANE CLOSURE, MULTILANE, AT ENTRANCE OR EXIT RAMP, FOR SPEED > 45MPH |
| 701428-01 | TRAFFIC CONTROL SETUP & REMOVAL FREEWAY/EXPRESSWAY |
| 701446-10 | TWO LANE CLOSURE FREEWAY/EXPRESSWAY |
| 701601-09 | URBAN LANE CLOSURE, MULTILANE, 1W OR 2W WITH NON TRAVERSABLE MEDIAN |
| 701701-10 | URBAN SINGLE LANE CLOSURE, MULTILANE INTERSECTION |
| 701801-06 | SIDEWALK, CORNER OR CROSSWALK CLOSURE |
| 701901-08 | TRAFFIC CONTROL DEVICES |

GENERAL NOTES

- BEFORE STARTING ANY EXCAVATION, THE CONTRACTOR SHALL CALL "C.U.A.N." AT (312) 744-7000 OR 811 FOR FIELD LOCATIONS OF BURIED ELECTRIC, TELEPHONE AND GAS UTILITIES. 48 HOUR NOTIFICATION IS REQUIRED.
- THE CONTRACTOR SHALL COORDINATE CONSTRUCTION ACTIVITIES WITH UTILITY COMPANIES, AND THE CITY OF CHICAGO.
- THE CONTRACTOR WILL NOT BE ALLOWED TO SET UP A YARD OR FIELD OFFICE ON STATE PROPERTY WITHOUT WRITTEN PERMISSION FROM THE DEPARTMENT.
- ALL DAMAGE TO EXISTING PAVEMENT MARKINGS OR RAISED REFLECTIVE PAVEMENT MARKERS OUTSIDE THE REMOVAL LINE SHOWN ON THE PLANS SHALL BE REPLACED AT NO ADDITIONAL COST TO THE DEPARTMENT.
- IT SHALL BE THE CONTRACTOR'S RESPONSIBILITY TO VERIFY ALL DIMENSIONS AND CONDITIONS EXISTING IN THE FIELD PRIOR TO CONSTRUCTION AND ORDERING OF MATERIALS.
- BEFORE BEGINNING ANY WORK, THE CONTRACTOR SHALL RETAIN AND RECORD FOR FUTURE REFERENCE, ALL EXISTING PAVEMENT MARKING LINES (AND RAISED REFLECTIVE PAVEMENT MARKERS) IN ORDER THAT THESE LOCATIONS CAN BE RE-ESTABLISHED FOR STRIPING. EXACT LOCATIONS OF ALL PAVEMENT MARKINGS SHALL BE AS DIRECTED BY THE ENGINEER.
- THE CONTRACTOR SHALL CONTACT THE DISTRICT ONE TRAFFIC CONTROL SUPERVISOR AT KALPANA.KANNAN-HOSADURGA@ILLINOIS.GOV A MINIMUM OF 72 HOURS IN ADVANCE OF BEGINNING WORK.
- THE CONTRACTOR SHALL BE REQUIRED TO PROVIDE ACCESS TO ABUTTING PROPERTY AT ALL TIMES DURING THE CONSTRUCTION OF THIS PROJECT.

MODEL: Default
 FILE NAME: P:\uplanroom.dat\illinois.gov\PWIDOT\Documents\DOT_Offices\District_1\Project\ID146270\CADD\data\Design\ID146270-sht-cover.dgn

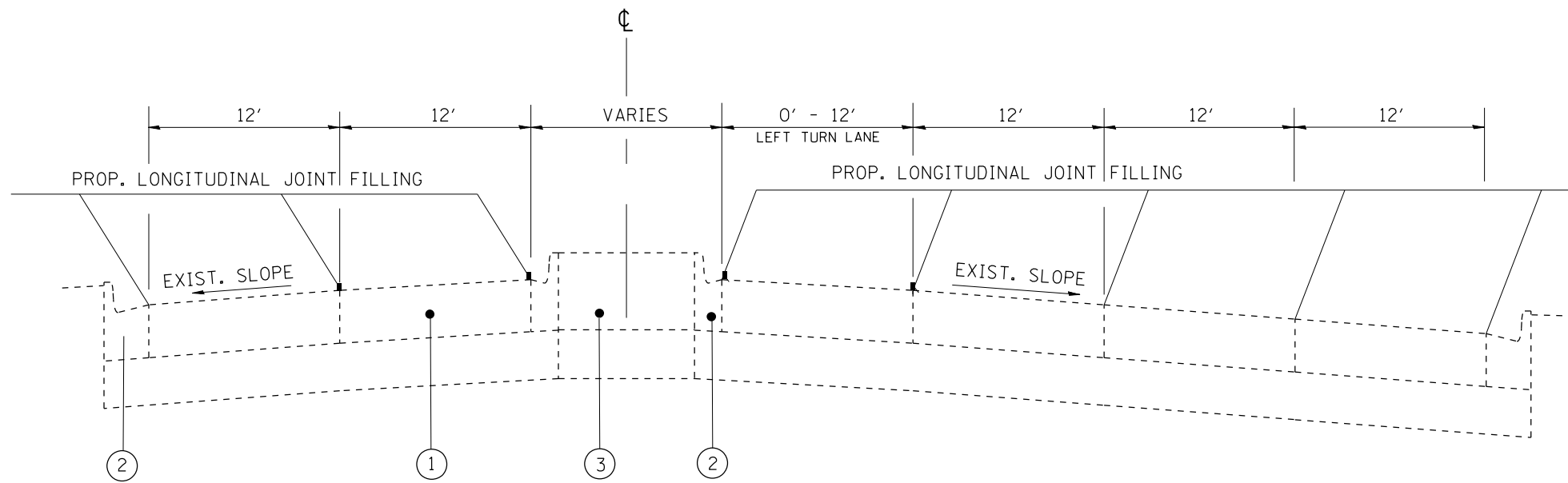
REV-SEP

| | | | | | | | | | |
|------------------------------|------------|-----------|---|---|---------------------------|---------|--------|--------------|-----------|
| USER NAME = somooi | DESIGNED - | REVISED - | STATE OF ILLINOIS DEPARTMENT OF TRANSPORTATION | INDEX OF SHEETS, HIGHWAY STANDARDS, AND GENERAL NOTES U.S. ROUTE 41 (LAKE SHORE DRIVE) (BALBO DRIVE TO 57TH DRIVE) | F.A. RTE. | SECTION | COUNTY | TOTAL SHEETS | SHEET NO. |
| DRAWN - | REVISED - | 341 | | | 2020-063-I | COOK | 28 | 2 | |
| PLOT SCALE = 100.0000' / in. | CHECKED - | REVISED - | | | CONTRACT NO. 62L41 | | | | |
| PLOT DATE = 9/21/2020 | DATE - | REVISED - | | | ILLINOIS FED. AID PROJECT | | | | |
| | | | | SCALE: | SHEET | OF | SHEETS | STA. | TO STA. |

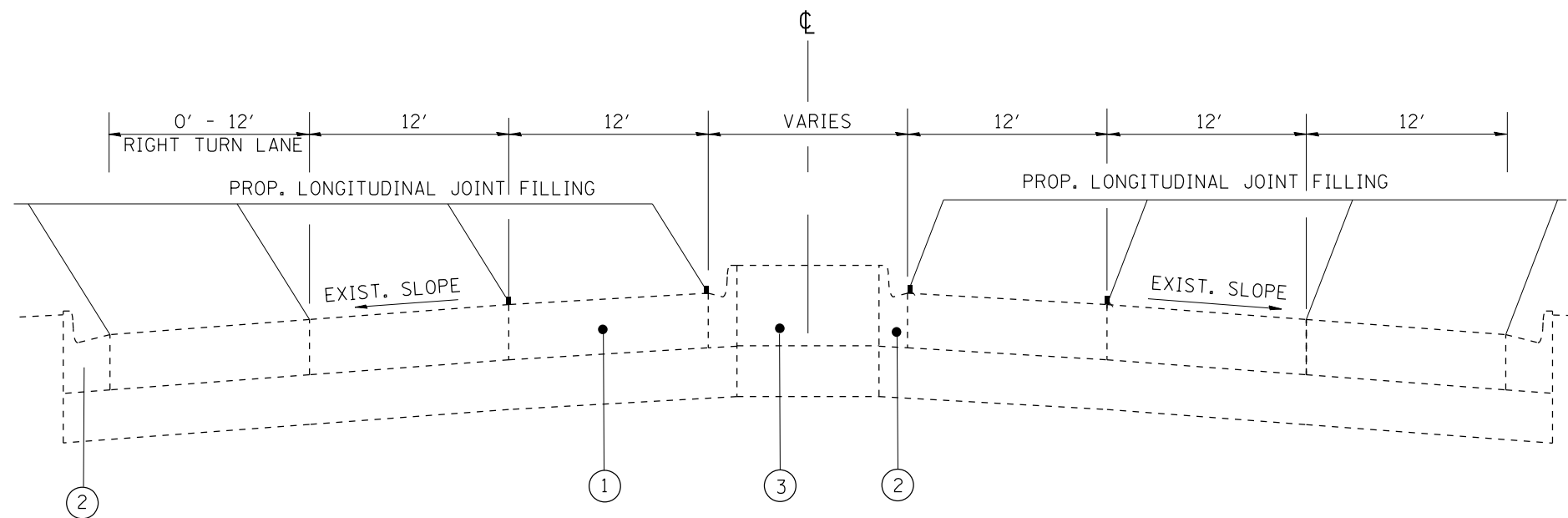
| SUMMARY OF QUANTITIES | | | URBAN TOTAL QUANTITIES | CONSTRUCTION TYPE CODE | | | | | SUMMARY OF QUANTITIES | | | URBAN TOTAL QUANTITIES | CONSTRUCTION TYPE CODE | | | | | |
|-----------------------|---|--------|------------------------------|------------------------|--|--|--|--|-----------------------|------------|---|------------------------------|------------------------|-----------------------|--|--|--|------------------|
| CODE NO | ITEM | UNIT | | 100% STATE 0005 | | | | | | CODE NO | ITEM | | UNIT | 100% STATE 0005 | | | | |
| 44200050 | WELDED WIRE REINFORCEMENT | SO YD | 1480 | 1480 | | | | | | 70102640 | TRAFFIC CONTROL AND PROTECTION, STANDARD 701801 | L SUM | 1 | 1 | | | | |
| 44200144 | CLASS B PATCHES, TYPE II, 12 INCH | SO YD | 1481 | 1481 | | | | | | * 78009000 | MODIFIED URETHANE PAVEMENT MARKING - LETTERS AND SYMBOLS | SO FT | 574 | 574 | | | | |
| 44200148 | CLASS B PATCHES, TYPE III, 12 INCH | SO YD | 888 | 888 | | | | | | * 78009004 | MODIFIED URETHANE PAVEMENT MARKING - LINE 4" | FOOT | 85372 | 85372 | | | | |
| 44200150 | CLASS B PATCHES, TYPE IV, 12 INCH | SO YD | 592 | 592 | | | | | | * 78009006 | MODIFIED URETHANE PAVEMENT MARKING - LINE 6" | FOOT | 7609 | 7609 | | | | |
| 44201299 | DOWEL BARS 1 1/2" | EACH | 3140 | 3140 | | | | | | * 78009008 | MODIFIED URETHANE PAVEMENT MARKING - LINE 8" | FOOT | 18600 | 18600 | | | | |
| 44213200 | SAW CUTS | FOOT | 12294 | 12294 | | | | | | * 78009012 | MODIFIED URETHANE PAVEMENT MARKING - LINE 12" | FOOT | 2210 | 2210 | | | | |
| 44213202 | TIE BARS 1" | EACH | 434 | 434 | | | | | | * 78009024 | MODIFIED URETHANE PAVEMENT MARKING - LINE 24" | FOOT | 2029 | 2029 | | | | |
| 45200100 | JOINT OR CRACK ROUTING (PC CONCRETE PAVEMENT AND SHOULDER) | FOOT | 38062 | 38062 | | | | | | Z0030850 | TEMPORARY INFORMATION SIGNING | SO FT | 308 | 308 | | | | |
| 45200300 | JOINT OR CRACK FILLING | POUND | 119617 | 119617 | | | | | | Ø Z0076604 | TRAINEES - TRAINING PROGRAM GRADUATE | HOURS | 500 | 500 | | | | |
| 67000400 | ENGINEER'S FIELD OFFICE, TYPE A | CAL MO | 6 | 6 | | | | | | | | | | | | | | |
| 67100100 | MOBILIZATION | L SUM | 1 | 1 | | | | | | | | | | | | | | |
| 70102630 | TRAFFIC CONTROL AND PROTECTION, STANDARD 701601 | L SUM | 1 | 1 | | | | | | | | | | | | | | |
| 70102635 | TRAFFIC CONTROL AND PROTECTION, STANDARD 701701 | L SUM | 1 | 1 | | | | | | | | | | | | | | * SPECIALTY ITEM |

Ø 0042

REV-SEP



TYPICAL SECTION WITH CONCRETE MEDIAN AND TURNING LANE
 STA. 10+00 TO 16+00 & STA. 80+00 TO 97+00



TYPICAL SECTION WITH CONCRETE MEDIAN AND TURNING LANE
 STA. 16+00 TO 42+00

LEGEND

- ① EXISTING PORTLAND CEMENT CONCRETE PAVEMENT
- ② EXISTING CURB AND GUTTER
- ③ EXISTING CONCRETE MEDIAN
- ④ EXISTING VEGETATED MEDIAN

MODEL: Default
 FILE: Model: 2020-06-30 10:00:00 AM
 PROJECT: I:\Projects\146220\CADD\Drawings\146220-01-01-01.dwg
 PLOT DATE: 8/13/2020

| | | |
|------------------------------|------------|-----------|
| USER NAME = somool | DESIGNED - | REVISED - |
| | DRAWN - | REVISED - |
| PLOT SCALE = 100.0000' / in. | CHECKED - | REVISED - |
| PLOT DATE = 8/13/2020 | DATE - | REVISED - |

**STATE OF ILLINOIS
 DEPARTMENT OF TRANSPORTATION**

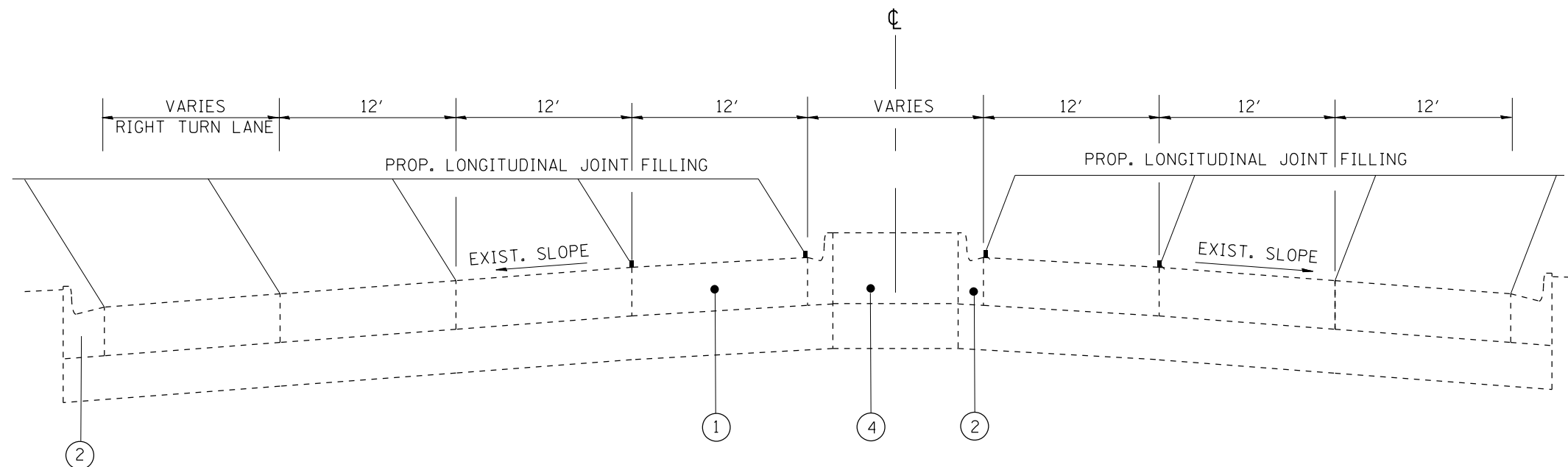
**TYPICAL SECTIONS
 U.S. ROUTE 41 (LAKE SHORE DRIVE) (BALBO DRIVE TO 57TH DRIVE)**

SCALE: SHEET OF SHEETS STA. TO STA.

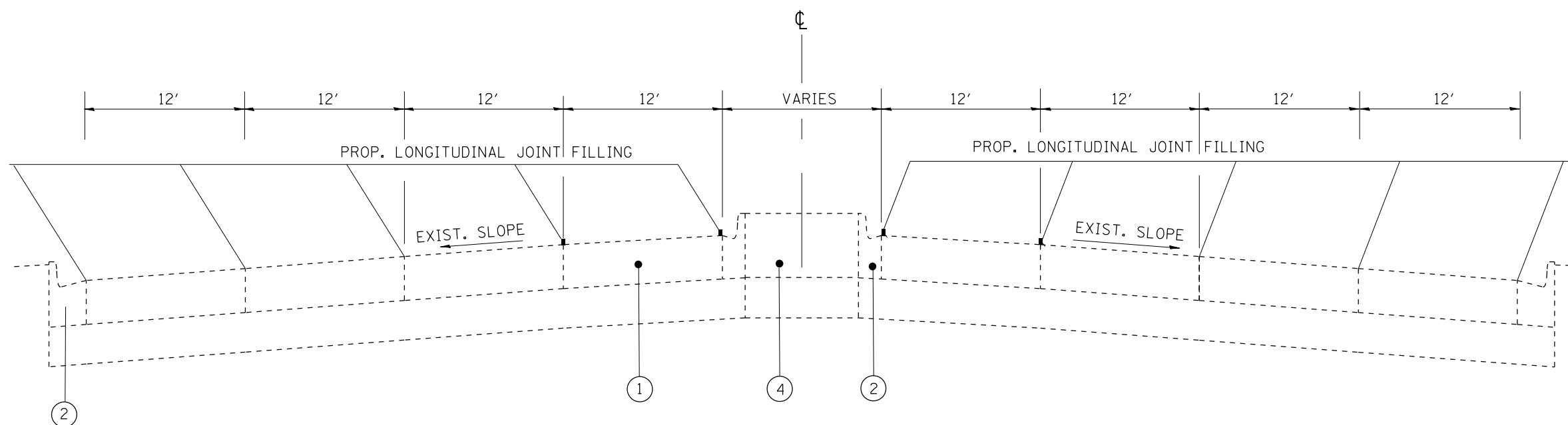
| | | | | |
|--------------------|------------|------------------|--------------|-----------|
| F.A.P. RTE. | SECTION | COUNTY | TOTAL SHEETS | SHEET NO. |
| 341 | 2020-063-I | COOK | 28 | 4 |
| CONTRACT NO. 62L41 | | | | |
| ILLINOIS | | FED. AID PROJECT | | |

LEGEND

- ① EXISTING PORTLAND CEMENT CONCRETE PAVEMENT
- ② EXISTING CURB AND GUTTER
- ③ EXISTING CONCRETE MEDIAN
- ④ EXISTING VEGETATED MEDIAN



TYPICAL SECTION WITH VEGETATED MEDIAN AND TURNING LANE
STA. 42+00 TO 103+00 & STA. 245+00 TO 258+00



TYPICAL SECTION WITH VEGETATED MEDIAN AND TURNING LANE
STA. 103+00 TO 192+00 & STA. 236+50 TO 245+35 & STA. 308+00 TO 314+00

MODEL: Default
 FILE: Model: Project\p10000000.dwg
 PROJECT: 10000000
 USER: somooi
 DATE: 8/13/2020
 PLOT SCALE: 100.0000' / in.
 PLOT DATE: 8/13/2020

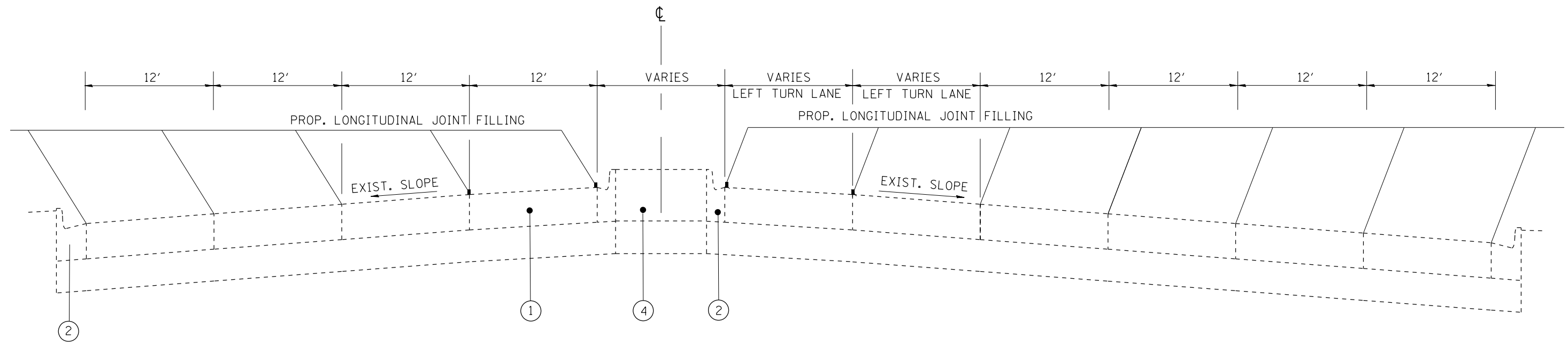
| | | |
|------------------------------|------------|-----------|
| USER NAME = somooi | DESIGNED - | REVISED - |
| | DRAWN - | REVISED - |
| PLOT SCALE = 100.0000' / in. | CHECKED - | REVISED - |
| PLOT DATE = 8/13/2020 | DATE - | REVISED - |

**STATE OF ILLINOIS
DEPARTMENT OF TRANSPORTATION**

**TYPICAL SECTIONS
U.S. ROUTE 41 (LAKE SHORE DRIVE) (BALBO DRIVE TO 57TH DRIVE)**

SCALE: SHEET OF SHEETS STA. TO STA.

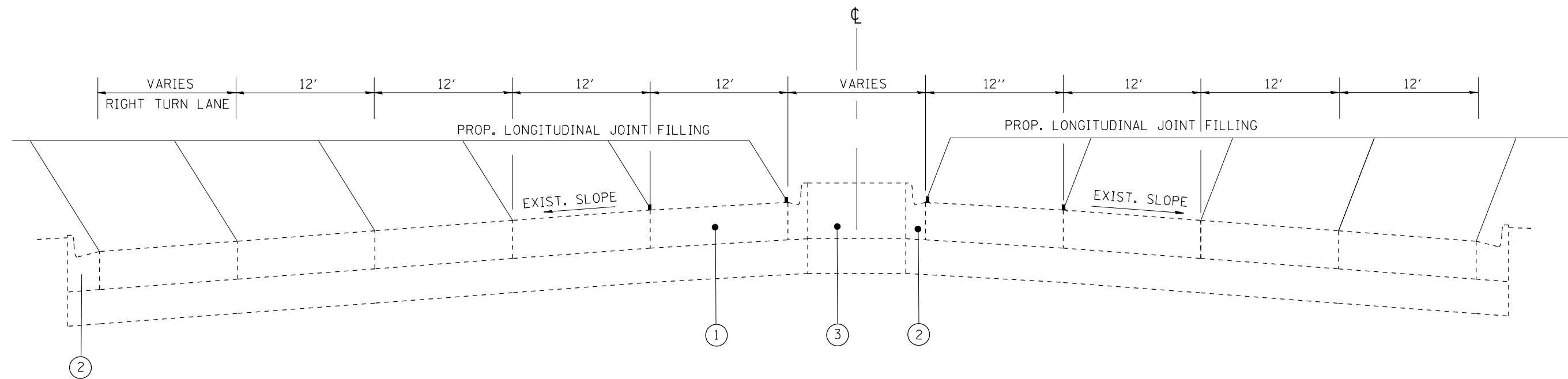
| F.A.P. RTE. | SECTION | COUNTY | TOTAL SHEETS | SHEET NO. |
|---------------------------|------------|--------|--------------|-----------|
| 341 | 2020-063-I | COOK | 28 | 5 |
| CONTRACT NO. 62L41 | | | | |
| ILLINOIS FED. AID PROJECT | | | | |



TYPICAL SECTION WITH VEGETATED MEDIAN AND TURNING LANE
STA. 303+00 TO 317+00

LEGEND

- ① EXISTING PORTLAND CEMENT CONCRETE PAVEMENT
- ② EXISTING CURB AND GUTTER
- ③ EXISTING CONCRETE MEDIAN
- ④ EXISTING VEGETATED MEDIAN



TYPICAL SECTION CONCRETE MEDIAN AND TURNING LANE
STA. 317+00 TO 335+00 & STA. 340+00 TO 344+44.06

MODEL: Default
 FILE: \\nrcs-pw\pub\baronm.dwg
 PROJECT: I:\Projects\146220\CADD\Drawings\146220-01-01-01.dwg
 DATE: 8/13/2020

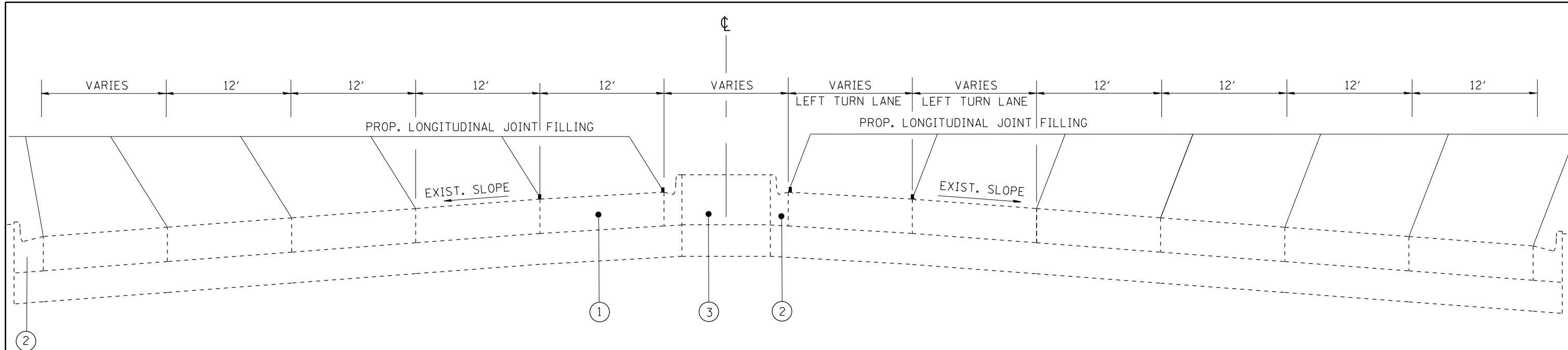
| | | |
|------------------------------|------------|-----------|
| USER NAME = somool | DESIGNED - | REVISED - |
| | DRAWN - | REVISED - |
| PLOT SCALE = 100.0000' / in. | CHECKED - | REVISED - |
| PLOT DATE = 8/13/2020 | DATE - | REVISED - |

**STATE OF ILLINOIS
DEPARTMENT OF TRANSPORTATION**

**TYPICAL SECTIONS
U.S. ROUTE 41 (LAKE SHORE DRIVE) (BALBO DRIVE TO 57TH DRIVE)**

SCALE: SHEET OF SHEETS STA. TO STA.

| | | | | |
|--------------------|--------------------|-------------|---------------------------|-------------|
| F.A.P. RTE. 341 | SECTION 2020-063-I | COUNTY COOK | TOTAL SHEETS 28 | SHEET NO. 7 |
| CONTRACT NO. 62L41 | | | ILLINOIS FED. AID PROJECT | |



TYPICAL SECTION CONCRETE MEDIAN AND TURNING LANE
STA. 335+00 TO 340+00

LEGEND

- ① EXISTING PORTLAND CEMENT CONCRETE PAVEMENT
- ② EXISTING CURB AND GUTTER
- ③ EXISTING CONCRETE MEDIAN
- ④ EXISTING VEGETATED MEDIAN

MODEL: Default
 FILE NAME: P:\p\planroom.dwg
 PROJECT: P:\DOT\Documents\DOT - Offices\District 1\Projects\146220\CADD\Design\146220-sh-covers.dgn

| | | |
|------------------------------|------------|-----------|
| USER NAME = somool | DESIGNED - | REVISED - |
| | DRAWN - | REVISED - |
| PLOT SCALE = 100.0000' / in. | CHECKED - | REVISED - |
| PLOT DATE = 8/13/2020 | DATE - | REVISED - |

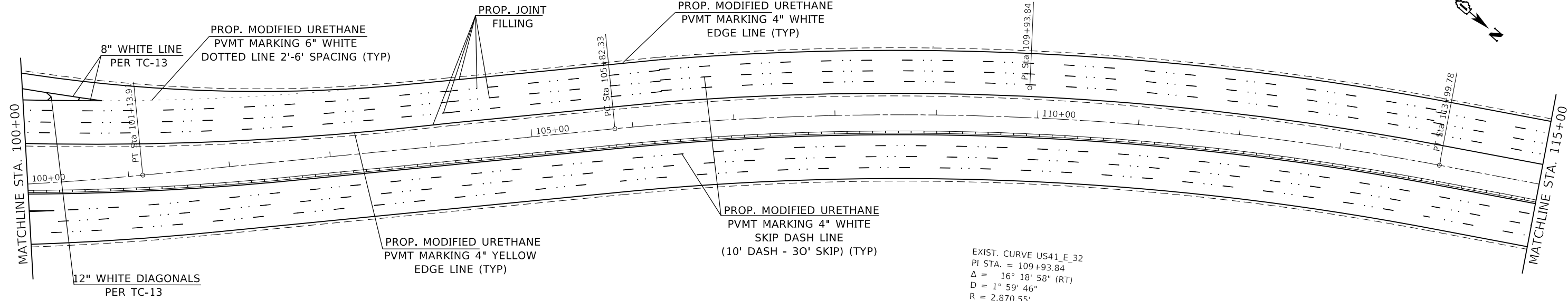
**STATE OF ILLINOIS
DEPARTMENT OF TRANSPORTATION**

**TYPICAL SECTIONS
U.S. ROUTE 41 (LAKE SHORE DRIVE) (BALBO DRIVE TO 57TH DRIVE)**

SCALE: SHEET OF SHEETS STA. TO STA.

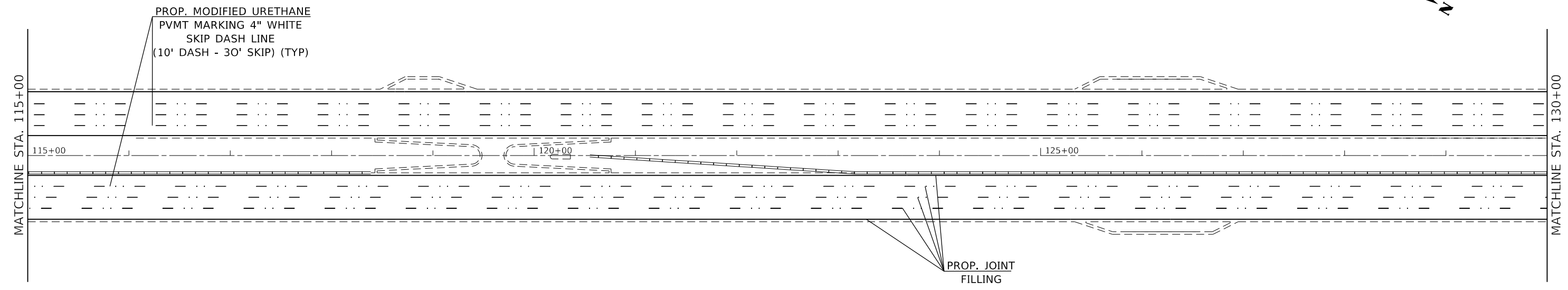
| F.A.P. RTE. | SECTION | COUNTY | TOTAL SHEETS | SHEET NO. |
|---------------------------|------------|--------|--------------------|-----------|
| 341 | 2020-063-1 | COOK | 28 | 8 |
| ILLINOIS FED. AID PROJECT | | | CONTRACT NO. 62L41 | |

U.S. ROUTE 41
(LAKE SHORE DRIVE)



EXIST. CURVE US41_E_32
 PI STA. = 109+93.84
 $\Delta = 16^\circ 18' 58''$ (RT)
 $D = 1^\circ 59' 46''$
 $R = 2,870.55'$
 $T = 411.51'$
 $L = 817.45'$
 $E = 29.35'$
 $e =$
 $T.R. =$
 $S.E. RUN =$
 $P.C. STA. = 105+82.33$
 $P.T. STA. = 113+99.78$

U.S. ROUTE 41
(LAKE SHORE DRIVE)



MODEL: Default
 FILE: h:\mfc_p\pub\barroom.dwg
 PROJECT: I:\Projects\146220\CADD\Drawings\146220-sh-41-bar.dwg

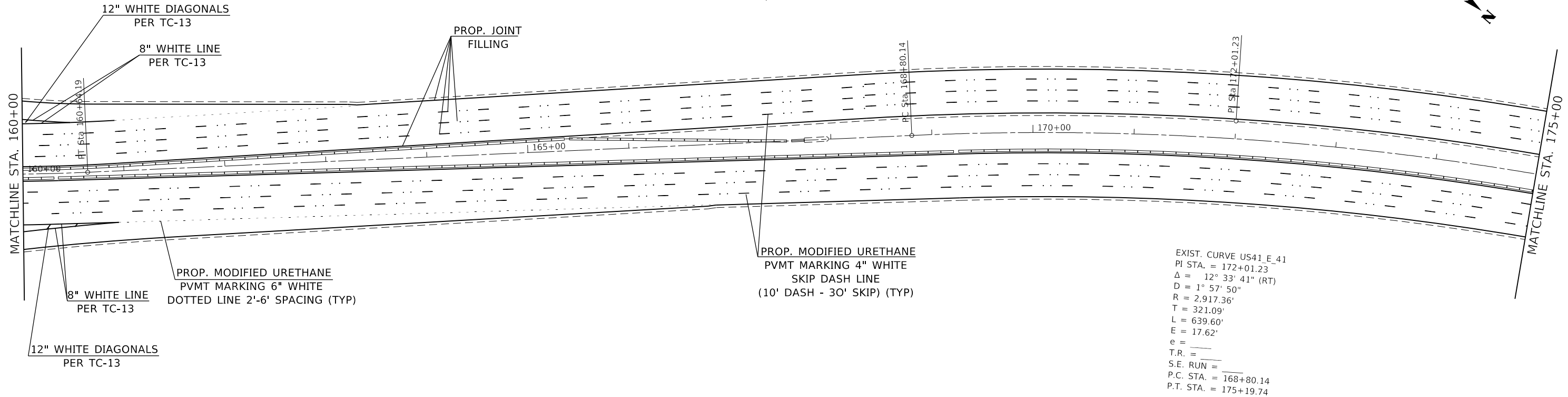
| | | |
|------------------------------|------------|-----------|
| USER NAME = somool | DESIGNED - | REVISED - |
| PLOT SCALE = 100,0000' / in. | DRAWN - | REVISED - |
| PLOT DATE = 8/13/2020 | CHECKED - | REVISED - |
| | DATE - | REVISED - |

STATE OF ILLINOIS
DEPARTMENT OF TRANSPORTATION

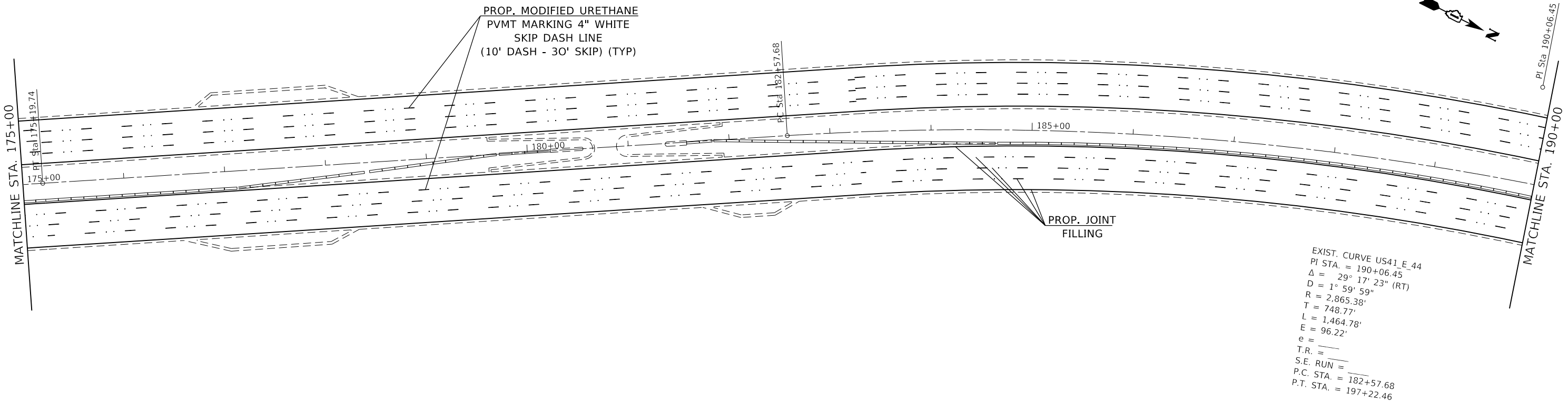
EXISTING AND PROPOSED PLAN
 U.S. ROUTE 41 (LAKE SHORE DRIVE) (BALBO DRIVE TO 57TH DRIVE)
 SCALE: 1" = 50'

| F.A.P. RTE. | SECTION | COUNTY | TOTAL SHEETS | SHEET NO. |
|---------------------------|------------|--------|--------------|-----------|
| 341 | 2020-063-I | COOK | 28 | 12 |
| CONTRACT NO. 62L41 | | | | |
| ILLINOIS FED. AID PROJECT | | | | |

U.S. ROUTE 41
(LAKE SHORE DRIVE)



U.S. ROUTE 41
(LAKE SHORE DRIVE)



MODEL: Default
 FILE: \\blm\c:\pub\blm\room\dat\illinois\gov\pww\DOT\Documents\DOT_Offices\Illinet\1\Projects\146220\CADD\Drawings\Design\146220-sh-41-bn.dgn

| | | |
|------------------------------|------------|-----------|
| USER NAME = somool | DESIGNED - | REVISED - |
| | DRAWN - | REVISED - |
| PLOT SCALE = 100,0000' / in. | CHECKED - | REVISED - |
| PLOT DATE = 8/13/2020 | DATE - | REVISED - |

STATE OF ILLINOIS
DEPARTMENT OF TRANSPORTATION

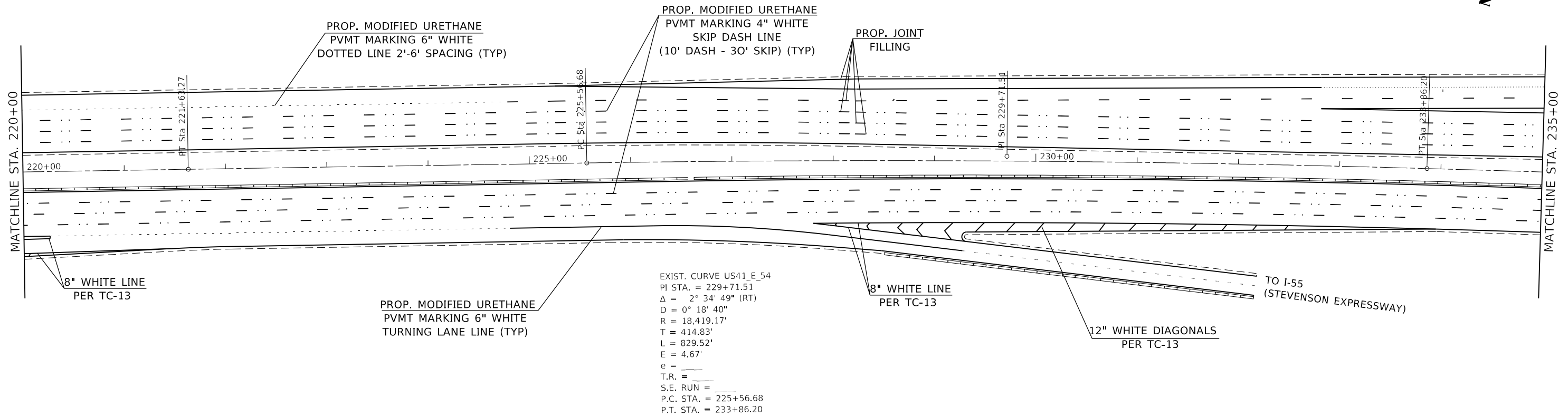
EXISTING AND PROPOSED PLAN
 U.S. ROUTE 41 (LAKE SHORE DRIVE) (BALBO DRIVE TO 57TH DRIVE)

| | | | | |
|--------------------|------------|--------|--------------|-----------|
| F.A.P. RTE. | SECTION | COUNTY | TOTAL SHEETS | SHEET NO. |
| 341 | 2020-063-I | COOK | 28 | 14 |
| CONTRACT NO. 62L41 | | | | |

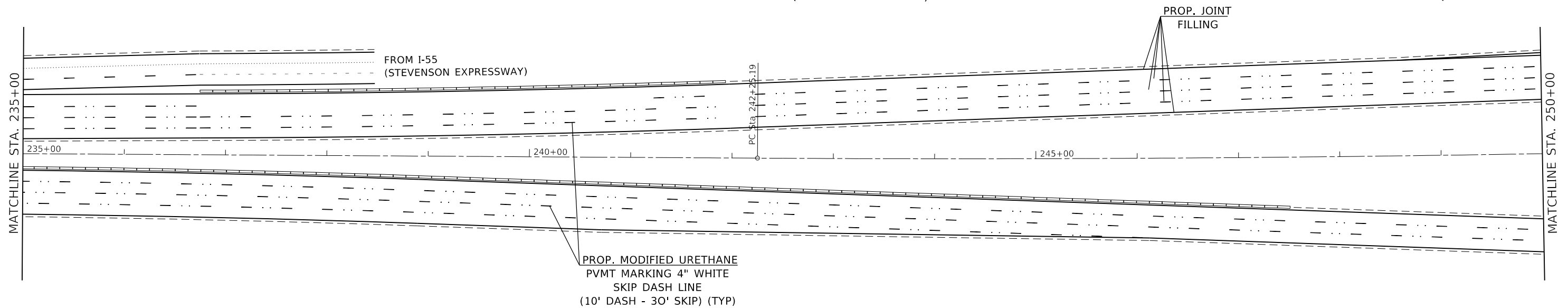
SCALE: 1" = 50' SHEET OF SHEETS STA. TO STA.

ILLINOIS FED. AID PROJECT

U.S. ROUTE 41
(LAKE SHORE DRIVE)



U.S. ROUTE 41
(LAKE SHORE DRIVE)



MODEL: Default
 FILE: \\bls01\p\pub\baronm.d\at\illinois.gov\PWIDOT\Documents\DOT_Offices\District_1\Projects\146220\CADD\Drawings\146220-sh-41-bar.dgn

| | | |
|------------------------------|------------|-----------|
| USER NAME = somool | DESIGNED - | REVISED - |
| PLOT SCALE = 100.0000' / in. | DRAWN - | REVISED - |
| PLOT DATE = 8/13/2020 | CHECKED - | REVISED - |
| | DATE - | REVISED - |

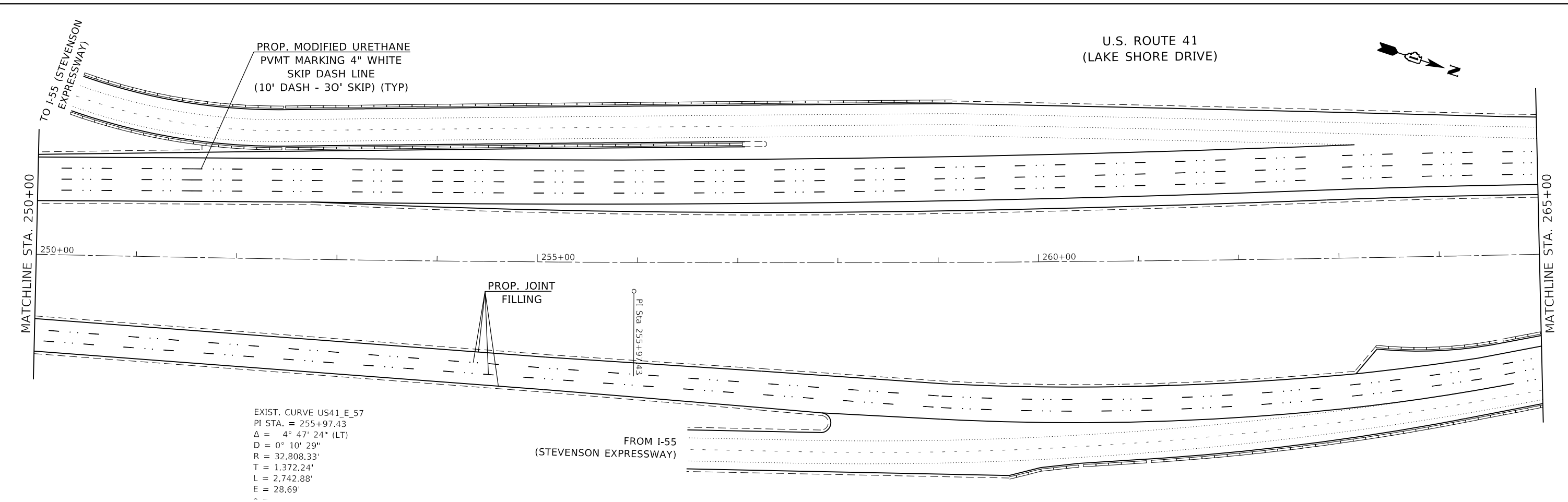
STATE OF ILLINOIS
DEPARTMENT OF TRANSPORTATION

EXISTING AND PROPOSED PLAN
U.S. ROUTE 41 (LAKE SHORE DRIVE) (BALBO DRIVE TO 57TH DRIVE)

SCALE: 1" = 50' SHEET OF SHEETS STA. TO STA.

| | | | | |
|--------------------|--------------------|-------------|---------------------------|--------------|
| F.A.P. RTE. 341 | SECTION 2020-063-I | COUNTY COOK | TOTAL SHEETS 28 | SHEET NO. 16 |
| CONTRACT NO. 62L41 | | | ILLINOIS FED. AID PROJECT | |

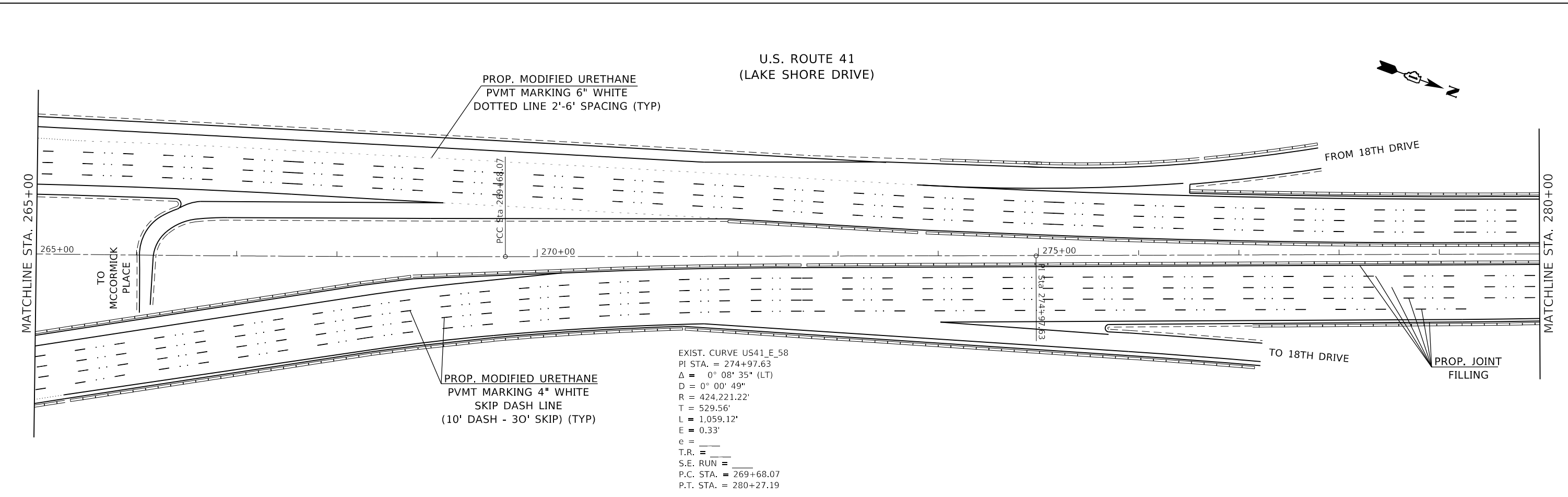
U.S. ROUTE 41
(LAKE SHORE DRIVE)



EXIST. CURVE US41_E_57
 PI STA. = 255+97.43
 $\Delta = 4^\circ 47' 24''$ (LT)
 $D = 0^\circ 10' 29''$
 $R = 32,808.33'$
 $T = 1,372.24'$
 $L = 2,742.88'$
 $E = 28.69'$

FROM I-55
(STEVENSON EXPRESSWAY)

U.S. ROUTE 41
(LAKE SHORE DRIVE)



PROP. MODIFIED URETHANE
 PVMT MARKING 4" WHITE
 SKIP DASH LINE
 (10' DASH - 30' SKIP) (TYP)

EXIST. CURVE US41_E_58
 PI STA. = 274+97.63
 $\Delta = 0^\circ 08' 35''$ (LT)
 $D = 0^\circ 00' 49''$
 $R = 424,221.22'$
 $T = 529.56'$
 $L = 1,059.12'$
 $E = 0.33'$
 $e =$
 $T.R. =$
 $S.E. RUN =$
 $P.C. STA. = 269+68.07$
 $P.T. STA. = 280+27.19$

FROM 18TH DRIVE

TO 18TH DRIVE

PROP. JOINT FILLING

TO MCCORMICK PLACE

MODEL: Default
 FILE: Model: Project: 146220\Cadd\Drawings\146220-sh-1-bn.dgn

| | | |
|------------------------------|------------|-----------|
| USER NAME = somool | DESIGNED - | REVISED - |
| | DRAWN - | REVISED - |
| PLOT SCALE = 100,0000' / in. | CHECKED - | REVISED - |
| PLOT DATE = 8/13/2020 | DATE - | REVISED - |

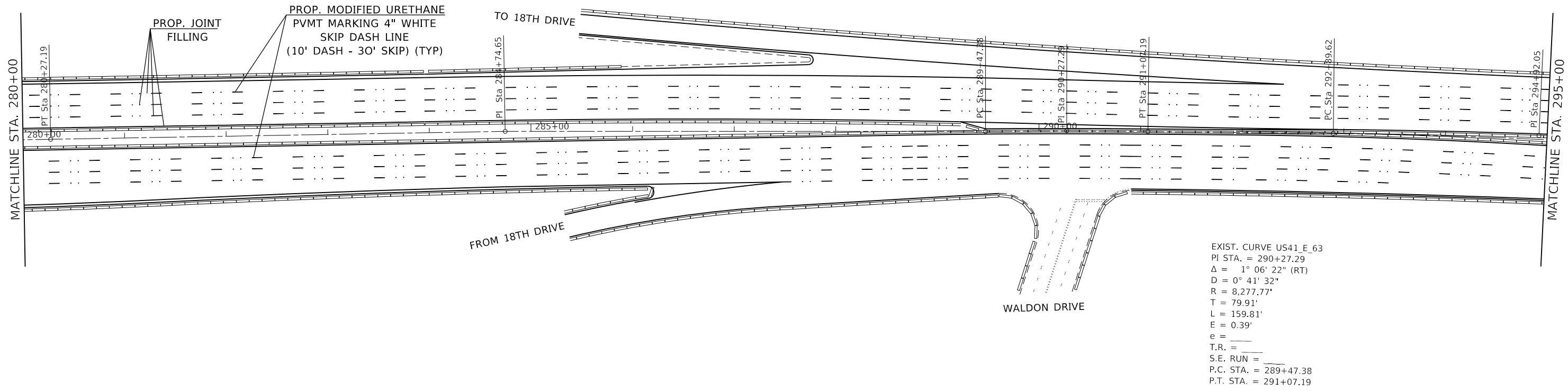
**STATE OF ILLINOIS
DEPARTMENT OF TRANSPORTATION**

**EXISTING AND PROPOSED PLAN
U.S. ROUTE 41 (LAKE SHORE DRIVE) (BALBO DRIVE TO 57TH DRIVE)**

SCALE: 1"= 50' SHEET OF SHEETS STA. TO STA.

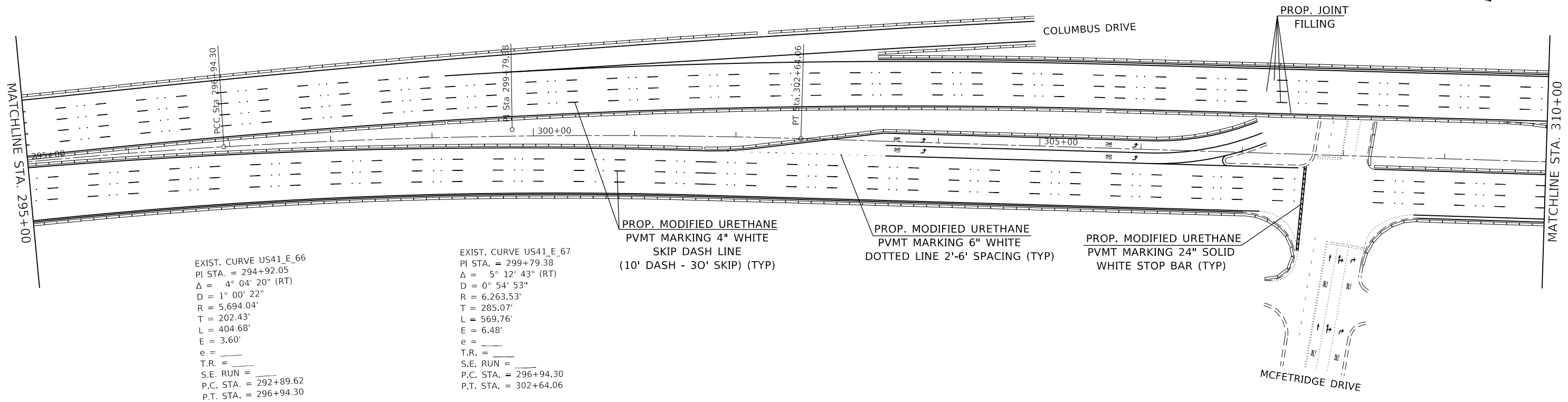
| F.A.P. RTE. | SECTION | COUNTY | TOTAL SHEETS | SHEET NO. |
|---------------------------|------------|--------|--------------|-----------|
| 341 | 2020-063-I | COOK | 28 | 17 |
| CONTRACT NO. 62L41 | | | | |
| ILLINOIS FED. AID PROJECT | | | | |

U.S. ROUTE 41
(LAKE SHORE DRIVE)



EXIST. CURVE US41_E_63
 PI STA. = 290+27.29
 $\Delta = 1^\circ 06' 22''$ (RT)
 $D = 0^\circ 41' 32''$
 $R = 8,277.77'$
 $T = 79.91'$
 $L = 159.81'$
 $E = 0.39'$
 $e =$
 $T.R. =$
 $S.E. RUN =$
 $P.C. STA. = 289+47.38$
 $P.T. STA. = 291+07.19$

U.S. ROUTE 41
(LAKE SHORE DRIVE)



EXIST. CURVE US41_E_66
 PI STA. = 294+92.05
 $\Delta = 4^\circ 04' 20''$ (RT)
 $D = 1^\circ 00' 22''$
 $R = 5,694.04'$
 $T = 202.43'$
 $L = 404.68'$
 $E = 3.60'$
 $e =$
 $T.R. =$
 $S.E. RUN =$
 $P.C. STA. = 292+89.62$
 $P.T. STA. = 296+94.30$

EXIST. CURVE US41_E_67
 PI STA. = 299+79.38
 $\Delta = 5^\circ 12' 43''$ (RT)
 $D = 0^\circ 54' 53''$
 $R = 6,263.53'$
 $T = 285.07'$
 $L = 569.76'$
 $E = 6.48'$
 $e =$
 $T.R. =$
 $S.E. RUN =$
 $P.C. STA. = 296+94.30$
 $P.T. STA. = 302+64.06$

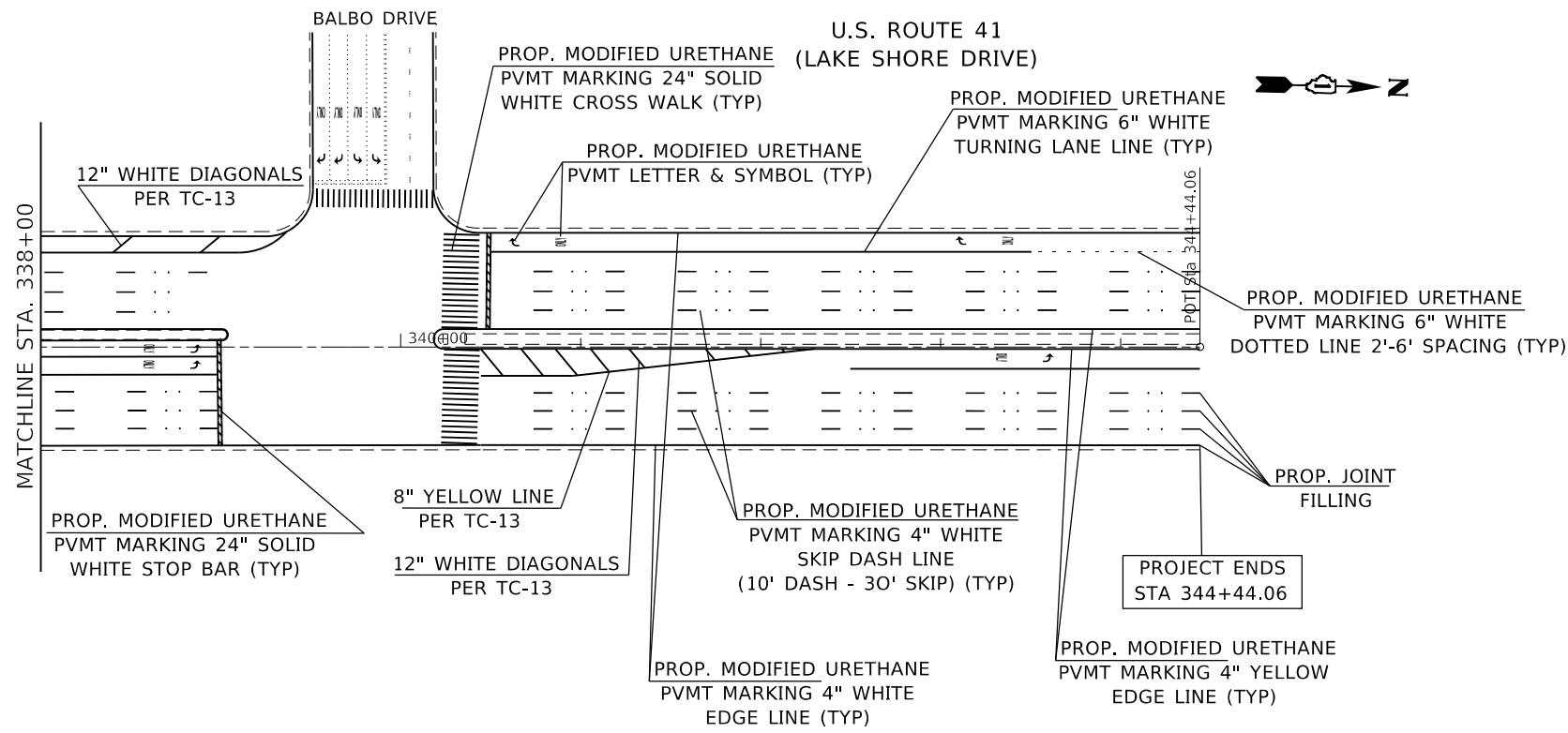
MODEL: Default
 FILE: Model: p:\pub\baron.com.dta\illinois.gov\pww\DOT\Documents\DOT_Offices\Illinet_1\Projects\146220\CADD\Drawings\146220-sh-41-bar.dgn

| | | |
|------------------------------|------------|-----------|
| USER NAME = somool | DESIGNED - | REVISED - |
| PLOT SCALE = 100,0000' / in. | DRAWN - | REVISED - |
| PLOT DATE = 8/13/2020 | CHECKED - | REVISED - |
| | DATE - | REVISED - |

STATE OF ILLINOIS
DEPARTMENT OF TRANSPORTATION

EXISTING AND PROPOSED PLAN
 U.S. ROUTE 41 (LAKE SHORE DRIVE) (BALBO DRIVE TO 57TH DRIVE)
 SCALE: 1"= 50' SHEET OF SHEETS STA. TO STA.

| F.A.P. RTE. | SECTION | COUNTY | TOTAL SHEETS | SHEET NO. |
|---------------------------|------------|--------|--------------|-----------|
| 341 | 2020-063-I | COOK | 28 | 18 |
| CONTRACT NO. 62L41 | | | | |
| ILLINOIS FED. AID PROJECT | | | | |



MODEL: Default
 FILE: \\nlsdot\pub\planroom\dat\illinois.gov\PWIDOT\Documents\DOT_Offices\District_1\Projects\146220\CADD\Drawings\146220-sh-41-ls.dgn

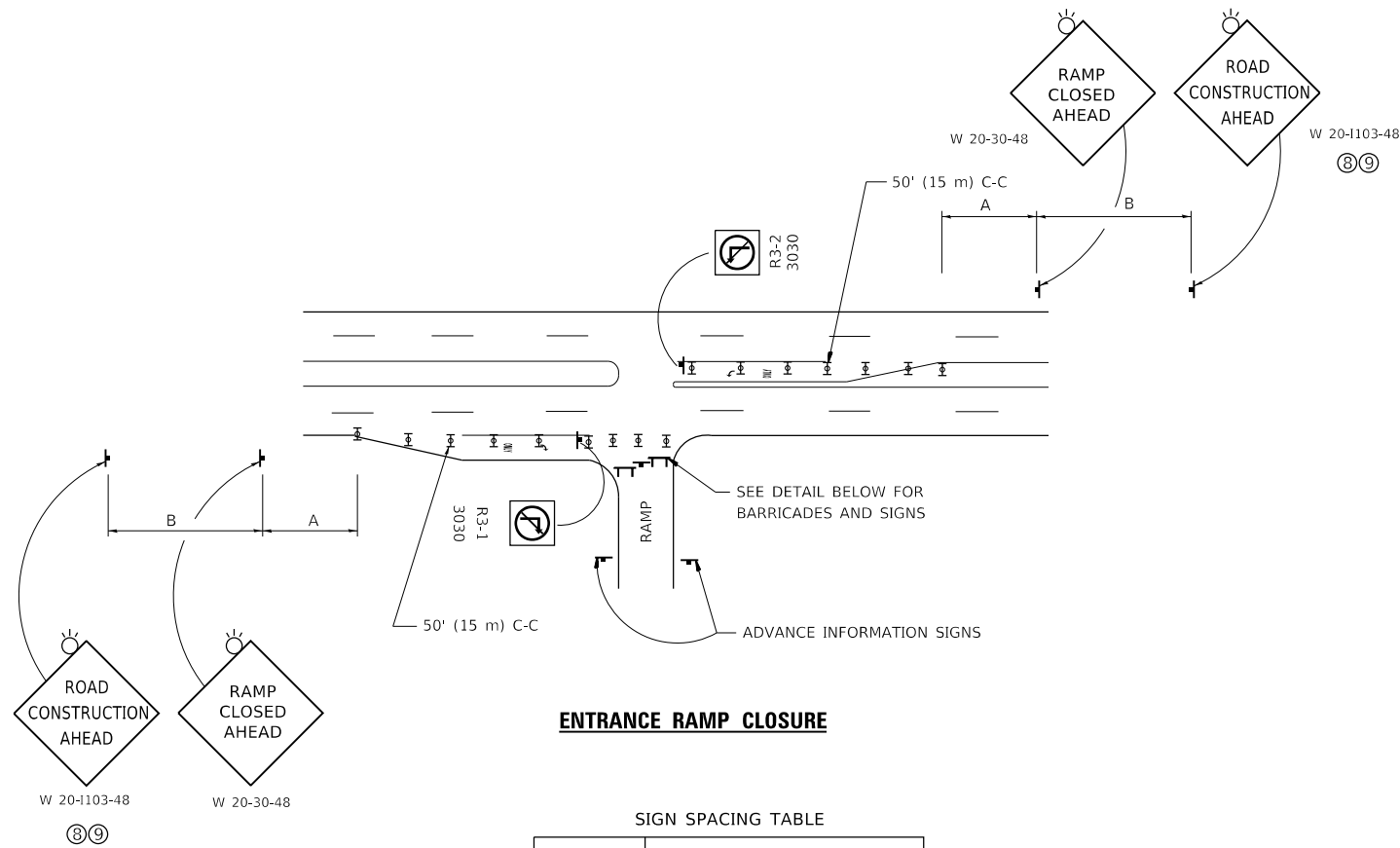
| | | |
|-------------------------------|------------|-----------|
| USER NAME = somool | DESIGNED - | REVISED - |
| | DRAWN - | REVISED - |
| PLOT SCALE = 100.0000 ' / in. | CHECKED - | REVISED - |
| PLOT DATE = 8/13/2020 | DATE - | REVISED - |

STATE OF ILLINOIS
DEPARTMENT OF TRANSPORTATION

EXISTING AND PROPOSED PLAN
U.S. ROUTE 41 (LAKE SHORE DRIVE) (BALBO DRIVE TO 57TH DRIVE)

SCALE: 1" = 50' SHEET OF SHEETS STA. TO STA.

| | | | | |
|---------------------------|------------|--------|--------------|-----------|
| F.A.P. RTE. | SECTION | COUNTY | TOTAL SHEETS | SHEET NO. |
| 341 | 2020-063-I | COOK | 28 | 20 |
| CONTRACT NO. 62L41 | | | | |
| ILLINOIS FED. AID PROJECT | | | | |

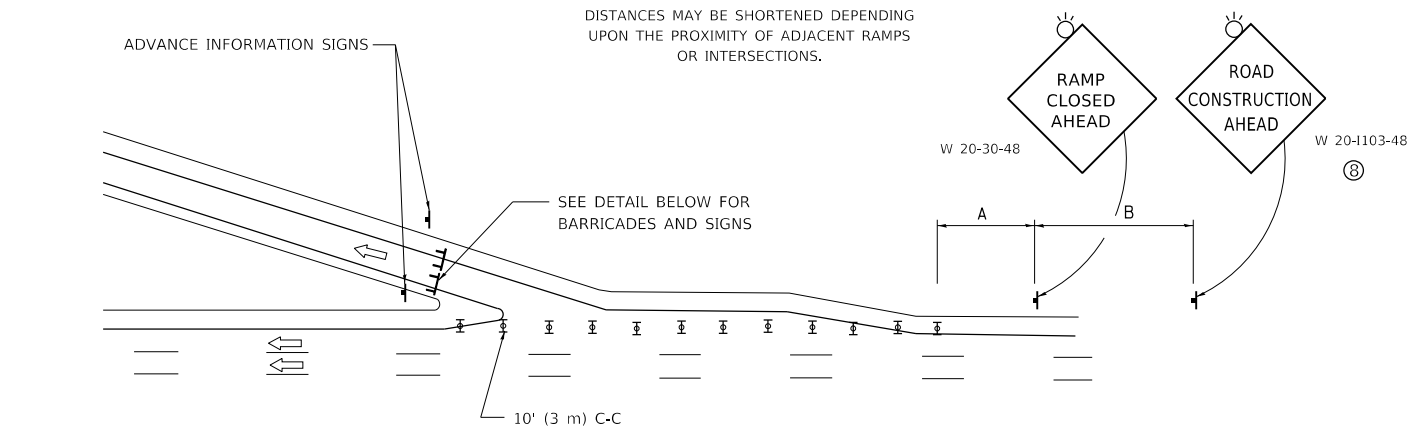


ENTRANCE RAMP CLOSURE

SIGN SPACING TABLE

| FACILITY | DISTANCE BETWEEN SIGNS | |
|----------------------|------------------------|------------------|
| | A | B |
| EXPRESSWAY >24 HOURS | 1000' (300 m) | 1500' (450 m) |
| EXPRESSWAY ≤24 HOURS | 500' (150 m) | 500' (150 m) |
| ARTERIAL 55 MPH | 500' (150 m) | 500' (150 m) |
| ARTERIAL 50-45 MPH | 350' (100 m) | 350' (100 m) |
| ARTERIAL <45 MPH | 200' (60 m) | 200' (60 m) |

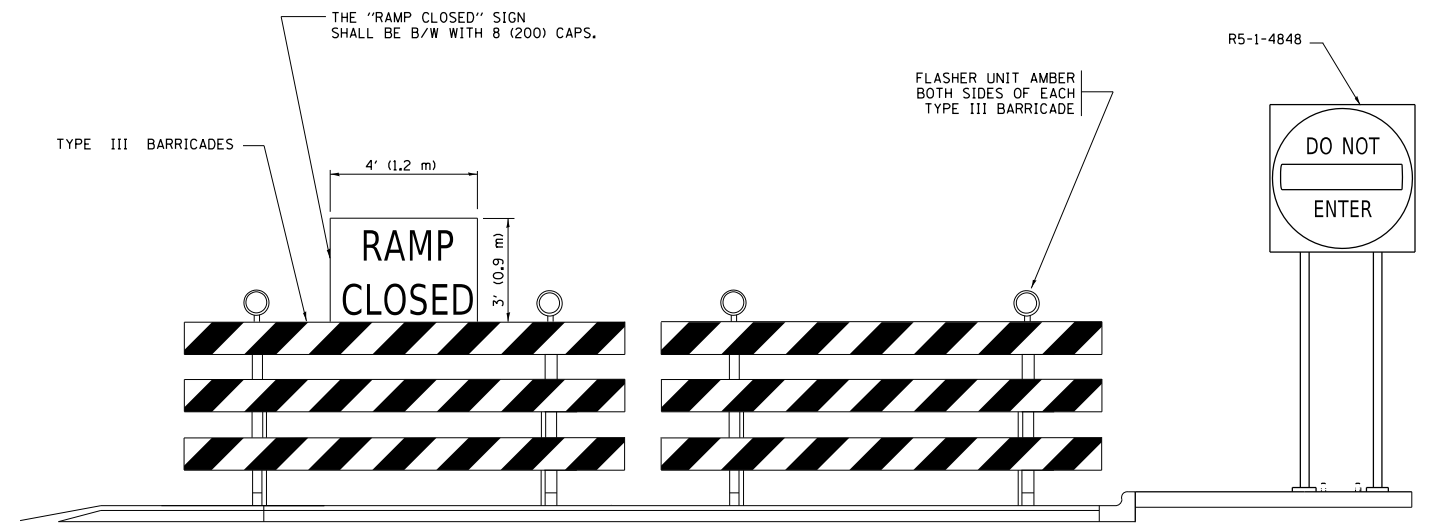
DISTANCES MAY BE SHORTENED DEPENDING UPON THE PROXIMITY OF ADJACENT RAMPS OR INTERSECTIONS.



EXIT RAMP CLOSURE

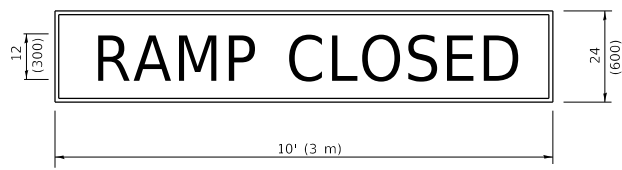
SYMBOLS

- ☐ TYPE II BARRICADE OR DRUM
- ☐ TYPE III BARRICADE WITH 2 FLASHING LIGHTS



DETAIL FOR REQUIRED BARRICADES & SIGNS

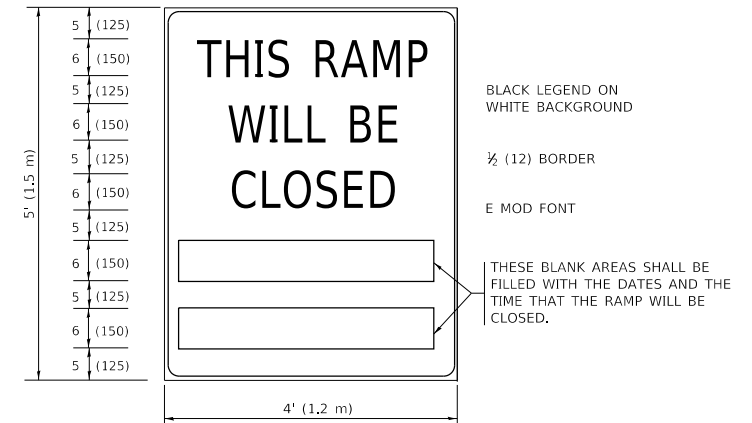
RAMP CLOSURE ADVANCE WARNING SIGN



BLACK LEGEND ON ORANGE BACKGROUND MOUNTED DIAGONALLY
E MOD FONT
1 (25) BORDER

THESE SIGNS ARE REQUIRED ON ALL THE EXIT GUIDE SIGNS FOR EXIT RAMPS THAT WILL BE CLOSED FOR MORE THAN FOUR (4) CONSECUTIVE DAYS.

RAMP CLOSURE ADVANCE INFORMATION SIGN



BLACK LEGEND ON WHITE BACKGROUND

1/2 (12) BORDER

E MOD FONT

THESE BLANK AREAS SHALL BE FILLED WITH THE DATES AND THE TIME THAT THE RAMP WILL BE CLOSED.

THESE SIGNS ARE REQUIRED ON BOTH SIDES OF THE RAMP, MINIMUM OF 1 WEEK IN ADVANCE OF THE CLOSURE.

THESE SIGNS SHALL BE FABRICATED AND PAID FOR ACCORDING TO THE TEMPORARY INFORMATION SIGNING SPECIAL PROVISION

GENERAL NOTES:

- ① CONES MAY BE SUBSTITUTED FOR DRUMS OR TYPE II BARRICADES DURING DAY OPERATIONS. CONES SHALL BE A MINIMUM OF 28 (700) HIGH.
- ② VERTICAL BARRICADES SHALL NOT BE USED FOR RAMP CLOSURES.
- ③ A FLAGGER SHALL BE POSITIONED AT EACH CLOSED RAMP THAT IS OPEN TO CONSTRUCTION VEHICLES, PRECEDED BY A W20-7 FLAGGER WARNING SIGN.
- ④ ALL ROUTE MARKERS AND TRAILBLAZER ASSEMBLIES WHICH DIRECT MOTORISTS TO A CLOSED ENTRANCE RAMP SHALL BE COVERED WHEN THE RAMP IS CLOSED FOR MORE THAN FOUR (4) DAYS.
- ⑤ THE SIGNING AND BARRICADING WHICH IS REQUIRED BY THIS DETAIL SHALL BE INCLUDED IN THE COST OF TRAFFIC CONTROL AND PROTECTION (EXPRESSWAYS).
- ⑥ AUTHORIZATION FROM THE DISTRICT'S BUREAU OF TRAFFIC IS REQUIRED FOR ALL RAMP CLOSURES.
- ⑦ THE RAMP CLOSURE ADVANCE INFORMATION SIGNS SHALL BE ERECTED IF THE CLOSURE TIME EXCEEDS TWENTY-FOUR (24) HOURS. ADDITIONAL ADVANCE WARNING SIGNS ON EXIT GUIDE SIGNING WILL BE REQUIRED FOR EXIT RAMP CLOSURES THAT EXCEED FOUR (4) DAYS IN LENGTH.
- ⑧ ROAD CONSTRUCTION AHEAD SIGNS MAY BE OMITTED WHEN THIS DETAIL IS USED IN CONJUNCTION WITH OTHER TRAFFIC CONTROL THAT ALREADY INCLUDES A ROAD CONSTRUCTION AHEAD SIGN.
- ⑨ ARTERIAL ROAD CONSTRUCTION AHEAD SIGNS SHALL BE INSTALLED ON THE LEFT SIDE OF TRAFFIC IF THE MEDIAN IS MORE THAN 10 FT WIDE.

ALL DIMENSIONS ARE IN INCHES (MILLIMETERS) UNLESS OTHERWISE SHOWN.

MODEL: Default
FILE: \\nas01\pub\baronm\ad\illinois\pww\DOT\Documents\DOT - Offices\Dir\et - 1\Projects\146220\CaddData\Design\DESIGN.dgn

| | | |
|------------------------------|-------------------|------------------------|
| USER NAME = somool | DESIGNED - D.W.S. | REVISED - S.P.B._01-07 |
| | DRAWN - | REVISED - S.P.B._12-09 |
| PLOT SCALE = 100.0000' / in. | CHECKED - | REVISED - M.D._06-13 |
| PLOT DATE = 8/13/2020 | DATE - 02-83 | REVISED - M.D._01-18 |

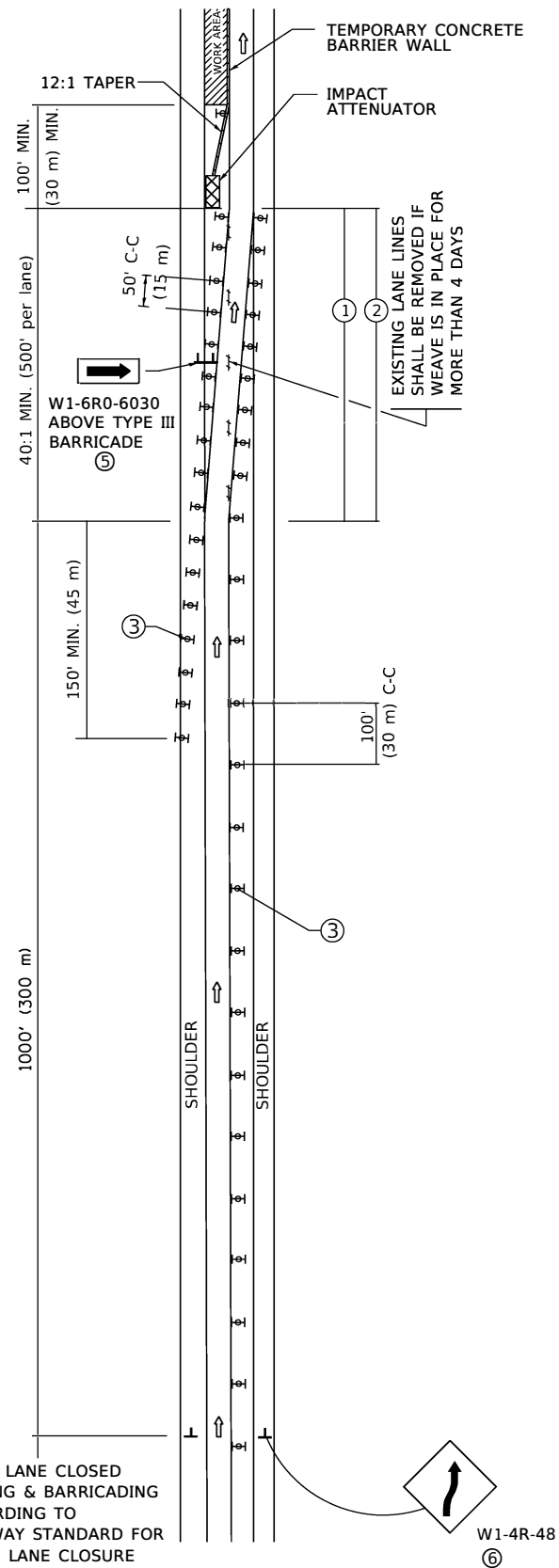
**STATE OF ILLINOIS
DEPARTMENT OF TRANSPORTATION**

**ENTRANCE_AND_EXIT_RAMP
CLOSURE_DETAILS**

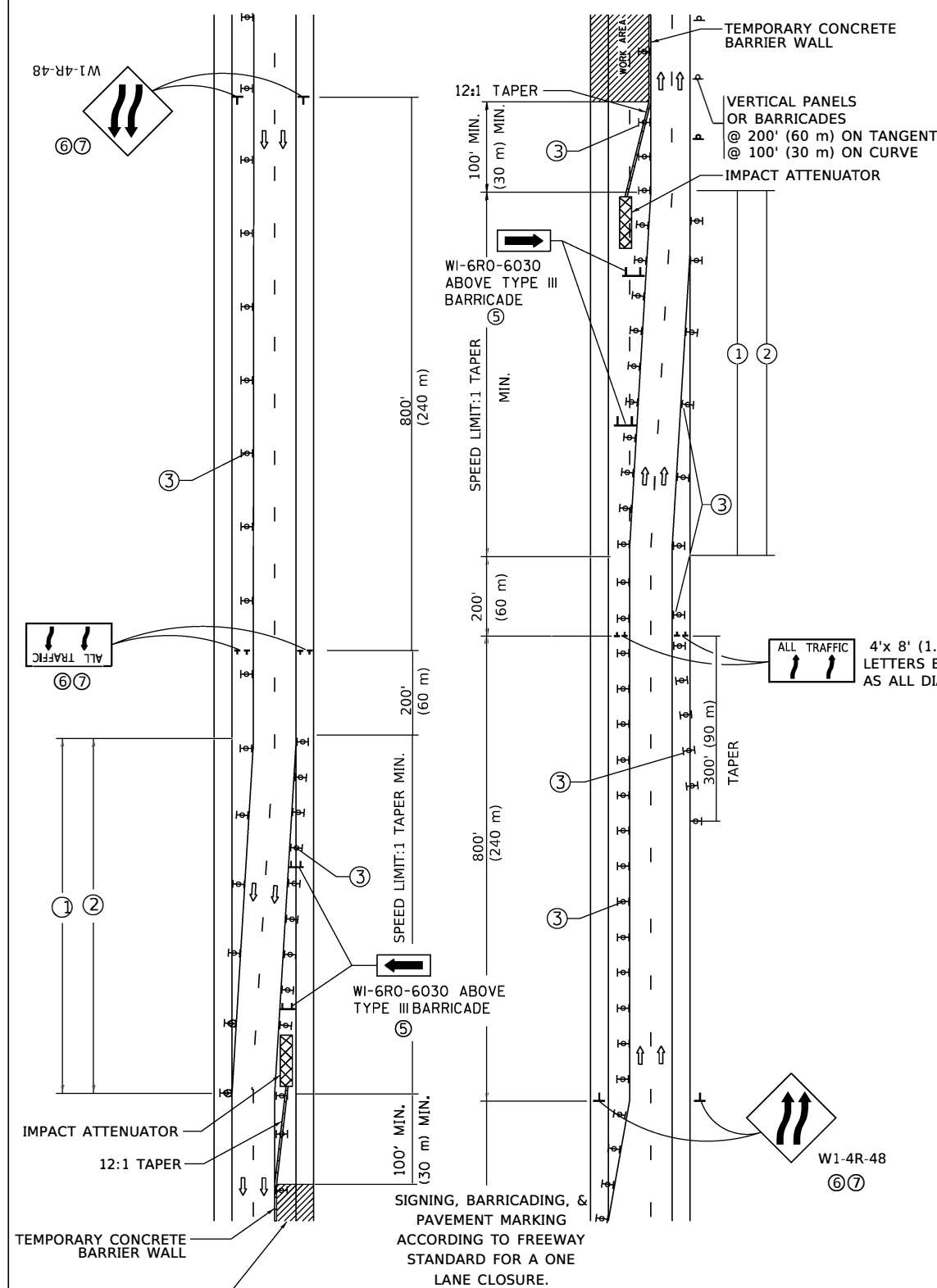
SCALE: NONE SHEET 1 OF 1 SHEETS STA. TO STA.

| F.A. RTE. | SECTION | COUNTY | TOTAL SHEETS | SHEET NO. |
|-----------|------------|---------------------------|--------------|-----------|
| 341 | 2020-063-I | COOK | 28 | 21 |
| TC-08 | | CONTRACT NO. 62L41 | | |
| | | ILLINOIS FED. AID PROJECT | | |

SINGLE LANE WEAVE



MULTI-LANE WEAVE



GENERAL NOTES:

- ① EXISTING CONFLICTING PAVEMENT MARKING LINES SHALL BE REMOVED. PAVEMENT MARKING REMOVAL SHALL NOT BE REQUIRED FOR SINGLE LANE WEAVES UNDER 4 DAYS IN DURATION.
- ② CONTINUOUS REFLECTIVE TEMPORARY PAVEMENT MARKING TAPE SHALL BE PLACED THROUGHOUT THE TAPER AND FOR 300' (90 m) ALONG SIDE THE WORK AREA WHERE THE CLOSURE TIME IS GREATER THAN FOURTEEN DAYS. THE LEFT EDGE LINE SHALL BE YELLOW AND THE RIGHT EDGE LINE SHALL BE WHITE. FOR MULTI-LANE WEAVES LANE LINES SHALL BE 5 INCH, 10'-30' (3 m-9 m) SKIP DASH, WHITE.
- ③ PLASTIC DRUMS WITH STEADY BURN LIGHTS AT 50' (15 m) C-C SPACING IN TAPERS AND 100' (30 m) C-C SPACING IN TANGENTS.
- ④ ALL SIGNS SHALL BE POST MOUNTED IF THE CLOSURE TIME EXCEEDS FOUR DAYS.
- ⑤ TYPE III BARRICADES MAY BE OMITTED FOR SINGLE-LANE WEAVES UNDER 24-HOURS IN DURATION. W1-6 SIGNS WILL STILL BE REQUIRED. IF THE WIDTH OF OFFSET IS LESS THAN 6' THEN THE TYPE III BARRICADE WITH ATTACHED ARROW SIGN PANEL CAN BE ELIMINATED IN THE TAPER AREAS.
- ⑥ WHEN THE LENGTH OF THE SHIFTED SEGMENT (DISTANCE BETWEEN WEAVE POINTS) IS LESS THAN 1500', DOUBLE REVERSE CURVE SIGNS (W24-1) SHOULD BE USED INSTEAD OF THE REVERSE CURVE (W1-4) SIGNS. ARROWS ON THE 4'X8' "ALL TRAFFIC" SIGNS SHALL BE THE SAME SHAPE.
- ⑦ THE NUMBER OF ARROWS ON THESE SIGNS SHALL MATCH THE NUMBER OF LANES OPEN TO TRAFFIC.

SYMBOLS

- DIRECTION OF TRAFFIC
- WORK AREA
- SIGN ON PORTABLE OR PERMANENT SUPPORT
- TYPE II BARRICADE OR DRUM WITH MONO-DIRECTIONAL STEADY BURNING LIGHT
- TEMPORARY CONCRETE BARRIER WALL
- IMPACT ATTENUATOR
- W1-4R-48
- W24-1-48

ALL DIMENSIONS ARE IN INCHES (MILLIMETERS) UNLESS OTHERWISE SHOWN

MODEL: Default
FILE: MainE_PlanRoom.dwg
PROJECT: I:\Projects\146220\CADD\Drawings\Design\DS5.dwg

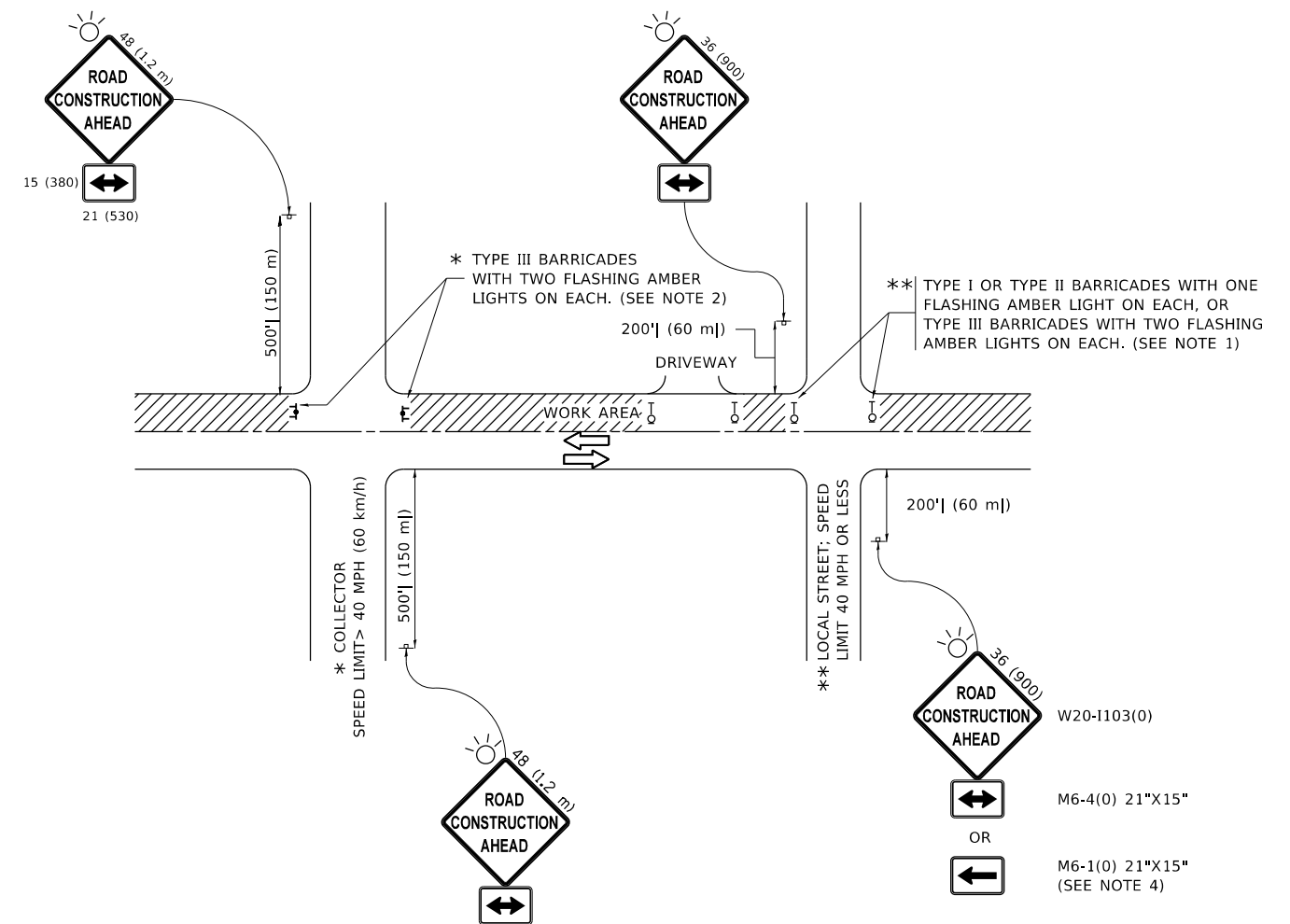
| | | |
|------------------------------|-------------------|------------------------|
| USER NAME = somool | DESIGNED - D.W.S. | REVISED - J.A.F. 02-06 |
| | DRAWN - | REVISED - S.P.B. 01-07 |
| PLOT SCALE = 100.0000' / in. | CHECKED - | REVISED - S.P.B. 12-09 |
| PLOT DATE = 9/21/2020 | DATE - 02-87 | REVISED - M.D. 06-13 |

**STATE OF ILLINOIS
DEPARTMENT OF TRANSPORTATION**

**TRAFFIC CONTROL DETAILS FOR
FREEWAY SINGLE & MULTI-LANE WEAVE**

SCALE: NONE SHEET 1 OF 1 SHEETS STA. TO STA.

| F.A. RTE. | SECTION | COUNTY | TOTAL SHEETS | SHEET NO. |
|---------------------------|------------|--------------------|--------------|-----------|
| 341 | 2020-063-1 | COOK | 28 | 21A |
| TC-09 | | CONTRACT NO. 62L41 | | |
| ILLINOIS FED. AID PROJECT | | | | |



NOTES:

1. SIDE ROAD WITH A SPEED LIMIT OF 40 MPH (60 km/h) OR LESS AS SHOWN ON THE DRAWING AND AS DIRECTED BY THE ENGINEER:
 - a) ONE "ROAD CONSTRUCTION AHEAD" SIGN 36 x 36 (900x900) WITH A FLASHER MOUNTED ON IT APPROXIMATELY 200' (60 m) IN ADVANCE OF THE MAIN ROUTE.
 - b) THE CLOSED PORTION OF THE MAIN ROUTE SHALL BE PROTECTED BY BLOCKING WITH TYPE I, TYPE II OR TYPE III BARRICADES, 1/3 OF THE CROSS SECTION OF THE CLOSED PORTION.
2. SIDE ROAD WITH A SPEED LIMIT GREATER THAN 40 MPH (60 km/h) AS SHOWN ON THE DRAWING AND AS DIRECTED BY THE ENGINEER:
 - a) ONE "ROAD CONSTRUCTION AHEAD" SIGN 48 x 48 (1.2 m x 1.2 m) WITH A FLASHER MOUNTED ON IT APPROXIMATELY 500' (150 m) IN ADVANCE OF THE MAIN ROUTE.
 - b) BLOCKING WITH TYPE III BARRICADES, 1/2 OF THE CROSS SECTION OF THE CLOSED PORTION.
3. CONES MAY BE SUBSTITUTED FOR BARRICADES OR DRUMS AT HALF THE SPACING DURING DAY OPERATIONS. CONES SHALL BE A MINIMUM OF 28 (710) IN HEIGHT.
4. SIGNING AND THE WORK ZONE, A SINGLE HEADED ARROW (M6-1) SHALL BE USED IN LIEU OF THE DOUBLE HEADED ARROW (M6-4).
5. WHEN WORK IS BEING PERFORMED ON A SIDE ROAD OR DRIVEWAY, FOLLOW THE APPLICABLE STANDARD(S). THE DIRECTIONAL ARROW (M6-1 OR M6-4) SHALL BE COVERED OR REMOVED WHEN NO LONGER CONSISTENT WITH THE TRAFFIC CONTROL SET-UP.
6. ADVANCE WARNING SIGNS ARE TO BE OMITTED ON DRIVEWAYS UNLESS OTHERWISE SPECIFIED IN THE PLANS OR BY THE ENGINEER.
7. THE TRAFFIC CONTROL AND PROTECTION FOR SIDE ROADS, INTERSECTIONS, AND DRIVEWAYS SHALL BE INCLUDED IN THE COST OF SPECIFIED TRAFFIC CONTROL STANDARDS OR ITEMS.

All dimensions are in inches (millimeters) unless otherwise shown.

MODEL: Default
 FILE: \\nlsdc-prod\planroom\dat\illinois.gov\PWIDOT\Documents\DOT_Offices\Director_1\Projects\146220\CADD\Drawings\Design\DESIGN.dgn

| | | |
|------------------------------|-------------------|---------------------------------|
| USER NAME = somool | DESIGNED - L.H.A. | REVISED - A. HOUSEH 10-15-96 |
| PLOT SCALE = 100.0000' / in. | CHECKED - | REVISED - T. RAMMACHER 01-06-00 |
| PLOT DATE = 8/13/2020 | DATE - 06-89 | REVISED - A. SCHUETZE 07-01-13 |
| | | REVISED - A. SCHUETZE 09-15-16 |

**STATE OF ILLINOIS
DEPARTMENT OF TRANSPORTATION**

**TRAFFIC CONTROL AND PROTECTION FOR
SIDE ROADS, INTERSECTIONS, AND DRIVEWAYS**

SCALE: NONE SHEET 1 OF 1 SHEETS STA. TO STA.

| F.A. RTE. | SECTION | COUNTY | TOTAL SHEETS | SHEET NO. |
|---------------------------|------------|--------------------|--------------|-----------|
| 341 | 2020-063-I | COOK | 28 | 22 |
| TC-10 | | CONTRACT NO. 62L41 | | |
| ILLINOIS FED. AID PROJECT | | | | |

TURN BAY ENTRANCE AT START OF LANE CLOSURE TAPER

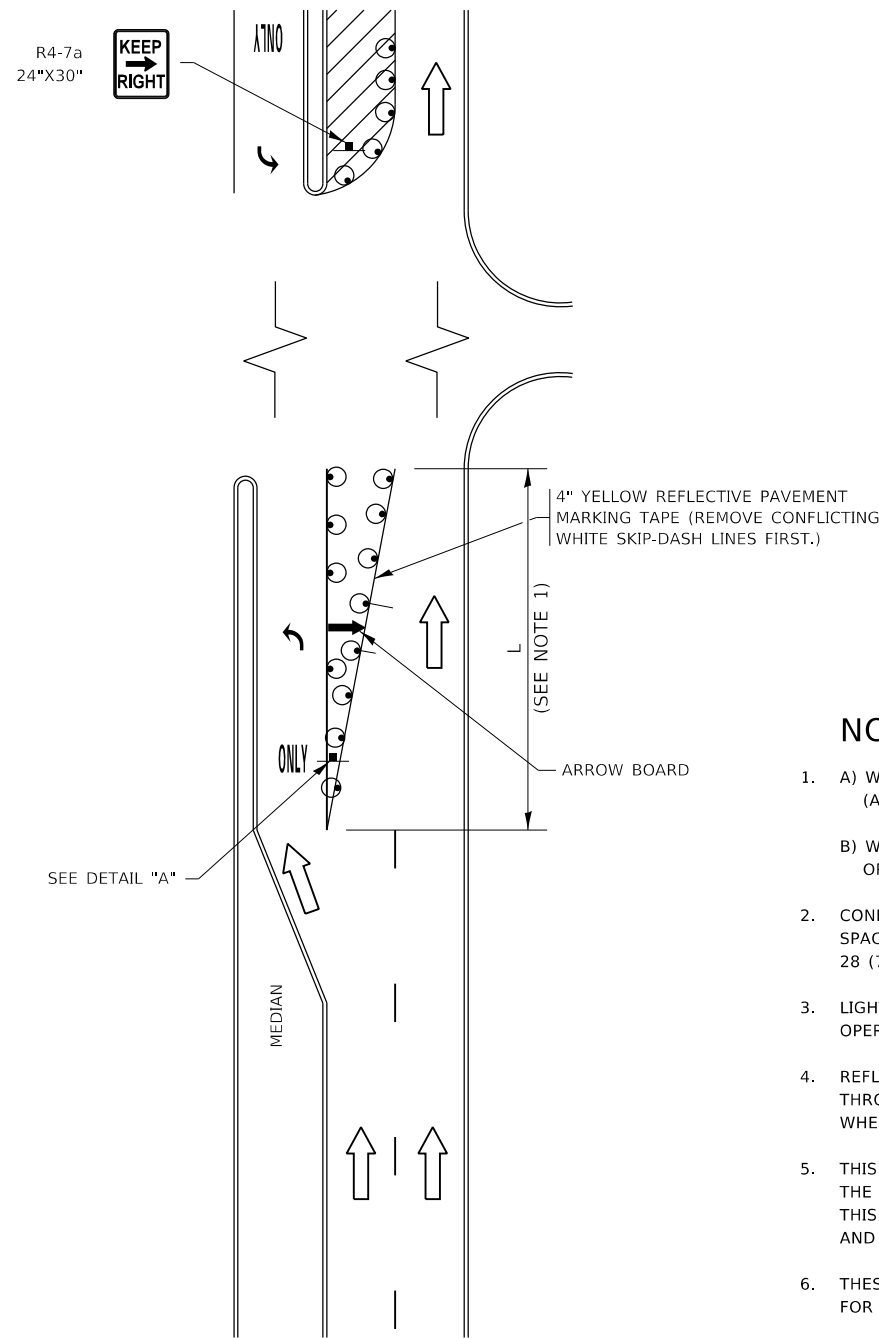


FIGURE 1

TURN BAY ENTRANCE WITHIN A LANE CLOSURE

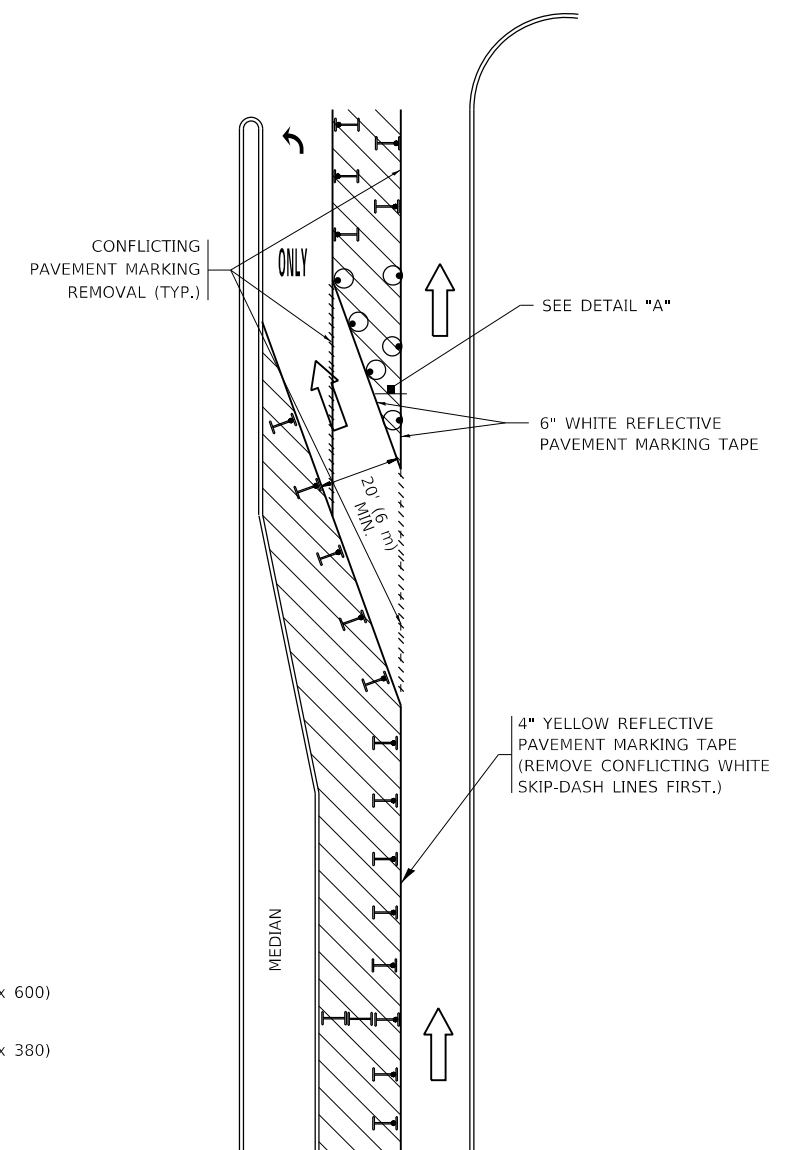


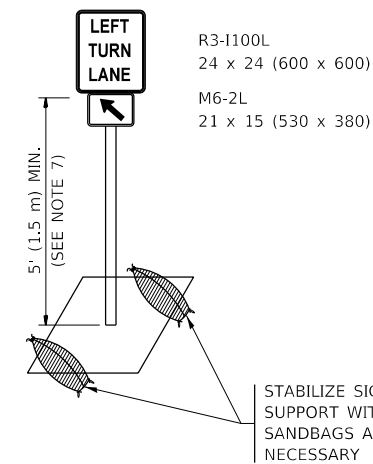
FIGURE 2

LEGEND

- WORK AREA
- LANE OPEN TO TRAFFIC
- ARROW BOARD
- TYPE I OR II BARRICADE OR DRUM WITH STEADY BURN LIGHT
- DRUM WITH STEADY BURN LIGHT
- SIGN ASSEMBLY
- TYPE I OR II CHECK BARRICADE WITH FLASHING LIGHT

NOTES:

1. A) WHEN "L" IS \leq THE STORAGE LENGTH OF THE TURN LANE (AS SHOWN IN FIG. 1), USE FIGURE 1.
B) WHEN "L" IS $>$ THE STORAGE LENGTH OF THE TURN LANE OR THE TURN LANE IS WITHIN THE LANE CLOSURE, USE FIGURE 2.
2. CONES MAY BE SUBSTITUTED FOR BARRICADES OR DRUMS AT HALF THE SPACING DURING DAY OPERATIONS. CONES SHALL BE A MINIMUM OF 28 (710) IN HEIGHT.
3. LIGHTS WILL NOT BE REQUIRED ON BARRICADES OR DRUMS FOR DAY OPERATIONS. ALL LIGHTS SHALL BE MONODIRECTIONAL.
4. REFLECTIVE TEMPORARY PAVEMENT MARKINGS SHALL BE PLACED THROUGHOUT THE BARRICADED AREAS OF EACH TURN BAY AS SHOWN WHERE THE CLOSURE TIME IS GREATER THAN FOURTEEN (14) DAYS.
5. THIS APPLICATION ALSO APPLIES WHEN WORK IS BEING PERFORMED IN THE RIGHT LANE(S) AND THE RIGHT TURN BAY IS TO REMAIN OPEN. UNDER THIS CONDITION, "RIGHT TURN LANE" R3-1100R 24 x 24 (600 x 600) AND M6-2R 21 x 15 (530 x 380) SHALL BE USED.
6. THESE CONTROLS SHALL SUPPLEMENT MAINLINE TRAFFIC CONTROL FOR LANE CLOSURES.
7. THE SIGNS SHALL BE MOUNTED ABOVE THE BARRICADES/DRUMS ON SEPARATE SIGN SUPPORTS THAT MEET NCHRP 350 OR MASH REQUIREMENTS.
8. TRAFFIC CONTROL AND PROTECTION AT TURN BAYS (TO REMAIN OPEN TO TRAFFIC) SHALL BE INCLUDED IN THE COST OF SPECIFIED TRAFFIC CONTROL STANDARDS OR ITEMS.



DETAIL A

All dimensions are in inches (millimeters) unless otherwise shown.

MODEL: Default
FILE: h:\mfc_p\pub\p1\room\dot\illinois\pwr\p1\dot\Documents\DOT_Offices\Illinois\DOT\Projects\146220\Cadd\Design\Design\DOT.dgn

| | | |
|------------------------------|----------------------------------|--------------------------------|
| USER NAME = somooi | DESIGNED - T. RAMMACHER 09-08-94 | REVISED - R. BORO 09-14-09 |
| | DRAWN - A. HOUSEH 11-07-95 | REVISED - A. SCHUETZE 07-01-13 |
| PLOT SCALE = 100,0000' / in. | CHECKED - A. HOUSEH 10-12-96 | REVISED - A. SCHUETZE 09-15-16 |
| PLOT DATE = 8/13/2020 | DATE - T. RAMMACHER 01-06-00 | REVISED - |

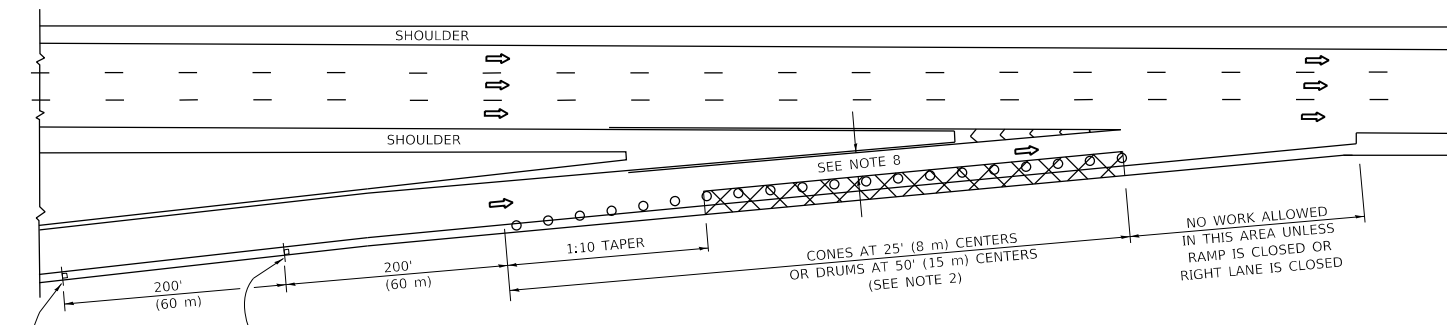
STATE OF ILLINOIS
DEPARTMENT OF TRANSPORTATION

TRAFFIC CONTROL AND PROTECTION AT TURN BAYS
(TO REMAIN OPEN TO TRAFFIC)

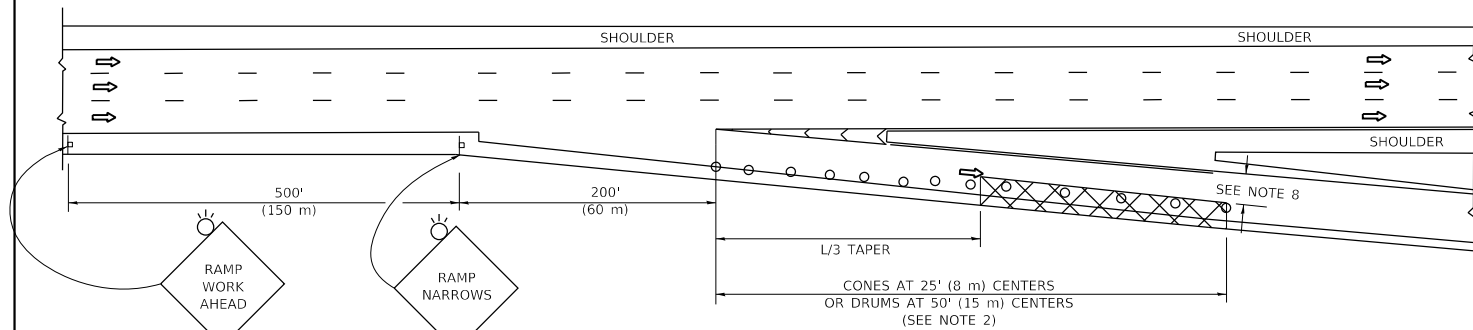
SCALE: NONE SHEET 1 OF 1 SHEETS STA. TO STA.

| F.A. RTE. | SECTION | COUNTY | TOTAL SHEETS | SHEET NO. |
|---------------------------|------------|--------------------|--------------|-----------|
| 341 | 2020-063-I | COOK | 28 | 23 |
| TC-14 | | CONTRACT NO. 62L41 | | |
| ILLINOIS FED. AID PROJECT | | | | |

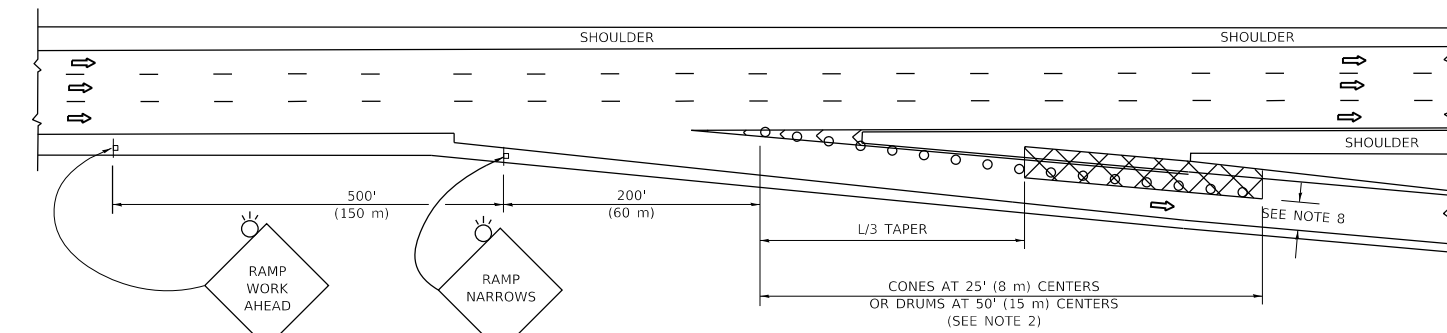
PARTIAL RAMP CLOSURE DETAILS



TYPICAL ENTRANCE RAMP



TYPICAL EXIT RAMP



TYPICAL EXIT RAMP

SYMBOLS

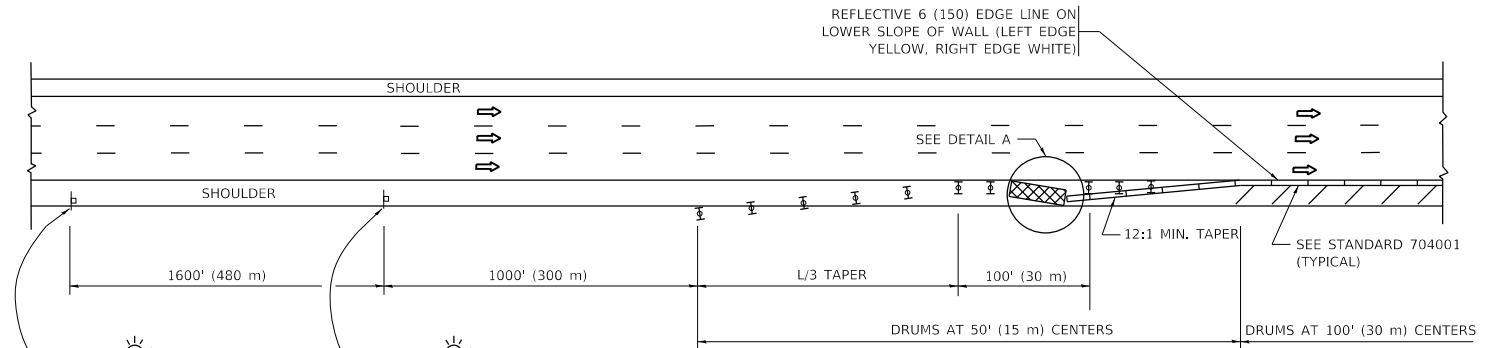
- ACTIVE WORK AREA
- SIGN ON PORTABLE OR PERMANENT SUPPORT
- FLAGGER WITH CONTROL SIGN
- TYPE II BARRICADE OR DRUM
- CONE, DRUM OR BARRICADE
- IMPACT ATTENUATOR OF TYPE AND TEST LEVEL SPECIFIED

GENERAL NOTES:

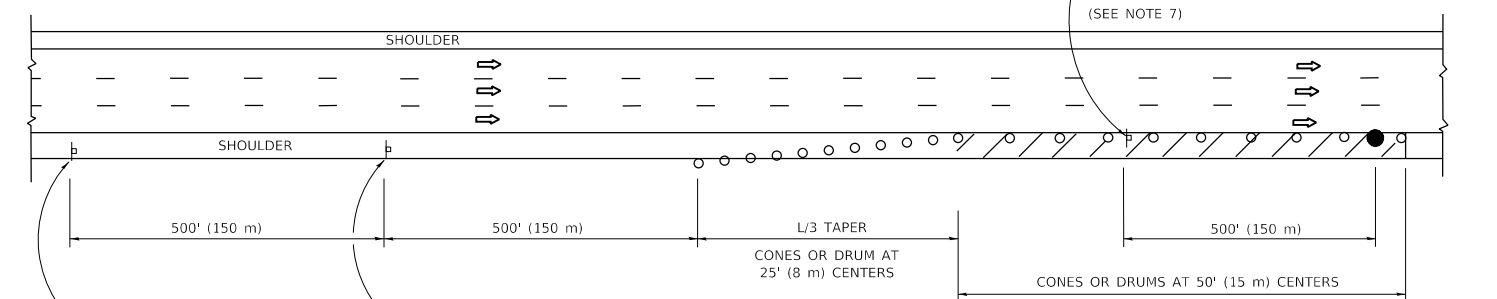
- THE "L" DISTANCE EQUALS:

| | |
|------------------|--|
| SPEED LIMIT | FORMULAS |
| 45 mph (80 km/h) | METRIC ENGLISH |
| OR GREATER: | $L=0.65(WXS)$ $L=(WXS)$ |
| | W = WIDTH OF OFFSET IN FEET (METERS) |
| | S = NORMAL POSTED SPEED MPH (KM/H) |
- TYPE II BARRICADES OR DRUMS ARE REQUIRED FOR ALL NIGHTTIME CLOSURES. TYPE II BARRICADES OR DRUMS WITH MONODIRECTIONAL STEADY BURN LIGHTS ARE REQUIRED FOR DELINEATING OBSTACLES, EXCAVATIONS, OR HAZARDS EXCEEDING 100 FT (30m) IN LENGTH AT NIGHT.
- ALL SIGNS SHALL BE POST MOUNTED IF THE CLOSURE TIME EXCEEDS FOUR DAYS.
- FLASHING LIGHTS SHALL BE USED DURING THE HOURS OF DARKNESS AND SHALL BE INSTALLED ABOVE THE FIRST TWO SETS OF SIGNS.

SHOULDER CLOSURE DETAILS



PERMANENT SHOULDER CLOSURE



DAYTIME SHOULDER CLOSURE

THIS DETAIL IS USED WHERE:
 1. VEHICLES, EQUIPMENT, WORKERS OR THEIR ACTIVITIES ENCR OACH IN AN AREA CLOSER THAN 15' (4.5 m) TO THE EDGE OF PAVEMENT FOR A PERIOD IN EXCESS OF 15 MINUTES.



DETAIL "A"
IMPACT ATTENUATOR, TEMPORARY
 (SEE NOTE 5)

- THE IMPACT ATTENUATOR, TEMPORARY IS NOT REQUIRED WHEN THE TEMPORARY CONCRETE BARRIER WALL IS PROTECTED BY OR IS TIED INTO THE EXISTING GUARDRAIL. IF OFFSET IS LESS THAN 5 FEET USE NARROW USE TYPE DEVICE TO MEET NCHRP350/MASH.
- AUTHORIZATION FROM THE DISTRICT'S BUREAU OF TRAFFIC IS REQUIRED FOR ALL FREEWAY CLOSURES.
- THE FLAGGER AND FLAGGER SIGN ARE REQUIRED AT THE ABOVE WORK SITES WHEN:
 - FOUR OR MORE WORK VEHICLES ENTER THE TRAFFIC LANES IN A ONE HOUR PERIOD.
 - THE WORK AVTTIVITY REQUIRES FREQUENT ENCR OACHMENT INTO THE LANE OPEN TO TRAFFIC.
 THE FLAGGER SHALL BE STATIONED APPROXIMATELY 100' (30 m) TO 200' (60 m) IN ADVANCE OF THE WORKERS.
- 12' MIN. WIDTH TANGENT SECTION
 16' MIN. WIDTH CURVE SECTION.

ALL DIMENSIONS ARE IN INCHES (MILLIMETERS) UNLESS OTHERWISE SHOWN.

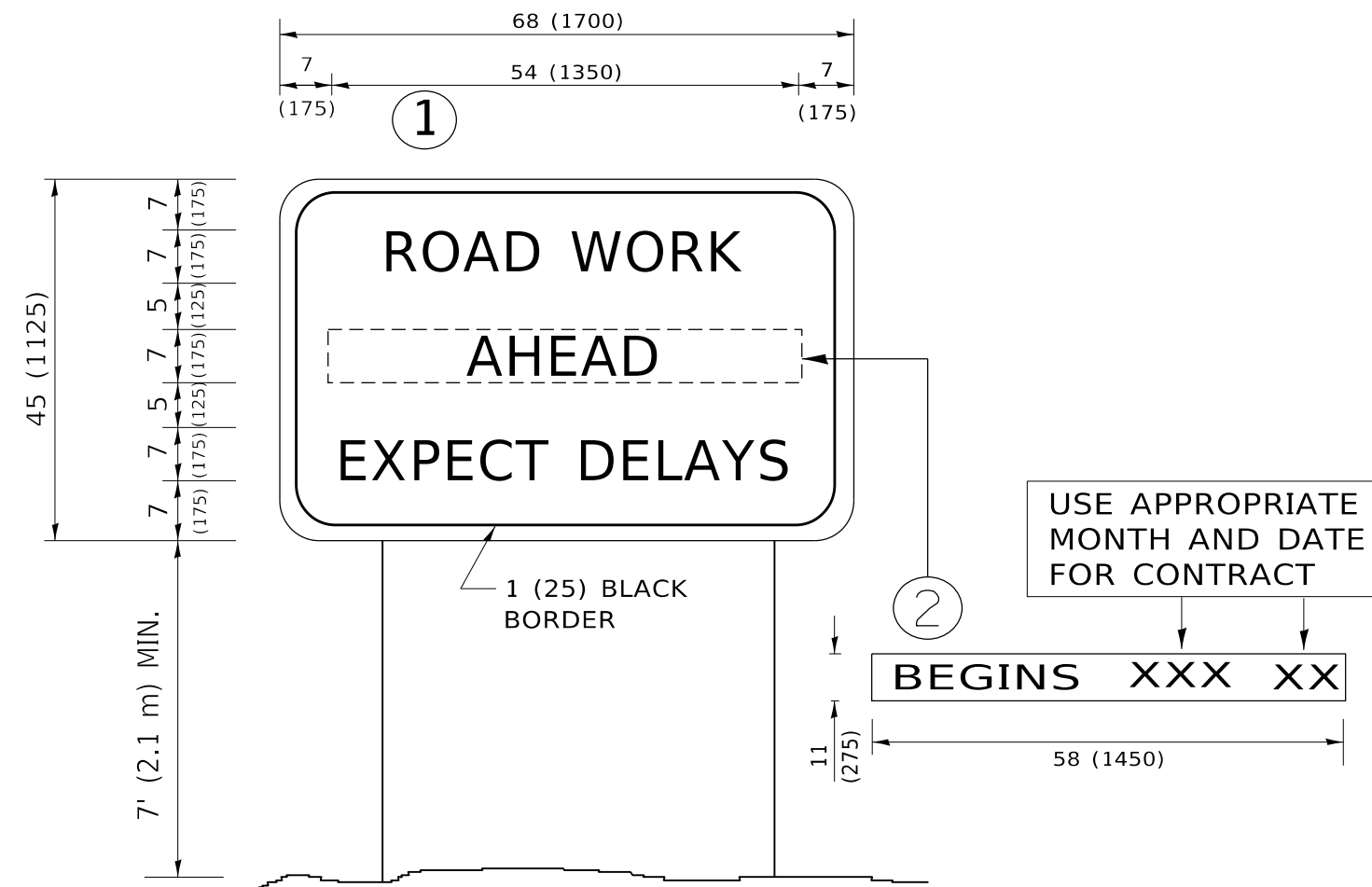
MODEL: Default
 FILE: \\nchrp\pub\pubroom\dat\illinois\gov\pww\DOT\Documents\DOT_Offices\Illinet\1\Projects\4146220\Cadd\Design\Design\DCS\4.dgn

| | | |
|------------------------------|----------------|------------------------|
| USER NAME = somool | DESIGNED - | REVISED - S.P.B. 01-07 |
| | DRAWN - D.W.S. | REVISED - S.P.B. 12-09 |
| PLOT SCALE = 100.0000' / in. | CHECKED - | REVISED - M.D. 06-13 |
| PLOT DATE = 8/13/2020 | DATE - 11-96 | REVISED - M.D. 01-18 |

STATE OF ILLINOIS
DEPARTMENT OF TRANSPORTATION

TRAFFIC CONTROL DETAILS FOR FREEWAY
SHOULDER CLOSURES AND PARTIAL RAMP CLOSURES
 SCALE: NONE SHEET 1 OF 1 SHEETS STA. TO STA.

| | | | | |
|---------------------------|------------|--------------------|--------------|-----------|
| F.A. RTE. | SECTION | COUNTY | TOTAL SHEETS | SHEET NO. |
| 341 | 2020-063-I | COOK | 28 | 24 |
| TC-17 | | CONTRACT NO. 62L41 | | |
| ILLINOIS FED. AID PROJECT | | | | |



NOTES:

1. USE BLACK LETTERING ON ORANGE BACKGROUND.
2. ERECT SIGNS IN ADVANCE OF THE LOCATION FOR THE "ROAD CONSTRUCTION AHEAD" SIGN AT LOCATIONS AS DIRECTED BY THE ENGINEER.
3. ERECT SIGN ① WITH INSTALLED PANEL ② ONE WEEK PRIOR TO THE START OF CONSTRUCTION.
4. REMOVE PANEL ② SOON AFTER THE START OF CONSTRUCTION.
5. SEE SPECIAL PROVISION FOR "TEMPORARY INFORMATION SIGNING" FOR ADDITIONAL INFORMATION.
6. ONE SIGN ASSEMBLY EQUALS 25.70 SQ. FT. (2.3 SQ. M.)
7. SHALL BE PAID FOR AS TEMPORARY INFORMATION SIGNING.

ALL DIMENSIONS ARE IN INCHES (MILLIMETERS) UNLESS OTHERWISE SHOWN.

MODEL: Default
 FILE: \\nashville-prod\planroom\dm\illinois.gov\PWIDOT\Documents\DOT_Offices\Dir\ctc_1\Projects\146220\CADD\Drawings\Design\DRS45.dgn

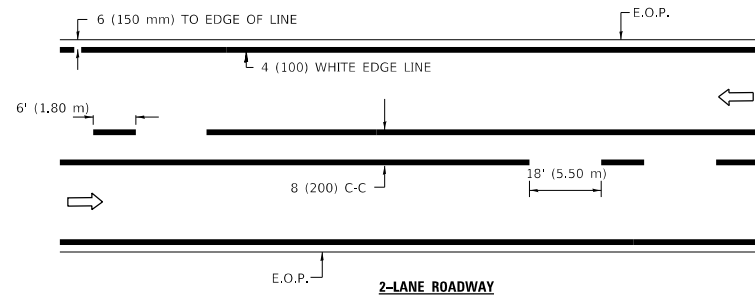
| | | |
|-------------------------------|------------|---------------------------------|
| USER NAME = somool | DESIGNED - | REVISED - R. MIRS 09-15-97 |
| | DRAWN - | REVISED - R. MIRS 12-11-97 |
| PLOT SCALE = 100.0000 ' / in. | CHECKED - | REVISED - T. RAMMACHER 02-02-99 |
| PLOT DATE = 8/13/2020 | DATE - | REVISED - C. JUCIUS 01-31-07 |

**STATE OF ILLINOIS
DEPARTMENT OF TRANSPORTATION**

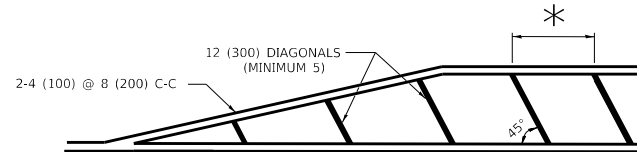
**ARTERIAL ROAD
INFORMATION SIGN**

SCALE: NONE SHEET 1 OF 1 SHEETS STA. TO STA.

| F.A. RTE. | SECTION | COUNTY | TOTAL SHEETS | SHEET NO. |
|---------------------------|------------|--------------------|--------------|-----------|
| 341 | 2020-063-I | COOK | 28 | 25 |
| TC-22 | | CONTRACT NO. 62L41 | | |
| ILLINOIS FED. AID PROJECT | | | | |



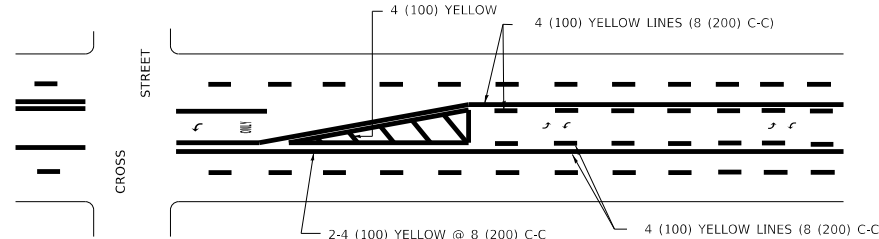
2-LANE ROADWAY



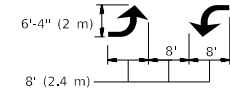
* FOR MEDIAN LENGTHS WHERE DIAGONAL SPACING CANNOT BE ATTAINED, USE 5 (FIVE) EQUALLY SPACED DIAGONAL LINES.

* DIAGONAL LINE SPACING: 20' (6.1 m) C-C

PAINTED MEDIANS

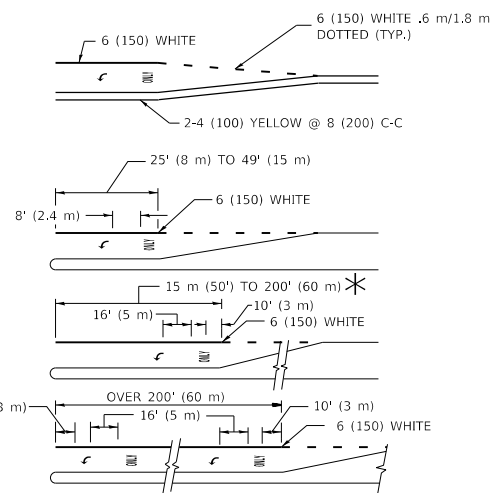


A MINIMUM OF TWO PAIRS OF TURN ARROWS SHALL BE USED, WHITE IN COLOR. ADDITIONAL PAIRS SHALL BE PLACED AT 200' (60 m) TO 300' (90 m) INTERVALS.



MEDIAN WITH TWO-WAY LEFT TURN LANE

TYPICAL PAINTED MEDIAN MARKING

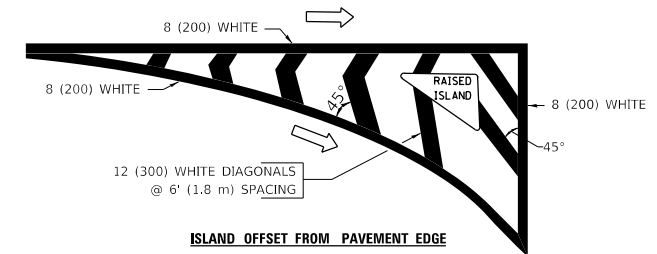


FULL SIZE LETTERS 8' (2.4 m) AND ARROWS SHALL BE USED.
 AREA = 15.8 SQ. FT. (1.47 m²) ONLY AREA = 22.9 SQ. FT. (2.13 m²)

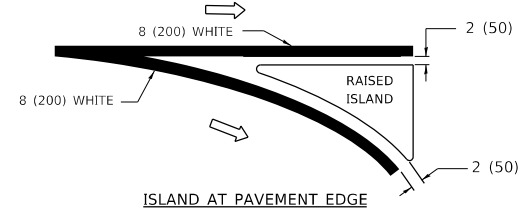
* TURN LANES IN EXCESS OF 400' (120 m) IN LENGTH MAY HAVE AN ADDITIONAL SET OF ARROW - *ONLY* INSTALLED MIDWAY BETWEEN THE OTHER TWO SETS OF ARROW - *ONLY*.

TYPICAL LEFT (OR RIGHT) TURN LANE

TYPICAL TURN LANE MARKING



ISLAND OFFSET FROM PAVEMENT EDGE



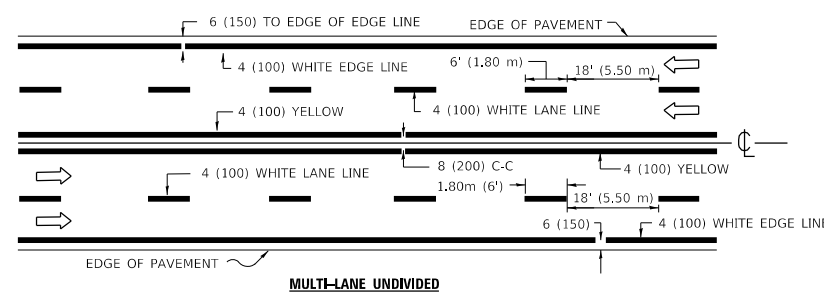
ISLAND AT PAVEMENT EDGE

TYPICAL ISLAND MARKING

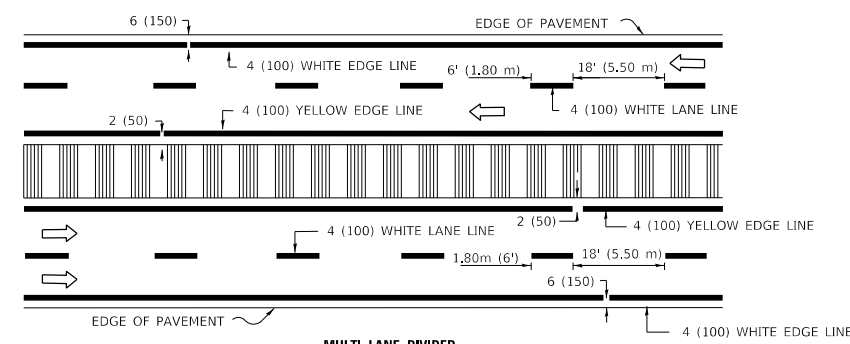
| TYPE OF MARKING | WIDTH OF LINE | PATTERN | COLOR | SPACING / REMARKS |
|--|--|---------------------------------|---|--|
| CENTERLINE ON 2 LANE PAVEMENT | 4 (100) | SKIP-DASH | YELLOW | 6' (1.80 m) LINE WITH 18' (5.50 m) SPACE |
| CENTERLINE ON MULTI-LANE UNDIVIDED PAVEMENT | 2 @ 4 (100) | SOLID | YELLOW | 8 (200) C-C |
| NO PASSING ZONE LINES: FOR ONE DIRECTION FOR BOTH DIRECTIONS | 4 (100) 2 @ 4 (100) | SOLID SOLID | YELLOW YELLOW | 8 (200) C-C |
| LANE LINES | 4 (100) 5 (125) ON FREEWAYS | SKIP-DASH SKIP-DASH | WHITE WHITE | 6' (1.80 m) LINE WITH 18' (5.50 m) SPACE |
| DOTTED LINES (EXTENSIONS OF CENTER, LANE OR TURN LANE MARKINGS) | SAME AS LINE BEING EXTENDED | SKIP-DASH | SAME AS LINE BEING EXTENDED | 2' (600) LINE WITH 6' (1.8) SPACE |
| EDGE LINES | 4 (100) | SOLID | YELLOW-LEFT WHITE-RIGHT | OUTLINE MOUNTABLE MEDIANS IN YELLOW; EDGE LINES ARE NOT USED NEXT TO BARRIER CURB |
| TURN LANE MARKINGS | 6 (150) LINE; FULL SIZE LETTERS & SYMBOLS (8' (2.4 m)) | SOLID | WHITE | SEE TYPICAL TURN LANE MARKING DETAIL |
| TWO WAY LEFT TURN MARKING | 2 @ 4 (100) EACH DIRECTION 8' (2.4 m) LEFT ARROW | SKIP-DASH AND SOLID IN PAIRS | YELLOW WHITE | 6' (1.8 m) LINE WITH 18' (5.50 m) SPACE FOR SKIP-DASH; 8 (200) C-C BETWEEN SOLID LINE AND SKIP-DASH LINE SEE TYPICAL TWO-WAY LEFT TURN MARKING DETAIL |
| CROSSWALK LINES A. DIAGONAL (BIKE & EQUESTRIAN) B. LONGITUDINAL BARS (SCHOOL & PEDESTRIAN) | 12 (300) @ 45° 24 (600) @ 90° | SOLID SOLID | WHITE WHITE | 2' (600) APART 2' (600) APART SEE TYPICAL CROSSWALK MARKING DETAILS. |
| STOP LINES | 24 (600) | SOLID | WHITE | PLACE 4' (1.2 m) IN ADVANCE OF AND PARALLEL TO CROSSWALK, IF PRESENT. OTHERWISE, PLACE AT DESIRED STOPPING POINT. PARALLEL TO CROSSROAD CENTERLINE, WHERE POSSIBLE |
| PAINTED MEDIANS | 2 @ 4 (100) WITH 12 (300) DIAGONALS @ 45° | SOLID | YELLOW: TWO WAY TRAFFIC WHITE: ONE WAY TRAFFIC | 8 (200) C-C FOR THE DOUBLE LINE SEE TYPICAL PAINTED MEDIAN MARKING. |
| GORE MARKING AND CHANNELIZING LINES | 8 (200) WITH 12 (300) DIAGONALS @ 45° | SOLID | WHITE | DIAGONALS: 20' (6.1 m) (LESS THAN 30 MPH (50 km/h)) |
| RAILROAD CROSSING | 24 (600) TRANSVERSE LINES; "RR" IS 6' (1.8 m) LETTERS; 16 (400) LINE FOR "X" | SOLID | WHITE | SEE STATE STANDARD 780001 AREA OF: "R"=3.6 SQ. FT. (0.33m ²) EACH "X"=54.0 SQ. FT. (5.0 m ²) |

FOR FURTHER DETAILS ON PAVEMENT MARKING REFER TO STREET MARKING STANDARDS, PRINTED BY CITY OF CHICAGO, DEPARTMENT OF TRANSPORTATION, BUREAU OF TRAFFIC.

ALL DIMENSIONS ARE IN INCHES (MILLIMETERS) UNLESS OTHERWISE SHOWN.



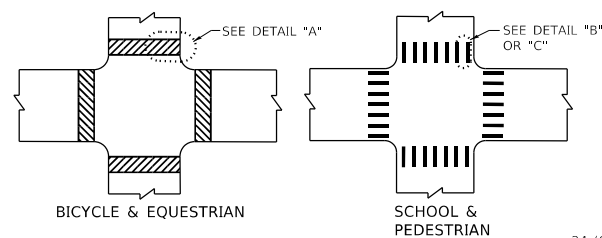
MULTI-LANE UNDIVIDED



MULTI-LANE DIVIDED WITH MOUNTABLE MEDIAN

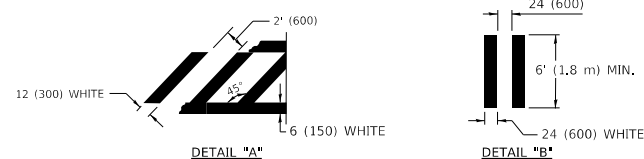
NOTE: MEDIANS WITH BARRIER CURB DO NOT REQUIRE AN EDGE LINE

TYPICAL LANE AND EDGE LINE MARKING

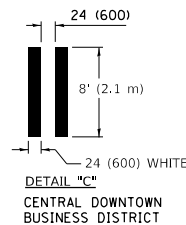


BICYCLE & EQUESTRIAN

SCHOOL & PEDESTRIAN



TYPICAL CROSSWALK MARKING



DETAIL "C" CENTRAL DOWNTOWN BUSINESS DISTRICT

MODEL: Default
 FILE: \\nls-01\pub\lansroom\dot\illinois\dot\Documents\DOT_Offices\lans\dot\Projects\146220\Cadd\lans\Design\DOT\DOT.dgn

| | | |
|-------------------------------|------------|---------------------------------|
| USER NAME = somool | DESIGNED - | REVISED - T. RAMMACHER 12-07-00 |
| | DRAWN - | REVISED - K. ENG 02-28-12 |
| PLOT SCALE = 100,0000 ' / in. | CHECKED - | REVISED - |
| PLOT DATE = 8/13/2020 | DATE - | REVISED - |

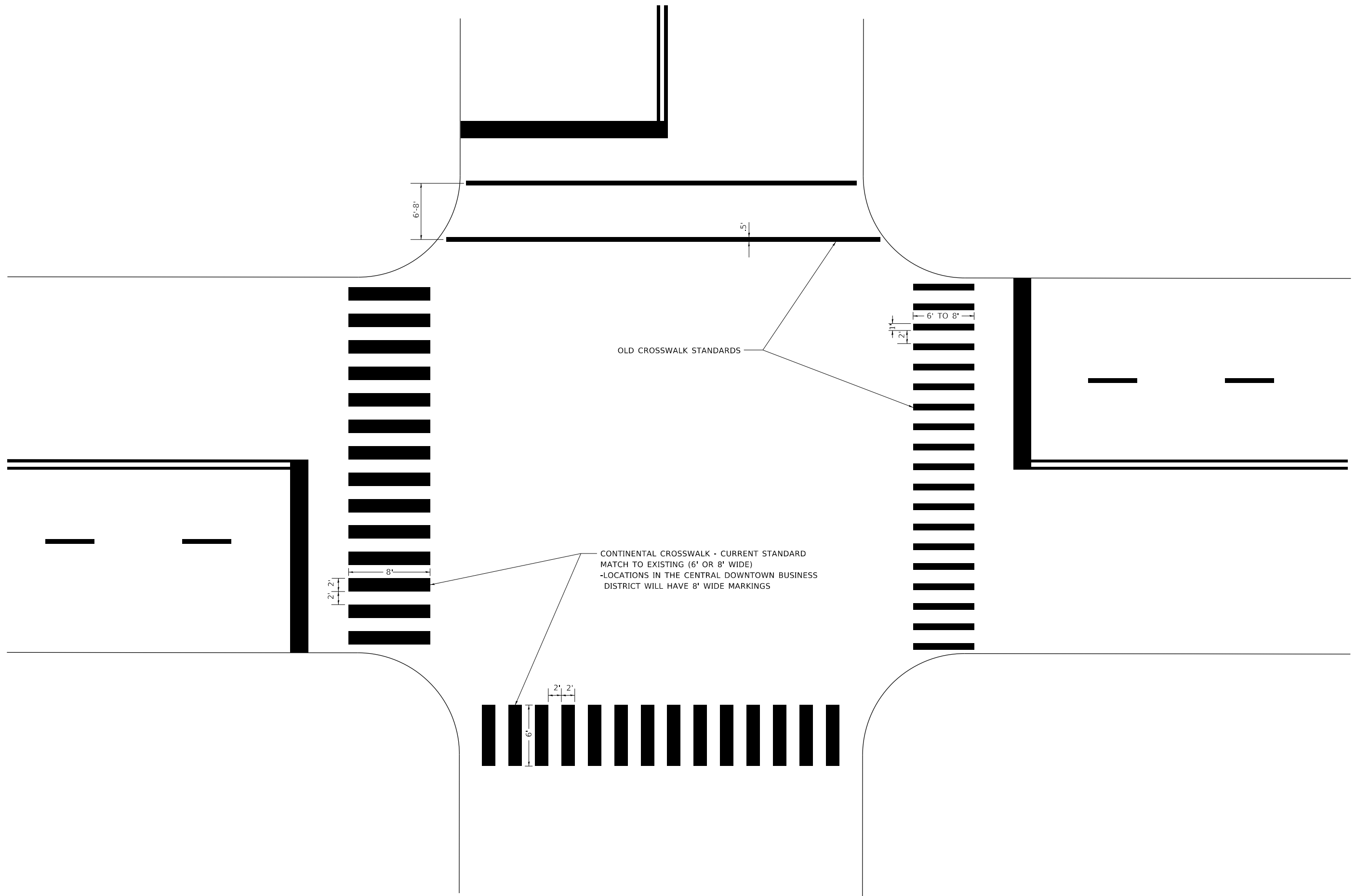
**STATE OF ILLINOIS
 DEPARTMENT OF TRANSPORTATION**

**CITY OF CHICAGO
 TYPICAL PAVEMENT MARKINGS**

SCALE: NONE SHEET 1 OF 3 SHEETS STA. TO STA.

| | | | | |
|-----------|------------|--------------------|--------------|-----------|
| F.A. RTE. | SECTION | COUNTY | TOTAL SHEETS | SHEET NO. |
| 341 | 2020-063-I | COOK | 28 | 26 |
| TC-24 | | CONTRACT NO. 62L41 | | |
| ILLINOIS | | FED. AID PROJECT | | |

MODEL: Default
 FILE: Model: 341\planroom.dwg\Illinois.gov\PWIDOT\Documents\DOT_Offices\District_1\Projects\146220\CADD\Drawings\Design\DES4.dwg



| | | |
|------------------------------|------------|---------------------------------|
| USER NAME = somool | DESIGNED - | REVISED - T. RAMMACHER 12-07-00 |
| | DRAWN - | REVISED - |
| PLOT SCALE = 100.0000' / in. | CHECKED - | REVISED - |
| PLOT DATE = 8/13/2020 | DATE - | REVISED - |

**STATE OF ILLINOIS
 DEPARTMENT OF TRANSPORTATION**

**CITY OF CHICAGO
 TYPICAL PAVEMENT MARKINGS**

SCALE: NONE SHEET 3 OF 3 SHEETS STA. TO STA.

| F.A. RTE. | SECTION | COUNTY | TOTAL SHEETS | SHEET NO. |
|---------------------------|------------|--------------------|--------------|-----------|
| 341 | 2020-063-I | COOK | 28 | 28 |
| TC-24 | | CONTRACT NO. 62L41 | | |
| ILLINOIS FED. AID PROJECT | | | | |