

STATE OF ILLINOIS  
DEPARTMENT OF TRANSPORTATION

F.A. RTE.	SECTION	COUNTY	TOTAL SHEETS	SHEET NO.
VAR.	D4 ITS REPLACE 2021-1	PEORIA TAZEWELL	6	1
		ILLINOIS	CONTRACT NO. 68G05	

D-94-007-21

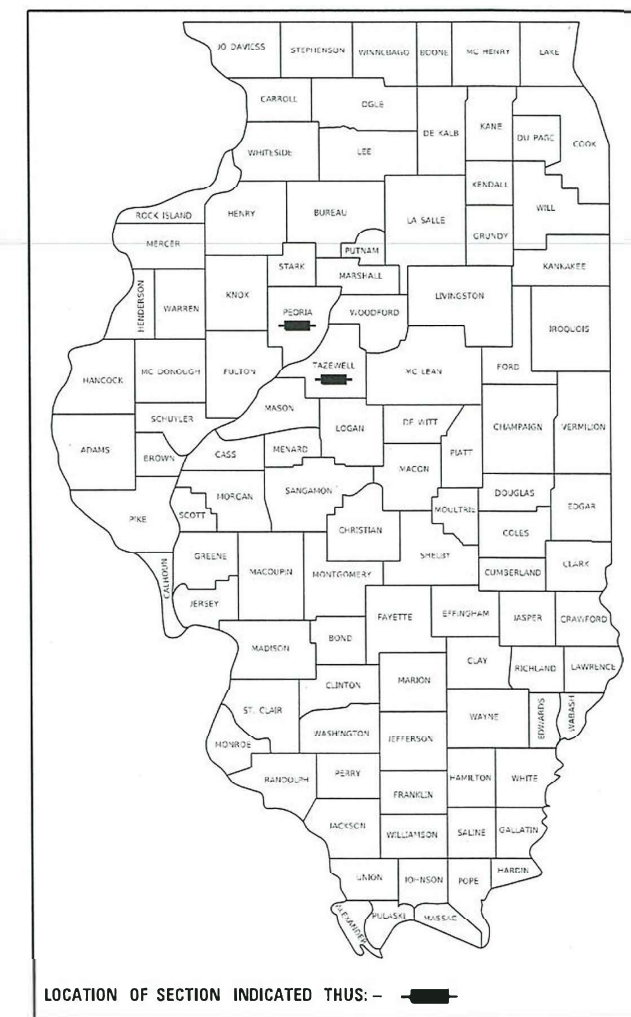
INDEX OF SHEETS:  
SEE SHEET 2 FOR INDEX OF SHEETS

PROPOSED  
HIGHWAY PLANS

VARIOUS ROUTES  
D4 ITS REPLACE 2021-1  
PEORIA-TAZEWELL COUNTIES

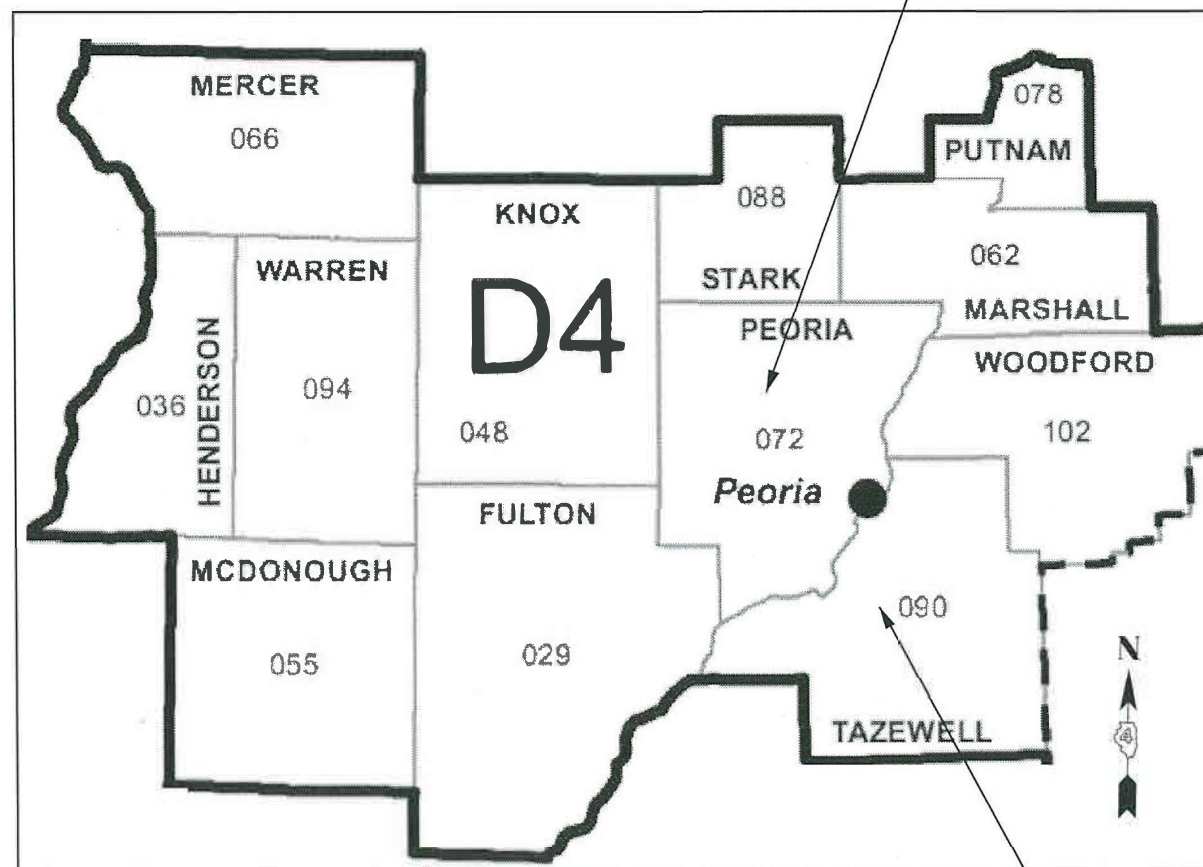
C-94-008-21

PEORIA COUNTY  
(CITY OF PEORIA)  
(17 LOCATIONS)



HIGHWAY STANDARDS:  
SEE SHEET 2 FOR A LIST OF  
APPLICABLE HIGHWAY STANDARDS

PROJECT DESCRIPTION:  
REPLACEMENT OF EXISTING VIDEO  
DETECTION SYSTEMS AT VARIOUS  
LOCATIONS IN DISTRICT FOUR.



TAZEWELL COUNTY  
(CITY OF EAST PEORIA)  
(1 LOCATION)

J.U.L.I.E.  
JOINT UTILITY LOCATION INFORMATION FOR EXCAVATORS  
1-800-892-0123  
OR 811

PROJECT ENGINEER : ERIC HOWALD (309) 671-4481  
PROJECT MANAGER : BEN TELLEFSON (309) 671-4477  
CATALOG NO. 036120-00D  
CONTRACT NO. 68G05

STATE OF ILLINOIS  
DEPARTMENT OF TRANSPORTATION

SUBMITTED Aug 21 2020  
Rensal A Garnett KSP  
REGIONAL ENGINEER

October 2, 2020  
Scott A. Elk  
ENGINEER OF DESIGN AND ENVIRONMENT

October 2, 2020  
James J. [Signature]  
DIRECTOR OF HIGHWAYS PROJECT IMPLEMENTATION 13

PRINTED BY THE AUTHORITY  
OF THE STATE OF ILLINOIS

NO COMMITMENTS HAVE BEEN MADE IN CONJUNCTION WITH THIS PROJECT.

INDEX OF SHEETS	
SHEET	DESCRIPTION
1	COVER SHEET
2	COMMITMENTS, INDEX OF SHEETS, HIGHWAY STANDARDS
3	CONSTRUCTION NOTES
4	SUMMARY OF QUANTITIES
5	SCHEDULE OF QUANTITIES
6	PROPOSED TRAFFIC SIGNAL CONTROLLER CABINET DETAILS

HIGHWAY STANDARDS	
000001-07	STANDARD SYMBOLS, ABBREVIATIONS AND PATTERNS
001006	DECIMAL OF AN INCH & FOOT
701001-02	OFF-ROAD OPERATIONS, 2L, 2W, MORE THAN 15' AWAY
701006-05	OFF-ROAD OPERATIONS, 2L, 2W, 15' TO 24" FROM PAVEMENT EDGE
701101-05	OFF-ROAD OPERATIONS, MULTILANE, 15' TO 24" FROM PAVEMENT EDGE
701106-02	OFF-ROAD OPERATIONS, MULTILANE, MORE THAN 15' AWAY
701426-09	LANE CLOSURE, MULTILANE, INTERMITTENT OR MOVING OPERATION, FOR SPEEDS $\geq$ 45 MPH
701427-05	LANE CLOSURE, MULTILANE, INTERMITTENT OR MOVING OPERATION, FOR SPEEDS $\leq$ 40 MPH
701701-10	URBAN LANE CLOSURE, MULTILANE INTERSECTION
701901-08	TRAFFIC CONTROL DEVICES
857001-01	STANDARD PHASE DESIGNATION DIAGRAMS AND PHASE SEQUENCES

MODEL: Default  
 FILE: \\nas101.ccs.commonwealth.net\transfer\...\_bureau\68G05 - Final Plans\68G05 - Video Detector Replacement Project (final 8-20-20).dgn

USER NAME = HOWALDER	DESIGNED -	REVISED -
	DRAWN -	REVISED -
PLOT SCALE = 42.9315 ' / in.	CHECKED -	REVISED -
PLOT DATE = 8/21/2020	DATE -	REVISED -

STATE OF ILLINOIS  
 DEPARTMENT OF TRANSPORTATION

COMMITMENTS, INDEX OF SHEETS, HIGHWAY STANDARDS,  
 AND CONSTRUCTION NOTES

SCALE: SHEET OF SHEETS STA. TO STA.

F.A. RTE.	SECTION	COUNTY	TOTAL SHEETS	SHEET NO.
VAR.	D4 ITS REPLACE 2021-1	PEORIA TAEWELL	6	2
			CONTRACT NO. 68G05	
			ILLINOIS FED. AID PROJECT	

**CONSTRUCTION NOTES**

1. EXISTING UTILITY LOCATION INFORMATION IS NOT SHOWN ON THE PLAN SHEETS. THE CONTRACTOR SHALL FIELD VERIFY THE LOCATION OF ALL UTILITIES AND PRIVATELY OWNED FACILITIES PRIOR TO THE INSTALLATION OF ANY COMPONENTS. THE CONTRACTOR SHALL VERIFY EXISTING FIELD CONDITIONS AND TERRAIN PRIOR TO COMMENCING WORK ON THE PROJECT.
2. THE LOCATION OF ALL UTILITIES AND PRIVATELY OWNED FACILITIES SHALL BE FIELD VERIFIED BY THE CONTRACTOR PRIOR TO THE INSTALLATION OF ANY COMPONENTS.
3. THE CONTRACTOR SHALL BE RESPONSIBLE FOR LOCATING EXISTING IDOT ELECTRICAL FACILITIES AT HIS/HER OWN EXPENSE IF REQUIRED. THE CONTRACTOR SHALL ALSO BE LIABLE FOR ANY DAMAGE TO IDOT FACILITIES RESULTING FROM INACCURATE LOCATING.
4. ELECTRICAL WORK SHALL CONFORM WITH NATIONAL, STATE, AND LOCAL CODES.
5. THE CONTRACTOR SHALL PROVIDE ELECTRICAL CABLE SLACK IN ACCORDANCE WITH ARTICLE 873.03.
6. ALL SURPLUS MATERIALS SHALL BE DISPOSED OF IN ACCORDANCE WITH ARTICLE 202.03 OF THE STANDARD SPECIFICATIONS.
7. THE CONTRACTOR SHALL VERIFY FIELD CONDITIONS PRIOR TO BIDDING. THERE WILL BE NO ADDITIONAL COMPENSATION PAID FOR CLAIMS THAT ARISE FROM A FAILURE TO FULLY INVESTIGATE EXISTING FIELD CONDITIONS.
8. ANY MAINTENANCE OF EXISTING ELECTRICAL FACILITIES WILL BE CONSIDERED EXTRA WORK IN ACCORDANCE WITH ARTICLE 109.04 OF THE STANDARD SPECIFICATIONS.
9. ELECTRICAL CABLE WILL BE MEASURED FOR PAYMENT IN ACCORDANCE WITH ARTICLE 873.04.
10. VIDEO DETECTION CAMERAS SHALL BE INSTALLED AT A MINIMUM MOUNTING HEIGHT OF 45 FT AND A MAXIMUM MOUNTING HEIGHT OF 47 FT.
11. THE EXISTING VIDEO DETECTION SYSTEMS SHALL REMAIN IN OPERATION UNTIL THE PROPOSED SYSTEMS ARE INSTALLED AND OPERATIONAL.
12. THE CONTRACTOR SHALL REMOVE THE EXISTING VIDEO DETECTION CAMERAS AND CAMERA BRACKETS THAT ARE LOCATED ON THE SAME MAST ARM THAT THE PROPOSED VIDEO DETECTION CAMERA WILL BE INSTALLED ON AND DELIVER THEM TO THE CITY OF PEORIA MAINTENANCE FACILITY LOCATED AT 3505 N. DRIES LANE, PEORIA. THE CONTRACTOR SHALL NOTIFY IRV LEBLANC, PEORIA TRAFFIC LEAD ELECTRICIAN, AT (309) 303-7440 A MINIMUM OF FORTY EIGHT HOURS PRIOR TO DELIVERY. ALL OTHER CAMERAS WILL REMAIN IN PLACE. THE COST OF THIS WORK SHALL BE INCLUDED IN THE COST OF THE PROPOSED VIDEO DETECTION SYSTEMS.
13. THE DEPARTMENT WILL PROGRAM ALL VIDEO DETECTION SYSTEMS AFTER INSTALLATION.
14. THE CONTRACTOR SHALL FURNISH AND INSTALL NEW CAT 5 ETHERNET CABLE TO THE PROPOSED VIDEO DETECTION CAMERAS. THE COST OF THIS WORK SHALL BE INCLUDED IN THE COST OF THE PROPOSED VIDEO DETECTION SYSTEM.
15. THE CONTRACTOR SHALL INSTALL THE PROPOSED VIDEO DETECTION CAMERA BRACKET ON THE STRAIN POLE OF THE MAST ARM AS SPECIFIED ON THE PLAN SHEETS. THE CAMERA BRACKET SHALL BE SECURED TO THE STAIN POLE AT TWO POINTS BY USING AN ALUMINUM BRACKET WITH STAINLESS STEEL BANDING. THE CONTRACTOR SHALL INSTALL SET SCREWS AND ADDITIONAL HARDWARE AS NEEDED TO ENSURE THAT THE CAMERA AND CAMERA BRACKET DOES NOT LOOSEN. THE COST OF THIS WORK SHALL BE INCLUDED IN THE COST OF THE PROPOSED VIDEO DETECTION SYSTEM.
16. THE CONTRACTOR SHALL FURNISH AND INSTALL ONE GRIDSMART GS-3 CAMERA AT THE THE INTERSECTION OF IL 116 (MAIN ST.) & IL 8 (CAMP ST.) IN EAST PEORIA TO PROVIDE DETECTION FOR SB IL 116 TRAFFIC. THE CAMERA SHALL BE INSTALL ON THE LUMINAIRE MAST ARM FOR NB IL 116. THE COST OF THIS WORK SHALL BE INCLUDED IN THE COST OF THE PROPOSED VIDEO DETECTION SYSTEM.

MODEL: Default  
FILE: \\nas101.ccs.commons.GEN\Transfer - Bureau\68G05 - Final Plans\68G05 - Video Detection Reelbackement Project (final 8-20-20).dgn

USER NAME = HOWALDER	DESIGNED -	REVISED -
	DRAWN -	REVISED -
PLOT SCALE = 42.9315 ' / in.	CHECKED -	REVISED -
PLOT DATE = 8/21/2020	DATE -	REVISED -

**STATE OF ILLINOIS  
DEPARTMENT OF TRANSPORTATION**

**CONSTRUCTION NOTES**

SCALE: SHEET OF SHEETS STA. TO STA.

F.A. RTE.	SECTION	COUNTY	TOTAL SHEETS	SHEET NO.
VAR.	D4 ITS REPLACE 2021-1	PEORIA TAEWELL	6	3
			CONTRACT NO. 68G05	
			ILLINOIS FED. AID PROJECT	

**SUMMARY OF QUANTITIES**

PAY ITEM	ITEM DESCRIPTION	UNIT	TOTAL QTY.	PEORIA COUNTY					TAZEWELL COUNTY
				CONST. TYPE CODE 0021 VARIOUS ROUTES 100% STATE 0% CITY CITY OF PEORIA URBAN	CONST. TYPE CODE 0021 VARIOUS ROUTES 95% STATE 5% CITY CITY OF PEORIA URBAN	CONST. TYPE CODE 0021 VARIOUS ROUTES 93.3% STATE 6.7% CITY CITY OF PEORIA URBAN	CONST. TYPE CODE 0021 VARIOUS ROUTES 90% STATE 10% CITY CITY OF PEORIA URBAN	CONST. TYPE CODE 0021 VARIOUS ROUTES 80% STATE 20% CITY CITY OF PEORIA URBAN	CONST. TYPE CODE 0021 VARIOUS ROUTES 100% STATE 0% CITY CITY OF EAST PEORIA URBAN
67100100	MOBILIZATION	L SUM	1.0	0.25	0.05	0.15	0.20	0.30	0.05
86300400	CONTROLLER CABINET TYPE IV	EACH	2.0				1.0	1.0	
X0322281	WIDE AREA VIDEO DETECTION SYSTEM COMPLETE	EACH	18.0	3.0	1.0	3.0	5.0	5.0	1.0
X7010216	TRAFFIC CONTROL AND PROTECTION, (SPECIAL)	L SUM	1.0	0.25	0.05	0.15	0.20	0.30	0.05

MODEL: Default  
 FILE: \\nas101.ccs.common.genttransfer - bureau\68G05 - Final Plans\68G05 - Video Detection Replacement Project - final 8-20-20.dgn

USER NAME = HOWALDER	DESIGNED -	REVISED -
	DRAWN -	REVISED -
PLOT SCALE = 42.9315 ' / in.	CHECKED -	REVISED -
PLOT DATE = 8/21/2020	DATE -	REVISED -

**STATE OF ILLINOIS  
DEPARTMENT OF TRANSPORTATION**

**SUMMARY OF QUANTITIES**

SCALE:      SHEET      OF      SHEETS      STA.      TO STA.

F.A. RTE.	SECTION	COUNTY	TOTAL SHEETS	SHEET NO.
VAR.	D4 ITS REPLACE 2021-1	PEORIA TAZEWELL	6	4
CONTRACT NO. 68G05			ILLINOIS FED. AID PROJECT	

MODEL: Default  
 FILE: \\nas01.ccs.commons.genttransfer... buraua68G05 - Final Plans68G05 - Video Detection Reelbackment Project (final 8-20-20).dgn

COUNTY	CITY	FUND CODE (IDOT %/CITY %)	LOCATION	W A VID DET SYS COM (EACH)	CONT CAB TYPE IV (EACH)	NOTES
PEORIA	PEORIA	100/0	IL 40 (KNOXVILLE AVE.) & PENNSYLVANIA	1.0		INSTALL PROPOSED VIDEO DETECTION BELL CAMERA ON STRAIN POLE OF MAST ARM FOR WB I-74 (ESTIMATED CAT 5 CABLE LENGTH = 96 FT.)
	PEORIA	100/0	US 150 (WAR MEMORIAL DR.) & IL 6 NB RAMPS	1.0		INSTALL PROPOSED VIDEO DETECTION BELL CAMERA ON LIGHT POLE LOCATED IN ISLAND LOCATED NEAREST TO CONTROLLER CABINET (ESTIMATED CAT 5 CABLE LENGTH = 142 FT.)
	PEORIA	100/0	US 150 (WAR MEMORIAL DR.) & IL 6 SB RAMPS	1.0		INSTALL PROPOSED VIDEO DETECTION BELL CAMERA ON STRAIN POLE OF MAST ARM FOR WB US 150 (WAR MEMORIAL DR.) (ESTIMATED CAT 5 CABLE LENGTH = 128 FT.)
	PEORIA	90/10	IL 40 (KNOXVILLE AVE.) & ALTA	1.0		INSTALL PROPOSED VIDEO DETECTION BELL CAMERA ON STRAIN POLE OF MAST ARM FOR SB IL 40 (KNOXVILLE AVE.) (ESTIMATED CAT 5 CABLE LENGTH = 99 FT.)
	PEORIA	90/10	IL 40 (KNOXVILLE AVE.) & BETHANY WAY	1.0		INSTALL PROPOSED VIDEO DETECTION BELL CAMERA ON STRAIN POLE OF MAST ARM FOR WB COUNTRY MEADOWS (ESTIMATED CAT 5 CABLE LENGTH = 102 FT.)
	PEORIA	90/10	IL 91 & AMERICAN PRAIRIE	1.0		INSTALL PROPOSED VIDEO DETECTION BELL CAMERA ON STRAIN POLE OF MAST ARM FOR SB IL 91 (ESTIMATED CABLE LENGTH = 83 FT.)
	PEORIA	90/10	US 150 (WAR MEMORIAL DR.) & BIG HOLLOW/WILLOW KNOLLS	1.0	1.0	INSTALL PROPOSED VIDEO DETECTION BELL CAMERA ON STRAIN POLE OF MAST ARM FOR EB US 150 (WAR MEMORIAL DR.) (ESTIMATED CAT 5 CABLE LENGTH = 136 FT.)
	PEORIA	90/10	US 150 (WAR MEMORIAL DR.) & ORANGE PRAIRIE	1.0		INSTALL PROPOSED VIDEO DETECTION BELL CAMERA ON STRAIN POLE OF MAST ARM FOR NB ORANGE PRAIRIE (ESTIMATED CAT 5 CABLE LENGTH = 158 FT.)
	PEORIA	93.3/6.7	IL 40 (KNOXVILLE AVE.) & PROSPECT	1.0		INSTALL PROPOSED VIDEO DETECTION BELL CAMERA ON STRAIN POLE OF MAST ARM FOR SB IL 40 (KNOXVILLE AVE.) (ESTIMATED CABLE LENGTH = 261 FT.)
	PEORIA	93.3/6.7	US 150 (WAR MEMORIAL DR.) & FROSTWOOD	1.0		INSTALL PROPOSED VIDEO DETECTION BELL CAMERA ON STRAIN POLE OF MAST ARM FOR EB US 150 (WAR MEMORIAL DR.) (ESTIMATED CAT 5 CABLE LENGTH = 81 FT.)
	PEORIA	93.3/6.7	US 150 (WAR MEMORIAL DR.) & GRAND PRAIRIE	1.0		INSTALL PROPOSED VIDEO DETECTION BELL CAMERA ON STRAIN POLE OF MAST ARM FOR WB US 150 (WAR MEMORIAL DR.) (ESTIMATED CAT 5 CABLE LENGTH = 112 FT.)
	PEORIA	95/5	US 150 (WAR MEMORIAL DR.) & IL 91/SUMMERSHADE CIRCLE	1.0		INSTALL PROPOSED VIDEO DETECTION BELL CAMERA ON STRAIN POLE OF MAST ARM FOR WB US 150 (WAR MEMORIAL DR.) (ESTIMATED CAT 5 CABLE LENGTH = 140 FT.)
	PEORIA	80/20	IL 40 (KNOXVILLE AVE.) & ELAINE/PROCTOR HOSPITAL	1.0		INSTALL PROPOSED VIDEO DETECTION BELL CAMERA ON STRAIN POLE OF MAST ARM FOR WB PROCTOR HOSPITAL ENTRANCE (ESTIMATED CAT 5 CABLE LENGTH = 121 FT.)
	PEORIA	80/20	IL 40 (KNOXVILLE AVE.) & NORTH LN./NORTHPOINT	1.0		INSTALL PROPOSED VIDEO DETECTION BELL CAMERA ON STRAIN POLE OF MAST ARM FOR WB NORTHPOINT SHOPPING CENTER (ESTIMATED CAT 5 CABLE LENGTH = 74 FT.)
	PEORIA	80/20	IL 40 (KNOXVILLE AVE.) & RAVINSWOOD	1.0		INSTALL PROPOSED VIDEO DETECTION BELL CAMERA ON STRAIN POLE OF MAST ARM FOR WB RICHMAR (ESTIMATED CAT 5 CABLE LENGTH = 84 FT.)
	PEORIA	80/20	US 150 (WAR MEMORIAL DR.) & ACADEMIC DR.	1.0		INSTALL PROPOSED VIDEO DETECTION BELL CAMERA ON STRAIN POLE OF MAST ARM FOR EB US 150 (WAR MEMORIAL DR.) (ESTIMATED CAT 5 CABLE LENGTH = 89 FT.)
PEORIA	80/20	US 150 (WAR MEMORIAL DR.) & GLEN HOLLOW	1.0	1.0	INSTALL PROPOSED VIDEO DETECTION BELL CAMERA ON STRAIN POLE OF MAST ARM FACING GLEN HOLLOW APPROACH (ESTIMATED CAT 5 CABLE LENGTH = 79 FT.)	
TAZEWELL	EAST PEORIA	100/0	IL 116 (MAIN ST.) & IL 8 (CAMP ST.)	1.0		INSTALL PROPOSED VIDEO DETECTION BELL CAMERA ON STRAIN POLE OF MAST ARM FOR NB IL 116 (MAIN ST.) (ESTIMATED CAT 5 CABLE LENGTH = 121 FT.). FURNISH AND INSTALL ADDITIONAL GRIDSMART GS-3 SMA CAMERA ON MAST ARM LUMINAIRES BRACKET FOR NB IL 116 (MAIN ST.) DETECTION (ESTIMATED CAT 5 CABLE LENGTH = 121 FT.)
<b>TOTALS</b>				<b>18.0</b>	<b>2.0</b>	

USER NAME = HOWALDER	DESIGNED -	REVISED -
	DRAWN -	REVISED -
PLOT SCALE = 42.9315 ' / in.	CHECKED -	REVISED -
PLOT DATE = 8/21/2020	DATE -	REVISED -

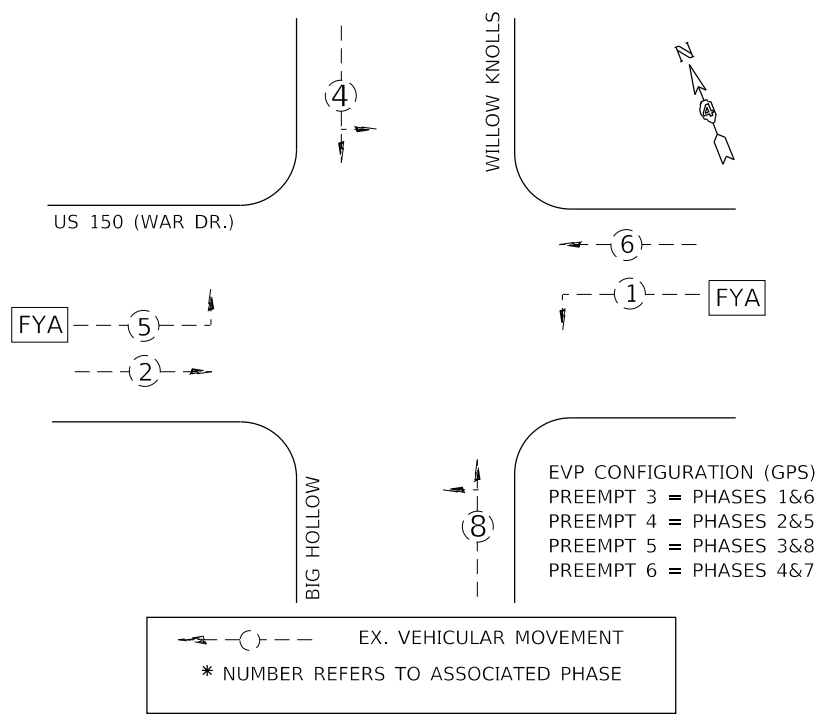
**STATE OF ILLINOIS  
 DEPARTMENT OF TRANSPORTATION**

SCHEDULE OF QUANTITIES			
SCALE:	SHEET	OF	SHEETS

F.A. RTE.	SECTION	COUNTY	TOTAL SHEETS	SHEET NO.
VAR.	D4 ITS REPLACE 2021-1	PEORIA TAZEWELL	6	5
CONTRACT NO. 68G05				
ILLINOIS		FED. AID PROJECT		

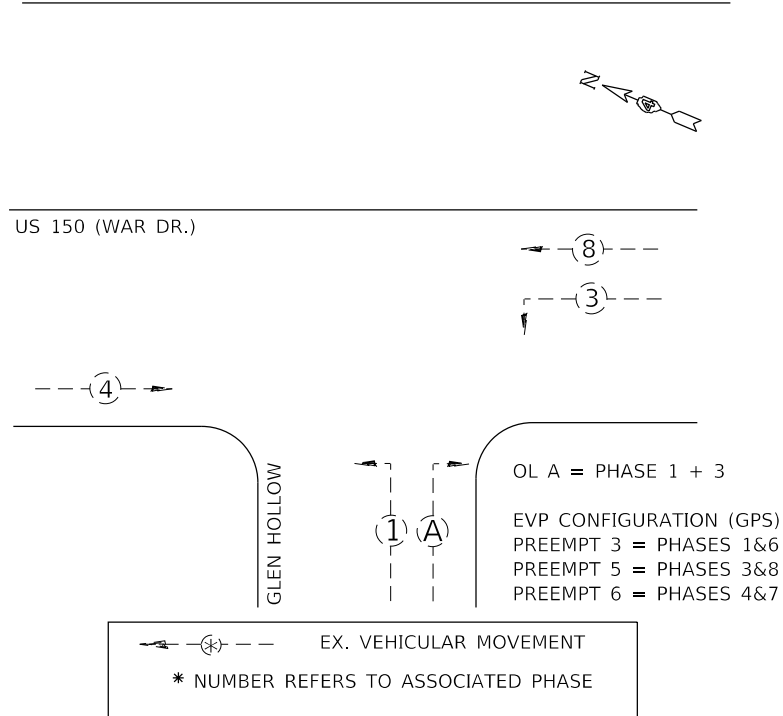
EXISTING PHASE DIAGRAM

NAME OF INTERSECTION US 150 (WAR DR.) & BIG HOLLOW/WILLOW KNOLLS  
 PROPOSED CONTROLLER: ECONOLITE COBALT CONTROLLER  
 (TS-2 TYPE 2) IN PROP. TYPE IV TS-2 CABINET (16 POS.) WITH RISER



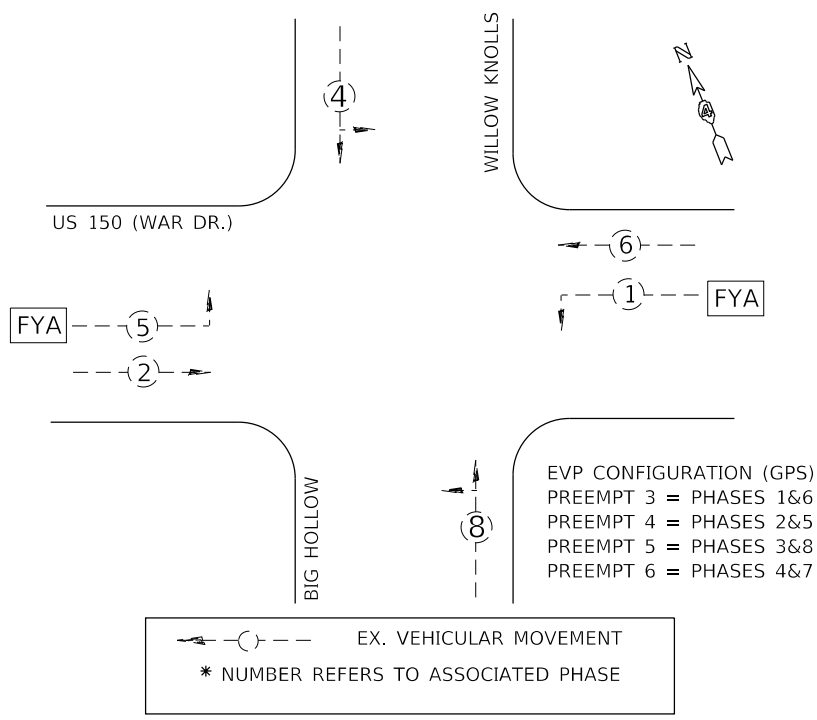
EXISTING PHASE DIAGRAM

NAME OF INTERSECTION US 150 (WAR DR.) & GLEN HOLLOW  
 PROPOSED CONTROLLER: ECONOLITE COBALT CONTROLLER  
 (TS-2 TYPE 2) IN PROP. TYPE IV TS-2 CABINET (16 POS.) WITH RISER



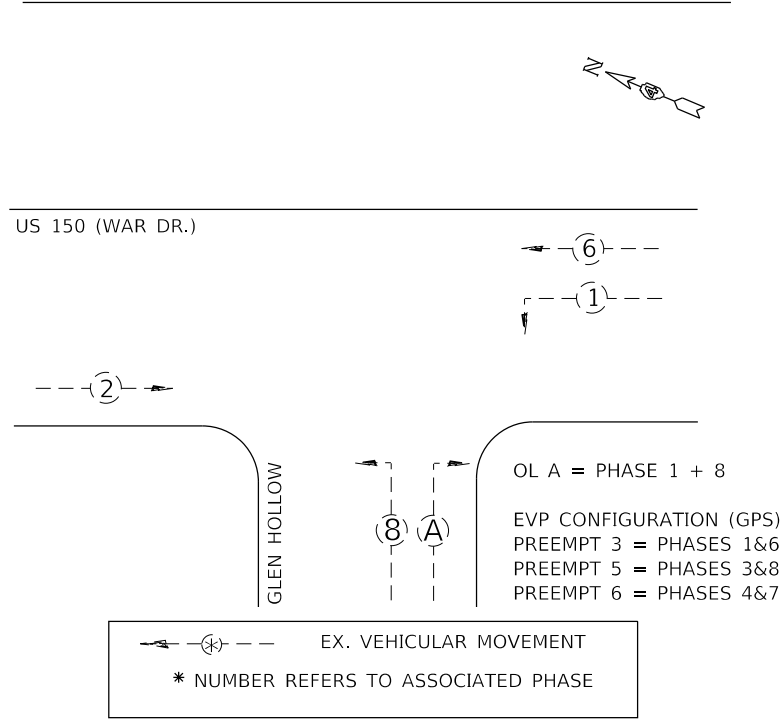
PROPOSED PHASE DIAGRAM

NAME OF INTERSECTION US 150 (WAR DR.) & BIG HOLLOW/WILLOW KNOLLS  
 PROPOSED CONTROLLER: ECONOLITE COBALT CONTROLLER (RE-USE EX.)  
 (TS-2 TYPE 2) IN PROP. TYPE IV TS-2 CABINET (16 POS.) WITH RISER



PROPOSED PHASE DIAGRAM

NAME OF INTERSECTION US 150 (WAR DR.) & GLEN HOLLOW  
 PROPOSED CONTROLLER: ECONOLITE COBALT CONTROLLER (RE-USE EX.)  
 (TS-2 TYPE 2) IN PROP. TYPE IV TS-2 CABINET (16 POS.) WITH RISER



TRAFFIC SIGNAL CONSTRUCTION STAGING NOTES

1. THE CONTRACTOR WILL BE ALLOWED TO PLACE THE INTERSECTION INTO ALL-RED FLASH MODE TO FACILITATE THE INSTALLATION OF THE PROPOSED TRAFFIC SIGNAL CONTROLLERS, CABINETS, ELECTRICAL CABLE, AND OTHER COMPONENTS.
2. THE CONTRACTOR SHALL FURNISH AND INSTALL A MINIMUM OF TWO STOP SIGNS PER APPROACH WHEN THE INTERSECTION IS OPERATING IN ALL-RED FLASH MODE. THE TRAFFIC SIGNALS MAY BE PLACED INTO ALL-RED FLASH MODE BETWEEN THE HOURS OF 8:30AM AND 3:00PM ONLY.
3. THE CONTRACTOR SHALL RESTORE THE TRAFFIC SIGNAL TO NORMAL OPERATION AT ALL OTHER TIMES, UNLESS SPECIFICALLY DIRECTED OTHERWISE BY THE ENGINEER.
4. THE CONTRACTOR WILL BE ALLOWED TO PLACE THE INTERSECTION INTO FLASH FOR A MAXIMUM OF FIVE DAYS.
5. ALL COSTS (LABOR, MATERIALS, AND EQUIPMENT) ASSOCIATED WITH THESE REQUIREMENTS SHALL BE INCLUDED IN THE CONTRACT BID PRICE. THERE WILL BE NO ADDITIONAL COMPENSATION FOR ITEMS REQUIREMENT TO IMPLEMENT STAGING, INCLUDED BUT NOT LIMITED TO, TEMPORARY CABLE SPLICES, TEMPORARY TRAFFIC POSTS, AND PREMIUM TIME HOURS.

TRAFFIC SIGNAL CONTROLLER CABINET INSTALLATION NOTES

1. THE CONTRACTOR SHALL VERIFY THE EXISTING CONTROLLER CABINET PHASING, OVERLAPS, AND PREEMPTION PRIOR TO RELEASING THE CONTROLLER CABINET.
2. THE CONTRACTOR SHALL COORDINATE WITH THE CITY OF PEORIA TO TEST THE EVP SYSTEM COMPONENTS TO ENSURE THAT THE SYSTEM IS OPERATING CORRECTLY.

MODEL: Default  
 FILE: \\mhc\c\common\GEN\Transfer - Bureau\68G05 - Final Plans\68G05 - Video Detector Replacement Project (final 8-20-20).dgn

USER NAME = HOWALDER	DESIGNED -	REVISED -
	DRAWN -	REVISED -
PLOT SCALE = 42.9315' / in.	CHECKED -	REVISED -
PLOT DATE = 8/21/2020	DATE -	REVISED -

STATE OF ILLINOIS  
 DEPARTMENT OF TRANSPORTATION

PROPOSED TRAFFIC SIGNAL CONTROLLER PHASE DIAGRAMS  
 AND CONSTRUCTION NOTES

SCALE: SHEET OF SHEETS STA. TO STA.

F.A. RTE.	SECTION	COUNTY	TOTAL SHEETS	SHEET NO.
VAR.	D4 ITS REPLACE 2021-1	PEORIA TAEWELL	6	5
			CONTRACT NO. 68G05	
		ILLINOIS	FED. AID PROJECT	