

STATE OF ILLINOIS
DEPARTMENT OF TRANSPORTATION

PROPOSED
HIGHWAY PLANS

VARIOUS ROUTES
DIST 8 WEED SPRAYING 2021-2
WEED SPRAYING
VARIOUS COUNTIES

INDEX OF SHEETS

1. COVER SHEET, INDEX OF SHEETS, MAP
2. HIGHWAY STANDARDS, SPRAY SCHEDULE, AND COMMITMENTS
3. SUMMARY OF QUANTITIES
- 4.-7. OMISSIONS/NO SPRAY SITES

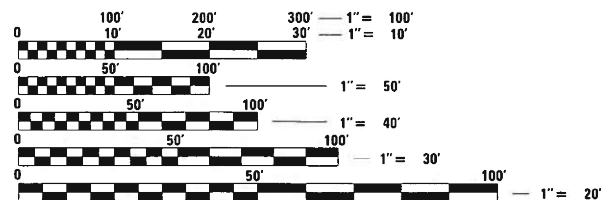
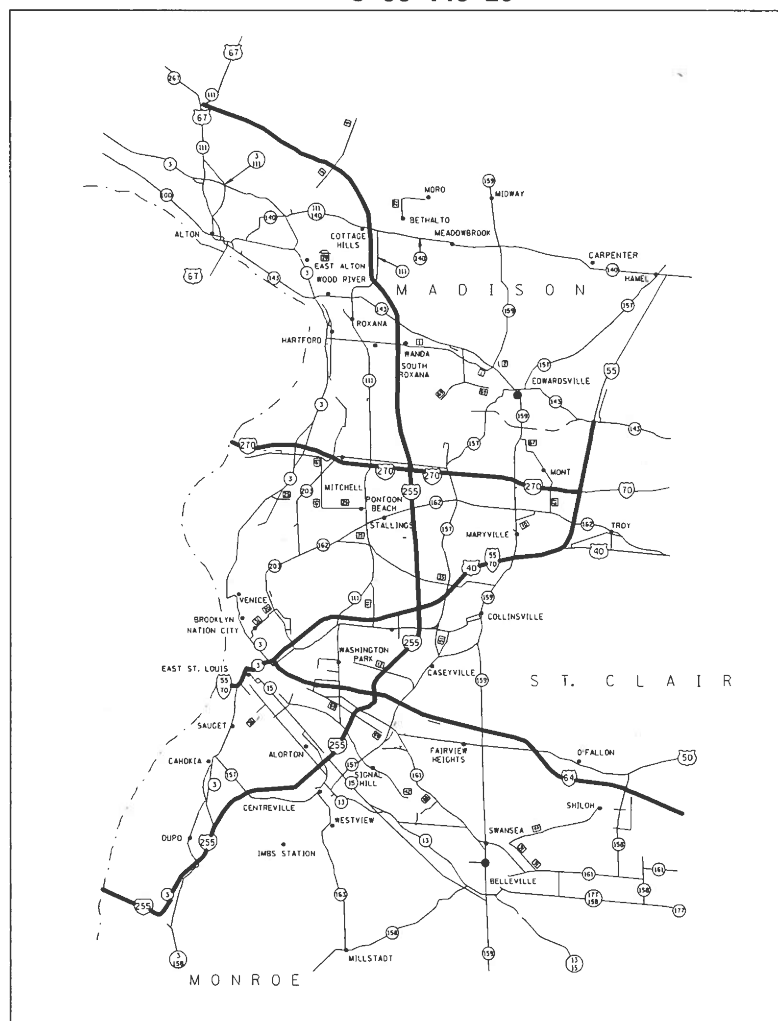
F.A. RTE.	SECTION	COUNTY	TOTAL SHEETS	SHEET NO.
*	**	VARIOUS	7	1
		ILLINOIS	CONTRACT NO. 76P07	

* VARIOUS
** DIST 8 WEED SPRAYING 2020-1

D-98-136-20



C-98-146-20



FULL SIZE PLANS HAVE BEEN PREPARED USING STANDARD ENGINEERING SCALES. REDUCED SIZED PLANS WILL NOT CONFORM TO STANDARD SCALES. IN MAKING MEASUREMENTS ON REDUCED PLANS, THE ABOVE SCALES MAY BE USED.

J.U.L.I.E.
JOINT UTILITY LOCATION INFORMATION FOR EXCAVATION
1-800-892-0123
OR 811

PROJECT ENGINEER: HERVE GELIN (618) 346-3179
SQUAD LEADER: BILLIE OWEN (618) 346-3209
PROJECT MANAGER: AL SCHULER (618) 349-2188
CONTRACT NO. 76P07

STATE OF ILLINOIS
DEPARTMENT OF TRANSPORTATION

SUBMITTED Aug. 6, 2020
Keith Roberts
REGIONAL ENGINEER

October 2, 2020
[Signature]
ENGINEER OF DESIGN AND ENVIRONMENT

October 2, 2020
[Signature]
DIRECTOR OF HIGHWAYS PROJECT IMPLEMENTATION

PRINTED BY THE AUTHORITY
OF THE STATE OF ILLINOIS

COMMITMENTS
NONE

STANDARDS

701001-02
701006-05
701101-05
701106-02
701301-04
701426-09
701901-08

DISTRICT 8 WEED SPRAYING 2021-2				
COUNTY	ROUTE	MILES	2021	2022
			ACRES	ACRES
MADISON	FAI 55/70	30	182	182
	FAI 270	22	133	133
	FAI 255*	21	127	127
	ROUTE 255*	52	315	315
	FAI 55	20	121	121
ST. CLAIR	FAI 64	26	158	158
	FAI 255*	35	212	212
MONROE	FAI 255*	20	121	121
TOTAL		226	2740	

50' SWATH
*TO INCLUDE MEDIANS WHERE FEASIBLE

IT IS ESTIMATED THAT THE CONTRACTOR WILL NEED 55 GALLONS OF "METHOD", OR APPROVED EQUIVALENT, 55 GALLONS OF "MILESTONE", OR APPROVED EQUIVALENT, AND 30 POUNDS OF "ESCORT", OR APPROVED EQUIVALENT FOR HERBICIDE SPRAYING. OFF ROAD AND ON ROAD QUANTITIES ARE APPROXIMATE AND ARE SUBJECT TO CHANGE.

• VARIOUS
•• DIST 8 WEED SPRAYING 2021-2

MODEL: Default
FILE: \\nrcs-pix\uplanroom\data\illinois.gov\PWIDOT\Documents\DOT_Offices\District 8\Projects\DIST 8 WEED SPRAYING 2021-2\DWG\std-std.dwg

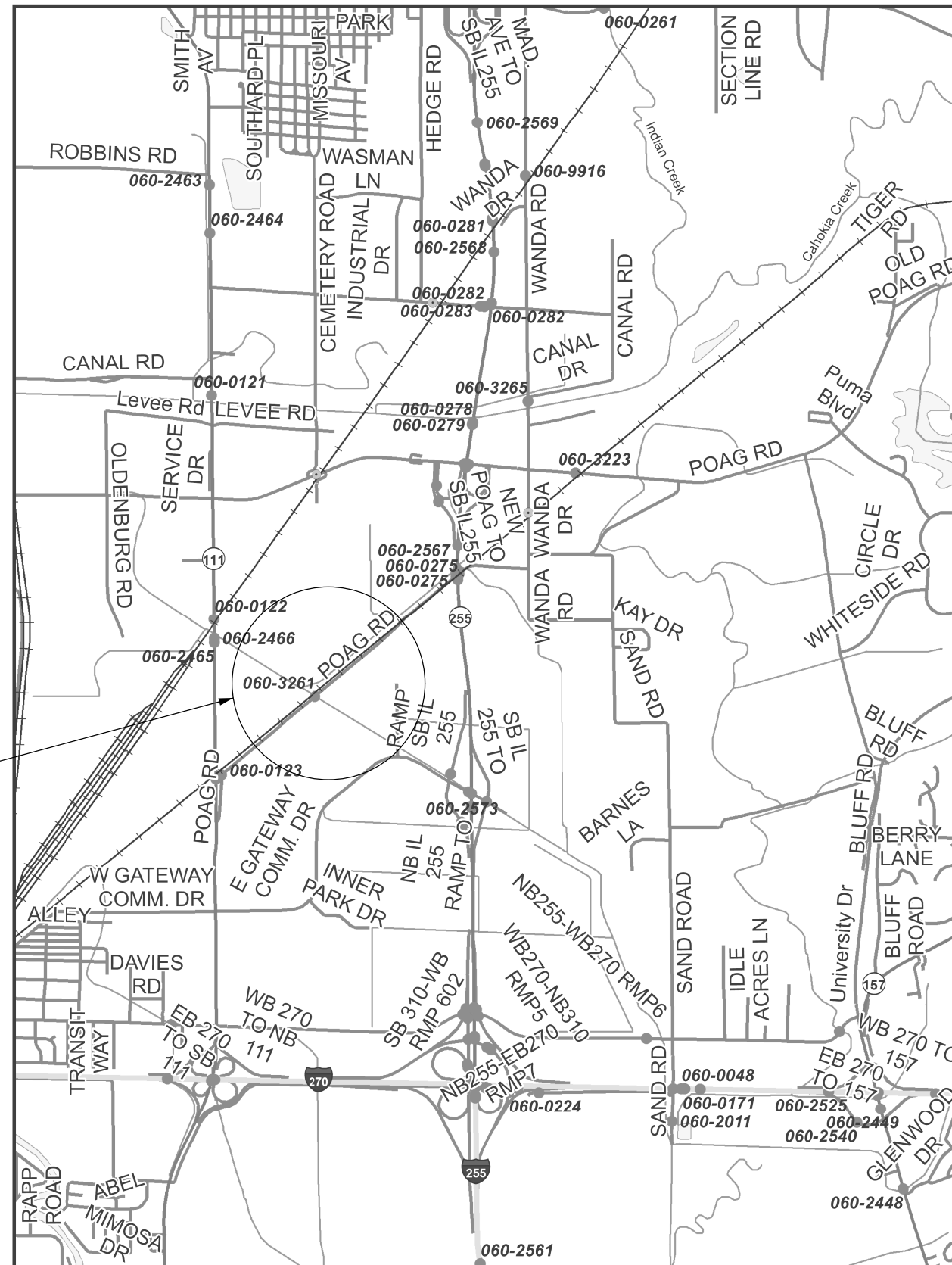
USER NAME = lewiska	DESIGNED -	REVISED -	STATE OF ILLINOIS DEPARTMENT OF TRANSPORTATION	HIGHWAY STANDARDS, SPRAY SCHEDULE, AND COMMITMENTS			F.A. RTE.	SECTION	COUNTY	TOTAL SHEETS	SHEET NO.
PLOT SCALE = 100,0000' / in.	DRAWN -	REVISED -					-	**	VARIOUS	7	2
PLOT DATE = 8/12/2020	CHECKED -	REVISED -		SCALE: SHEET OF SHEETS STA. TO STA.			CONTRACT NO. 76P07		ILLINOIS	FED. AID PROJECT	
	DATE -	REVISED -									

MODEL: Default
 FILE: \\nrcs-pc\pub\lansom.dta\illinois.gov\PWIDOT\Documents\DOT_Offices\District 8\Projects\0876P07\CADDData\CAD\pieces\0876P07-ph-500.dgn

CODE NO.	ITEM	UNIT	TOTAL QUANTITY	CONSTR. CODE
				URBAN 100% STATE
				0031
67100100	MOBILIZATION	LSUM	1	1
K0012950	HERBICIDE SPRAYING	ACRE	2740	2740

- VARIOUS
- DIST 8 WEED SPRAYING 2021-2

USER NAME = lewiska	DESIGNED -	REVISED -	STATE OF ILLINOIS DEPARTMENT OF TRANSPORTATION	SUMMARY OF QUANTITIES				F.A. RTE.	SECTION	COUNTY	TOTAL SHEETS	SHEET NO.
PLOT SCALE = 100.0000' / in.	DRAWN -	REVISED -						-	**	VARIOUS	7	3
PLOT DATE = 8/13/2020	CHECKED -	REVISED -		SCALE: SHEET OF SHEETS STA. TO STA.				CONTRACT NO. 76P07				
	DATE -	REVISED -		ILLINOIS FED. AID PROJECT								



DO NOT SPRAY

MADISON COUNTY
POAG R.R. PRAIRIE
SECTION 24, T4N-R9W

- VARIOUS
- DIST 8 WEED SPRAYING 2021-2

MODEL: Default
 FILE: \\nlsr01\pub\lhamroom\data\illinois.gov\PWIDOT\Documents\DOT_Offices\Dist1ct_9\Projects\0676907\CADD\data\CAD\pieces\0676907_rpt-plan.dgn

USER NAME = lewiska	DESIGNED -	REVISED -
	DRAWN -	REVISED -
PLOT SCALE = 100,0000' / in.	CHECKED -	REVISED -
PLOT DATE = 8/12/2020	DATE -	REVISED -

**STATE OF ILLINOIS
DEPARTMENT OF TRANSPORTATION**

**OMISSONS CHOUTEAU &
GRANITE CITY TOWNSHIP**

SCALE: SHEET OF SHEETS STA. TO STA.

F.A. RTE.	SECTION	COUNTY	TOTAL SHEETS	SHEET NO.
-	**	VARIOUS	7	5
CONTRACT NO. 76P07				
		ILLINOIS	FED. AID PROJECT	

