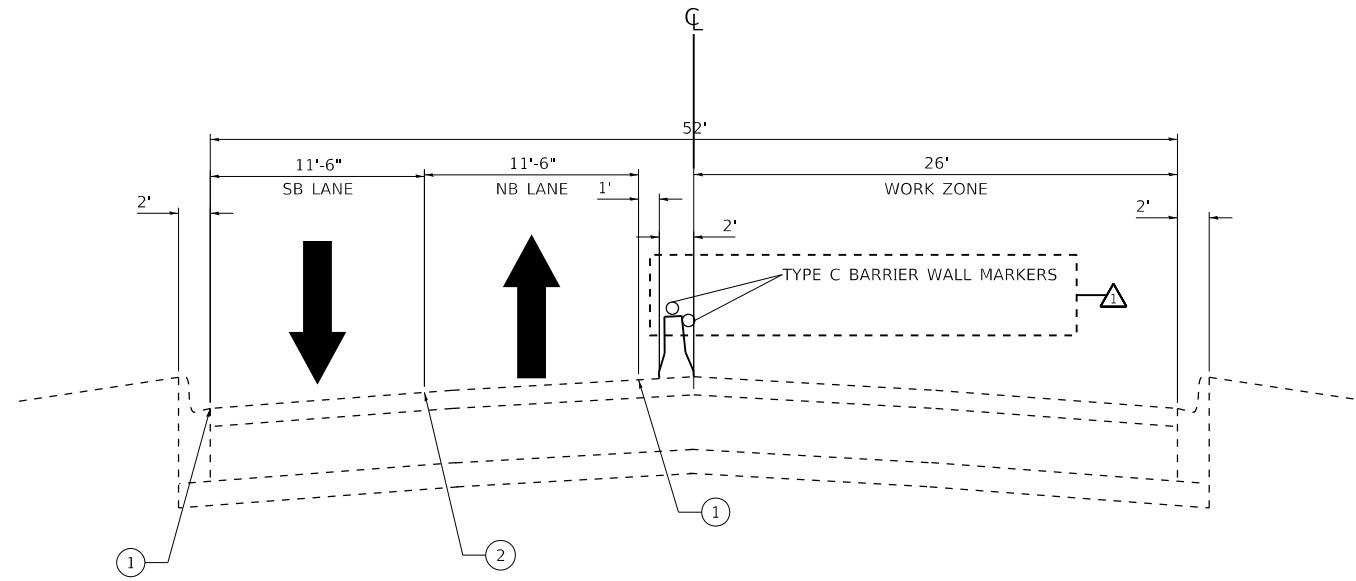


SUMMARY OF QUANTITIES			CONSTRUCTION TYPE CODE					SUMMARY OF QUANTITIES			CONSTRUCTION TYPE CODE							
CODE NO	ITEM	UNIT	URBAN TOTAL QUANTITIES	100% STATE 0047					CODE NO	ITEM	UNIT	URBAN TOTAL QUANTITIES	100% STATE 0047					
50102400	CONCRETE REMOVAL	CU YD	2.66	2.66					* 78200011	BARRIER WALL REFLECTORS, TYPE C	EACH	32	32					
50157300	PROTECTIVE SHIELD	SO YD	68	68					X0327980	PAVEMENT MARKING REMOVAL - WATER BLASTING	SO FT	1491	1491					
50300255	CONCRETE SUPERSTRUCTURE	CU YD	2.16	2.16														
50500405	FURNISHING AND ERECTING STRUCTURAL STEEL	POUND	3410	3410					X7010216	TRAFFIC CONTROL AND PROTECTION, (SPECIAL)	L SUM	1	1					
52000015	PREFORMED JOINT SEAL 1 1/2"	FOOT	136	136														
67000400	ENGINEER'S FIELD OFFICE, TYPE A	CAL MO	6	6					X7011015	TRAFFIC CONTROL AND PROTECTION (EXPRESSWAYS)	L SUM	1	1					
67100100	MOBILIZATION	L SUM	1	1					X7800956	PREFORMED PLASTIC PAVEMENT MARKING, TYPE B - INLAID - CONTRACT - LINE 7"	FOOT	120	120					
70200100	NIGHTTIME WORK ZONE LIGHTING	L SUM	1	1					X7830076	GROOVING FOR RECESSED PAVEMENT MARKING 9"	FOOT	120	120					
70300904	PAVEMENT MARKING TAPE, TYPE IV 4"	FOOT	3692	3692					Z0001800	APPROACH SLAB REPAIR (PARTIAL DEPTH)	SO YD	12	12					
70300924	PAVEMENT MARKING TAPE, TYPE IV 24"	FOOT	130	130					Z0001903	STRUCTURAL STEEL REMOVAL	POUND	3210	3210					
70400100	TEMPORARY CONCRETE BARRIER	FOOT	250	250					Z0001905	STRUCTURAL STEEL REPAIR	POUND	2820	2820					
70400200	RELOCATE TEMPORARY CONCRETE BARRIER	FOOT	250	250					Z0010400	CLEANING BRIDGE SEATS	SO FT	280	280					
70600260	IMPACT ATTENUATORS, TEMPORARY (FULLY REDIRECTIVE, NARROW), TEST LEVEL 3	EACH	2	2					Z0016001	DECK SLAB REPAIR (FULL DEPTH, TYPE I)	SO YD	1	1					
70600332	IMPACT ATTENUATORS, RELOCATE (FULLY REDIRECTIVE, NARROW), TEST LEVEL 3	EACH	2	2					Z0016002	DECK SLAB REPAIR (FULL DEPTH, TYPE II)	SO YD	5	5					
78009004	MODIFIED URETHANE PAVEMENT MARKING - LINE 4"	FOOT	300	300					Z0016200	DECK SLAB REPAIR (PARTIAL)	SO YD	1	1					
* 78000200	THERMOPLASTIC PAVEMENT MARKING - LINE 4"	FOOT	3692	3692					Z0030850	TEMPORARY INFORMATION SIGNING	SO FT	51.4	51.4					
78009024	MODIFIED URETHANE PAVEMENT MARKING - LINE 24"	FOOT	60	60					Z0041895	POLYMER CONCRETE	CU FT	16.25	16.25					
* 78000650	THERMOPLASTIC PAVEMENT MARKING - LINE 24"	FOOT	130	130					<del>Z0073300</del>	<del>TEMPORARY SHORING AND BRIDGING</del>	<del>L SUM</del>	<del>1</del>	<del>1</del>					Ø 0042
									Ø Z0076604	TRAINEES - TRAINING PROGRAM GRADUATE	HOURS	500	500					* SPECIALTY ITEM

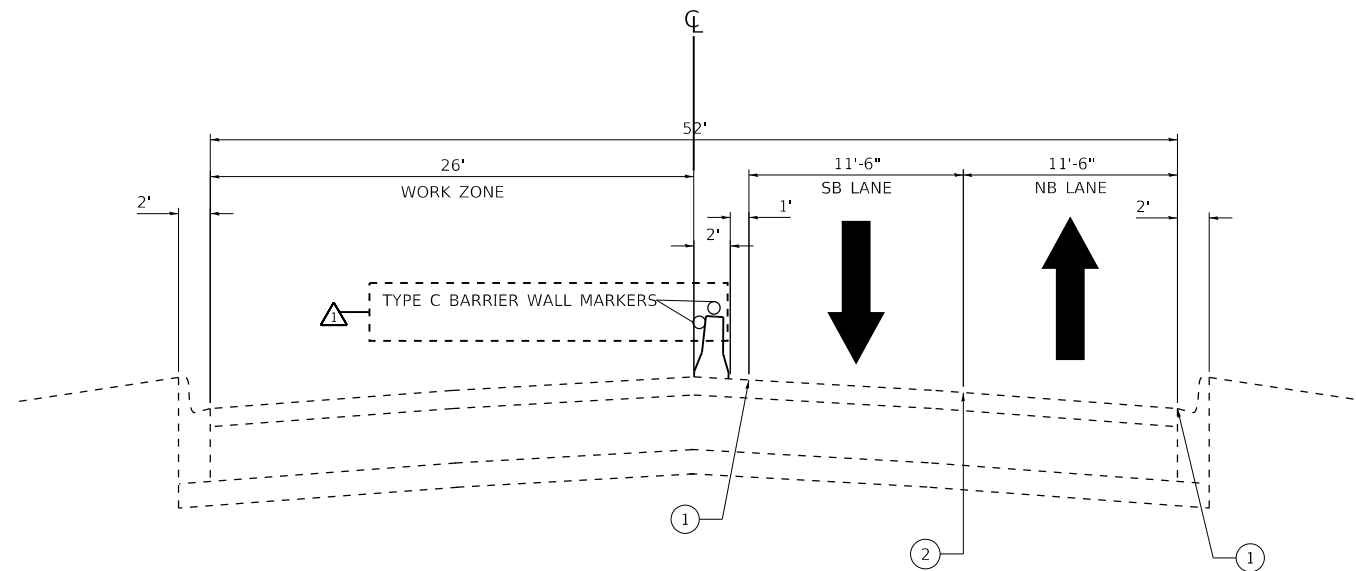
△ REVISED SHEET 10/14/2020

△ REV-SEP



**IL 171 (1ST AVE.)**

STAGE 1 CONSTRUCTION (LOOKING NORTH)  
STA 10+35 TO STA 12+45



**IL 171 (1ST AVE.)**

STAGE 2 CONSTRUCTION (LOOKING NORTH)  
STA 10+35 TO STA 12+45

**LEGEND:**

- ① PAVEMENT MARKING TAPE, TYPE IV 4" (SOLID WHITE)
- ② PAVEMENT MARKING TAPE, TYPE IV 4" (DOUBLE YELLOW)

MODEL: Default  
 FILE: \\nls01c-pw\pub\arooms\edat\illinois.gov\PWIDOT\Documents\DOT\_Offices\District\_1\Project\Ill\_171\_Over\_I-290\CADD\data\Design\IL171-1st-ave-bldg.dgn

REVISED SHEET 10/14/2020

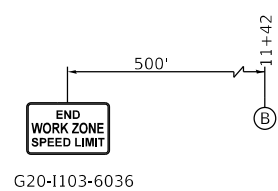
USER NAME = rothjp DESIGNED - DRAWN - PLOT SCALE = 100.0010' / in. CHECKED - PLOT DATE = 10/14/2020 DATE -	DESIGNED - REVISIONS -	REVISIONS - REVISIONS - REVISIONS - REVISIONS -	<b>STATE OF ILLINOIS DEPARTMENT OF TRANSPORTATION</b>	<b>TYPICAL SECTION 1ST AVENUE OVER I-290</b>			F.A.P. RTE. 372 SECTION 2020-204-BR&BJR COUNTY COOK TOTAL SHEETS 4 SHEET NO. 25 CONTRACT NO. 62M78
	SCALE: SHEET 1 OF 1 SHEETS STA. TO STA.			ILLINOIS FED. AID PROJECT			

**MOT SYMBOL LEGEND**

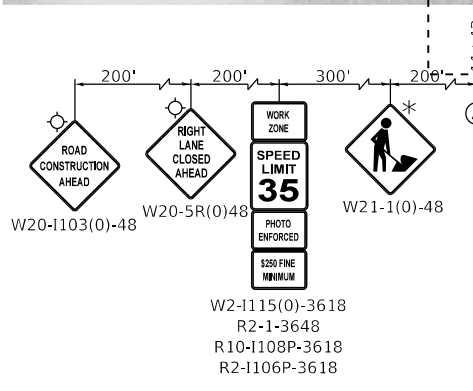
- WORK ZONE
- TYPE II BARRICADES OR DRUMS (SPACED 50' C-C OR AS NOTED BELOW) DEVICES IN TAPER (20' C-C) DEVICES IN RADII (10' C-C)
- BARRICADE OR DRUM WITH FLASHING LIGHT
- TYPE III BARRICADE WITH FLASHING LIGHTS
- DIRECTION OF TRAFFIC FLOW
- SIGN ON PORTABLE OR PERMANENT SUPPORT
- ARROW BOARD
- HIGH INTENSITY AMBER LIGHT
- TEMPORARY CONCRETE BARRIER
- IMPACT ATTENUATORS, TEMPORARY (FULLY REDIRECTIVE, NARROW, TEST LEVEL 3)

**MOT PROPOSED LEGEND**

- 1 PAVEMENT MARKING TAPE, TYPE IV 4" (WHITE) (70300904)
- 2 PAVEMENT MARKING TAPE, TYPE IV 4" (LETTERS AND SYMBOLS WHITE) (70300904)
- 3 PAVEMENT MARKING TAPE, TYPE IV 4" (YELLOW) (70300904)
- 4 PAVEMENT MARKING TAPE, TYPE IV 4" (DOUBLE YELLOW) (70300904)
- 5 PAVEMENT MARKING TAPE, TYPE IV 24" (WHITE) (70300924)
- 6 PAVEMENT MARKING TAPE, TYPE IV 8" (WHITE) (70300908)
- 7 PAVEMENT MARKING TAPE, TYPE IV 8" (3'-DASH 9'-SKIP WHITE) (70300908)



G20-1103-6036



\*THIS SIGN SHALL BE COVERED WHEN WORKERS ARE NOT PRESENT FOR MORE THAN ONE HOUR

- W2-1115(0)-3618
- R2-1-3648
- R10-1108P-3618
- R2-1106P-3618

MODEL: Default  
FILE: \\nrcs-pub\pub\baronm.d\all\ink\scop\WIDOT\Documents\DOT Office\District 1\Project\11171 over I-290\CD\Bataa\Draw\m1171-1-18-2020.dwg

**STATE OF ILLINOIS  
DEPARTMENT OF TRANSPORTATION**

**MAINTENANCE OF TRAFFIC  
1ST AVENUE OVER I-290 (STAGE 1)**

SCALE: SHEET 1 OF 2 SHEETS STA. TO STA.

F.A.P. RTE.	SECTION	COUNTY	TOTAL SHEETS	SHEET NO.
372	2020-204-BR&BJR	COOK	5	25
CONTRACT NO. 62M78				
ILLINOIS FED. AID PROJECT				

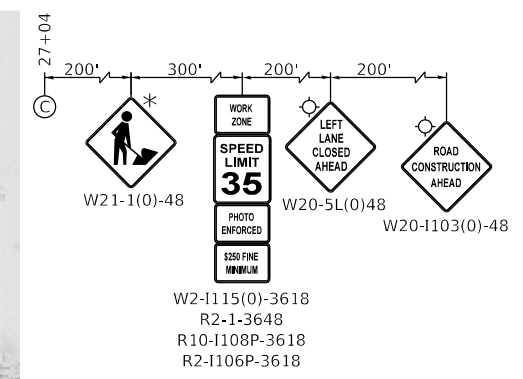
REVISED SHEET 10/15/2020

**MOT SYMBOL LEGEND**

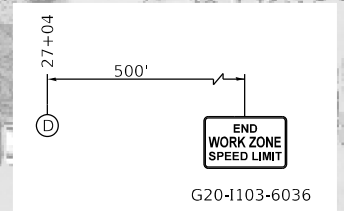
- WORK ZONE
- TYPE II BARRICADES OR DRUMS (SPACED 50' C-C OR AS NOTED BELOW) DEVICES IN TAPER (20' C-C) DEVICES IN RADII (10' C-C)
- BARRICADE OR DRUM WITH FLASHING LIGHT
- TYPE III BARRICADE WITH FLASHING LIGHTS
- DIRECTION OF TRAFFIC FLOW
- SIGN ON PORTABLE OR PERMANENT SUPPORT
- ARROW BOARD
- HIGH INTENSITY AMBER LIGHT
- TEMPORARY CONCRETE BARRIER
- IMPACT ATTENUATORS, TEMPORARY (FULLY REDIRECTIVE, NARROW, TEST LEVEL 3)

**MOT PROPOSED LEGEND**

- 1** PAVEMENT MARKING TAPE, TYPE IV 4" (WHITE) (70300904)
- 2** PAVEMENT MARKING TAPE, TYPE IV 4" (LETTERS AND SYMBOLS WHITE) (70300904)
- 3** PAVEMENT MARKING TAPE, TYPE IV 4" (YELLOW) (70300904)
- 4** PAVEMENT MARKING TAPE, TYPE IV 4" (DOUBLE YELLOW) (70300904)
- 5** PAVEMENT MARKING TAPE, TYPE IV 24" (WHITE) (70300924)
- 6** PAVEMENT MARKING TAPE, TYPE IV 8" (WHITE) (70300908)
- 7** PAVEMENT MARKING TAPE, TYPE IV 8" (3'-DASH 9'-SKIP WHITE) (70300908)



\*THIS SIGN SHALL BE COVERED WHEN WORKERS ARE NOT PRESENT FOR MORE THAN ONE HOUR



1 REVISED SHEET 10/15/2020

MODEL: Default  
FILE: h:\m\c\p\pub\barroom.dwg  
PROJECT: 171 over I-290/CAD\data\Des\p\m\171-sub-sub.dwg

USER NAME = rothjp	DESIGNED -	REVISED -
PLOT SCALE = 100.0010 ' / in.	DRAWN -	REVISED -
PLOT DATE = 10/14/2020	CHECKED -	REVISED -
	DATE -	REVISED -

**STATE OF ILLINOIS  
DEPARTMENT OF TRANSPORTATION**

<b>MAINTENANCE OF TRAFFIC 1ST AVENUE OVER I-290 (STAGE 2)</b>			
SCALE:	SHEET 2	OF 2 SHEETS	STA. TO STA.

F.A.P. RTE.	SECTION	COUNTY	TOTAL SHEETS	SHEET NO.
372	2020-204-BR&BJR	COOK	8	25
CONTRACT NO. 62M78				
ILLINOIS FED. AID PROJECT				

**GENERAL NOTES**

Fasteners shall be ASTM A325 Type 1, mechanically galvanized bolts.  
Bolts 3/4-in. Ø, holes 13/16-in. Ø, unless otherwise noted.

All structural steel shall be hot dip galvanized according to Special Provision "Hot Dip Galvanizing for Structural Steel".

No field welding is permitted except as specified in the contract documents.

Plan dimensions and details relative to existing plans are subject to nominal construction variations. The Contractor shall field verify existing dimensions and details affecting new construction and make necessary approved adjustments prior to construction or ordering of materials. Such variations shall not be cause for additional compensation for a change in scope of the work, however, the Contractor will be paid for the quantity actually furnished at the unit price bid for the work.

The existing structural steel coating contains lead. The Contractor shall take appropriate precautions to deal with the presence of lead on this project.

The Structural Steel Removal quantity is shown for bidding purposes only and will not be measured for payment.

Concrete repairs shall receive final surface finish according to Article 420.09(e)(1). Cost included with the appropriate repair item.

**INDEX OF SHEETS**

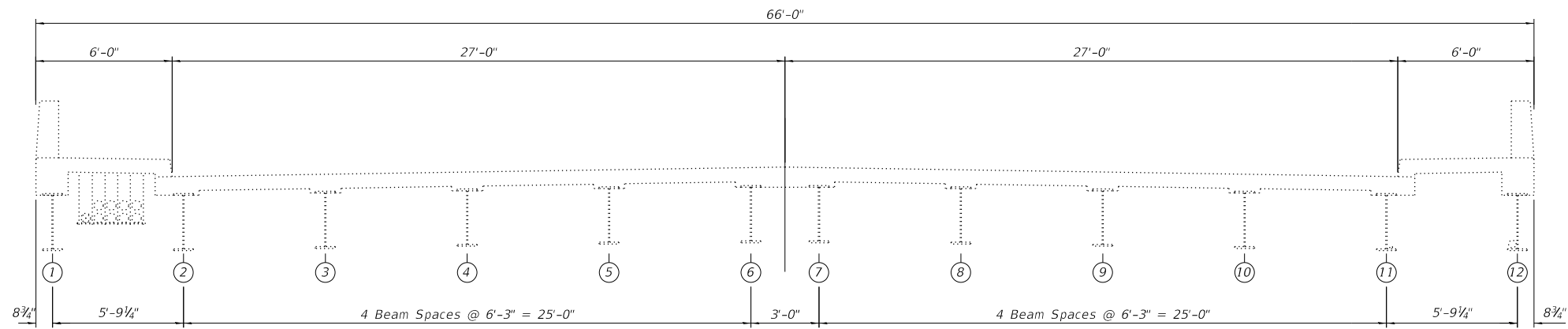
1. General Plan and Elevation
2. General Data
3. Deck & Joint Repair Details
4. Protective Shield Details
5. Expansion Joint Details
6. Structural Steel Repair Location Plan
7. Structural Steel Repair I
8. Structural Steel Repair II

**SCOPE OF WORK**

1. Expansion joint nosing repairs.
2. Expansion joints replacement.
3. Deck slab repairs.
4. Protective shield installation and removal.
5. Approach slab repairs.
6. Diaphragm removal and replacement at abutments.
7. Beam end repairs.

**TOTAL BILL OF MATERIAL**

ITEM	UNIT	TOTAL
Concrete Removal	Cu. Yd.	2.66
Protective Shield	Sq. Yd.	68
Furnishing and Erecting Structural Steel	Pound	3,410
Preformed Joint Seal 1 1/2"	Foot	136
Approach Slab Repair (Partial Depth)	Sq. Yd.	12
Structural Steel Removal	Pound	3,210
Structural Steel Repair	Pound	2,820
Deck Slab Repair (Full Depth, Type I)	Sq. Yd.	1
Deck Slab Repair (Full Depth, Type II)	Sq. Yd.	5
Deck Slab Repair (Partial)	Sq. Yd.	1
Polymer Concrete	Cu. Ft.	16.25
Concrete Superstructure	Cu. Yd.	2.16
Cleaning Bridge Seats	Sq. Ft.	280



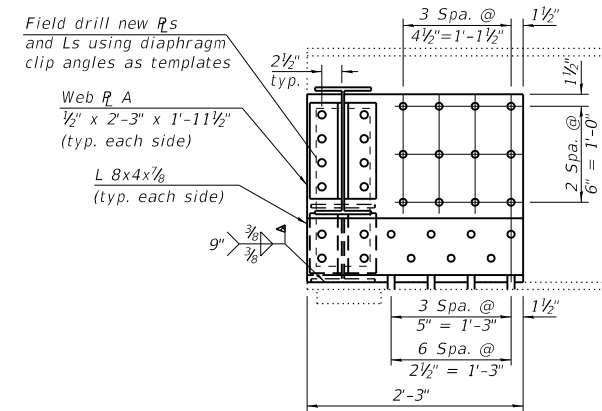
**EXISTING BRIDGE CROSS SECTION**  
Looking south

MODEL: Default  
FILE: \\nas01c.pw.state.il.us\pub\aroom.d\illinois.gov\PWIDOT\Documents\DOT\_Offices\District\_1\Project\11\_171\_over\_1290\CADD\data\Detail\11\_171\_sht-detail.dgn

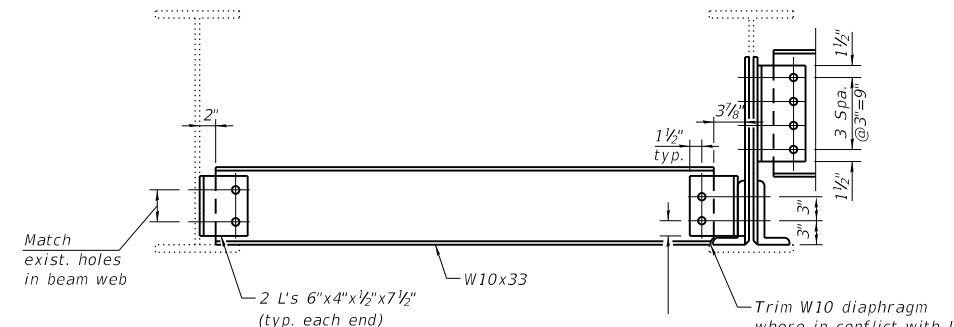
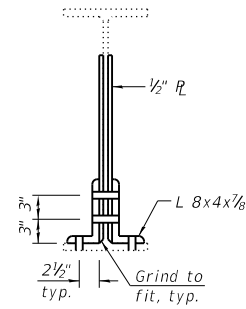
REVISD SHEET 10/14/2020

USER NAME = rothjp DESIGNED - DRAWN - PLOT SCALE = 0.2000' / in. CHECKED - PLOT DATE = 9/29/2020 DATE -	REVISED - REVISED - REVISED - REVISED -	<b>STATE OF ILLINOIS</b> <b>DEPARTMENT OF TRANSPORTATION</b>	<b>GENERAL DATA</b> <b>STRUCTURE NO. 016-0699 (1ST AVE.)</b>		F.A.P. RTE. 372	SECTION 2020-204-BR&BJR	COUNTY COOK	TOTAL SHEETS 11	SHEET NO. 25
			SCALE:	SHEET 2 OF 8 SHEETS	STA. TO STA.	CONTRACT NO. 62M78		ILLINOIS FED. AID PROJECT	

Field drill  $\frac{1}{8}$ "  $\phi$  holes in new  $R_s$  and  $L_s$  to match exist.



TYPE A BEAM END REPAIR



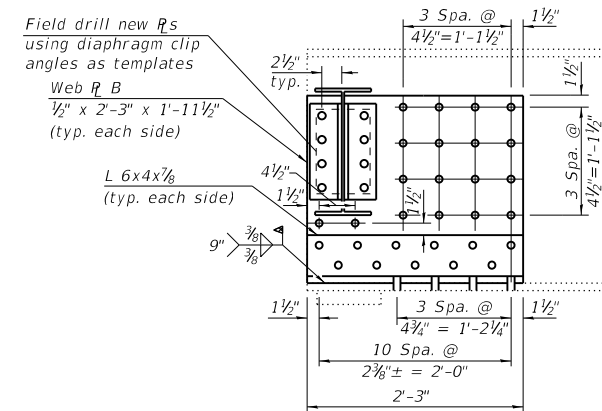
TYPE 1 DIAPHRAGM

TABLE 1 - DIAPHRAGMS

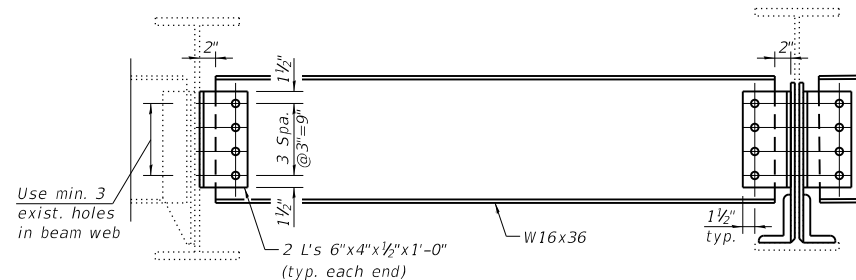
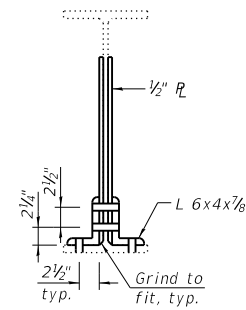
Diaphragm Type	Size	Length	Quantity
1	W10x33	5'-2 1/4"	2
2	W16x36	5'-9 7/8"	6
3	W16x36	5'-9 7/8"	2
4	W16x36	2'-6 3/8"	1
5	W16x36	5'-4 1/8"	1
6	W16x36	5'-3 3/8"	1

TABLE 2 - BOLTS

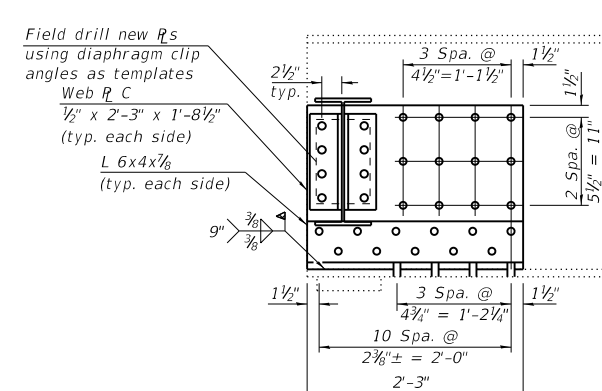
Beam	South Abutment		North Abutment	
	Diaphragm	Plate Repair	Diaphragm	Plate Repair
1	6	-	6	-
2	18	27	18	27
3	12	-	12	-
4	12	-	-	-
5	16	31	-	-
6	16	31	-	-
7	16	31	-	-
8	16	31	-	-
9	12	-	-	-
10	12	-	12	-
11	16	37	16	37
12	12	-	12	37



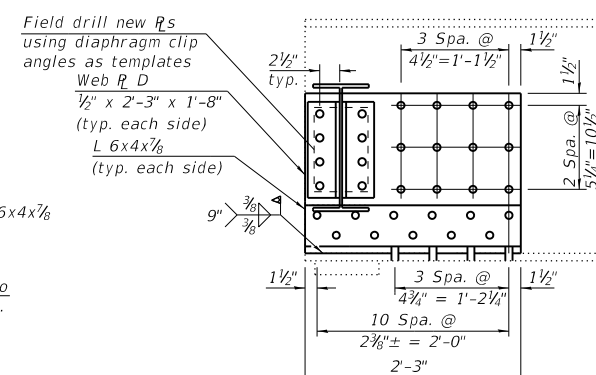
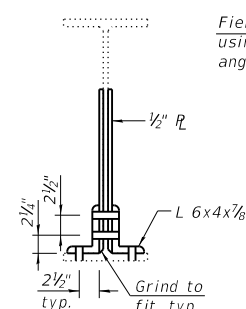
TYPE B BEAM END REPAIR



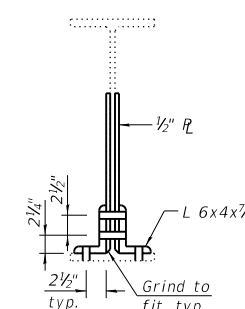
TYPE 2 DIAPHRAGM  
Types 3-6 Similar



TYPE C BEAM END REPAIR



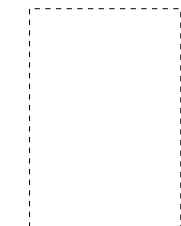
TYPE D BEAM END REPAIR



BILL OF MATERIAL

Item	Unit	Total
Furnishing and Erecting	Pound	3,410
Structural Steel	Pound	3,210
Structural Steel Repair	Pound	2,820

Notes:  
 Cost of drilling holes in existing steel members is included with Structural Steel Repair.  
 See sheet 6 of 8 for repair locations.  
 Field drill holes in diaphragms to allow for adjustment.  
 Installation of new diaphragms shall not commence until all bolts for new web plates and clip angles are fully tightened.  
 Existing structural steel that will be in contact with new structural steel shall be cleaned and painted prior to erection as required by the special provision "Cleaning and Painting Contact Surface Areas of Existing Steel Structures."



MODEL: Default  
 FILE: \\bls01p01\pub\baronm.d\allinks\gov\PI\DOT\Documents\IBOT\Office\Di\rtct\_1\Project\171\_ever\_1290\CADD\Draws\Detail\171-1st-detail.dgn

USER NAME = rothjp	DESIGNED -	REVISED -
	DRAWN -	REVISED -
PLOT SCALE = 0.2000' / in.	CHECKED -	REVISED -
PLOT DATE = 8/21/2020	DATE -	REVISED -

STATE OF ILLINOIS  
 DEPARTMENT OF TRANSPORTATION

STRUCTURAL STEEL REPAIRS II  
 STRUCTURE NO. 016-0699 (1ST AVE.)

SCALE: SHEET 8 OF 8 SHEETS STA. TO STA.

F.A.P. RTE.	SECTION	COUNTY	TOTAL SHEETS	SHEET NO.
372	2020-204-BR&BJR	COOK	22	17
CONTRACT NO. 62M78				
ILLINOIS FED. AID PROJECT				

1 REVISED SHEET 10/14/2020