

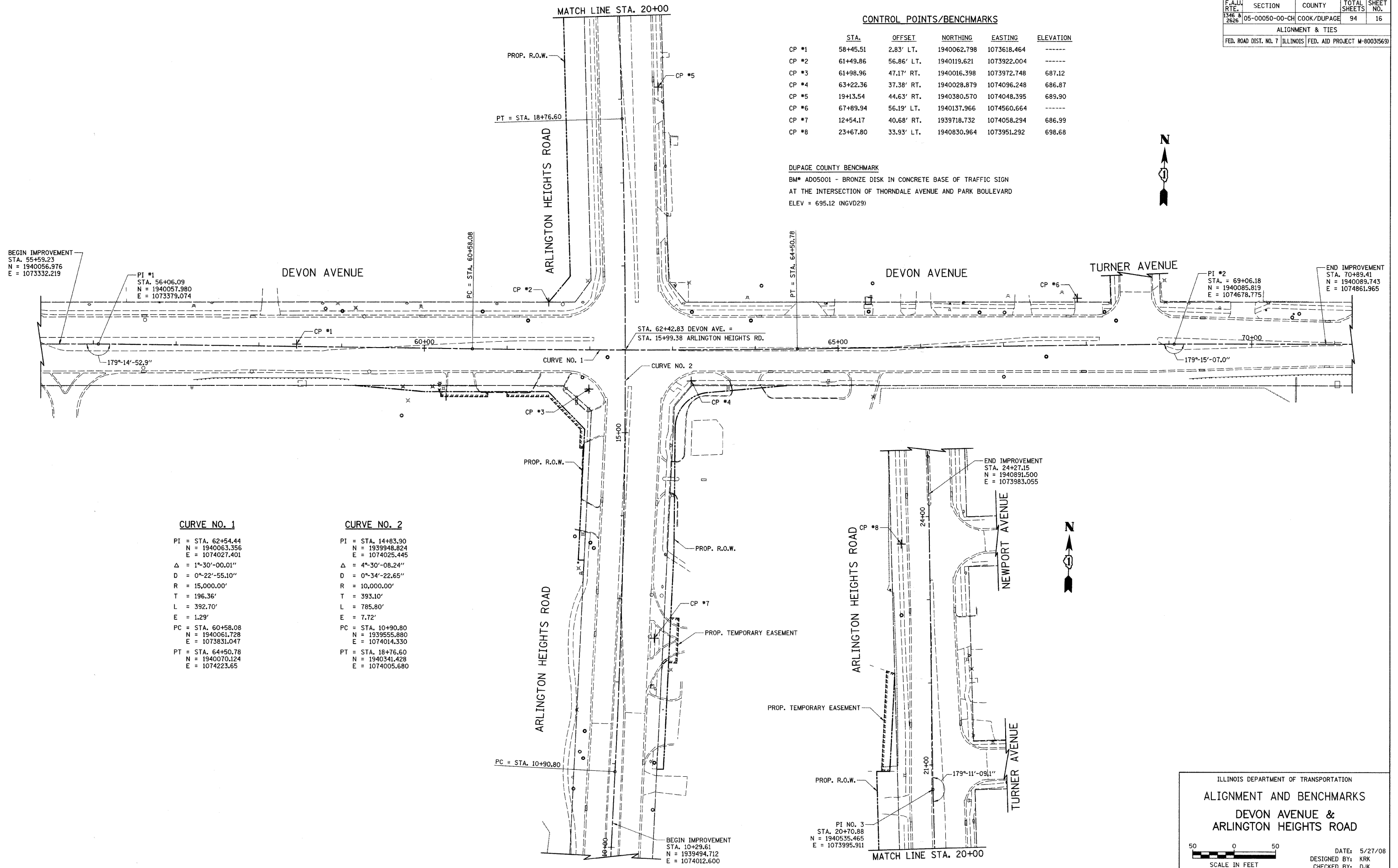
F.A.U. RTE.	SECTION	COUNTY	TOTAL SHEETS	SHEET NO.
1346 & 2826	05-00050-00-CH	COOK/DUPAGE	94	16
ALIGNMENT & TIES				
FED. ROAD DIST. NO. 7 ILLINOIS FED. AID PROJECT M-8003(569)				

**CONTROL POINTS/BENCHMARKS**

CP #	STA.	OFFSET	NORTHING	EASTING	ELEVATION
CP #1	58+45.51	2.83' LT.	1940062.798	1073618.464	-----
CP #2	61+49.86	56.86' LT.	1940119.621	1073922.004	-----
CP #3	61+98.96	47.17' RT.	1940016.398	1073972.748	687.12
CP #4	63+22.36	37.38' RT.	1940028.879	1074096.248	686.87
CP #5	19+13.54	44.63' RT.	1940380.570	1074048.395	689.90
CP #6	67+89.94	56.19' LT.	1940137.966	1074560.664	-----
CP #7	12+54.17	40.68' RT.	1939718.732	1074058.294	686.99
CP #8	23+67.80	33.93' LT.	1940830.964	1073951.292	698.68

**DUPAGE COUNTY BENCHMARK**

BM\* AD05001 - BRONZE DISK IN CONCRETE BASE OF TRAFFIC SIGN  
 AT THE INTERSECTION OF THORNDALE AVENUE AND PARK BOULEVARD  
 ELEV = 695.12 (NGVD29)



**CURVE NO. 1**

PI = STA. 62+54.44  
 N = 1940063.356  
 E = 1074027.401  
 Δ = 1°-30'-00.01"  
 D = 0°-22'-55.10"  
 R = 15,000.00'  
 T = 196.36'  
 L = 392.70'  
 E = 1.29'  
 PC = STA. 60+58.08  
 N = 1940061.728  
 E = 1073831.047  
 PT = STA. 64+50.78  
 N = 1940070.124  
 E = 1074223.65

**CURVE NO. 2**

PI = STA. 14+83.90  
 N = 1939948.824  
 E = 1074025.445  
 Δ = 4°-30'-08.24"  
 D = 0°-34'-22.65"  
 R = 10,000.00'  
 T = 393.10'  
 L = 785.80'  
 E = 7.72'  
 PC = STA. 10+90.80  
 N = 1939555.880  
 E = 1074014.330  
 PT = STA. 18+76.60  
 N = 1940341.428  
 E = 1074005.680



ILLINOIS DEPARTMENT OF TRANSPORTATION  
**ALIGNMENT AND BENCHMARKS**  
 DEVON AVENUE &  
 ARLINGTON HEIGHTS ROAD

50 0 50  
 SCALE IN FEET

DATE: 5/27/08  
 DESIGNED BY: KRK  
 CHECKED BY: DJK