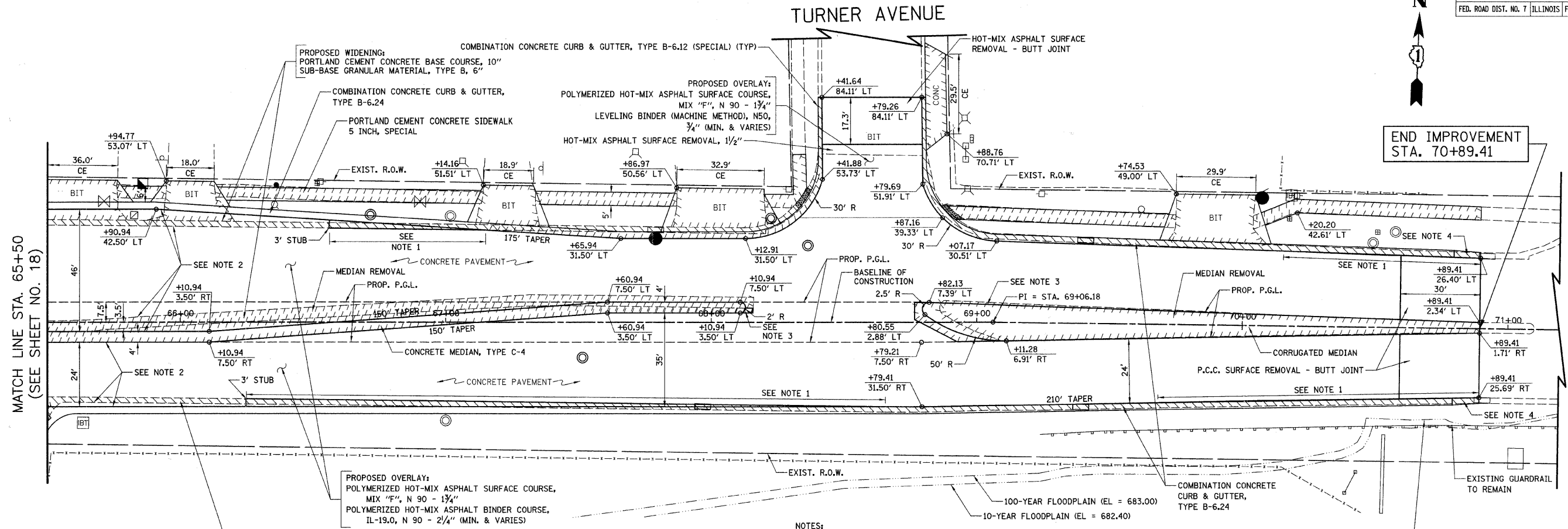


F.A.U. RTE.	SECTION	COUNTY	TOTAL SHEETS	SHEET NO.
1346 & 2626	05-00050-00-CH	COOK/DUPAGE	94	19
STA. 65+50	TO STA. 70+85			
FED. ROAD DIST. NO. 7 ILLINOIS FED. AID PROJECT M-8003(569)				



EXIST. ELEVATION ALONG BASELINE	PROP. P.G.L. ELEVATION - EB/WB	PROPOSED P.G.L. - WESTBOUND	PROPOSED P.G.L. - EASTBOUND	ELEVATION
686.07	686.66/686.69	686.66	686.69	686.675
686.22	686.77/686.79	686.77	686.79	686.78
686.58	686.88/686.89	686.88	686.89	686.885
686.40	686.95/686.96	686.95	686.96	686.955
686.46	686.98/686.98	686.98	686.98	686.98
686.45	686.96/686.96	686.96	686.96	686.955
686.37	686.89/686.89	686.89	686.89	686.885
686.27	686.78/686.78	686.78	686.78	686.775
686.18	686.64/686.64	686.64	686.64	686.635
686.03	686.50/686.50	686.50	686.50	686.495
685.91	686.36/686.36	686.36	686.36	686.355
685.74	686.22/686.22	686.22	686.22	686.215
685.56	686.08/686.08	686.08	686.08	686.075
685.43	685.94/685.94	685.94	685.94	685.935
685.37	685.80/685.80	685.80	685.80	685.795
685.07	685.66/685.66	685.66	685.66	685.655
685.21	685.52/685.52	685.52	685.52	685.515
685.05	685.38/685.38	685.38	685.38	685.375
684.90	685.19/685.19	685.19	685.19	685.185
684.75	684.92/684.92	684.92	684.92	684.915
684.59	684.65/684.65	684.65	684.65	684.645

DEVON AVENUE

END IMPROVEMENT STA. 70+89.41

ILLINOIS DEPARTMENT OF TRANSPORTATION
PROPOSED PLAN AND PROFILE
DEVON AVENUE
 STA. 65+50 TO STA. 70+85

HORIZ.: 20
 VERT.: 5

SCALE IN FEET

DATE: 5/27/08
 DESIGNED BY: KRK
 CHECKED BY: DJK