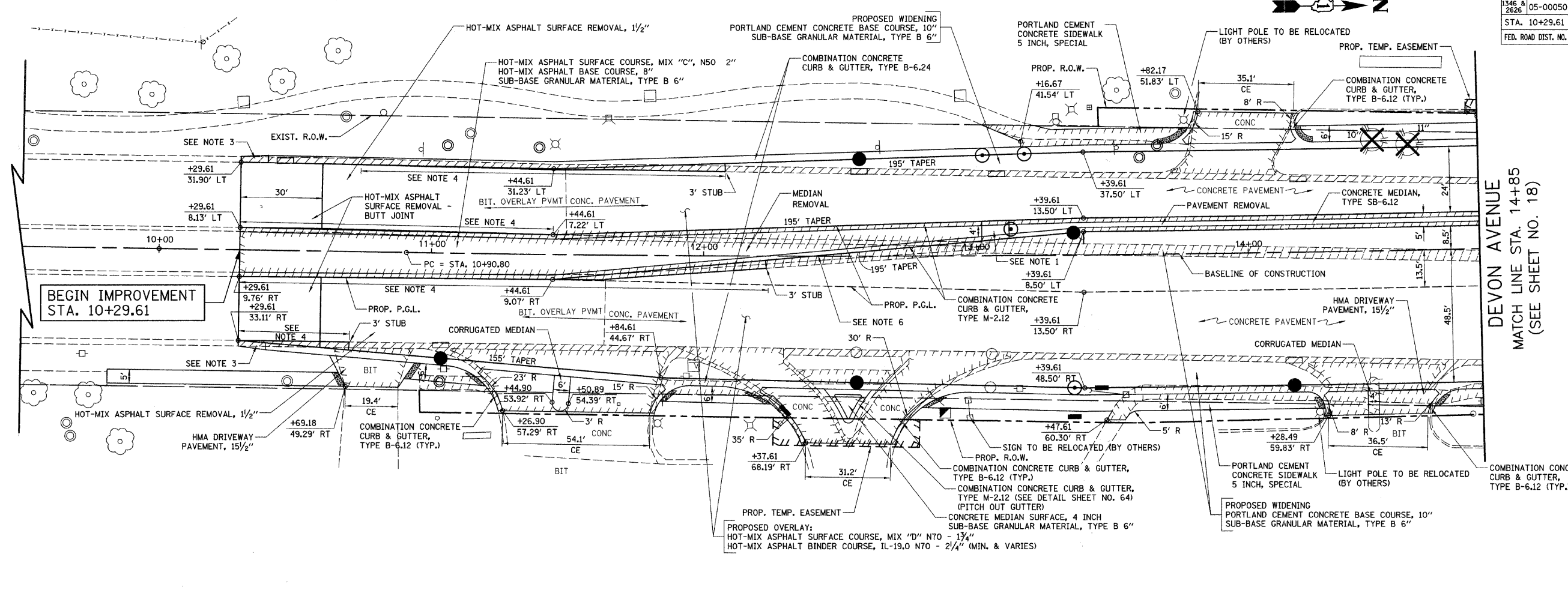


F.A.U. RTE.	SECTION	COUNTY	TOTAL SHEETS	SHEET NO.
1346 & 2626	05-00050-00-CH	COOK/DUPAGE	94	20
STA. 10+29.61		TO STA. 14+85		
FED. ROAD DIST. NO. 7		ILLINOIS	FED. AID PROJECT M-8003569	



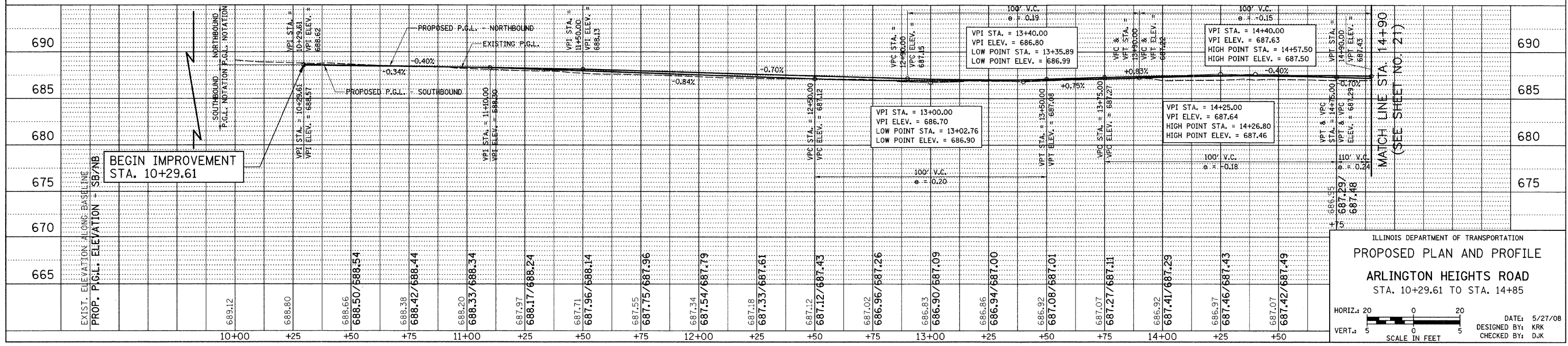
DEVON AVENUE
MATCH LINE STA. 14+85
(SEE SHEET NO. 18)

BEGIN IMPROVEMENT
STA. 10+29.61

NOTES:

- 10' RAMPED MEDIAN TRANSITION SHALL BE PAID FOR AS "CONCRETE MEDIAN, TYPE SB-6.12".
- SEE TYPICAL SECTIONS AND CCHD DETAIL (SHEET NO. 75) FOR LOCATIONS OF PROPOSED TIE BARS.
- TRANSITION CURB FROM B-6.24 TO B-6.18 OVER 10'. PAID FOR AS "COMBINATION CONCRETE CURB AND GUTTER, TYPE B-6.24".
- CONSTRUCT BASE COURSE MONOLITHICALLY WITH CURB AND GUTTER. SEE DETAIL SHEET NO. 64.
- WHEN REMOVING THE EXISTING CURB AND GUTTER FROM PAVEMENT TO REMAIN, THE CONTRACTOR SHALL SAW CUT THE EXISTING CURB AND GUTTER TO SEVER THE EXISTING TIE BARS TO MAINTAIN A CLEAN, VERTICAL EDGE. THIS WORK SHALL BE INCLUDED IN THE COST OF "COMBINATION CURB AND GUTTER REMOVAL".
- BEGIN CROWN BETWEEN TURN LANES AT STA. 12+42.08. (LOCATION WHERE TURN LANE WIDTH EQUALS 11')

ARLINGTON HEIGHTS ROAD



MATCH LINE STA. 14+90
(SEE SHEET NO. 21)

ILLINOIS DEPARTMENT OF TRANSPORTATION
PROPOSED PLAN AND PROFILE
ARLINGTON HEIGHTS ROAD
STA. 10+29.61 TO STA. 14+85

