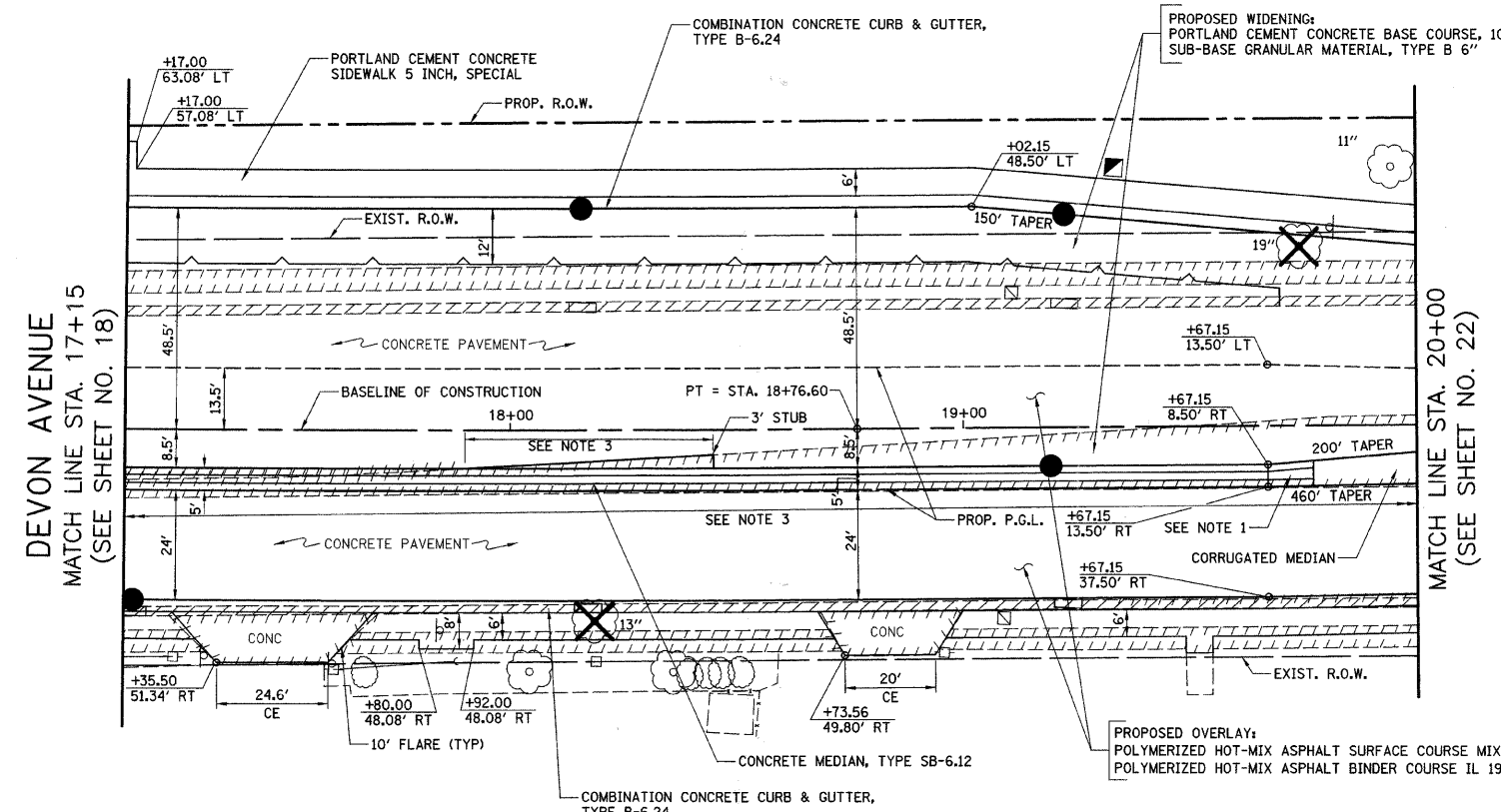


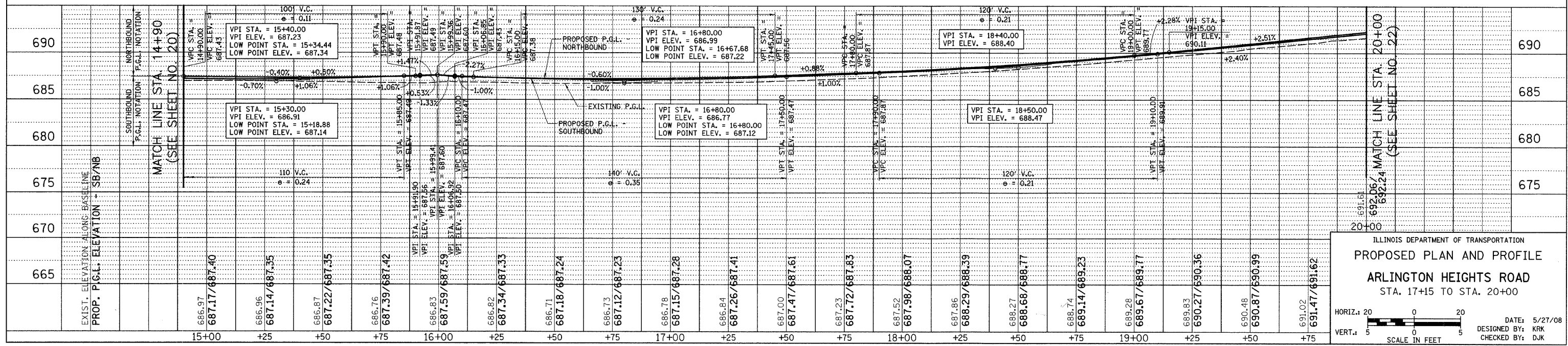
F.A.U. R.T.E.	SECTION	COUNTY	TOTAL SHEETS	SHEET NO.
1346 & 2626	05-00050-00-CH	COOK/DUPAGE	94	21
STA. 17+15		TO STA. 20+00		
FED. ROAD DIST. NO. 7 ILLINOIS FED. AID PROJECT M-8003(569)				



NOTES:

- 10' RAMPED MEDIAN TRANSITION SHALL BE PAID FOR AS "CONCRETE MEDIAN, TYPE SB-6.12".
- SEE TYPICAL SECTIONS AND CCHD DETAIL (SHEET NO. 75) FOR LOCATIONS OF PROPOSED TIE BARS.
- CONSTRUCT BASE COURSE MONOLITHICALLY WITH MEDIAN. SEE DETAIL SHEET NO. 64.
- WHEN REMOVING THE EXISTING CURB AND GUTTER FROM PAVEMENT TO REMAIN, THE CONTRACTOR SHALL SAW CUT THE EXISTING CURB AND GUTTER TO SEVER THE EXISTING TIE BARS TO MAINTAIN A CLEAN, VERTICAL EDGE. THIS WORK SHALL BE INCLUDED IN THE COST OF "COMBINATION CURB AND GUTTER REMOVAL".

ARLINGTON HEIGHTS ROAD



ILLINOIS DEPARTMENT OF TRANSPORTATION
PROPOSED PLAN AND PROFILE
 ARLINGTON HEIGHTS ROAD
 STA. 17+15 TO STA. 20+00

HORIZ.: 20
 VERT.: 5

SCALE IN FEET

DATE: 5/27/08
 DESIGNED BY: KRK
 CHECKED BY: DJK