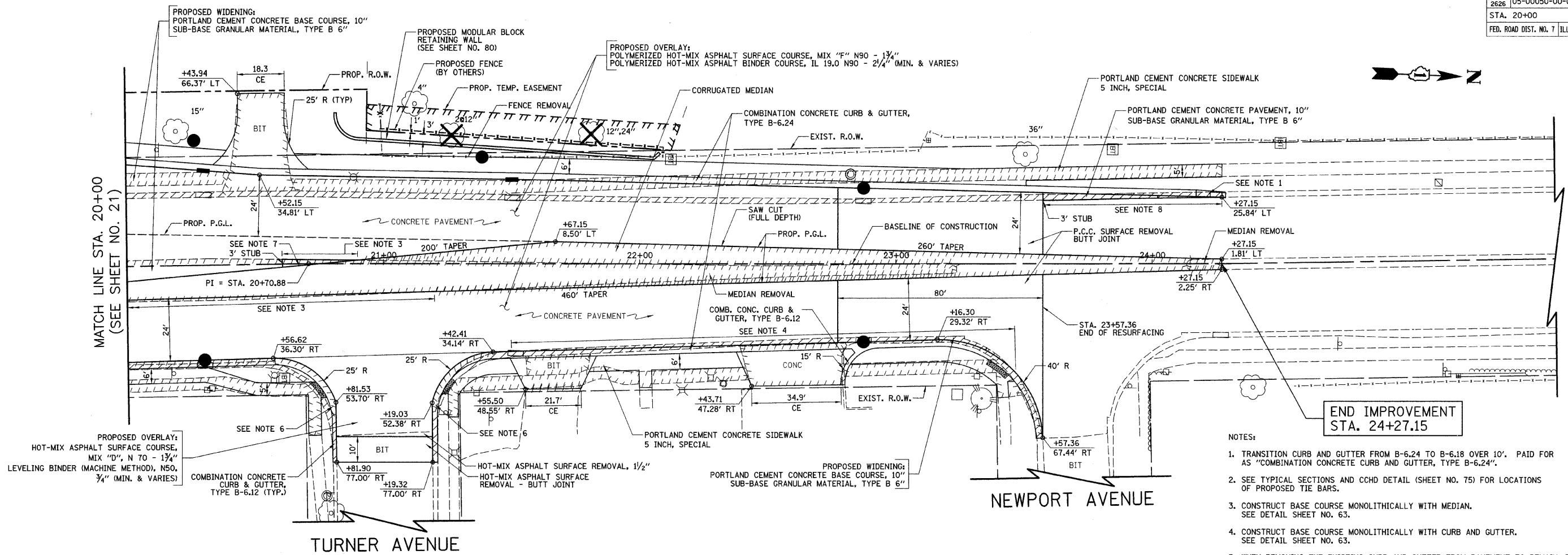
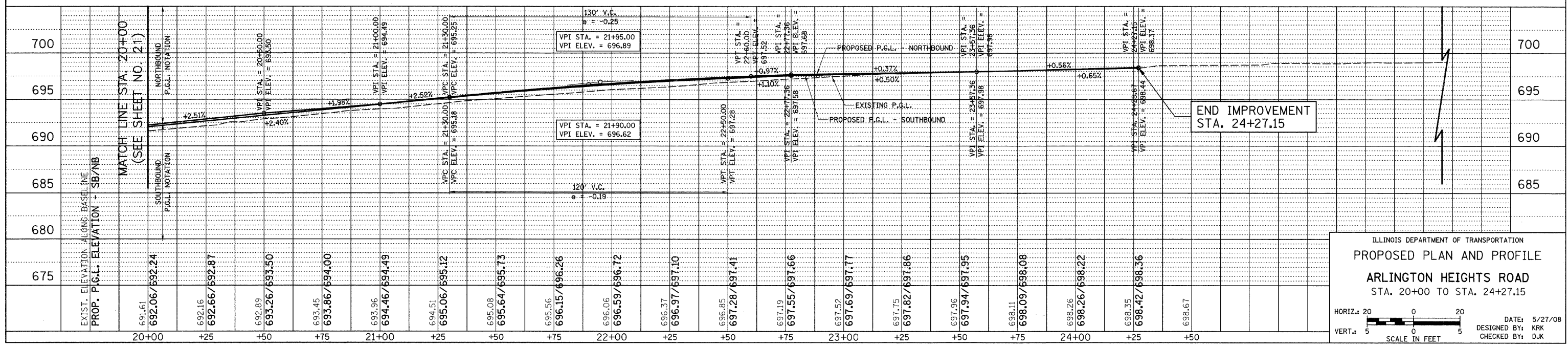


F.A.U. RTE.	SECTION	COUNTY	TOTAL SHEETS	SHEET NO.
1346 & 2626	05-00050-00-CH	COOK/DUPAGE	94	22
STA. 20+00		TO STA. 24+27.15		
FED. ROAD DIST. NO. 7 ILLINOIS FED. AID PROJECT M-8003(569)				



- NOTES:
1. TRANSITION CURB AND GUTTER FROM B-6.24 TO B-6.18 OVER 10'. PAID FOR AS "COMBINATION CONCRETE CURB AND GUTTER, TYPE B-6.24".
  2. SEE TYPICAL SECTIONS AND CCHD DETAIL (SHEET NO. 75) FOR LOCATIONS OF PROPOSED TIE BARS.
  3. CONSTRUCT BASE COURSE MONOLITHICALLY WITH MEDIAN. SEE DETAIL SHEET NO. 63.
  4. CONSTRUCT BASE COURSE MONOLITHICALLY WITH CURB AND GUTTER. SEE DETAIL SHEET NO. 63.
  5. WHEN REMOVING THE EXISTING CURB AND GUTTER FROM PAVEMENT TO REMAIN, THE CONTRACTOR SHALL SAW CUT THE EXISTING CURB AND GUTTER TO SEVER THE EXISTING TIE BARS TO MAINTAIN A CLEAN, VERTICAL EDGE. THIS WORK SHALL BE INCLUDED IN THE COST OF "COMBINATION CURB AND GUTTER REMOVAL".
  6. TRANSITION CURB AND GUTTER FROM B-6.24 TO B-6.12 OVER 10 FEET. PAID FOR AS "COMBINATION CONCRETE CURB AND GUTTER, TYPE B-6.24".
  7. END CROWN BETWEEN TURN LANES AT STA. 20+67.15. (LOCATION WHERE TURN LANE WIDTH EQUALS 11')
  8. CONSTRUCT P.C.C. PAVEMENT MONOLITHICALLY WITH CURB AND GUTTER.

ARLINGTON HEIGHTS ROAD



ILLINOIS DEPARTMENT OF TRANSPORTATION  
**PROPOSED PLAN AND PROFILE**  
**ARLINGTON HEIGHTS ROAD**  
 STA. 20+00 TO STA. 24+27.15

HORIZ.: 20  
 VERT.: 5

SCALE IN FEET

DATE: 5/27/08  
 DESIGNED BY: KRK  
 CHECKED BY: DJK