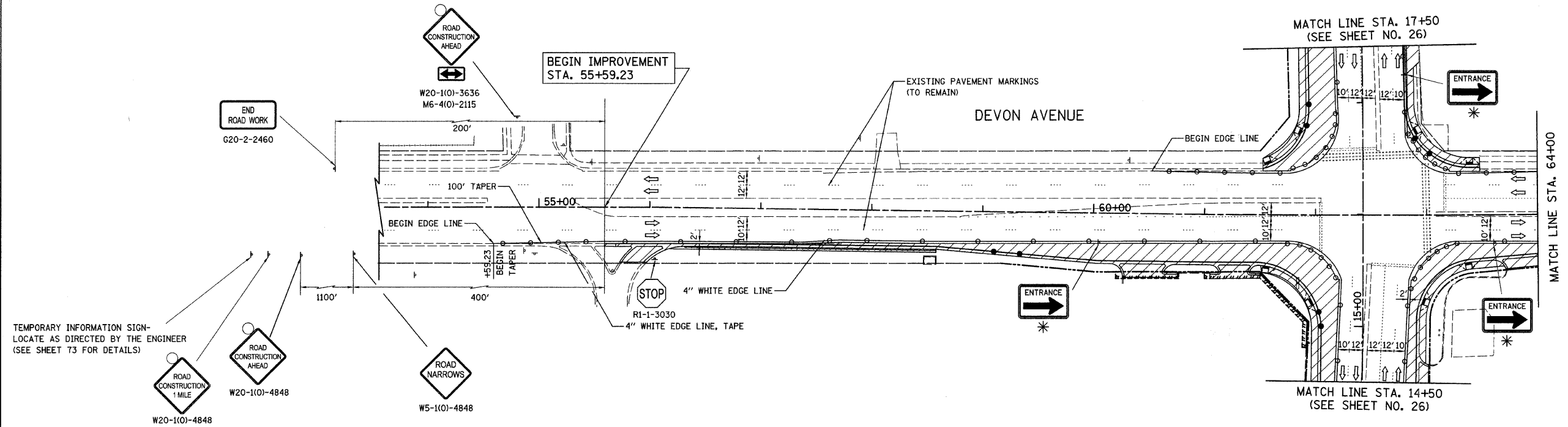
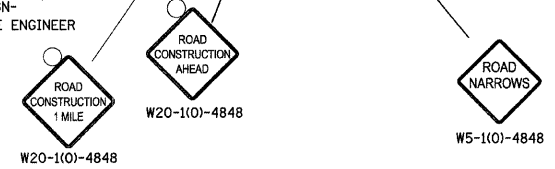


F.A.U. NO.	SECTION	COUNTY	TOTAL SHEETS	SHEET NO.
1346 & 2826	05-00050-00-CH	COOK/DUPAGE	94	25
MAINTENANCE OF TRAFFIC - STAGE 1				
FED. ROAD DIST. NO. 7   ILLINOIS   FED. AID PROJECT M-80031569				

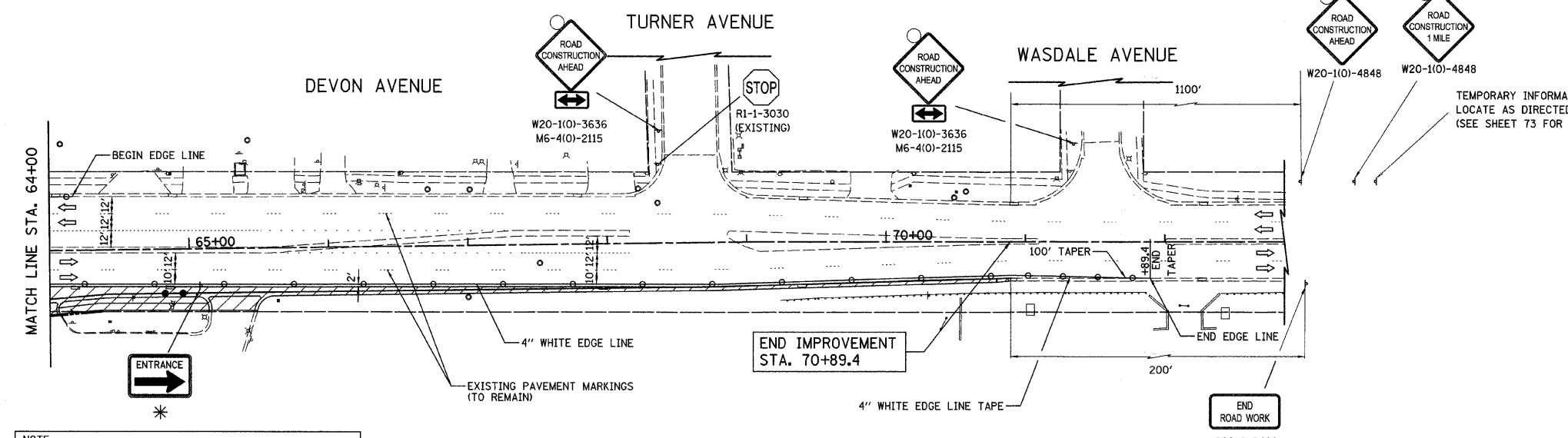


TEMPORARY INFORMATION SIGN-LOCATE AS DIRECTED BY THE ENGINEER (SEE SHEET 73 FOR DETAILS)



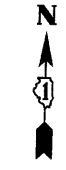
**LEGEND**

- TYPE II DRUM
- ⇒ DIRECTION OF TRAFFIC
- ⊥ TEMPORARY TRAFFIC SIGN ON PERMANENT SUPPORT
- ⊥ TYPE III BARRICADE
- ▨ WORK ZONE



**NOTE:**  
AT THE SPEEDWAY GAS STATION AND MOBIL GAS STATION, AT LEAST ONE DRIVEWAY ON DEVON AVENUE SHALL REMAIN OPEN AT ALL TIMES.

- NOTE:**
- ALL TEMPORARY PAVEMENT MARKINGS SHALL BE PAINT UNLESS OTHERWISE NOTED.
  - ALL TAPE PAVEMENT MARKINGS SHALL BE PAID FOR AS "PAVEMENT MARKING TAPE, TYPE III".
  - ADDITIONAL SIGNS WILL BE REQUIRED FOR LANE CLOSURES WHICH ARE NOT SHOWN ON THE PLANS BUT WILL BE REQUIRED AS PER I.D.O.T. STANDARD 701701.
- \* SEE SHEET NO. 74 FOR SIGN DETAILS.



ILLINOIS DEPARTMENT OF TRANSPORTATION  
**MAINTENANCE OF TRAFFIC PLAN**  
**DEVON AVENUE**  
**STAGE 1**

50 0 50  
SCALE IN FEET

DATE: 5/27/08  
DESIGNED BY: BLG  
CHECKED BY: DJK