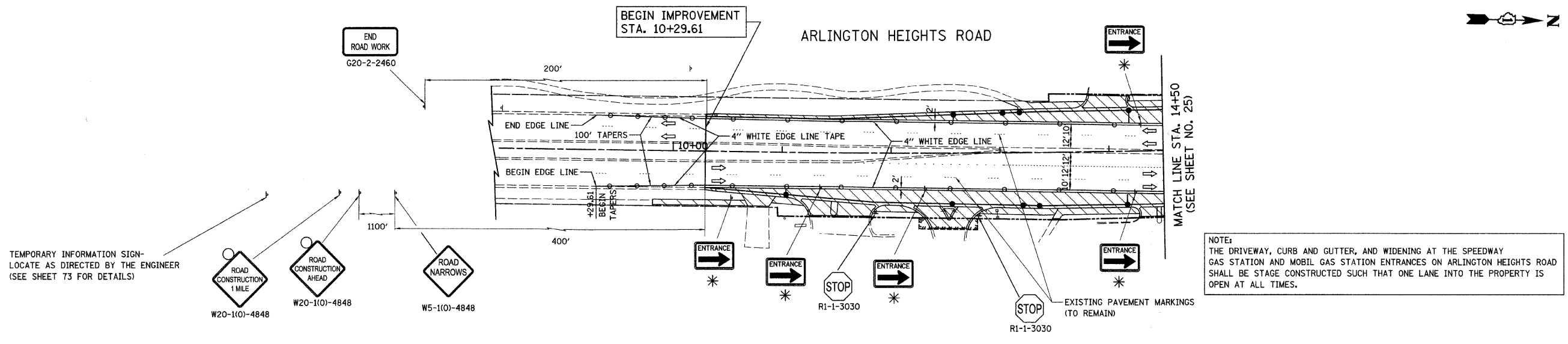
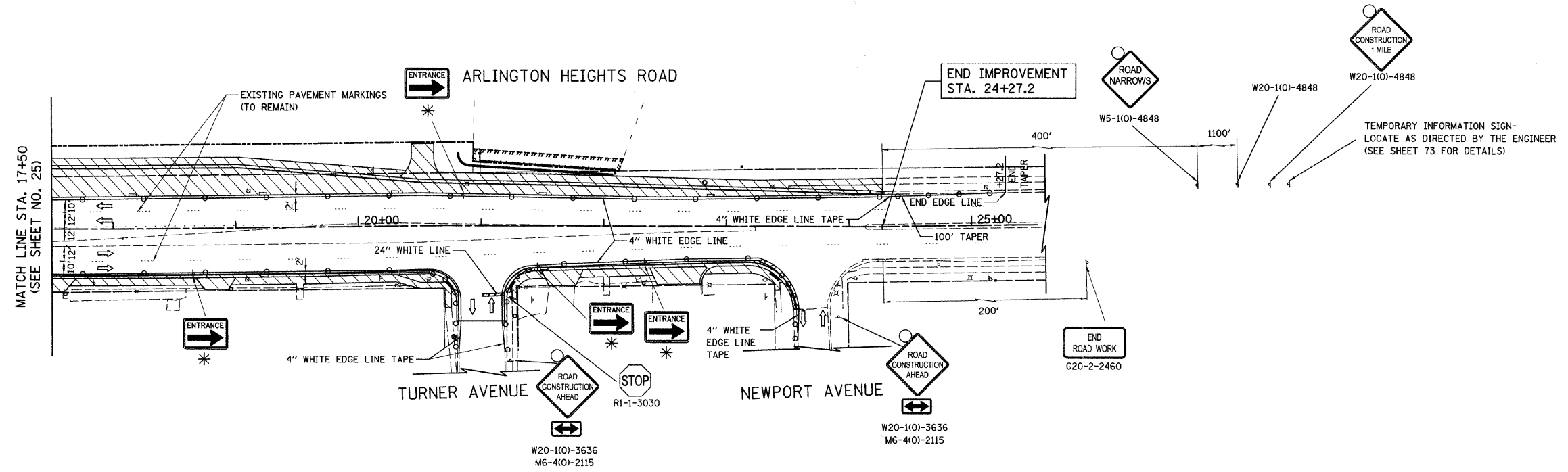


F.A.U. RTE.	SECTION	COUNTY	TOTAL SHEETS	SHEET NO.
1346 & 2626	105-00050-00-CH	COOK/DUPAGE	94	26
MAINTENANCE OF TRAFFIC - STAGE 1				
FED. ROAD DIST. NO. 7 ILLINOIS FED. AID PROJECT M-8003(569)				



NOTE:
THE DRIVEWAY, CURB AND GUTTER, AND WIDENING AT THE SPEEDWAY GAS STATION AND MOBIL GAS STATION ENTRANCES ON ARLINGTON HEIGHTS ROAD SHALL BE STAGE CONSTRUCTED SUCH THAT ONE LANE INTO THE PROPERTY IS OPEN AT ALL TIMES.



ILLINOIS DEPARTMENT OF TRANSPORTATION
MAINTENANCE OF TRAFFIC PLAN
ARLINGTON HEIGHTS ROAD
STAGE 1

* SEE SHEET NO. 74 FOR SIGN DETAILS

50 0 50
SCALE IN FEET

DATE: 5/27/08
DESIGNED BY: BLG
CHECKED BY: DJK