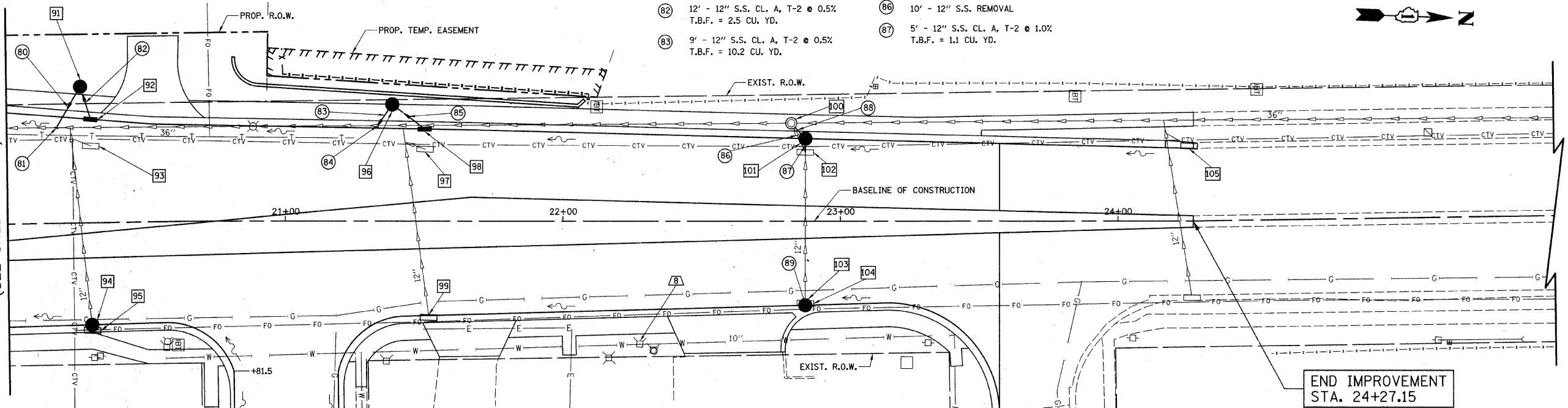


F.A.U. RTE.	SECTION	COUNTY	TOTAL SHEETS	SHEET NO.
1346 & 2626	05-00050-00-CH	COOK/DUPAGE	94	36
STA. 20+00		TO STA. 24+27.2		
FED. ROAD DIST. NO. 7		ILLINOIS	FED. AID PROJECT M-8003(569)	

- (80) 17' - 12" S.S. CL. A, T-2 @ 0.5%
T.B.F. = 19.2 CU. YD.
- (81) CONNECT TO EXISTING PIPE
SEE DETAIL SHEET 62
INV = 684.10 (12")
INV = 682.55 (36")
- (82) 12' - 12" S.S. CL. A, T-2 @ 0.5%
T.B.F. = 2.5 CU. YD.
- (83) 9' - 12" S.S. CL. A, T-2 @ 0.5%
T.B.F. = 10.2 CU. YD.
- (84) CONNECT TO EXISTING PIPE
SEE DETAIL SHEET 62
INV = 685.80 (12")
INV = 684.29 (36")
- (85) 15' - 12" S.S. CL. A, T-1 @ 0.5%
T.B.F. = 2.0 CU. YD.
- (86) 10' - 12" S.S. REMOVAL
- (87) 5' - 12" S.S. CL. A, T-2 @ 1.0%
T.B.F. = 1.1 CU. YD.
- (88) 7' - 12" S.S. CL. A, T-2 @ 1.0%
T.B.F. = 2.0 CU. YD.
- (89) 1' - 12" S.S. CL. A, T-2 @ 1.0%
T.B.F. = 0.3 CU. YD.

MATCH LINE STA. 20+00
(SEE SHEET NO. 35)



TURNER AVENUE

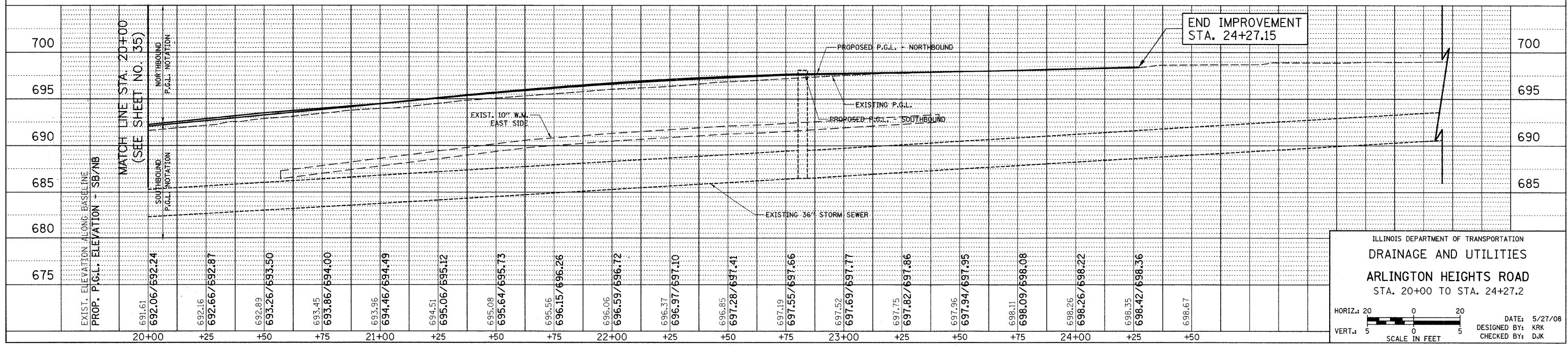
NEWPORT AVENUE

END IMPROVEMENT
STA. 24+27.15

- (91) STA. 20+26.00, 48.6' LT.
CB T-A, 4' DIA., T-1 FR., C.L.
RIM = 693.39
INV = 684.19 (12" SE)
INV = 689.36 (12" E)
- (92) STA. 20+30.00, 36.8' LT.
INLET T-A, T-24 F&G
RIM = 692.27
INV = 689.42 (12" W)
- (93) STA. 20+29.85, 27.3' LT.
INLET TO BE REMOVED
- (94) STA. 20+29.83, 36.7' RT.
CB T-A, 4' DIA., T-24 F&G
RIM = 692.51
INV = 686.79 (EX 12" W)
- (95) STA. 20+30.05, 36.7' RT.
INLET TO BE REMOVED
- (96) STA. 21+38.00, 41.5' LT.
CB T-A, 4' DIA., T-1 FR., C.L.
RIM = 695.39
INV = 685.85 (12" SE)
INV = 692.24 (12" NE)
(ROTATE FLAT TOP SO LID IS OUTSIDE OF SIDEWALK)
- (97) STA. 21+50.39, 25.5' LT.
INLET TO BE REMOVED
- (98) STA. 21+50.00, 32.8' LT.
INLET T-A, T-24 F&G
RIM = 695.16
INV = 692.31 (12" SW)
- (99) STA. 21+51.72, 34.6' RT.
INLET TO BE ADJUSTED
W/ NEW T-24 F&G
EX RIM = 694.79
PR RIM = 695.28
- (100) STA. 22+82.27, 34.9' LT.
MH TO BE RECONSTRUCTED
EX RIM = 698.10
PR RIM = 697.50
INV = 686.40 (EX 36" S)
INV = 686.40 (EX 36" N)
INV = 692.27 (12" NE)
- (101) STA. 22+87.37, 29.4' LT.
CB T-A, 4' DIA., T-24 F&G
RIM = 697.11
INV = 692.34 (12" SW)
INV = 692.88 (12" E)
- (102) STA. 22+87.37, 24.5' LT.
REMOVING INLET TO MAINTAIN FLOW
INV = 692.90 (12" E)
- (103) STA. 22+87.35, 30.1' RT.
CB T-A, 4' DIA., T-24 F&G
RIM = 697.20
INV = 692.95 (12" W)
- (104) STA. 22+87.43, 29.4' RT.
INLET TO BE REMOVED
- (105) STA. 24+25.69, 26.7' LT.
INLET TO BE ADJUSTED
EX RIM = 698.06
PR RIM = 698.06
- (B) STA. 22+27.75, 44.00' RT.
VALVE BOX TO BE ADJUSTED
EX RIM = 696.93
PR RIM = 696.90

ARLINGTON HEIGHTS ROAD

END IMPROVEMENT
STA. 24+27.15



ILLINOIS DEPARTMENT OF TRANSPORTATION
DRAINAGE AND UTILITIES
ARLINGTON HEIGHTS ROAD
STA. 20+00 TO STA. 24+27.2

HORIZ.: 20
VERT.: 5

SCALE IN FEET

DATE: 5/27/08
DESIGNED BY: KRK
CHECKED BY: DJK