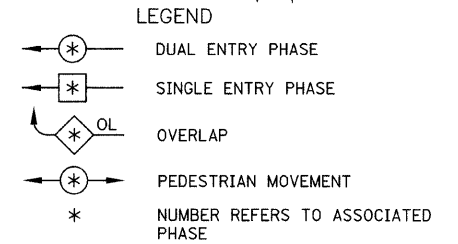
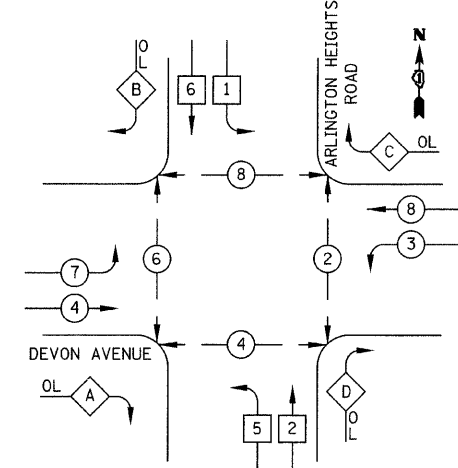


F.A.U. RTE.	SECTION	COUNTY	TOTAL SHEETS	SHEET NO.
1346 & 2626	05-00050-00-CH	COOK/DUPAGE	94	44
CABLE PLAN AND SEQUENCE OF OPERATIONS				
FED. ROAD DIST. NO. 7 ILLINOIS FED. AID PROJECT M-8003(569)				

CABLE PLAN LEGEND

- |          |          |   |
|----------|----------|---|
| EXISTING | PROPOSED |   |
|          |          | 8" (200mm) TRAFFIC SIGNAL SECTION   |
|          |          | 12" (300mm) TRAFFIC SIGNAL SECTION  |
|          |          | 12" (300mm) PEDESTRIAN SIGNAL SECTION   |
|          |          | 12" (300mm) PEDESTRIAN SIGNAL SECTION   |
|          |          | CONTROLLER CABINET  |
|          |          | SERVICE INSTALLATION  |
|          |          | TELEPHONE CONNECTION  |
|          |          | MAGNETIC DETECTOR   |
|          |          | EMERGENCY VEHICLE LIGHT DETECTOR  |
|          |          | CONFIRMATION BEACON   |
|          |          | PUSHBUTTON DETECTOR   |
|          |          | VEHICLE DETECTOR, INDUCTION LOOP  |
|          |          | DENOTES NUMBER OF CONDUCTORS, ALL CABLE NO. 14 EXCEPT AS INDICATED. ALL LOOP DETECTOR CABLE TO BE SHIELDED. |
|          |          | MICROWAVE VEHICLE SENSOR  |
|          |          | SIGNAL FACE WITH BACKPLATE, "P" INDICATES PROGRAMMED HEAD   |
|          |          | RAILROAD CONTROL CABINET  |
|          |          | ILLUMINATED SIGN "NO LEFT TURN"   |
|          |          | ILLUMINATED SIGN "NO RIGHT TURN"  |
|          |          | GROUND ROD AT HANDHOLE (H), DOUBLE HANDHOLE (H), OR CONTROLLER (C).   |
|          |          | GROUND ROD AT POST (P), OR MAST ARM POLE (MA).  |
|          |          | GROUND ROD AT ELECTRIC SERVICE INSTALLATION   |
|          |          | GROUND CABLE IN CONDUIT NO. 6 SOLID COPPER (GREEN)  |
|          |          | FIBER OPTIC CABLE IN CONDUIT NO. 62.5/125 2-MM12F SM12F   |
|          |          | UNINTERRUPTIBLE POWER SUPPLY  |

PROPOSED CONTROLLER SEQUENCE

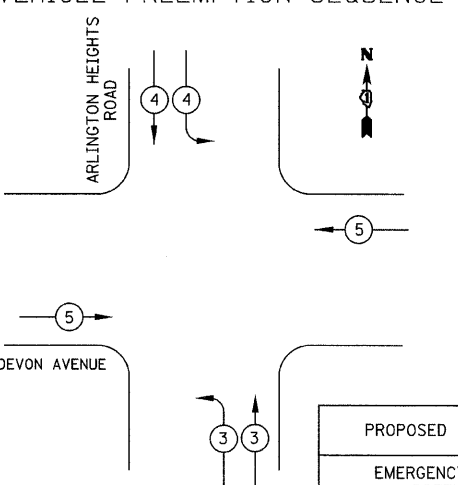


PHASE DESIGNATION DIAGRAM

RIGHT TURN OVERLAP PHASE DESIGNATION

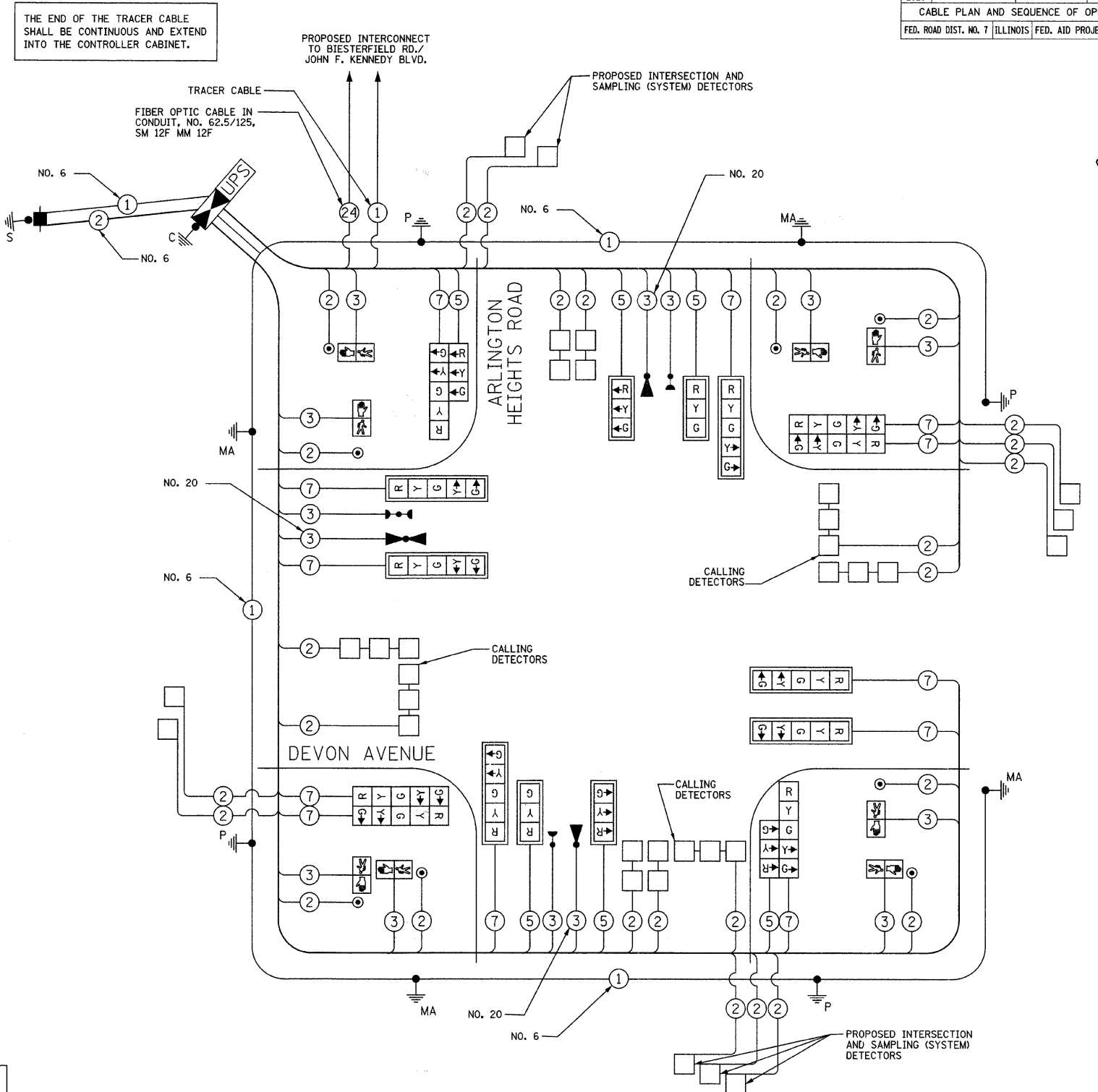
OVERLAP LETTER	PERMISSIVE PHASE	PROTECTED PHASE
A	= 2 +	3
B	= 4 +	5
C	= 6 +	7
D	= 8 +	1

PROPOSED EMERGENCY VEHICLE PREEMPTION SEQUENCE



PROPOSED EMERGENCY VEHICLE PREEMPTORS

EMERGENCY VEHICLE PREEMPTOR	3	4	5
MOVEMENT			



TRAFFIC SIGNAL INSTALLATION ELECTRICAL SERVICE REQUIREMENTS

TYPE	NO. LAMPS	WATTAGE INCAND.	WATTAGE LED	% OPERATION	TOTAL WATTAGE
SIGNAL (RED)	14		17	50	119
(YELLOW)	14		25	25	88
(GREEN)	14		15	25	53
ARROW	16		12	10	19
PED SIGNAL	8		25	100	200
CONTROLLER	1		100	100	100
FLASHER				50	
TOTAL =					579

FOUNDATION (DEPTH)	FT. (m)	CABLE SLACK	FT. (m)	VERTICAL	FT. (m)
TYPE A - POST	4 (1.2)	HANDHOLE	6.5 (2.0)	ALL FOUNDATIONS	3.5 (2.0)
D- CONTROLLER	4 (1.2)	DOUBLE HANDHOLE	13 (4.0)	MAST ARM (L) POLE	20'+L-2'=(6m+L-0.6m)=
E- M. ARM POLE		SIGNAL POST	2 (1.0)	BRACKET MOUNTED	13 (4.0)
24" (600mm)	10 (3.0)	CONTROLLER CAB.	1 (0.5)	PED. PUSHBUTTON	4 (1.2)
30" (750mm)	15 (4.6)	FIBER OPTIC	13 (4.0)	ELECTRIC SERVICE	13.5 (4.1)
36" (900mm)	15 (4.6)	ELECTRIC SERVICE	1 (0.5)	SERVICE TO GROUND	13.5 (4.1)
		GROUND CABLE	1 (0.5)	POST MOUNTED	6 (1.8)

ENERGY COSTS TO: VILLAGE OF ELK GROVE  
901 WELLINGTON AVENUE  
ELK GROVE VILLAGE, IL 60007

ENERGY SUPPLY: CONTACT: JOHN STRYZAK  
PHONE: (630) 691-4363  
COMPANY: COM ED

NOTE:  
THE TRAFFIC SIGNAL CONTROLLER EQUIPMENT FOR THIS PROJECT SHALL BE "ECONOLITE" TO MATCH THE EXISTING ADJACENT SYSTEM.

ILLINOIS DEPARTMENT OF TRANSPORTATION  
CABLE PLAN AND SEQUENCE OF OPERATIONS  
DEVON AVENUE AND ARLINGTON HEIGHTS ROAD

SCALE: NONE

DATE: 5/27/08  
DESIGNED BY: JSH  
CHECKED BY: JUE