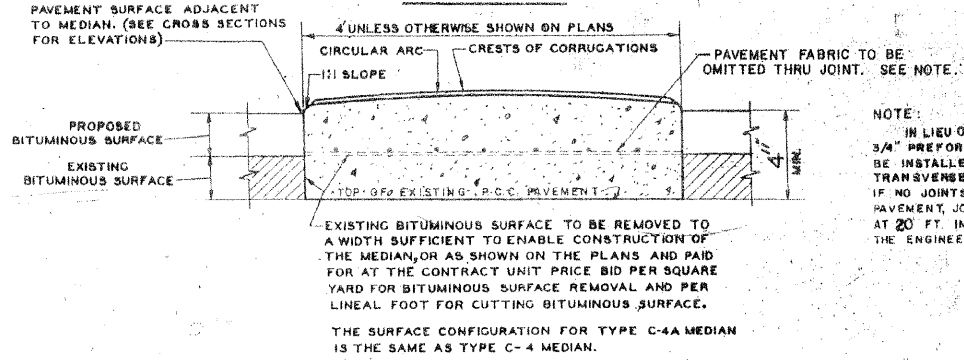


County	Fiscal Year	Sheet No.	Total Sheets
		76	94

05-00050-00-CH

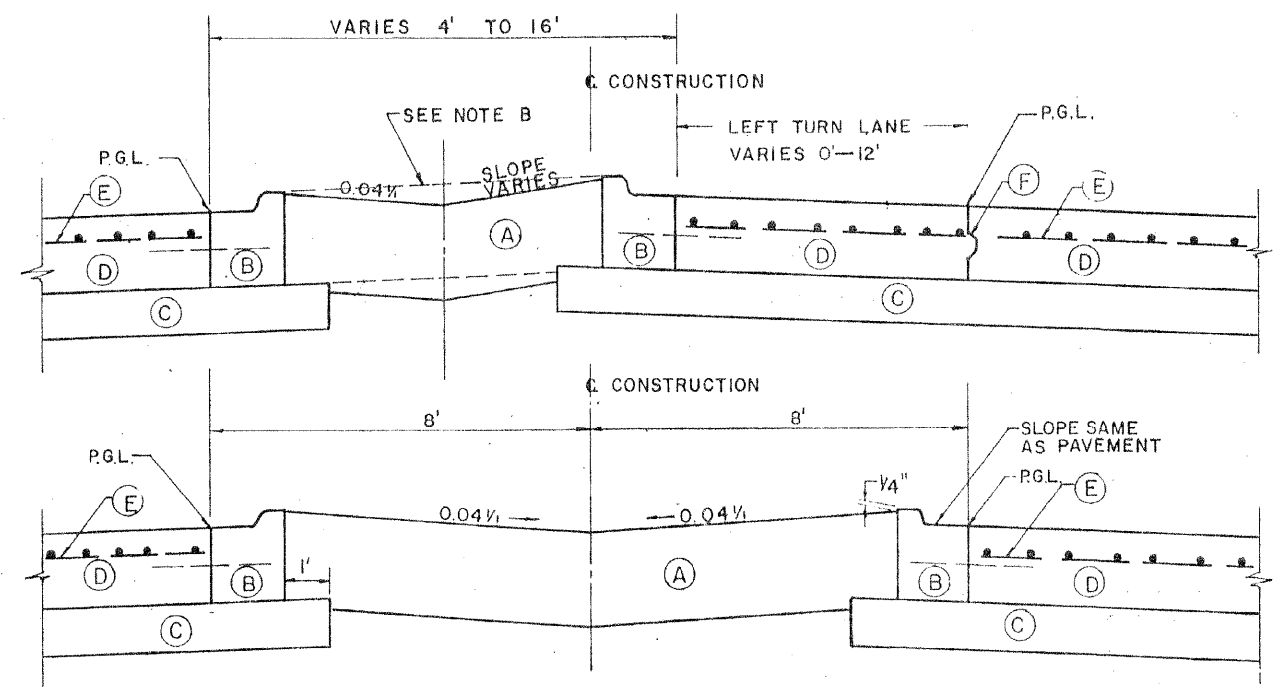
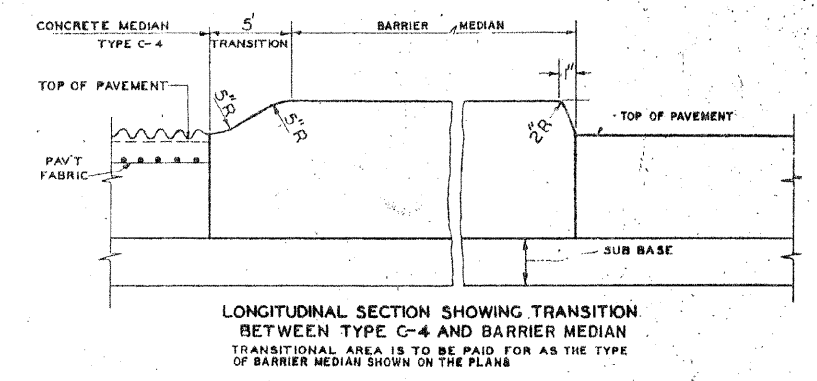
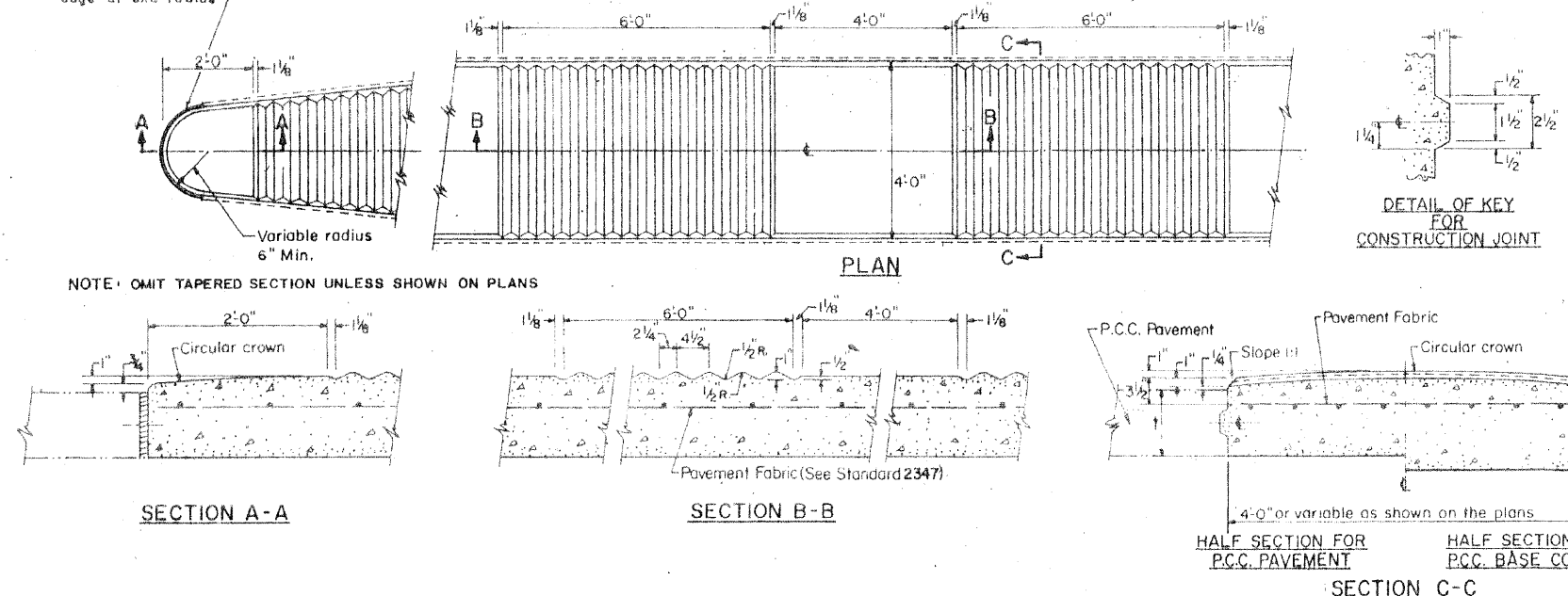
STANDARD DESIGN CONCRETE MEDIANS

TYPE C-4A



3/4" Preformed expansion joint filler between rigid pavement and median edge at end radius

TYPE C-4



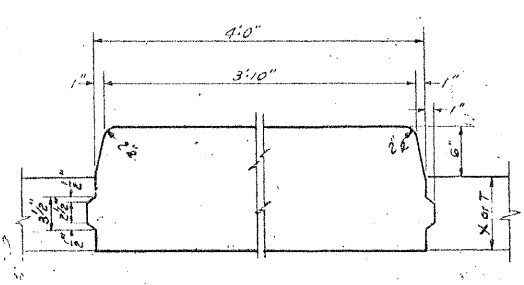
NOTE B: AT LOCATION NOTED ON PLANS THE MEDIAN SURFACE SHALL BE A STRAIGHT LINE FROM TOP OF CURB TO TOP OF CURB.

- (A) BITUMINOUS SHOULDERS (12 INCH)
- (B) COMBINATION CONCRETE CURB AND GUTTER, M-2.12
- (C) SUB-BASE GRANULAR MATERIAL, TYPE B (6 INCH)
- (D) PORTLAND CEMENT CONCRETE PAVEMENT (10 INCH)
- (E) PAVEMENT FABRIC
- (F) CONSTRUCTION JOINT (FOR TYPE SEE PLANS)

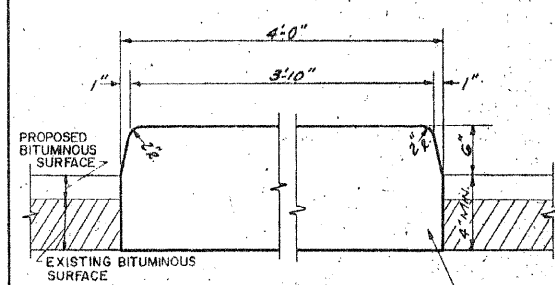
TYPE M-7

STATE OF ILLINOIS DEPARTMENT OF TRANSPORTATION		ISSUED 12-12-62	
PASSED May 29 1975		REVISIONS	
APPROVED May 29 1975		W.F. 8-27-68	
		W.F. 1-15-69	
		W.F. 10-1-69	
		D.W. 9-4-73	
		D.W. 10-31-74	
		D.W. 5-29-75	D.W. 7-15-77
Redrawn 8-27-68			

TYPE 6



TYPE 6 A



GENERAL NOTES

Dimension "t" is equal to the adjacent pavement edge thickness or base course edge thickness.

Dimension "x" is equal to the adjacent base course edge thickness plus the bituminous surface edge thickness.

The cost of furnishing and placing pavement fabric in the median shall be included in the unit price bid per square foot for CONCRETE MEDIAN, TYPE C-4 and TYPE C-4A respectively.

EXPANSION JOINTS - Shall be of a type similar to that in the adjacent pavement except dowel bars will not be required.

CONTRACTION JOINTS - Shall be constructed and sealed in the same manner as the joints in the adjacent pavement, or shall be constructed with a 3/4" preformed expansion joint filler conforming to the full cross-section of the median. Dowel Bars to be omitted in median joints.

The earth work shall be considered as being incidental to Earth Excavation.

Plan views of medians shown are typical. Median layout and radii shall be as shown on the plans. **NOT TO SCALE**

Medians may vary in width as required on the plans, but regardless of any width variation, shall be measured and paid for at the contract unit price per square foot for concrete median of the type specified.

The vertical edge dimension for Type C-4 Median shall be 10" when constructed adjacent to flexible pavement. Also, keyway shall be omitted and contraction joints shall be installed at 20' intervals.

Contraction and expansion joints shall be installed in Type C-4 median in prolongation with joints in adjacent P.C.C. Pavement. For median adjacent to bituminous surfaces, contraction joints shall be installed at 20' intervals.

COUNTY OF COOK
DEPARTMENT OF HIGHWAYS
GEORGE W. DUNNE
PRESIDENT

DETAILS OF CONCRETE MEDIANS

COMPUTED BY M.K.
DRAWN BY W.J.W.
CHECKED BY W.J.W.

APPROVED: [Signature]
[Signature]
[Signature]

Rev. 7-16-79 W.J.W.
Revised 5-27-70-L.O.S.
Revised 7-8-61 W.J.W.

(Full Size)

10-8A