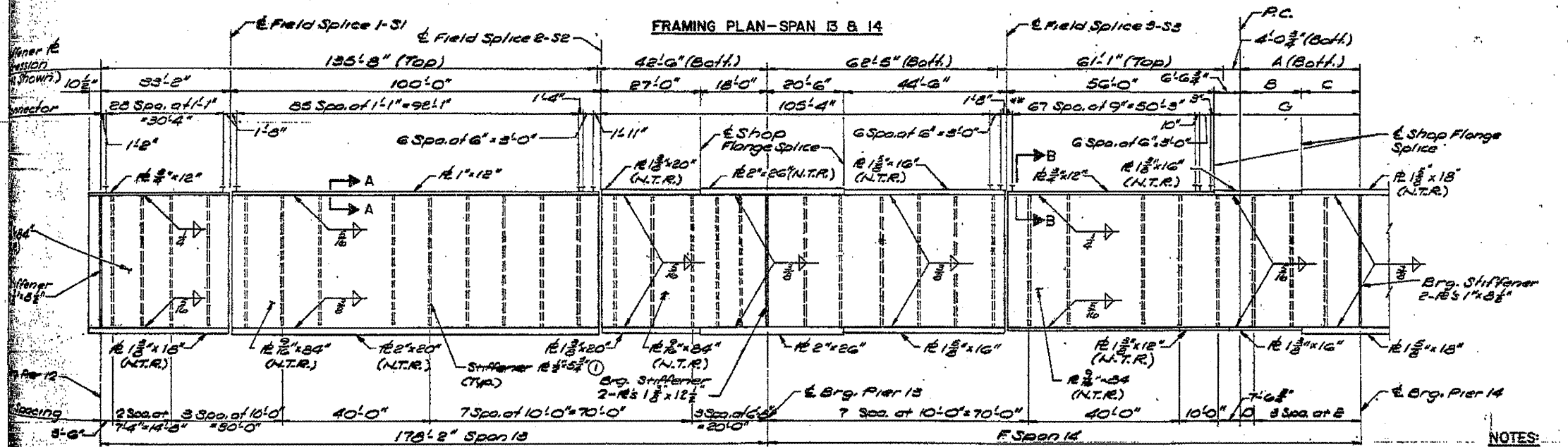
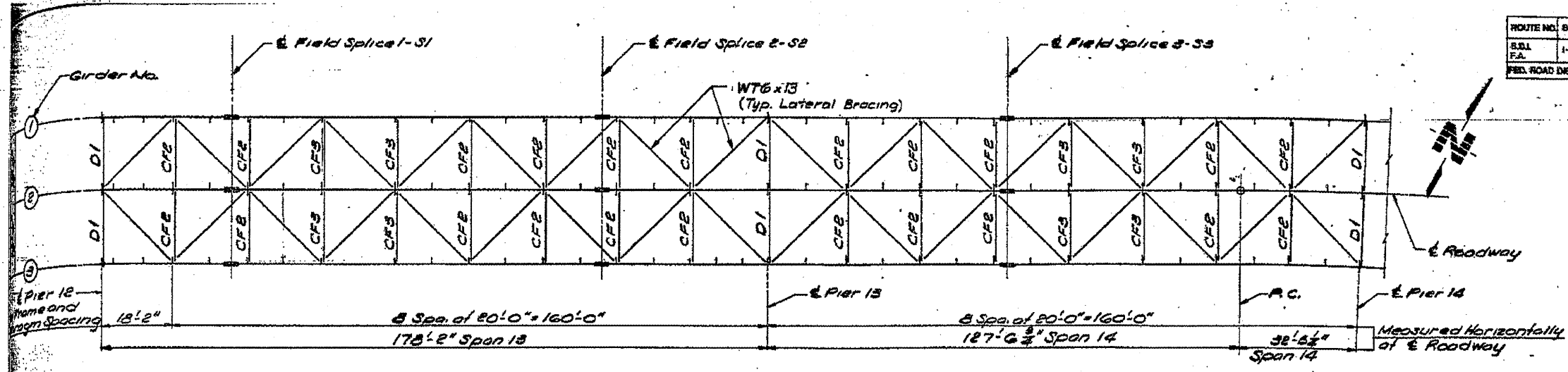
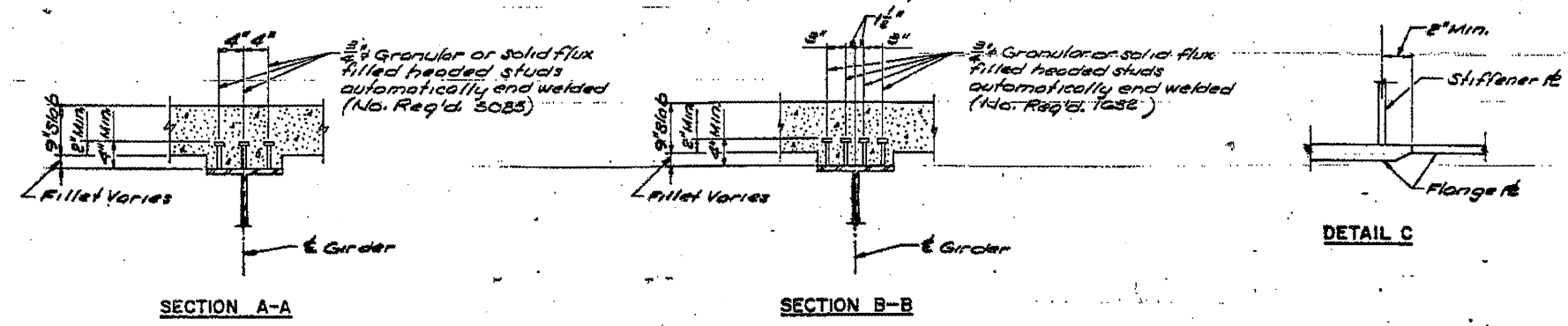


ROUTE NO.	SECTION	COUNTY	TOTAL SHEETS	SHEET NO.	SHEET NO.
1-28-1-3	ADAMS	ILLINOIS	159	125	66
FED. ROAD DIST. NO. 7					
FED. AID PROJECT BR-F-63					

DIM.	GIRDER NO.		
	1	2	3
A	32'-5 1/2"	32'-5 1/4"	32'-2 1/2"
B	16'-0 1/2"	16'-5 1/2"	16'-3 1/2"
C	16'-1 1/2"	16'-0"	15'-10 3/4"
D	2'-5 1/4"	2'-5 1/4"	2'-5 1/2"
E	10'-0 1/2"	10'-0"	9'-11 1/2"
F	160'-2 1/2"	160'-0"	159'-9 3/4"
G	37'-2 1/2"	39'-0"	38'-9 1/2"



- NOTES:**
- ① Intermediate Stiffeners shall be located on the inside face of Girders ① and ② and on either face of Girder ③.
 - Plates designated by (N.T.R.) shall conform to the Supplemental Requirements for Match Toughness (Zone 2). These components are the Tension Flanges, Webs, and all Splice Plate material of the Steel Girder.
 - * Weld Cross Frame Connection and Bearing Stiffener R's to top and/or bottom flanges, as detailed on Sheet 71.
 - * FOUR (4) Shear Connectors per row this area only.
 - For Shop Flange Splice Detail see Sheet U.B. See Detail C this Sheet for stiffener clearance of flange splice.



REV. NO.	DRAWN	CHKD.	APPL.	DESCRIPTION	DATE

**F A ROUTE 63 (U. S. ROUTE 24)
OVER MISSISSIPPI RIVER
QUINCY, ILLINOIS**

**EAST APPROACH - STEEL ALTERNATE
FRAMING PLAN AND GIRDER ELEVATION
SPANS 13 & 14**

EXISTING STEEL PLANS
FOR INFORMATION ONLY