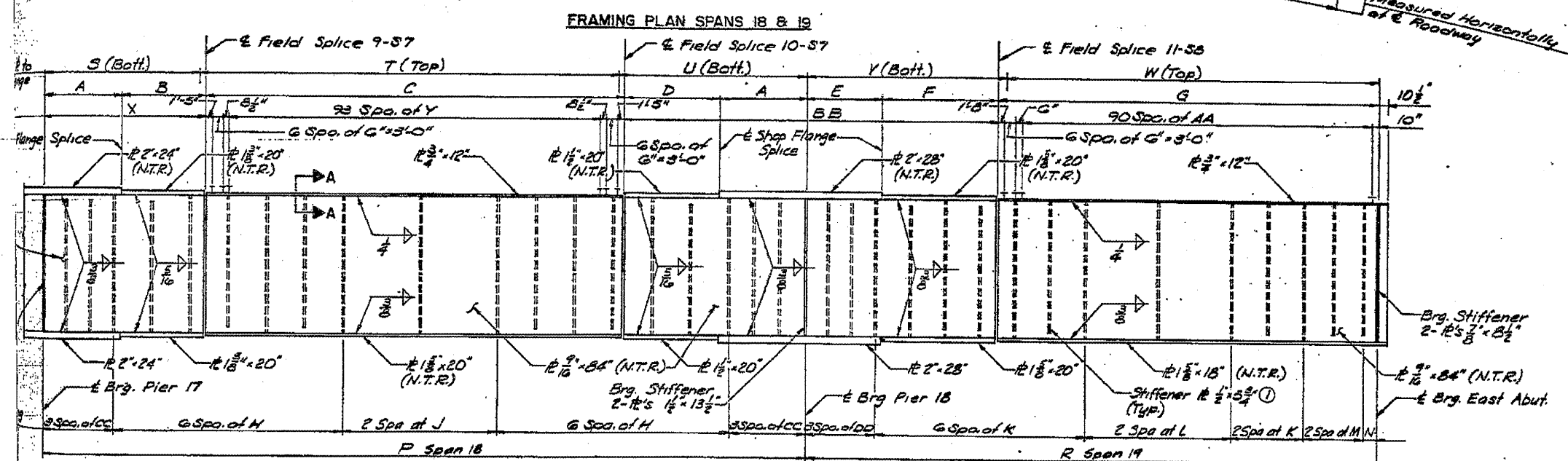
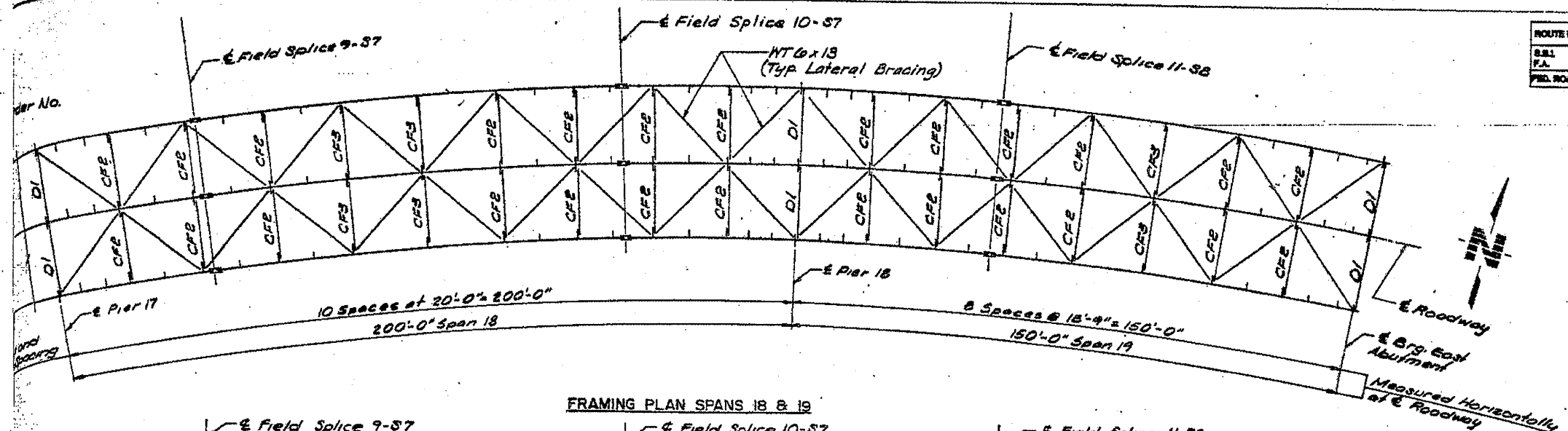
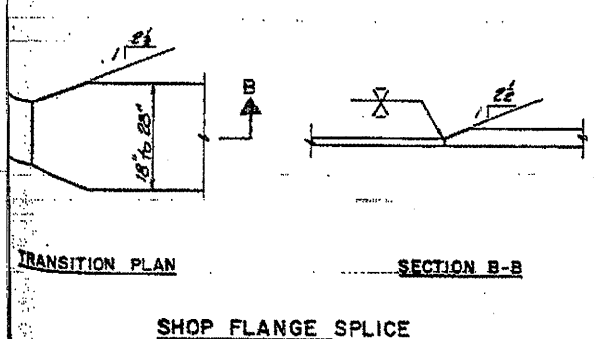


ROUTE NO.	SECTION	COUNTY	TOTAL SHEETS	SHEET NO.
1-28-1-3	ADAMS	ILLINOIS	159	127
FED. ROAD DIST. NO. 7		FED. AID PROJECT BR-F-621		SHEET NO. 128



GIRDER ELEVATION



GIRDER DIMENSIONS							
DIM.	GIRDER NO.			DIM.	GIRDER NO.		
	1	2	3		1	2	3
A	80'-7 1/2"	80'-6"	80'-4 1/2"	V	53'-7 1/2"	53'-3"	52'-0 3/8"
B	21'-7 1/2"	21'-6"	21'-4 1/2"	W	47'-5 1/2"	46'-9"	46'-0 3/8"
C	111'-9 3/8"	111'-0"	110'-2 3/8"	X	42'-3 3/8"	42'-0"	41'-8 3/8"
D	26'-8 3/4"	26'-6"	26'-3 3/4"	Y	7'-1 1/2"	7'-1"	7'-0 3/8"
E	20'-1 3/4"	20'-0"	19'-10 1/4"	AA	1'-0 1/2"	1'-0"	11'-9 3/8"
F	34'-2 3/8"	34'-0"	33'-9 3/8"	BB	101'-8 3/4"	101'-0"	100'-3 3/4"
G	96'-3 3/4"	96'-0"	95'-3 3/4"	CC	6'-8 3/4"	6'-8"	6'-7 1/4"
H	10'-0 3/8"	10'-0"	9'-11 1/8"	DD	6'-3 3/4"	6'-3"	6'-2 3/4"
J	20'-1 3/4"	20'-0"	19'-10 1/4"				
K	9'-5 3/4"	9'-5 1/2"	9'-5 1/4"				
L	18'-10 3/8"	18'-9"	18'-7 3/8"				
M	7'-8 3/4"	7'-7 1/2"	7'-6 3/4"				
N	3'-6 3/4"	3'-6"	3'-5 3/4"				
P	201'-5 3/4"	200'-0"	198'-6 1/4"				
R	151'-1"	150'-0"	148'-11"				
S	41'-5 3/4"	41'-0"	40'-8 3/4"				
T	104'-4 1/2"	103'-7"	102'-9 1/2"				
U	50'-9 1/2"	50'-5"	50'-0 3/8"				

**NOTES:**  
 ① Intermediate Stiffeners shall be located on the inside face of Girders ① and ②, and on either face of Girder ③. Plate designated by (N.T.R.) shall conform to the Supplemental Requirements for Match Toughness (Zone 2). These components are the Tension Flanges, Webs, and all Splice Plate material of the Steel Girder.  
 \* Weld Cross Frame Connection and Bearing Stiffener 1's to top and/or bottom flanges, as detailed on Sheet 71.  
 For Section A-A see Sheet 60.  
 For Stiffener clearance of flange splice, see Detail C Sheet 60.

REV. NO.	DRAWN	CHKD.	APPD.	DESCRIPTION	DATE
				F A ROUTE 63 (U. S. ROUTE 24) OVER MISSISSIPPI RIVER QUINCY, ILLINOIS	
EAST APPROACH - STEEL ALTERNATE					
FRAMING PLAN AND GIRDER ELEVATION					
SPANS 18 & 19					

EXISTING STEEL PLANS FOR INFORMATION ONLY

