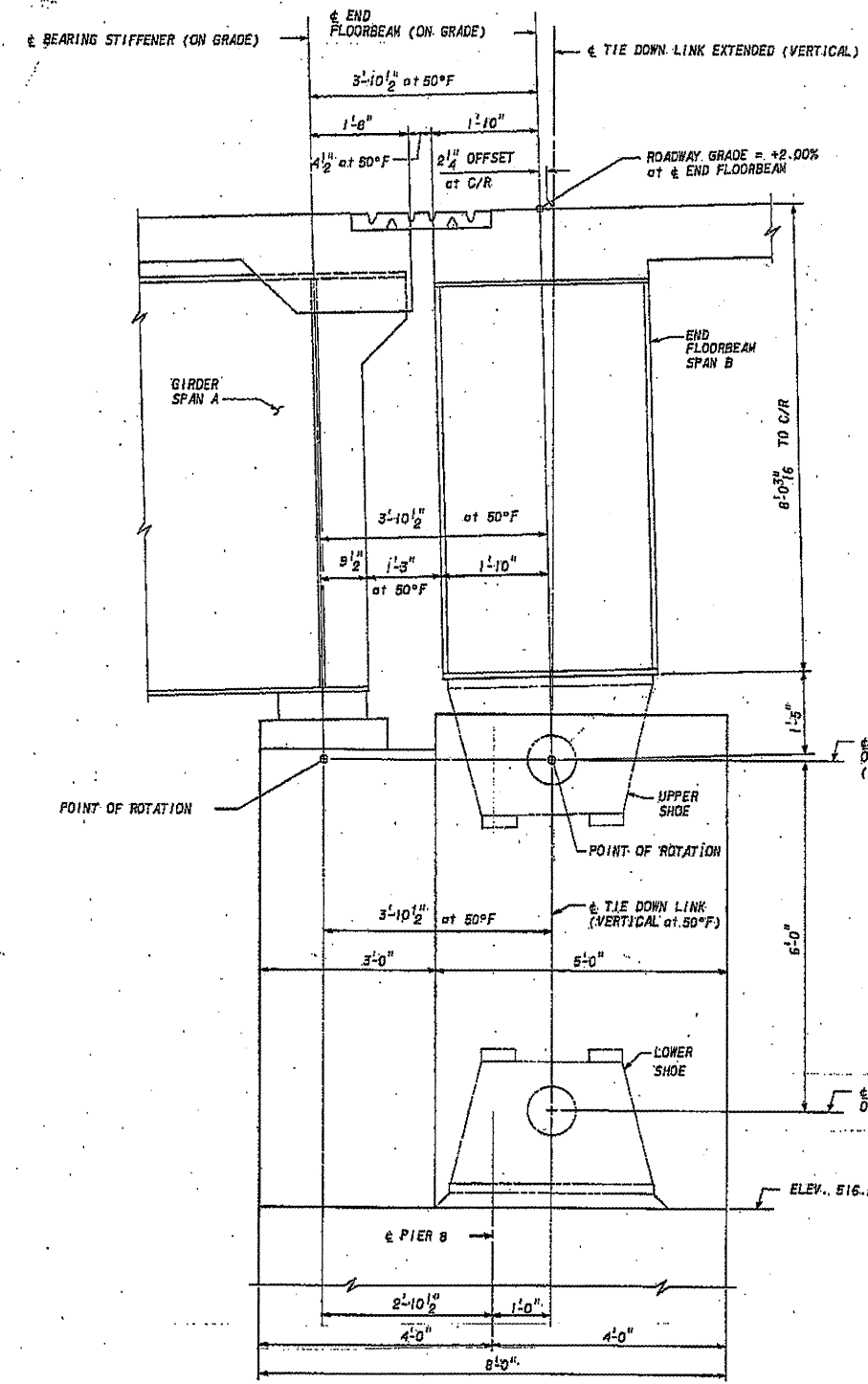


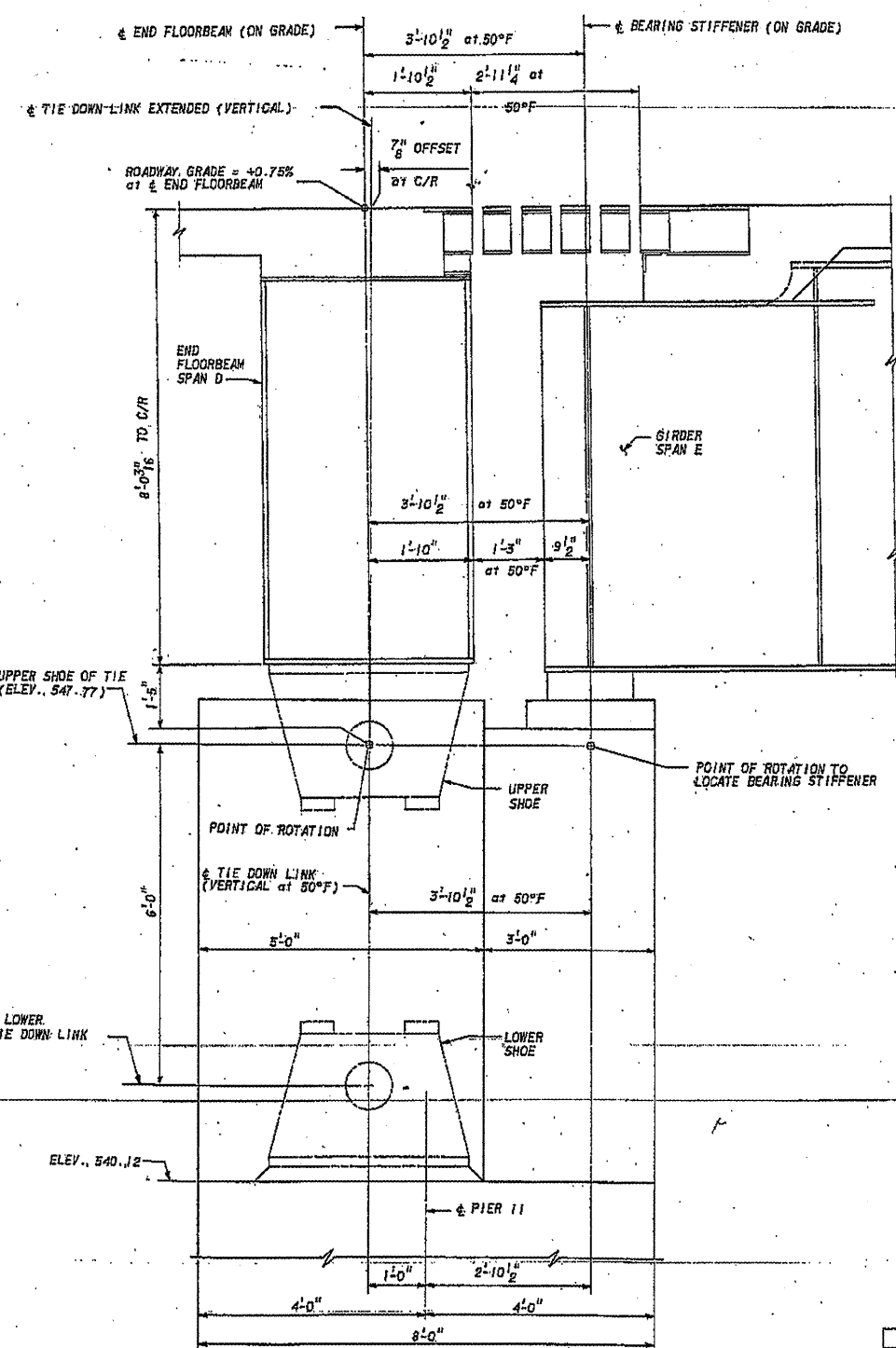
ROUTE NO.	SECTION	COUNTY	TOTAL SHEETS	SHEET NO.
S.B.I. 63	(28+22)	ADAMS	339	269
F.A.		ILLINOIS	FED. AID PROJECT	BR-F-63()

SHEET NO. 575
SHEETS 125



ELEVATION AT PIER 8

AHEAD STATION



ELEVATION AT PIER 11

PREPARED BY
MODJESKI AND MASTERS
CONSULTING ENGINEERS
FOR
Booker
Engineers Architects Planners
1138 Olive Street, St. Louis, Missouri 63101

DRAWN: SLH
CHKD.: CWH
APPD.: HEW
DATE: MAY 1983

FOR DETAILS REFER TO
STUDD MESS. BRIDGE & IRON CO. DESP.

REV. NO.	DRAWN	CHKD.	APPD.	DESCRIPTION	DATE
	HEE			CONSTRUCTED IN ESSENTIAL COMPLIANCE	8-87

STEEL ALTERNATIVE
F A ROUTE 63 (U.S. ROUTE 24)
OVER MISSISSIPPI RIVER
QUINCY, ILLINOIS

END FLOORBEAM
AND TIE DOWN DETAILS - 1

EXISTING STEEL PLANS
FOR INFORMATION ONLY