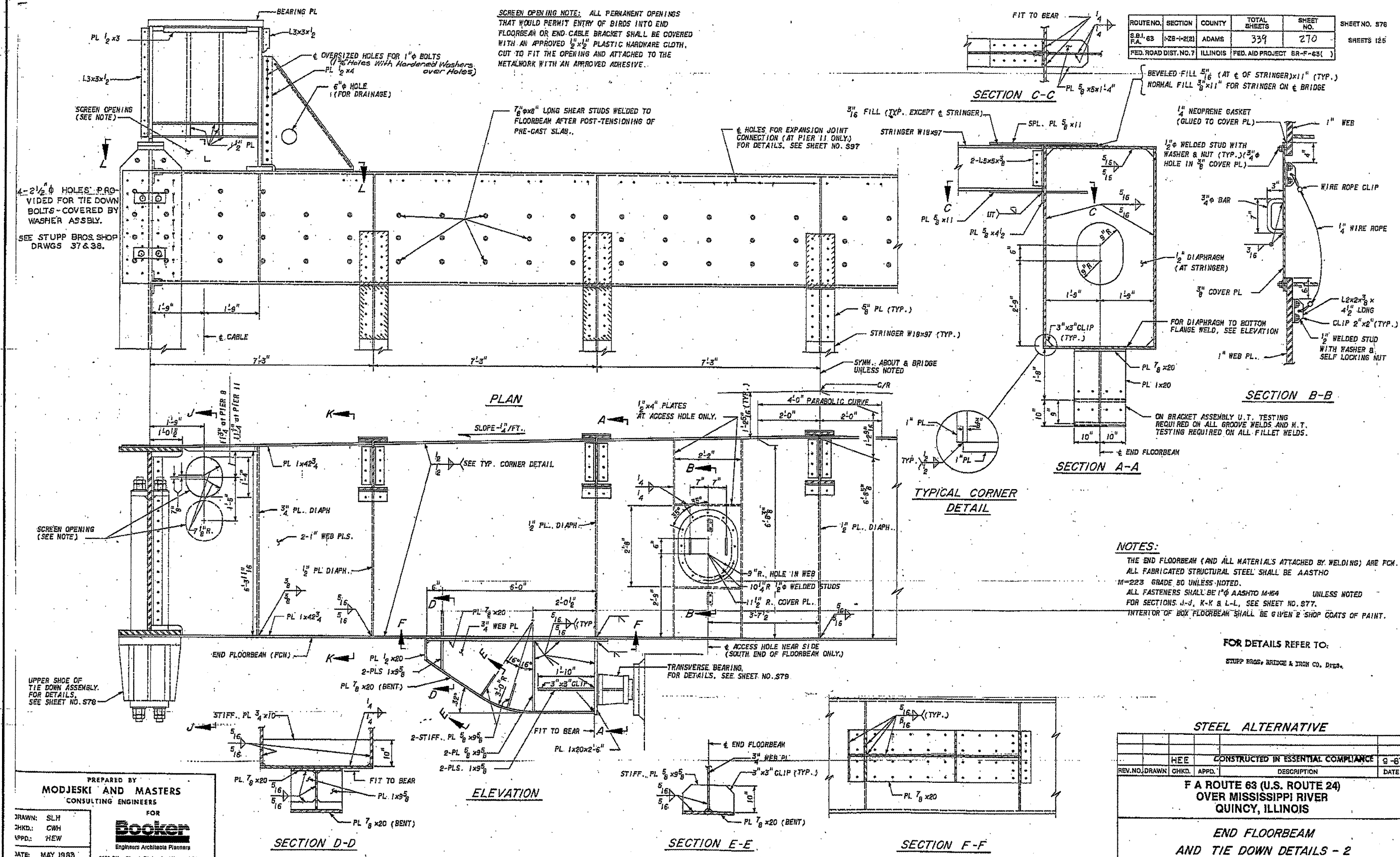


ROUT. NO.	SECTION	COUNTY	TOTAL SHEETS	SHEET NO.	SHEET NO. 576
S.B. 63	12B-1-2(2)	ADAMS	339	270	SHEETS 126
F.A.					
FED. ROAD DIST. NO. 7		ILLINOIS	FED. AID PROJECT BR-F-63()		

SCREEN OPENING NOTE: ALL PERMANENT OPENINGS THAT WOULD PERMIT ENTRY OF BIRDS INTO END FLOORBEAM OR END CABLE BRACKET SHALL BE COVERED WITH AN APPROVED $\frac{1}{2}$ " x $\frac{1}{2}$ " PLASTIC HARDWARE CLOTH, CUT TO FIT THE OPENING AND ATTACHED TO THE METALWORK WITH AN APPROVED ADHESIVE.



NOTES:
THE END FLOORBEAM (AND ALL MATERIALS ATTACHED BY WELDING) ARE FOR ALL FABRICATED STRUCTURAL STEEL SHALL BE AASTHO M-223 GRADE 50 UNLESS NOTED.
ALL FASTENERS SHALL BE $\frac{1}{2}$ " AASTHO M-64 UNLESS NOTED.
FOR SECTIONS J-J, K-K & L-L, SEE SHEET NO. 577.
INTERIOR OF BOX FLOORBEAM SHALL BE GIVEN 2 SHOP COATS OF PAINT.

FOR DETAILS REFER TO:
STUDD BROS. BRIDGE & IRON CO. DES.

STEEL ALTERNATIVE			
REV. NO.	DRAWN	CHKD.	APPD.
	HEE		CONSTRUCTED IN ESSENTIAL COMPLIANCE
			DESCRIPTION
			DATE
F A ROUTE 63 (U.S. ROUTE 24) OVER MISSISSIPPI RIVER QUINCY, ILLINOIS			
END FLOORBEAM AND TIE DOWN DETAILS - 2			

PREPARED BY
MODJESKI AND MASTERS
CONSULTING ENGINEERS
FOR
Booker
Engineers Architects Planners
1199 Olive Street, St. Louis, Missouri 63101

DRAWN: SLH
CHKD: CWH
UPPD: HEW
DATE: MAY 1995

EXISTING STEEL PLANS
FOR INFORMATION ONLY