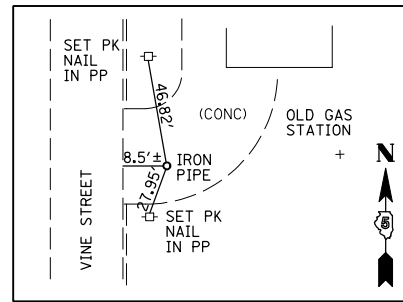
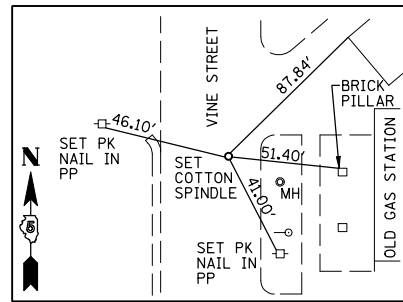


F.A.P. RTE.	SECTION	COUNTY	TOTAL SHEETS	SHEET NO.
816	•	DOUGLAS	176	17
STA.		TO STA.		
FED. ROAD DIST. NO.	ILLINOIS	FED. AID PROJECT		

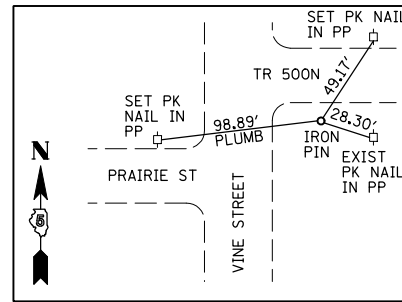
CONTRACT NO. 90711  
• 6RS-1 & (6BR)BR



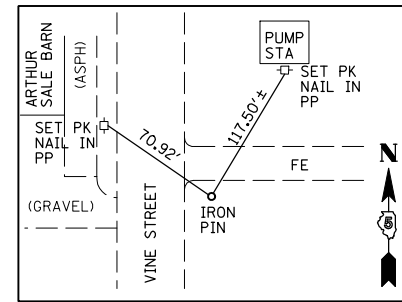
STA 99+76±  
C.P. #10  
(IRON PIPE)



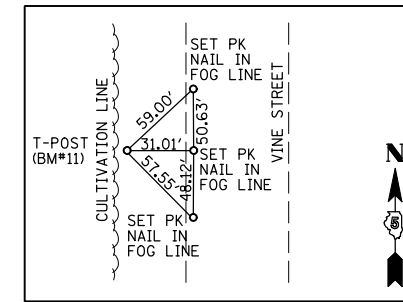
PI FAP 816  
STA 100+54.00  
(COTTON SPINDLE)



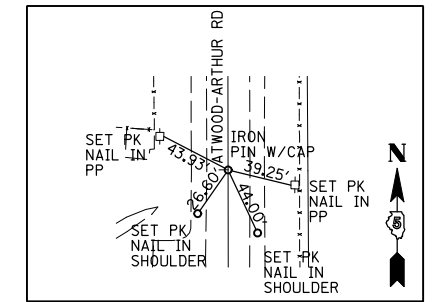
STA 105+73.00  
C.P. #11-52  
(IRON PIPE)



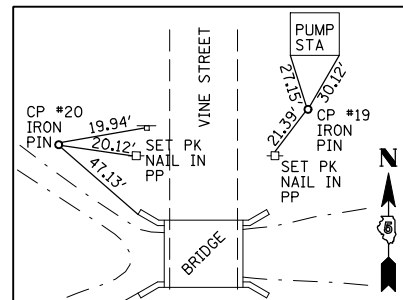
STA 118+82.00±  
C.P. #12  
(IRON PIN)



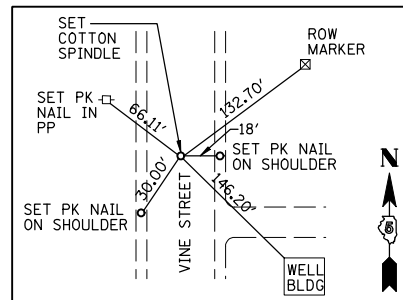
STA 134+55±  
C.P. #18 BM #11



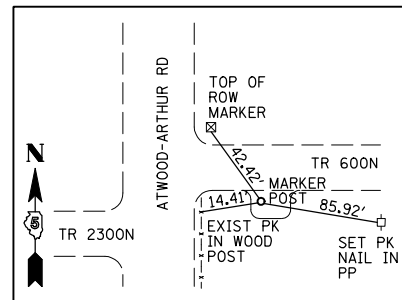
STA 142+00.00  
P.O.T.  
(T-POST)



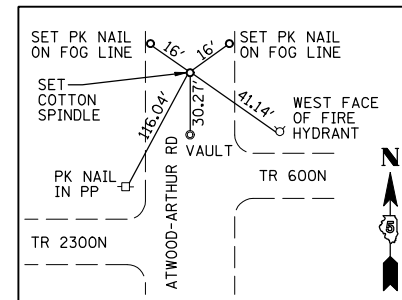
STA 145+25.00± C.P. #20  
STA 145+35.00± C.P. #19  
(IRON PIN)



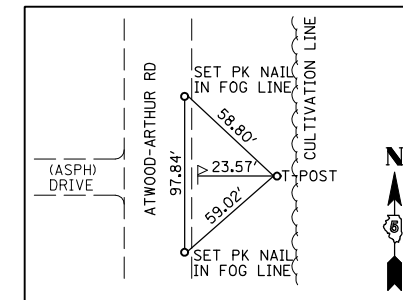
PC FAP 816  
STA 147+15.28  
(COTTON SPINDLE)



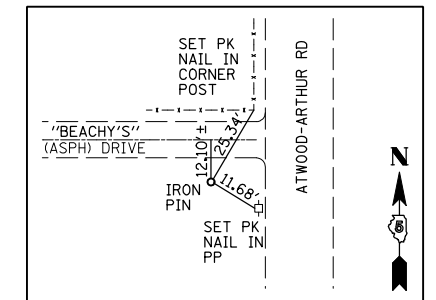
STA 159+10.00±  
C.P. #13  
(MARKER POST)



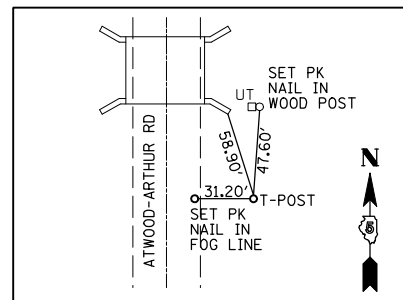
PT FAP 816  
STA 159+65.39  
(COTTON SPINDLE)



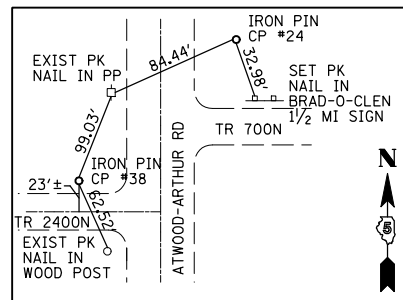
STA 171+68  
C.P. #21 BM #14  
(T-POST)



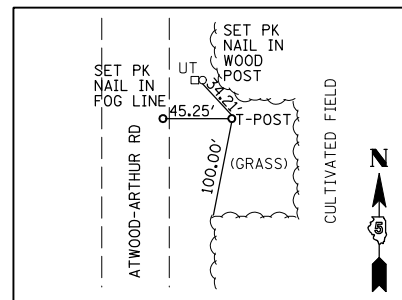
STA 184+71.00±  
C.P. #22  
(IRON PIN)



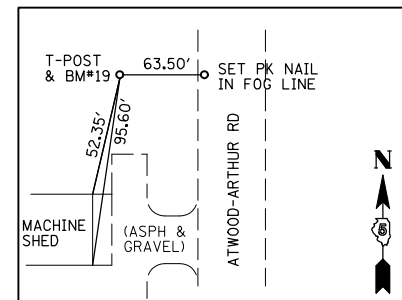
STA 200+07.00±  
C.P. #23  
(T-POST)



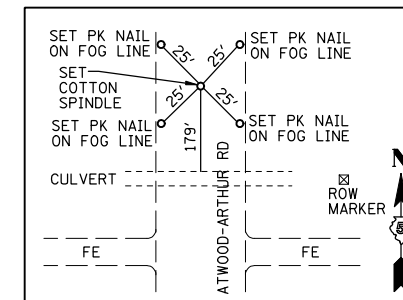
STA 211+29.00± C.P. #38  
STA 212+49.00± C.P. #24  
(IRON PIPE)



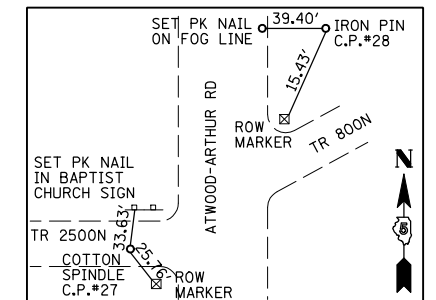
STA 224+77.00±  
C.P. #25  
(T-POST)



STA 236+63.00  
C.P. #26 BM #19  
(T-POST)



PI FAP 816  
STA 253+72.63  
(COTTON SPINDLE)



STA 263+85.00± C.P. #27  
(COTTON SPINDLE)  
STA 264+80.00± C.P. #28  
(IRON PIN)

REVISIONS	
NAME	DATE

ILLINOIS DEPARTMENT OF TRANSPORTATION  
**SURVEY TIES AND BENCHMARKS**  
FAP ROUTE 816  
ATWOOD-ARTHUR RD  
SECTION 6RS-1 & (6BR)BR  
DOUGLAS COUNTY

SCALE: VERT. HORIZ.  
DATE: 11/24/03  
DRAWN BY: JJO  
CHECKED BY: PJM