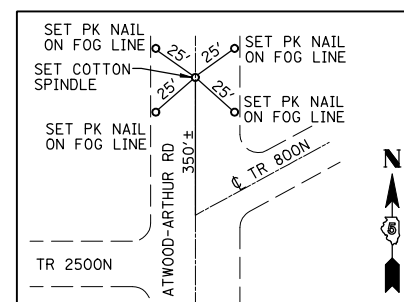


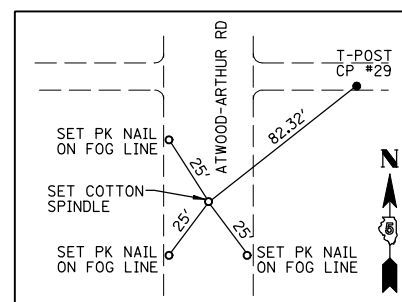
F.A.P. RTE.	SECTION	COUNTY	TOTAL SHEETS	SHEET NO.
816	•	DOUGLAS	176	18

STA.	TO STA.
FED. ROAD DIST. NO.	ILLINOIS FED. AID PROJECT

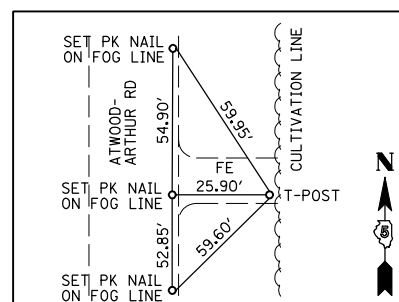
CONTRACT NO. 90711
• 6RS-1 & (6BR)BR



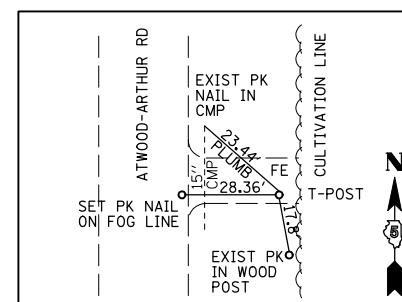
PC FAP 816
STA 267+85.61
(COTTON SPINDLE)



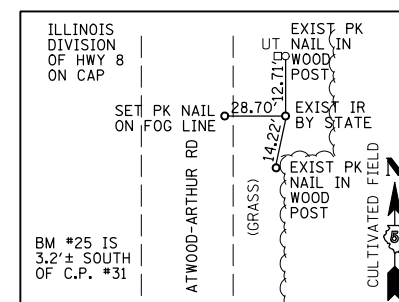
PT FAP 816
STA 276+39.05
(COTTON SPINDLE)



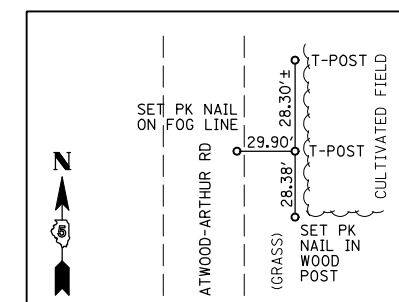
STA 277+11.00±
C.P. #29 BM #22
(T-POST)



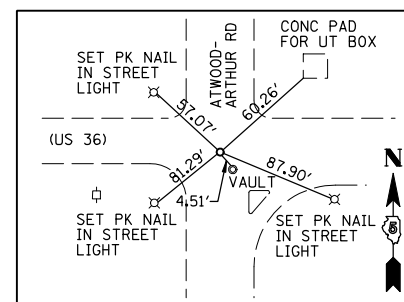
STA 290+83.00±
C.P. #30 BM #23
(T-POST)



STA 315+29.50±
C.P. #31
(IRON ROD)



STA 324+62.00
C.P. #32
(T-POST)



PI FAP 816
STA 350+15.31
(COTTON SPINDLE)

BENCHMARK LOCATIONS

NUMBER	ELEVATION	STATION	OFFSET	DESCRIPTION
10	659.26	111+62.41	39.70' LT	1st FIRE HYDRANT N. OF PRAIRIE ON THE W. SIDE OF VINE ST. (ATWOOD-ARTHUR ROAD)
11	657.82	134+14.81	42.41' LT	220' S. OF CL THERMOGAS DRIVE ON THE W. SIDE OF VINE ST. (ATWOOD-ARTHUR ROAD)
12	661.96	144+45.57	22.60' RT	CUT "□" ON THE S.E. CORNER CONC. RAIL OF BRIDGE OVER THE W. FORK OF KASKASKIA RIVER W. VINE ST (ATWOOD-ARTHUR ROAD)
13	666.69	159+54.18	40.00' RT	TOP FIRE HYDRANT AT THE N.E. CORNER OF VINE ST. (ATWOOD-ARTHUR ROAD) & T.R. 600N
14	661.44	171+66.99	44.97' RT	TOP FENCE POST ON THE E. SIDE OF VINE ST. (ATWOOD-ARTHUR ROAD) OPPOSITE THE FAR N. HOUSE W. SIDE OF VINE ST.
15	661.43	179+96.93	17.94' RT	CUT "□" ON TOP CENTER BOX CULVERT ON THE E. SIDE OF ATWOOD-ARTHUR ROAD 350' S. OF S. DRIVEWAY TO JONES' FARM
16	660.88	200+04.46	43.23' RT	TOP FENCE POST 0.25± MILE N. OF THE N. DRIVEWAY TO JONES' FARM ON THE E. SIDE OF ATWOOD-ARTHUR ROAD
17	665.03	212+19.70	42.11' RT	TOP FIRE HYDRANT AT THE N.E. CORNER OF ATWOOD-ARTHUR ROAD & T.R. 700N
18	665.53	224+76.54	56.91' RT	T-POST FLUSH WITH GROUND 0.2± MILE N. OF T.R. 700N ON THE E. SIDE OF ATWOOD-ARTHUR ROAD
19	671.63	236+63.09	75.09' LT	T-POST AT MACHINE SHED ON W. SIDE OF ATWOOD-ARTHUR ROAD 0.45± MILE N. OF T.R. 700N
20	674.26	251+93.17	18.01' LT	CUT "□" CENTER OF CONC. HEADWALL OF 3'x2' BOX CULVERT ON THE W. SIDE OF ATWOOD-ARTHUR ROAD
21	679.55	264+70.65	40.72' RT	TOP FIRE HYDRANT AT THE N.E. CORNER OF ATWOOD-ARTHUR ROAD & T.R. 800N ON ATWOOD-ARTHUR ROAD
22	674.92	277+12.16	37.80' RT	T-POST FLUSH WITH GROUND AT FE ON THE E. SIDE OF ATWOOD-ARTHUR ROAD 0.25± MILE N. OF T.R. 800N
23	674.32	290+84.17	40.15' RT	T-POST FLUSH WITH GROUND AT FE ON THE E. SIDE OF ATWOOD-ARTHUR ROAD 0.45± MILE N. OF T.R. 800N
24	672.53	300+96.69	17.78' LT	CUT "□" ON CENTER OF W. HEADWALL 3'x2' BOX CULVERT 0.65± MILE N. OF T.R. 800N
25	669.89	315+27.21	40.31' RT	T-POST FLUSH WITH GROUND 0.9± MILE N. OF T.R. 800N ON THE E. SIDE OF ATWOOD-ARTHUR ROAD
26	663.75	324+62.96	41.58' RT	T-POST FLUSH WITH GROUND 1.1± MILE N. OF T.R. 800N ON THE E. SIDE ATWOOD-ARTHUR ROAD
27	664.54	338+80.26	63.63' RT	TOP OF S.W. GUARD POST FOR NATURAL GAS PIPELINE VALVE 1.3± MILE N. OF T.R. 800N ON THE E. SIDE OF ATWOOD-ARTHUR ROAD
28	662.67	349+20.64	40.19' RT	CUT "□" ON CENTER HEADWALL OF BOX CULVERT AT THE S.E. CORNER OF T.R. 950N (CH 36) & ATWOOD-ARTHUR ROAD
29	665.38	349+08.34	60.43' LT	SPINDLE NAIL IN THE N. LEG OF "ARTHUR" SIGN AT THE S.W. CORNER OF T.R. 950N (CH 36) & ATWOOD-ARTHUR ROAD

REVISIONS	
NAME	DATE

ILLINOIS DEPARTMENT OF TRANSPORTATION
SURVEY TIES AND BENCHMARKS
FAP ROUTE 816
ATWOOD-ARTHUR RD
SECTION 6RS-1 & (6BR)BR
DOUGLAS COUNTY

SCALE: VERT.
HORIZ.
DATE: 11/24/03

DRAWN BY: JJO
CHECKED BY: PJM