

MOULTRIE COUNTY
NE 1/4 SECTION 12, T15N, R6E

STATE BANK OF ARTHUR,
AS TRUSTEE OF TRUST NO. 489
(5612034)

CHICAGO TITLE AND TRUST COMPANY
(5612035)

DOUGLAS COUNTY
NW 1/4 SECTION 7, T15N, R7E

F.A.P. RTE.	SECTION	COUNTY	TOTAL SHEETS	SHEET NO.
816	6RS-1 & (6BR)BR	DOUGLAS	176	29

STA.	TO STA.
250+00	265+00

CONTRACT NO.	SECTION	USFL	DSFL
90711	STA 264+15, 39' LT	0.10%	673.85
	STA 264+38.10, 37' LT	0.07%	673.90
	STA 264+36.55, 37' RT	0.27%	674.07

CONTRACT NO.	SECTION	USFL	DSFL
90711	STA 263+68, 37' LT	0.22%	673.80
	STA 263+75, 39' LT	0.10%	673.85
	STA 263+93.33, 37' LT	0.22%	673.89

CONTRACT NO.	SECTION	USFL	DSFL
90711	STA 251+93.89, 25' RT	0.12%	669.10
	STA 251+11.60, 37' RT	0.12%	671.34
	STA 250+00, 25' RT	0.16%	671.45

CONTRACT NO.	SECTION	USFL	DSFL
90711	STA 264+15, 37' LT	0.10%	673.85
	STA 264+36.55, 37' RT	0.27%	674.07
	STA 264+38.10, 37' LT	0.07%	673.90

CONTRACT NO.	SECTION	USFL	DSFL
90711	STA 263+68, 37' LT	0.22%	673.80
	STA 263+75, 39' LT	0.10%	673.85
	STA 263+93.33, 37' LT	0.22%	673.89

CONTRACT NO.	SECTION	USFL	DSFL
90711	STA 251+93.89, 25' RT	0.12%	669.10
	STA 251+11.60, 37' RT	0.12%	671.34
	STA 250+00, 25' RT	0.16%	671.45

CONTRACT NO.	SECTION	USFL	DSFL
90711	STA 264+15, 37' LT	0.10%	673.85
	STA 264+36.55, 37' RT	0.27%	674.07
	STA 264+38.10, 37' LT	0.07%	673.90

CONTRACT NO.	SECTION	USFL	DSFL
90711	STA 263+68, 37' LT	0.22%	673.80
	STA 263+75, 39' LT	0.10%	673.85
	STA 263+93.33, 37' LT	0.22%	673.89

CONTRACT NO.	SECTION	USFL	DSFL
90711	STA 251+93.89, 25' RT	0.12%	669.10
	STA 251+11.60, 37' RT	0.12%	671.34
	STA 250+00, 25' RT	0.16%	671.45

CONTRACT NO.	SECTION	USFL	DSFL
90711	STA 264+15, 37' LT	0.10%	673.85
	STA 264+36.55, 37' RT	0.27%	674.07
	STA 264+38.10, 37' LT	0.07%	673.90

CONTRACT NO.	SECTION	USFL	DSFL
90711	STA 263+68, 37' LT	0.22%	673.80
	STA 263+75, 39' LT	0.10%	673.85
	STA 263+93.33, 37' LT	0.22%	673.89

CONTRACT NO.	SECTION	USFL	DSFL
90711	STA 251+93.89, 25' RT	0.12%	669.10
	STA 251+11.60, 37' RT	0.12%	671.34
	STA 250+00, 25' RT	0.16%	671.45

CONTRACT NO.	SECTION	USFL	DSFL
90711	STA 264+15, 37' LT	0.10%	673.85
	STA 264+36.55, 37' RT	0.27%	674.07
	STA 264+38.10, 37' LT	0.07%	673.90

CONTRACT NO.	SECTION	USFL	DSFL
90711	STA 263+68, 37' LT	0.22%	673.80
	STA 263+75, 39' LT	0.10%	673.85
	STA 263+93.33, 37' LT	0.22%	673.89

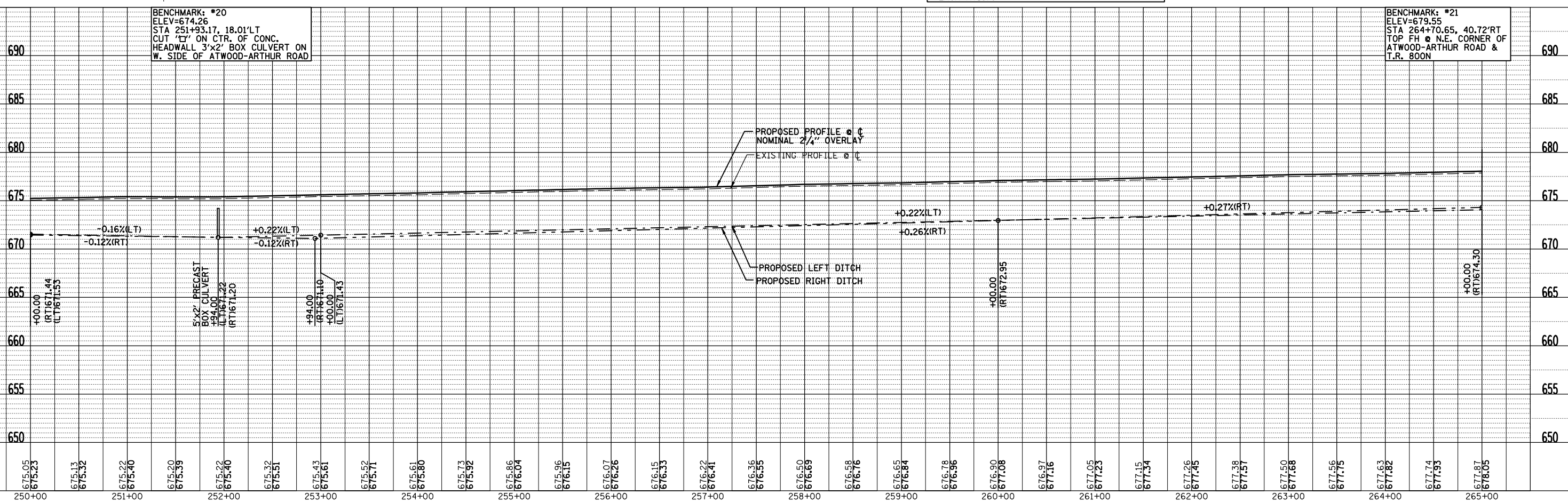
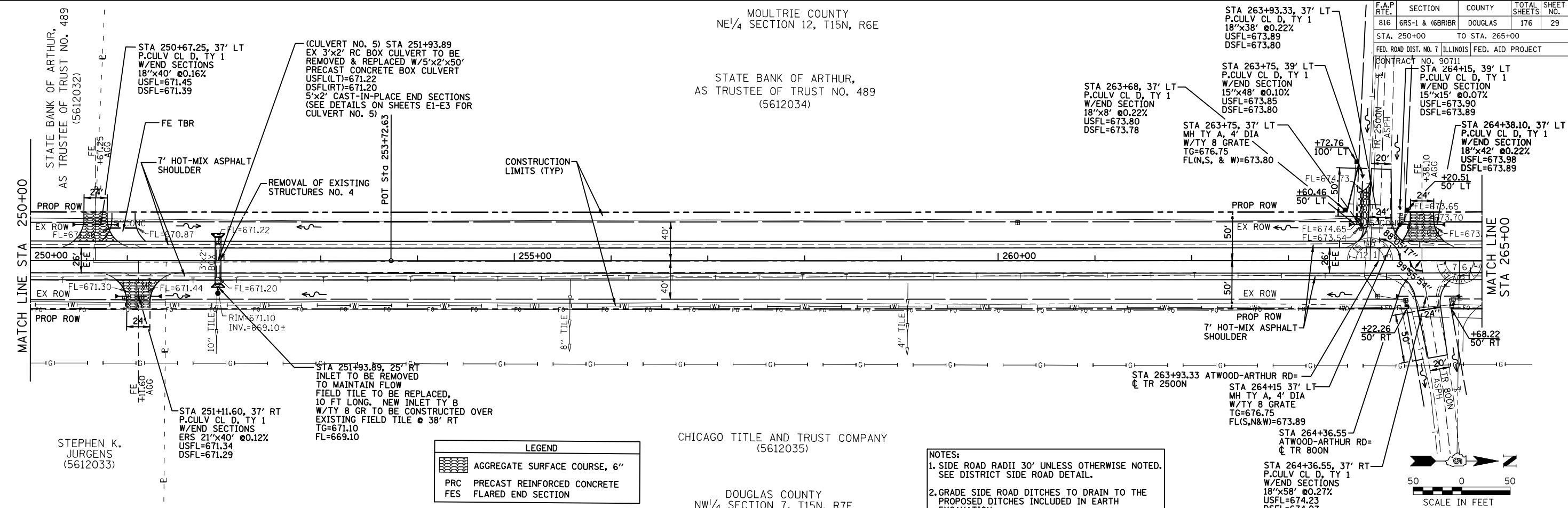
CONTRACT NO.	SECTION	USFL	DSFL
90711	STA 251+93.89, 25' RT	0.12%	669.10
	STA 251+11.60, 37' RT	0.12%	671.34
	STA 250+00, 25' RT	0.16%	671.45

CONTRACT NO.	SECTION	USFL	DSFL
90711	STA 264+15, 37' LT	0.10%	673.85
	STA 264+36.55, 37' RT	0.27%	674.07
	STA 264+38.10, 37' LT	0.07%	673.90

CONTRACT NO.	SECTION	USFL	DSFL
90711	STA 263+68, 37' LT	0.22%	673.80
	STA 263+75, 39' LT	0.10%	673.85
	STA 263+93.33, 37' LT	0.22%	673.89

PLAN	DATE
SURVEYED	
PLOTTED	
CHECKED	
BY	
NO.	

PROFILE	DATE
SURVEYED	
PLOTTED	
CHECKED	
BY	
NO.	



FARNSWORTH GROUP, INC. CONSULTING ENGINEERS - BLOOMINGTON, ILLINOIS STA 250+00 TO STA 265+00