

MOULTRIE COUNTY
SE 1/4 SECTION 1, T15N, R6E

MOULTRIE COUNTY
NE 1/4 SECTION 1, T15N, R6E

F.A.P. RTE.	SECTION	COUNTY	TOTAL SHEETS	SHEET NO.
816	6RS-1 & 6BR/BR	DOUGLAS	176	32
STA. 295+00		TO STA. 310+00		
FED. ROAD DIST. NO. 7		ILLINOIS		FED. AID PROJECT
CONTRACT NO. 90711				

UNIVERSITY
OF ILLINOIS
(5612038)

(CULVERT NO. 7) STA 300+96.63
EX 3'x2' BOX CULVERT TO BE
EXTENDED W/3'x2' PRECAST CONCRETE
BOX CULVERT 8 LF(LT) & 8 LF(RT)
USFL(LT)=669.44
DSFL(RT)=669.20
3'x2' CAST-IN-PLACE END SECTIONS
(SEE DETAILS ON SHEETS G1-G2 FOR
CULVERT NO. 7)

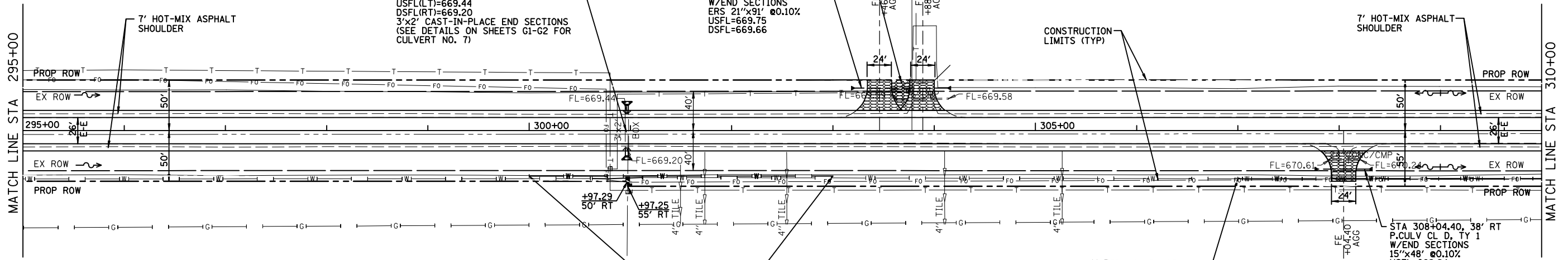
FILL BETWEEN ENTRANCES
WITH EARTH AND TOP WITH
6" OF AGG. SURFACE. CSE.

STA 303+88.80, 42' LT
P.CULV CL D, TY 1
W/END SECTIONS
ERS 21'x91' @0.10%
USFL=669.75
DSFL=669.66

RICHARD E. & FLOUSSIE B.
TAYLOR
(5612041)

7' HOT-MIX ASPHALT
SHOULDER

CONSTRUCTION
LIMITS (TYP)



WILLOUGHBY TRUST, et al
(5612039)

WATERMAIN TO BE
ADJUSTED STA 300+00
TO STA 303+00
(BY OTHERS)

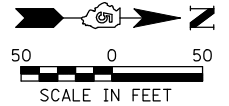
LEOTA DUKEMAN TRUST, et al
(5612040)

WATERMAIN TO BE
ADJUSTED STA 307+00
TO STA 322+00
(BY OTHERS)

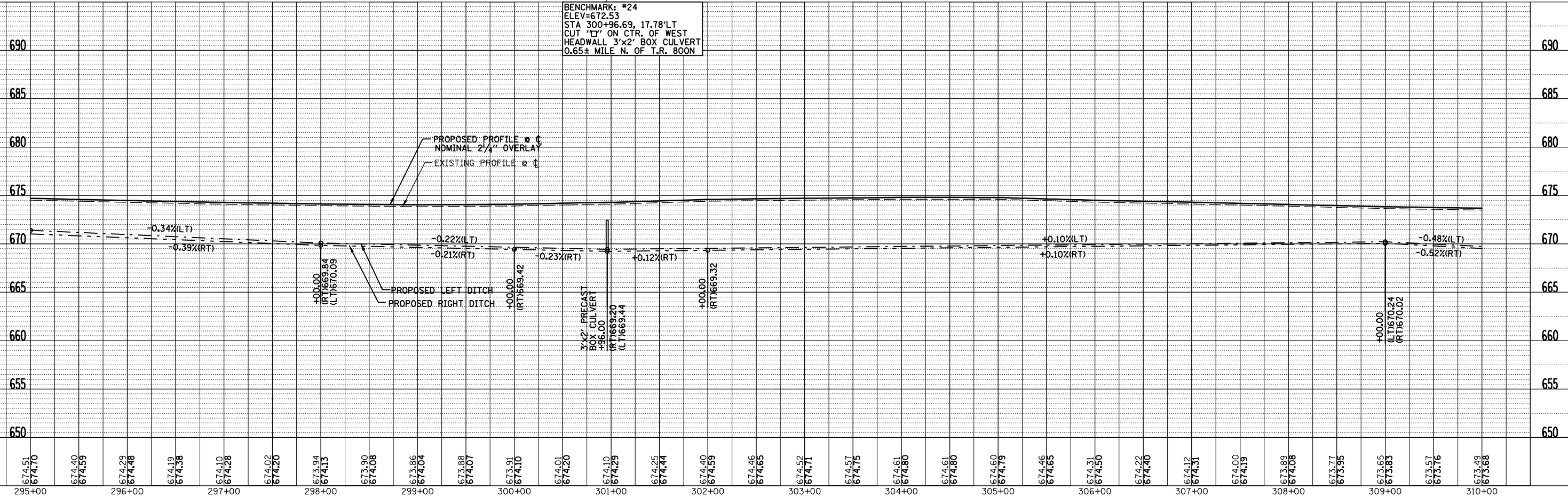
LEGEND	
	AGGREGATE SURFACE COURSE, 6"
	PRC PRECAST REINFORCED CONCRETE
	FES FLARED END SECTION

DOUGLAS COUNTY
SW 1/4 SECTION 6, T15N, R7E

DOUGLAS COUNTY
NW 1/4 SECTION 6, T15N, R7E



BENCHMARK: #24
ELEV=672.53
STA 300+96.69, 17.78' LT
CUT "C" ON CTR. OF WEST
HEADWALL 3'x2' BOX CULVERT
0.65± MILE N. OF T.R. 800N



FARNSWORTH GROUP, INC. CONSULTING ENGINEERS - BLOOMINGTON, ILLINOIS

STA 295+00 TO STA 310+00