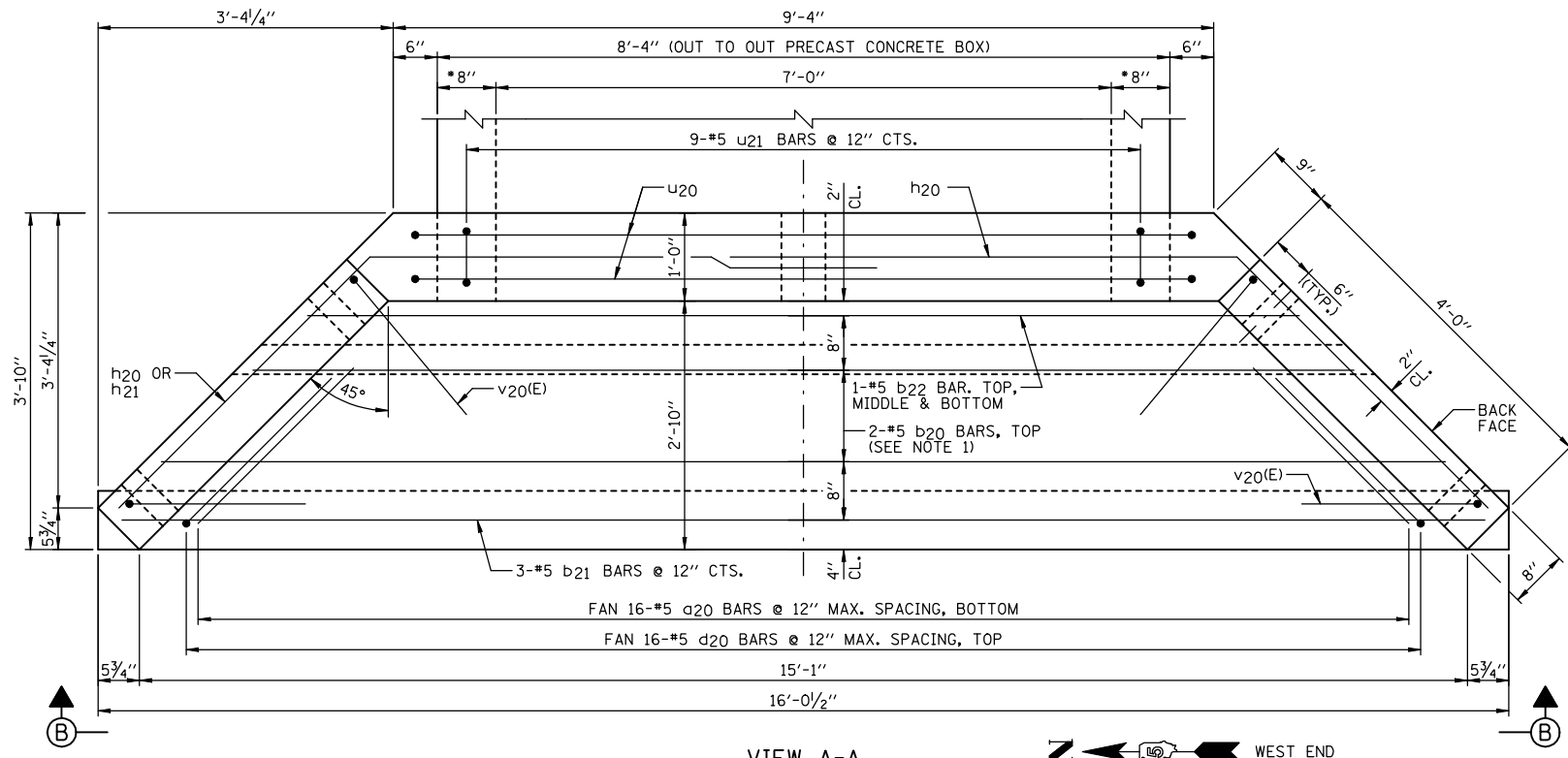
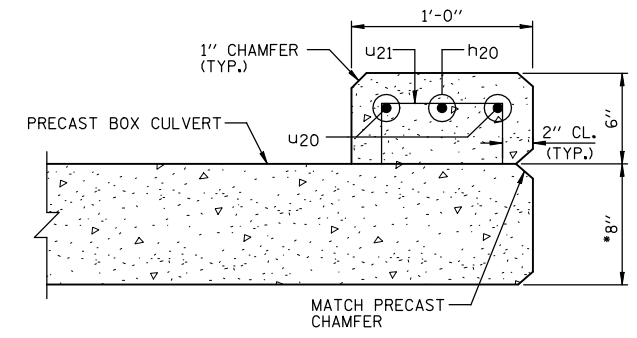


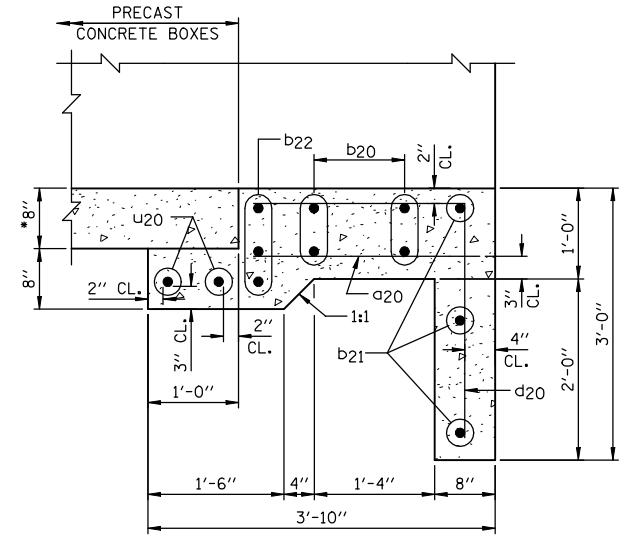
F.A.P. RTE.	SECTION	COUNTY	TOTAL SHEETS	SHEET NO.
B16	6RS-1 & (6R)BR	DOUGLAS	176	81
STA.		TO STA.		
FED. ROAD DIST. NO.	ILLINOIS	FED. AID PROJECT		
CONTRACT NO. 90711		SHEET NO. D2		
OF 3 SHEETS				



VIEW A-A
 • CONFIRM WALL THICKNESS WITH PRECASTER

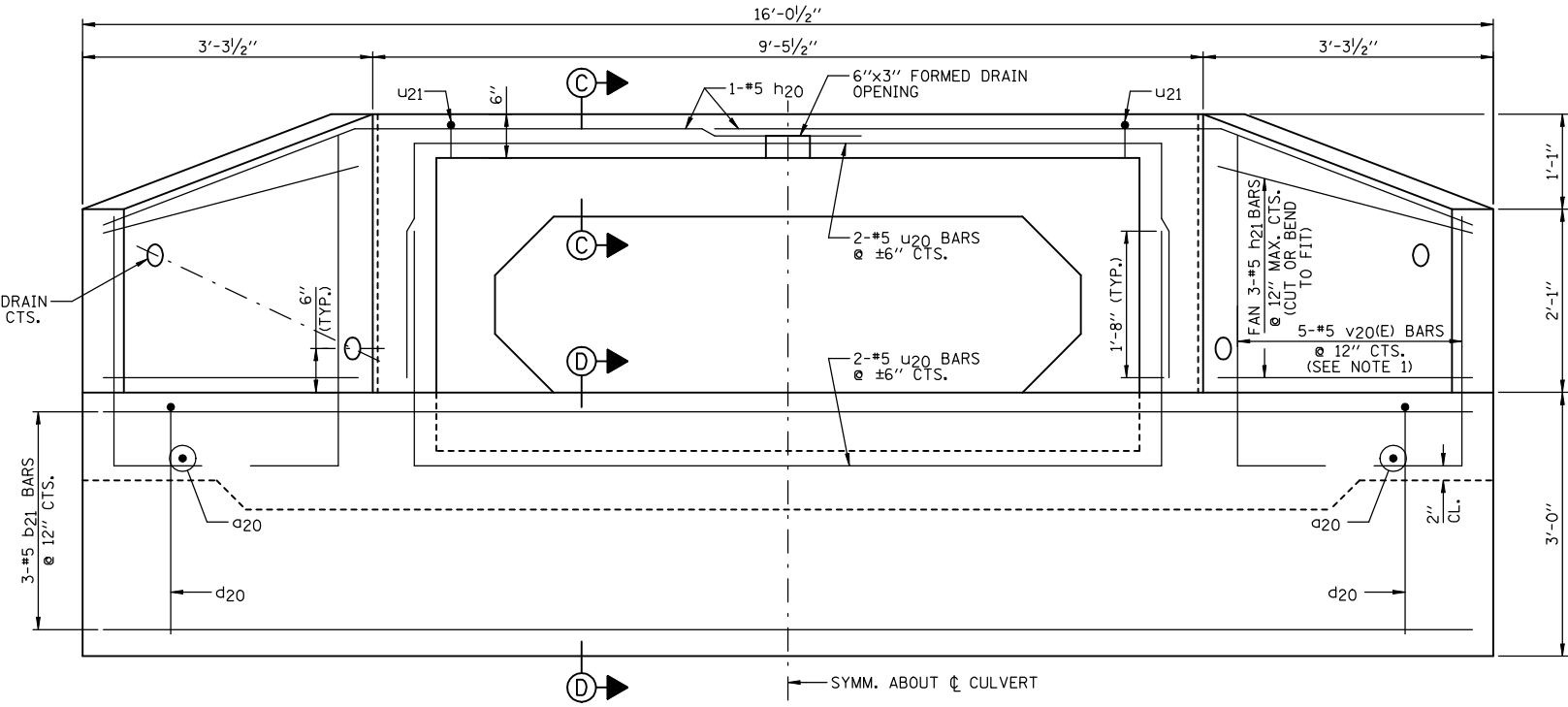


SECTION C-C
 • CONFIRM SLAB THICKNESS WITH PRECASTER



SECTION D-D
 • CONFIRM SLAB THICKNESS WITH PRECASTER

2-3" Ø FORMED DRAIN HOLES @ ±3'-0" CTS. (2:1 SLOPE)



END ELEVATION (VIEW B-B)

NOTES:

- 1.) ORDER b20 & v20(E) BARS FULL LENGTH. CUT ACCORDING TO BAR CUTTING DIAGRAM ON SHEET D1. USE REMAINDER OF b20 BARS IN BOTTOM OF SLAB & REMAINDER OF v20(E) BARS IN OPPOSITE WINGWALL.
- 2.) MINIMUM BAR LAP: #5 = 1'-8"
- 3.) WORK THIS SHEET WITH SHEET D1.
- 4.) FOR LOCATION OF VIEW A-A SEE SHEET D1.

REVISIONS	
NAME	DATE

ILLINOIS DEPARTMENT OF TRANSPORTATION
CULVERT #4 REPLACEMENT
 (STA. 200+60.56)
 FAP ROUTE 816
 ATWOOD-ARTHUR RD
 SECTION 6RS-1 & (6R)BR
 DOUGLAS COUNTY
 PR. STR. 021-8051
 DATE: 11/24/03

DRAWN BY: DJM
 CHECKED BY: MSW