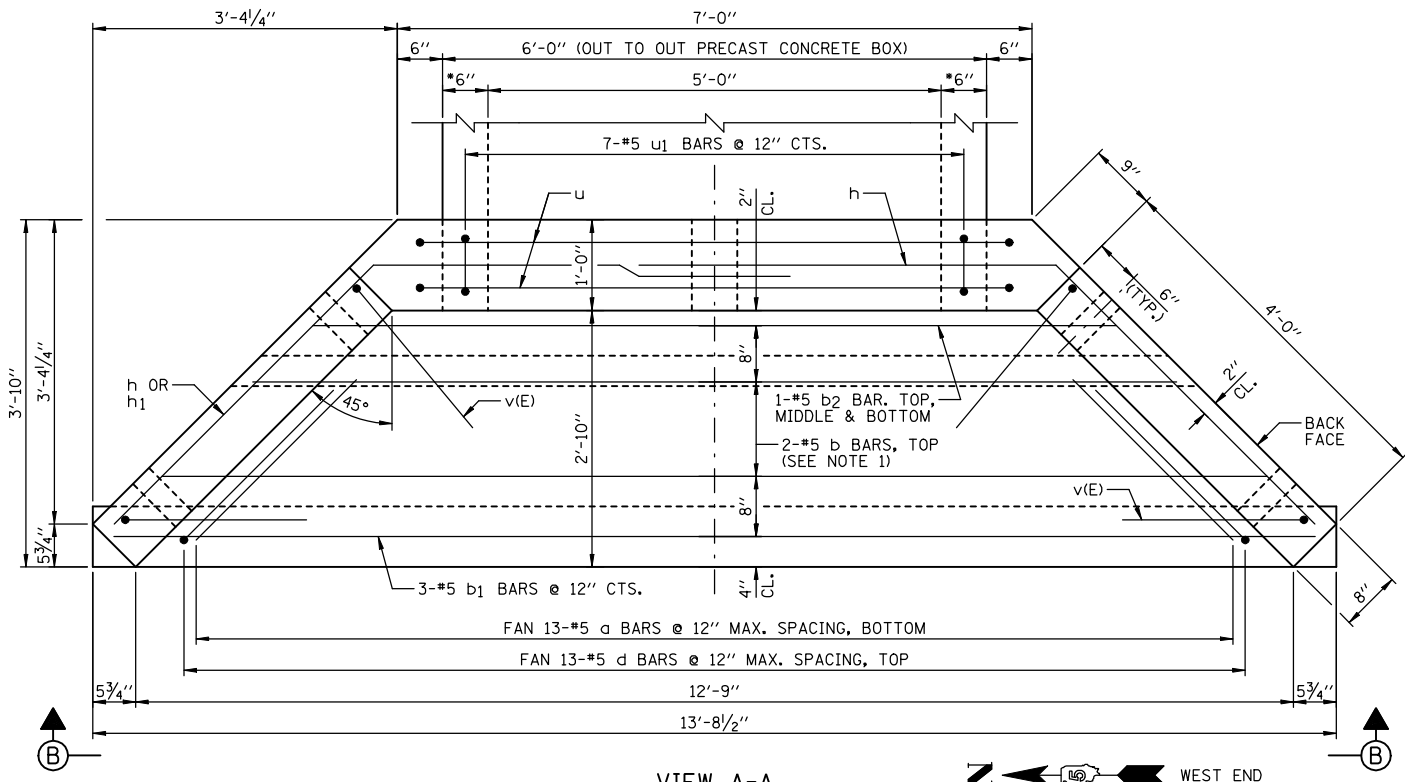
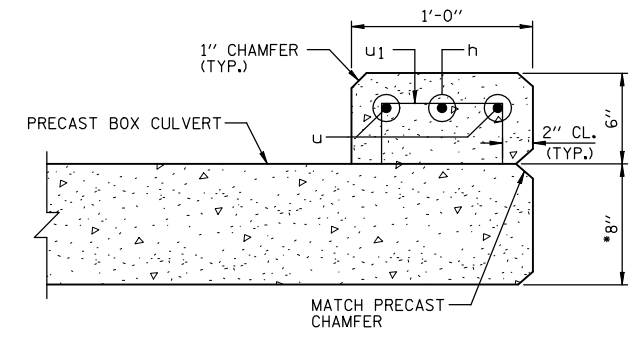


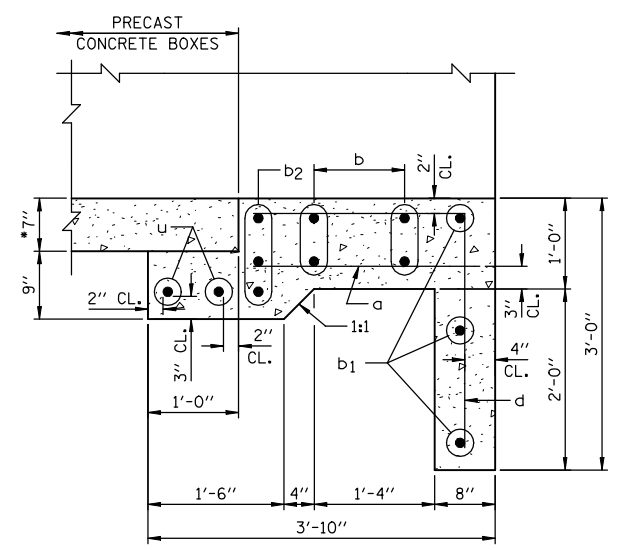
F.A.P. RTE.	SECTION	COUNTY	TOTAL SHEETS	SHEET NO.
B16	GRS-1 & (6BR)BR	DOUGLAS	176	84
STA.		TO STA.		
FED. ROAD DIST. NO.	ILLINOIS	FED. AID PROJECT		
CONTRACT NO. 90711		SHEET NO. E2		
OF 3 SHEETS				



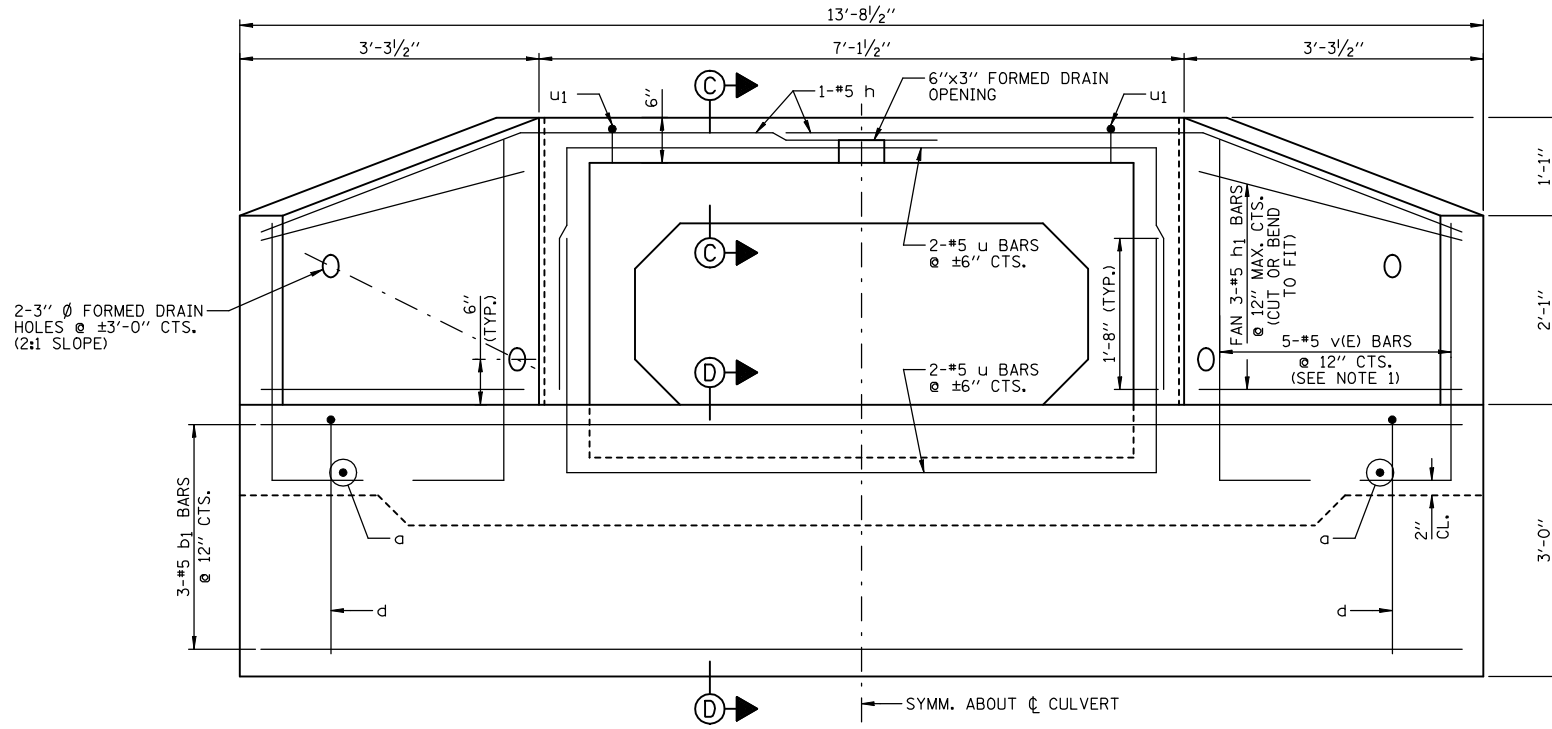
**VIEW A-A**  
 • CONFIRM WALL THICKNESS WITH PRECASTER



**SECTION C-C**  
 • CONFIRM SLAB THICKNESS WITH PRECASTER



**SECTION D-D**  
 • CONFIRM SLAB THICKNESS WITH PRECASTER



**END ELEVATION (VIEW B-B)**

- NOTES:**
- 1.) ORDER b & v(E) BARS FULL LENGTH. CUT ACCORDING TO BAR CUTTING DIAGRAM ON SHEET E1. USE REMAINDER OF b BARS IN BOTTOM OF SLAB & REMAINDER OF v(E) BARS IN OPPOSITE WINGWALL.
  - 2.) MINIMUM BAR LAP: #5 = 1'-8"
  - 3.) WORK THIS SHEET WITH SHEET E1.
  - 4.) FOR LOCATION OF VIEW A-A SEE SHEET E1.

REVISIONS	
NAME	DATE

ILLINOIS DEPARTMENT OF TRANSPORTATION  
**CULVERT #5 REPLACEMENT**  
 (STA. 251+93.89)  
 FAP ROUTE 816  
 ATWOOD-ARTHUR RD  
 SECTION 6RS-1 & (6BR)BR  
 DOUGLAS COUNTY  
 DRAWN BY: DJM  
 CHECKED BY: MSW  
 DATE: 11/24/03