

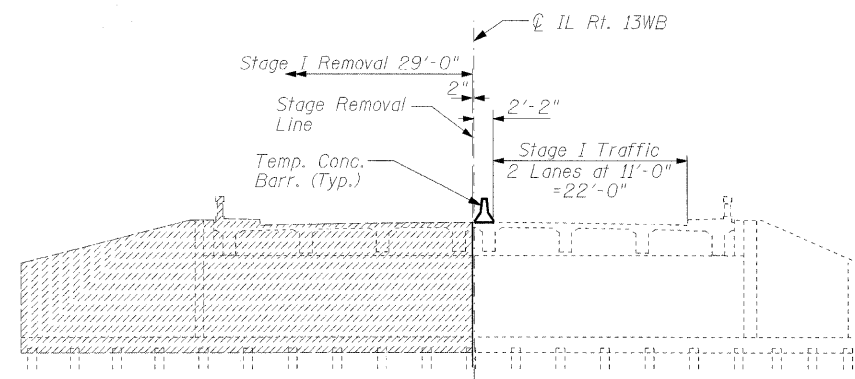
STATE OF ILLINOIS
DEPARTMENT OF TRANSPORTATION

ROUTE NO.	SECTION	COUNTY	TOTAL SHEETS	SHEET NO.
FAP 331	5B-3	JACKSON	25	16
FED. ROAD DIST. NO. 7	ILLINOIS	FED. AID PROJECT-		

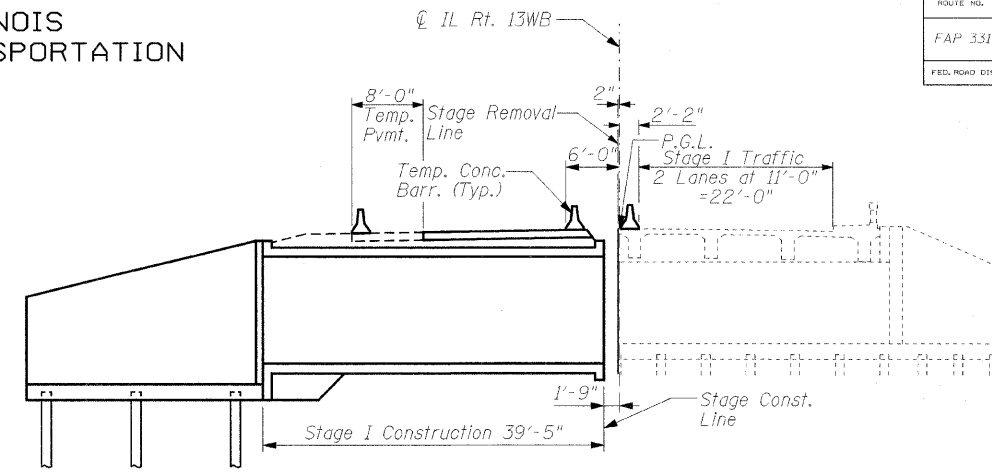
SHEET NO. 2

11 SHEETS

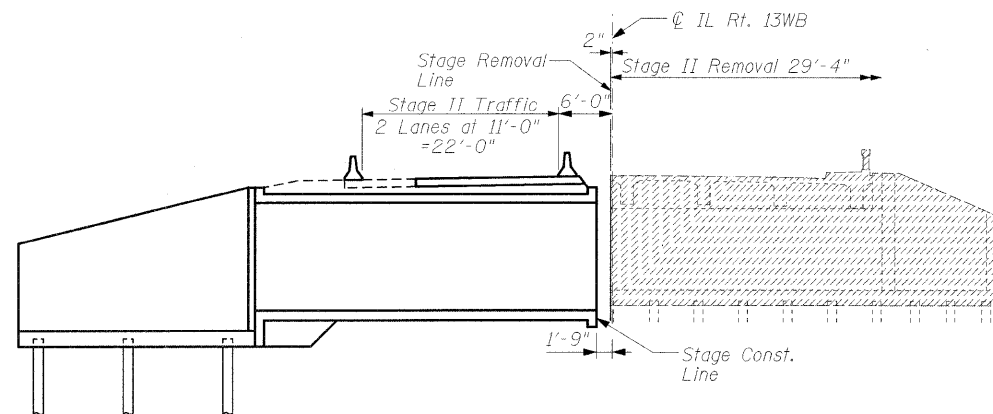
CONTRACT NO. 98566



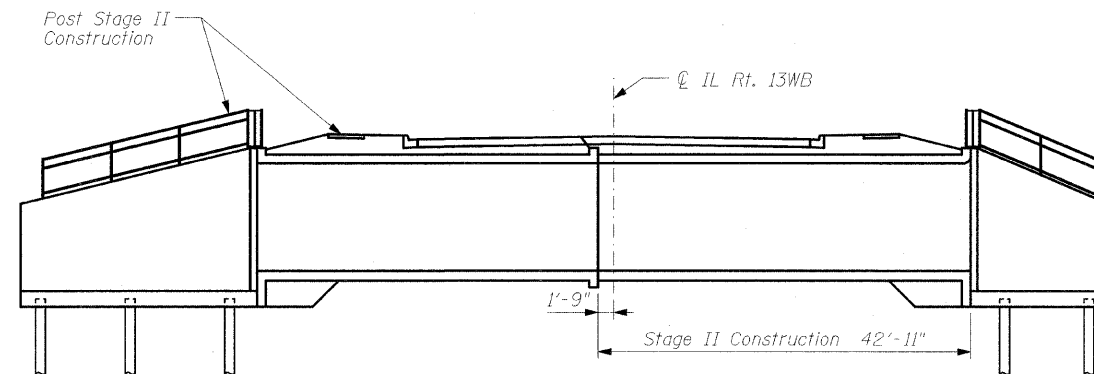
STAGE I REMOVAL
Looking East



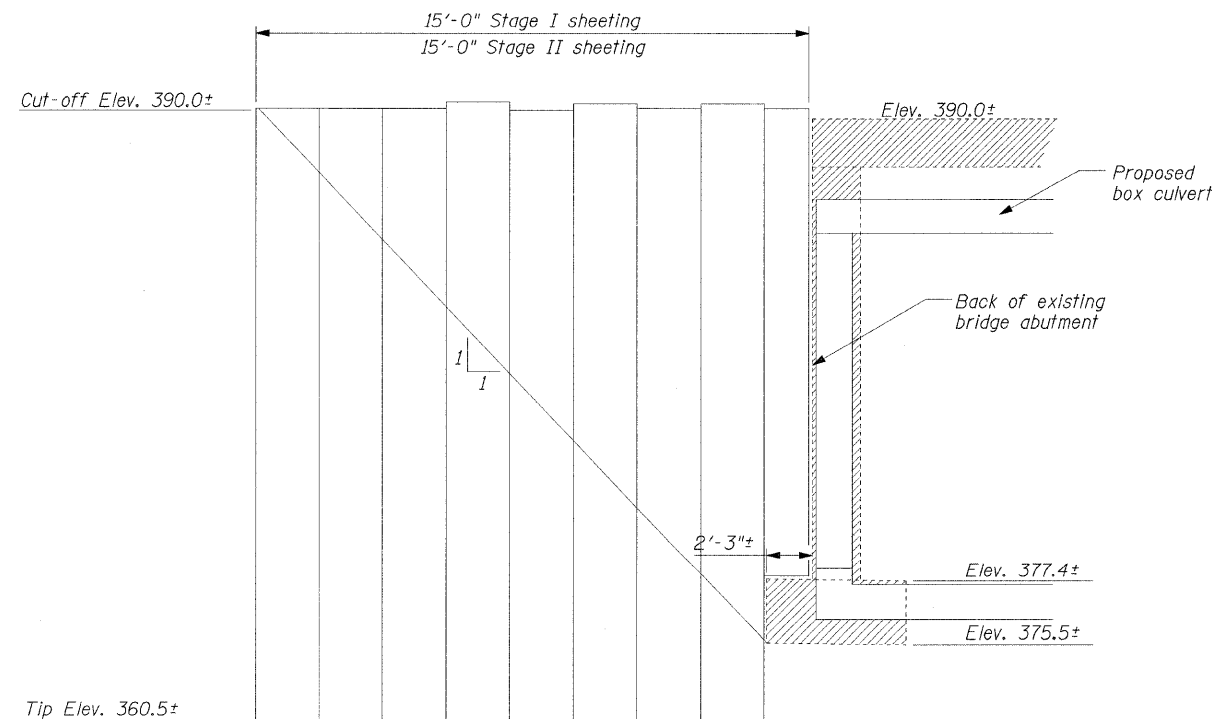
STAGE I CONSTRUCTION
Looking East



STAGE II REMOVAL
Looking East



STAGE II CONSTRUCTION
Looking East



TEMPORARY SHEET PILING

NOTES

- Hatched areas indicate "Removal of Existing Structures".
- For quantities of Temporary Concrete Barrier, see roadway plans.
- All dimensions are at right angles to the centerline of the roadway.
- For detail of Temporary Concrete Barrier, see Sheet 3.
- Minimum temporary sheet pile Section Modulus = 18.0 in³/ft and F_y = 39,000 psi.
- If the Contractor chooses to alter the temporary cantilevered sheet piling design requirements shown on the plans, a design submittal including plan details and calculations will be required for review and acceptance by the Engineer.
- The Contractor shall connect the first sheet to the existing abutment wall to ensure stability of sheets driven to the top of the existing footing. This connection shall be reviewed and accepted by the Engineer and included in the cost for Temporary Sheet Piling.

DESIGNED	TML
CHECKED	GLH
DRAWN	RJN
CHECKED	GLH

R-27 4-30-97

CONSTRUCTION STAGING PLANS
ILLINOIS ROUTE 13WB OVER
PILES FORK CREEK
FAP ROUTE 331 - SEC. 5B-3
JACKSON COUNTY
STATION 86+40.00
STRUCTURE NO. 039-2026