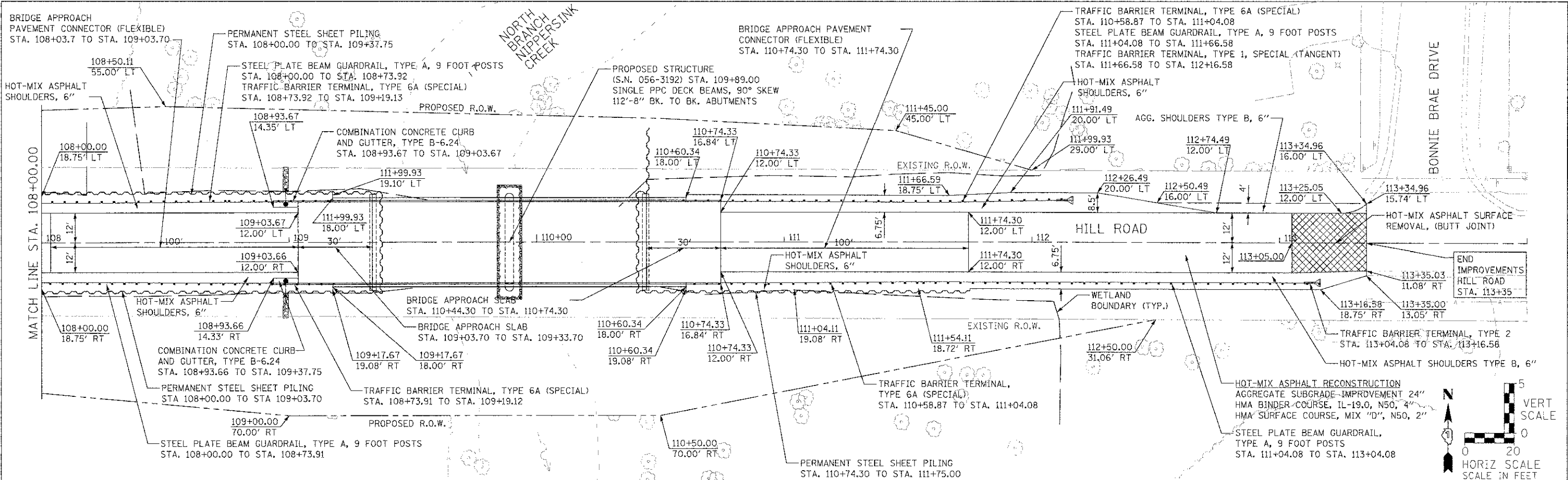
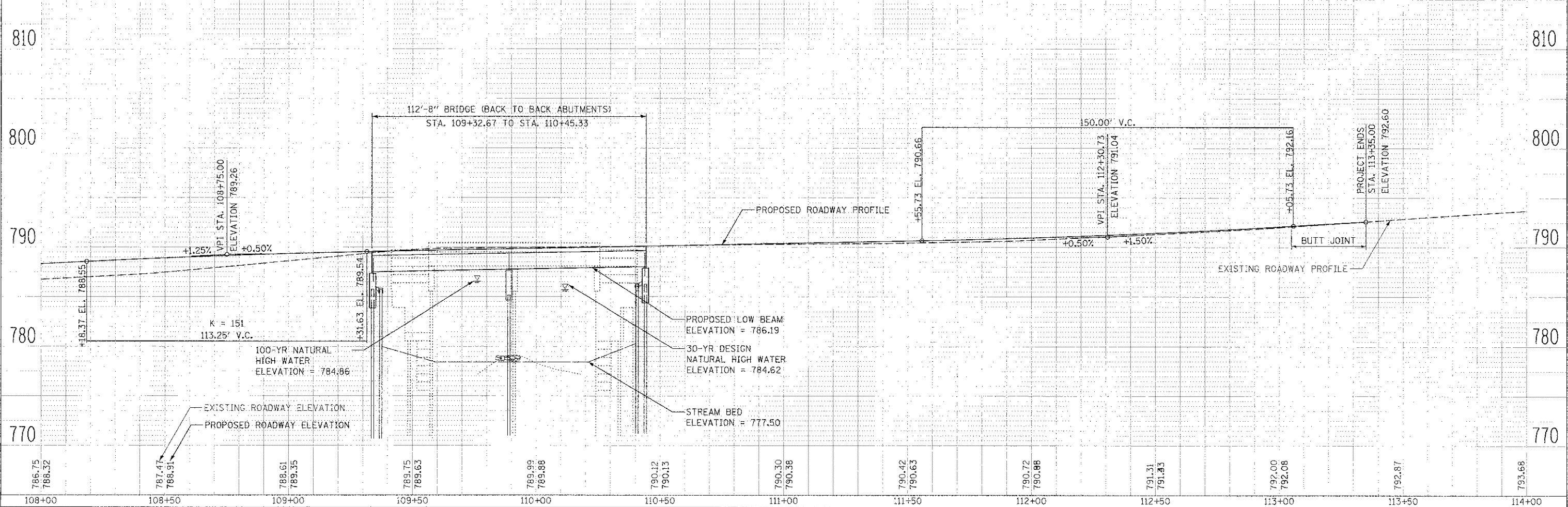


DATE	
BY	
REVISION	
NO.	
DESCRIPTION	
DATE	
BY	
REVISION	
NO.	
DESCRIPTION	
DATE	
BY	
REVISION	
NO.	
DESCRIPTION	



DATE	
BY	
REVISION	
NO.	
DESCRIPTION	
DATE	
BY	
REVISION	
NO.	
DESCRIPTION	
DATE	
BY	
REVISION	
NO.	
DESCRIPTION	



108+00	108+50	109+00	109+50	110+00	110+50	111+00	111+50	112+00	112+50	113+00	113+50	114+00
786.75 786.32	787.47 786.91	788.61 788.35	789.75 789.63	789.99 789.88	790.12 790.13	790.30 790.38	790.42 790.63	790.72 790.88	791.31 791.83	792.00 792.08	792.87	793.68

DESIGNED - VLM	REVISIONS -	<b>MCHENRY COUNTY DIVISION OF TRANSPORTATION</b> <b>HILL ROAD BRIDGE OVER</b> <b>NORTH BRANCH NIPPERSINK CREEK</b>	TR	SECTION	COUNTY	TOTAL SHEETS	SHEET NO.
DRAWN - DJW	REVISIONS -		21	08-00356-00-BR	MCHENRY	77	14
CHECKED - AJS	REVISIONS -		CONTRACT NO. 63666				
DATE - 4-23-12	REVISIONS -		FED. ROAD DIST. NO. 1 ILLINOIS FED. AID PROJECT				

SCALE: AS SHOWN	SHEET NO.	CF	SHEETS	STA. 108+00.00 TO STA. 114+00.00
-----------------	-----------	----	--------	----------------------------------

1170 SOUTH HARBOLT ROAD  
JOLIET, ILLINOIS 60431  
(815) 744-4200

USER NAME = dennis  
PLOT SCALE = 20,000 / IN.  
PLOT DATE = 8/23/2012

**PLAN AND PROFILE**