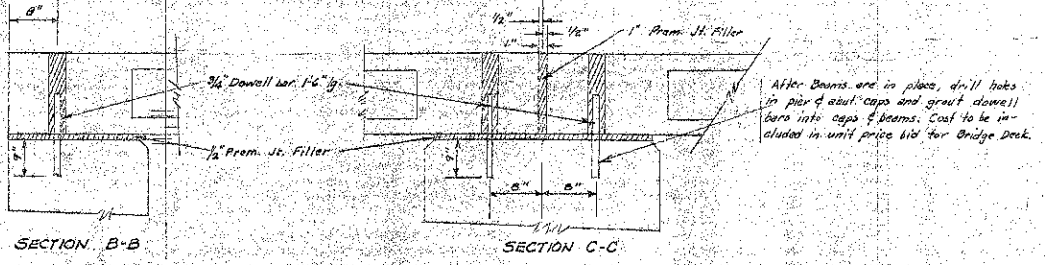
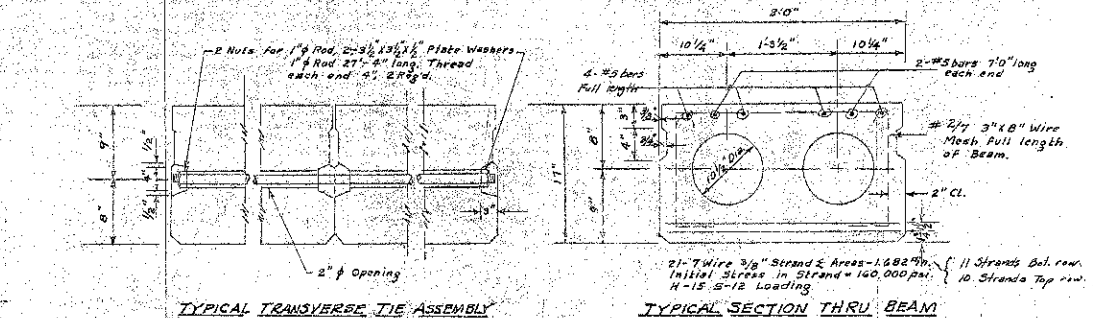
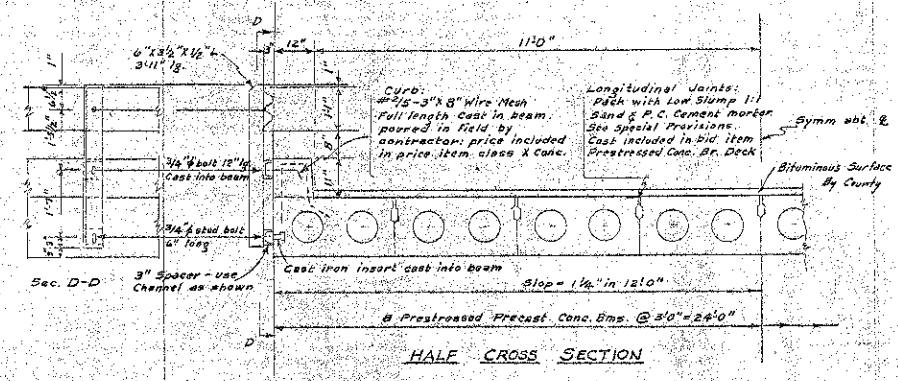
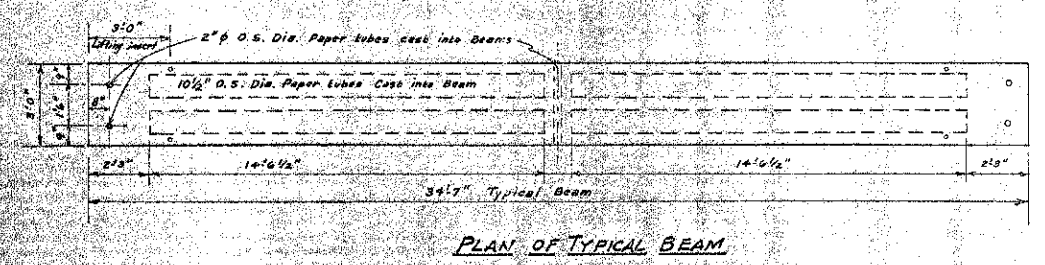
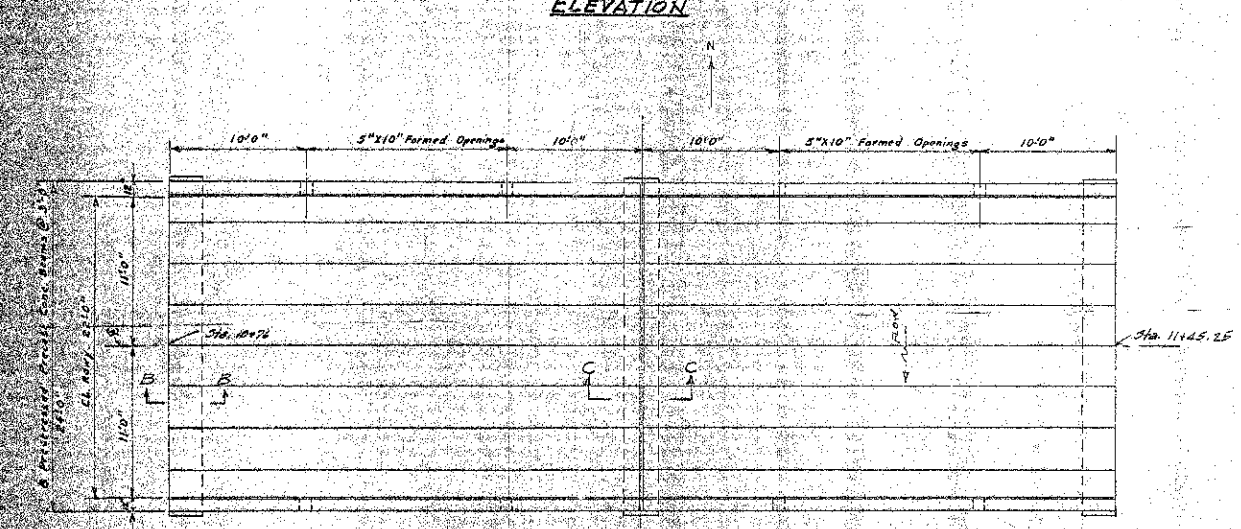
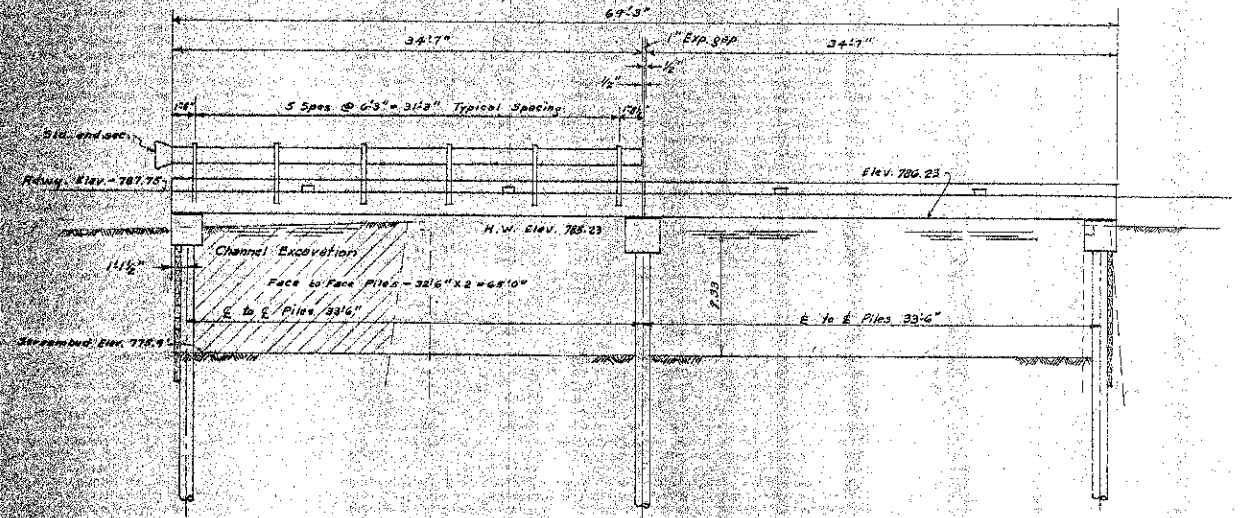


B.M. Concrete base of wood fence post south side of road Sta. 7+40 Elev. 791.79
 Existing Structure: Steel pin connected truss (in creek)
 1 span @ 30' W roadway, wood floor
 Concrete abutments, field stone wings



GENERAL NOTES
 Class X Concrete shall be used for pile caps and curbs.
 For Item "Prestressed Concrete Bridge Deck," see Special Provisions.
 Hendrail shall be paid for as "Metal Plate Bridge Rail" and shall include end posts, staves, channels, bolts, nuts, and washers required for splicing and fastening to bridge. Hendrail shall receive one shop coat of red lead paint and two field coats of aluminum paint. Paint shall be furnished and applied by the contractor.
 Metal Plate Bridge Rail shall be in accordance with Section 94A of the Supplemental Specifications.
 Excavation for backing shall be made before driving piles.
 The contractor shall drive one test pile as part of the permanent pile group before ordering the remainder of the piles.
 For backfill behind abutments, see Article 5010 of the Standard Specs.
 All Timber and hardware shall conform to Sections 50 and 125 of the Standard Specifications.
 Quantities of lumber are based on sizes and lengths shown. No additional compensation shall be allowed for waste.

TOTAL BILL OF MATERIAL

ITEM	UNIT	TOTAL
Prestressed Concrete Bridge Deck	Sq. Ft.	1,170
Class X Concrete (14.8 Cps. + 4.6 Curbs)	Cu. Yds.	17.5
Reinforcement Bars	Lbs.	2,330
Metal Plate Bridge Rail	Lin. Ft.	1,170
Hardware	Lbs.	1,170
Treated Timber	F. B. M.	1,170
Furnishing Crossties 20' x 36'	Lin. Ft.	1,170
Driving Timber Piles (25' lg)	Lin. Ft.	1,170
Furnishing Metal Pile Shells	Lin. Ft.	1,170
Driving and Filling Shells (30' lg)	Lin. Ft.	1,170
Test Piles (Crossties Timber)	Each	1
Removal of Existing Structures	Each	1
Name Plates	Each	1
Channel Excavation	Cu. Yds.	1

WATERWAY INFORMATION
 Drainage Area 42,500 Acres
 Character Level, rolling, wooded, cultivated
 Present Opening 432 Sq. Ft.
 Proposed Opening 606 Sq. Ft.
 LOADING H-15-S12

15 HILL BRIDGE
 RICHMOND TOWNSHIP
 MSHERY CREEK

For Information only

FILE NAME = s:\proj\6800-6893\6842\087\micro\acadd\sheet\structural\056-3192-63666-027-1.dwg