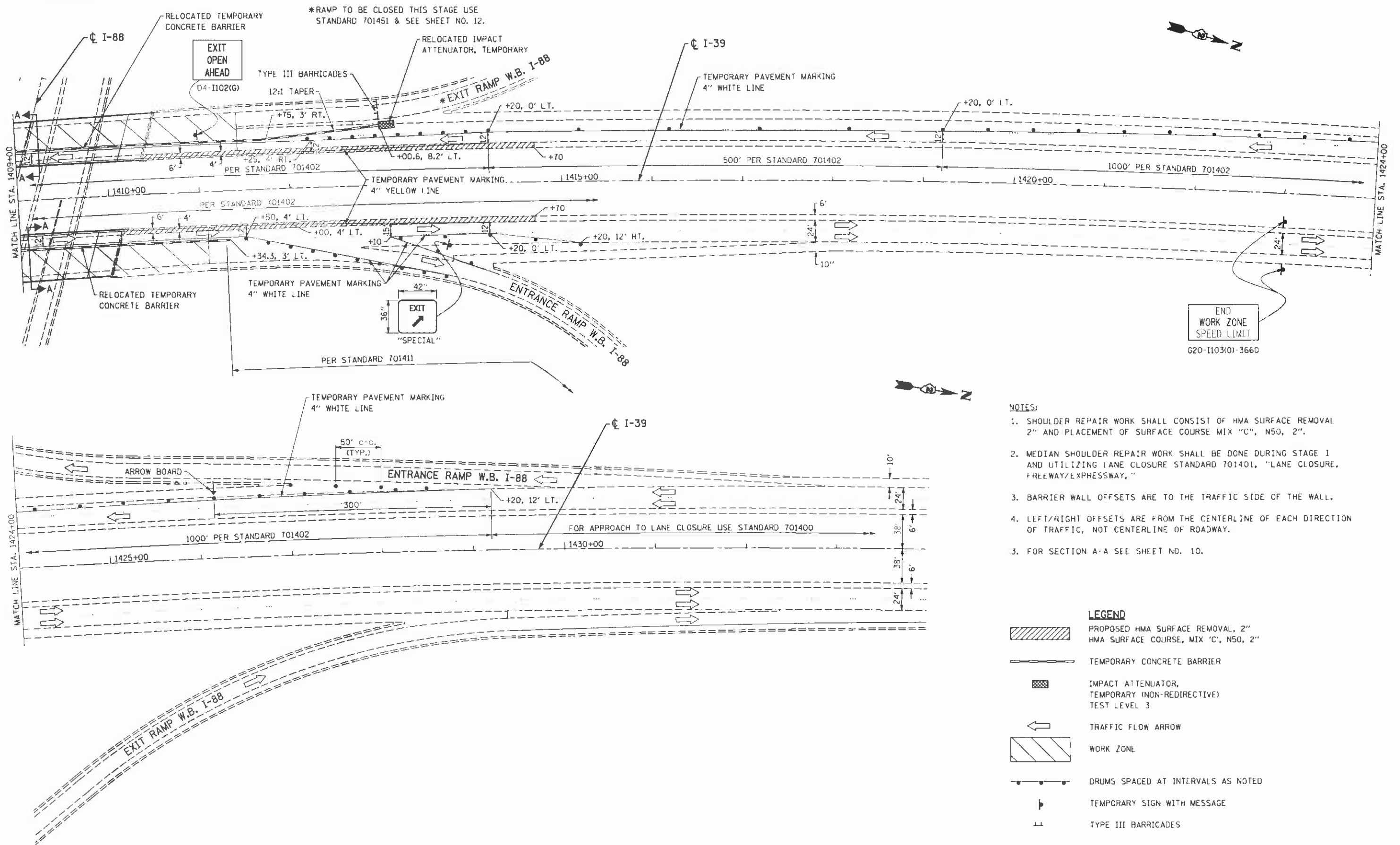


DATE	
BY	
SURVEYED	
PLOTTED	
NOTE BOOK	
AREAS CHECKED	
NO.	









DATE	
BY	
SURVEYED	
PLOTTED	
NOTE BOOK	
AREAS CHECKED	
NO.	



NOTES:

1. SHOULDER REPAIR WORK SHALL CONSIST OF HMA SURFACE REMOVAL 2" AND PLACEMENT OF SURFACE COURSE MIX "C", N50, 2".
2. MEDIAN SHOULDER REPAIR WORK SHALL BE DONE DURING STAGE I AND UTILIZING LANE CLOSURE STANDARD 701401, "LANE CLOSURE, FREEWAY/EXPRESSWAY."
3. BARRIER WALL OFFSETS ARE TO THE TRAFFIC SIDE OF THE WALL.
4. LEFT/RIGHT OFFSETS ARE FROM THE CENTERLINE OF EACH DIRECTION OF TRAFFIC, NOT CENTERLINE OF ROADWAY.
5. FOR SECTION A-A SEE SHEET NO. 10.

LEGEND

-  PROPOSED HMA SURFACE REMOVAL, 2" HMA SURFACE COURSE, MIX 'C', N50, 2"
-  TEMPORARY CONCRETE BARRIER
-  IMPACT ATTENUATOR, TEMPORARY (NON-REDIRECTIVE) TEST LEVEL 3
-  TRAFFIC FLOW ARROW
-  WORK ZONE
-  DRUMS SPACED AT INTERVALS AS NOTED
-  TEMPORARY SIGN WITH MESSAGE
-  TYPE III BARRICADES

FILE NAME : wht-stage2.02.dgn
 PLOT DATE : 8/7/2012
 PLOT SCALE : 58.8888 / IN.



CHRISTIAN-RIDGE & ASSOCIATES, INC.
 ENGINEERS-PLANNERS-SURVEYORS
 211 WEST WACKER DRIVE
 CHICAGO, ILLINOIS 60606
 PHONE: (312)372-2023 FAX: (312)372-5274

DESIGNED	E.M.	REVISED	
DRAWN	B.K.	REVISED	
CHECKED	G.F.L.	REVISED	
DATE	AUGUST 2012	REVISED	

STATE OF ILLINOIS
DEPARTMENT OF TRANSPORTATION

TRAFFIC CONTROL AND PROTECTION
I-39 OVER I-88
STAGE II

SCALE: SHEET NO. OF SHEETS STA. TO STA.

F.A.I. R.T.E.	SECTION	COUNTY	TOTAL SHEETS	SHEET NO.
39	D2 DECK REPAIR 2013-1	OGLE	32	11
FED. ROAD DIST. NO. 1 (ILLINOIS) FED. AID PROJECT			CONTRACT NO. 64H73	

MOT-04