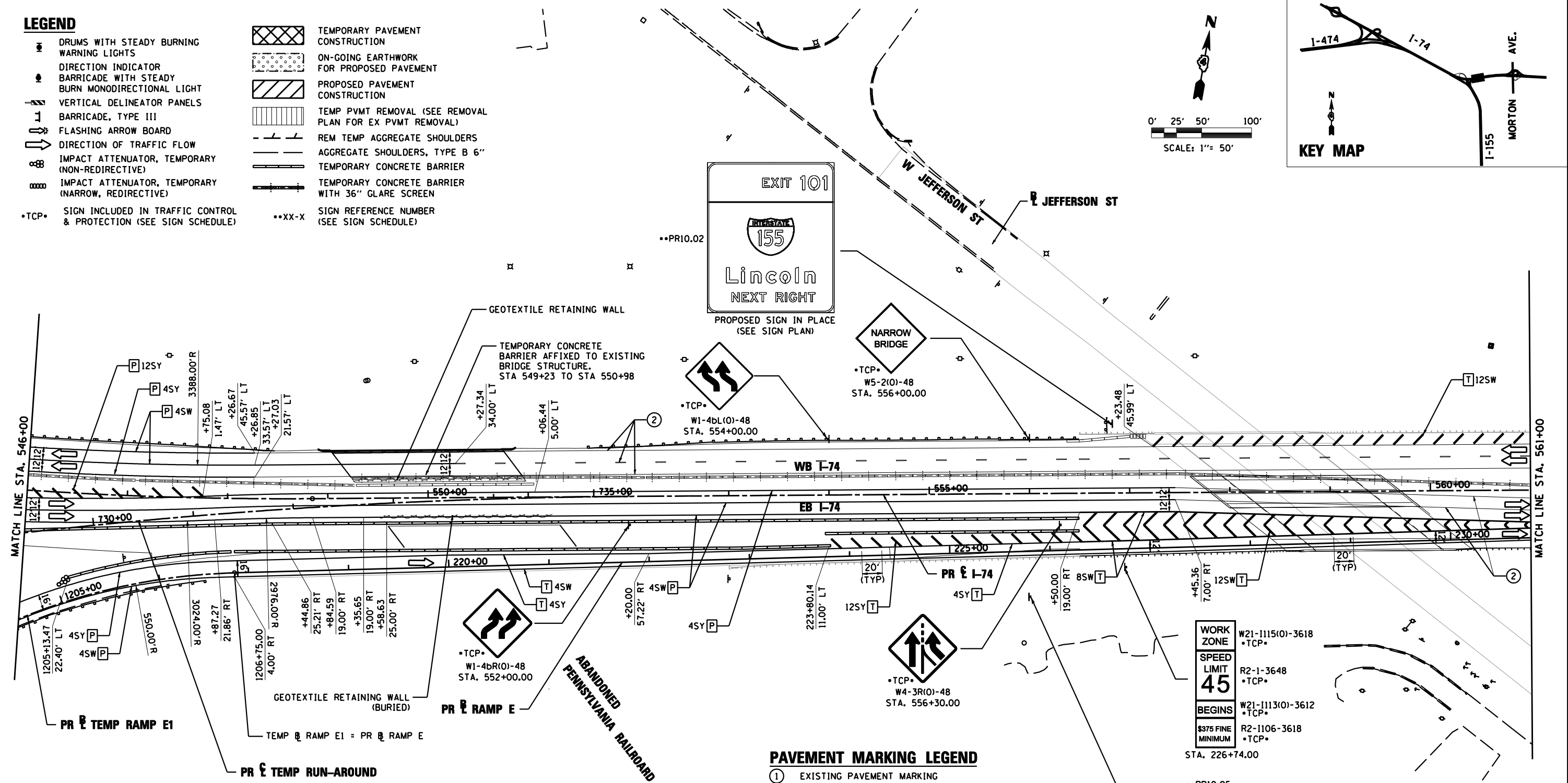
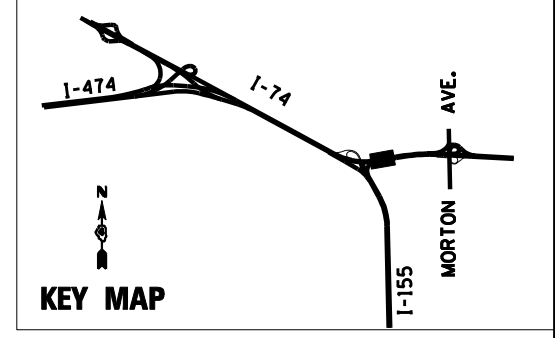
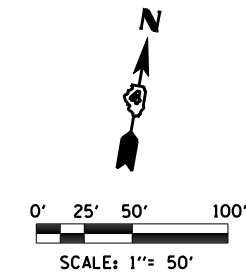


**LEGEND**

- DRUMS WITH STEADY BURNING WARNING LIGHTS
- DIRECTION INDICATOR
- BARRICADE WITH STEADY BURN MONODIRECTIONAL LIGHT
- VERTICAL DELINEATOR PANELS
- BARRICADE, TYPE III
- FLASHING ARROW BOARD
- DIRECTION OF TRAFFIC FLOW
- IMPACT ATTENUATOR, TEMPORARY (NON-REDIRECTIVE)
- IMPACT ATTENUATOR, TEMPORARY (NARROW, REDIRECTIVE)
- \*TCP\* SIGN INCLUDED IN TRAFFIC CONTROL & PROTECTION (SEE SIGN SCHEDULE)
- TEMPORARY PAVEMENT CONSTRUCTION
- ON-GOING EARTHWORK FOR PROPOSED PAVEMENT
- PROPOSED PAVEMENT CONSTRUCTION
- TEMP PVT REMOVAL (SEE REMOVAL PLAN FOR EX PVT REMOVAL)
- REM TEMP AGGREGATE SHOULDERS
- AGGREGATE SHOULDERS, TYPE B 6"
- TEMPORARY CONCRETE BARRIER
- TEMPORARY CONCRETE BARRIER WITH 36" GLARE SCREEN
- \*\*XX-X SIGN REFERENCE NUMBER (SEE SIGN SCHEDULE)



**PAVEMENT MARKING LEGEND**

- ① EXISTING PAVEMENT MARKING
  - ② TEMPORARY PAVEMENT MARKING FROM PREVIOUS STAGE
  - ③ PROPOSED PAVEMENT MARKING IN PLACE (SEE PROPOSED PAVEMENT MARKING PLAN)
  - T PAVEMENT MARKING TAPE, TYPE III
  - P POLYUREA PAVEMENT MARKING TYPE II
- |   |                                     |
|---|-------------------------------------|
| 4SW 4" SOLID WHITE                          | 8SW 8" SOLID WHITE                  |
| 4SY 4" SOLID YELLOW                         | 12SW 12" SOLID WHITE @ 20' SPACING  |
| 4SY 4" SOLID DOUBLE YELLOW (11" C-C)        | 12SY 12" SOLID YELLOW @ 20' SPACING |
| 4KW 4" SKIP-DASH WHITE (30' SKIP, 10' DASH) | 24SW 24" SOLID WHITE STOP BAR       |
| 4DW 4" DOTTED WHITE (9' SKIP, 3' DASH)      | LSW LETTERS & SYMBOLS, WHITE        |

**WORK ZONE** W21-1115(0)-3618 \*TCP\*

**SPEED LIMIT** 45 \*TCP\*

**BEGINS** W21-1113(0)-3612 \*TCP\*

**\$375 FINE MINIMUM** R2-1106-3618 \*TCP\*

STA. 226+74.00

\*\*PR10.05

**FOOD**

PROPOSED SIGN IN PLACE (SEE SIGN PLAN)

FILE NAME =	DESIGNED - HTL	REVISED -
D468620-shr-staging10 174-04WS1.dgn	DRAWN - JPS	REVISED -
USER NAME = TERRA	CHECKED - DA/LVA	REVISED -
PLOT DATE = 7/16/2012	DATE - 7/20/2012	REVISED -



**STATE OF ILLINOIS  
DEPARTMENT OF TRANSPORTATION**

**MAINTENANCE OF TRAFFIC  
2013 WINTER SHUTDOWN**

SCALE: SHEET NO. 9 OF 19 SHEETS STA. 546+00 TO STA. 561+00

F.A.I. RTE.	SECTION	COUNTY	TOTAL SHEETS	SHEET NO.
90-[14R(14HB-4,14,14HVB)BR]	TAZEWELL	2433	802	
CONTRACT NO. 68620				