

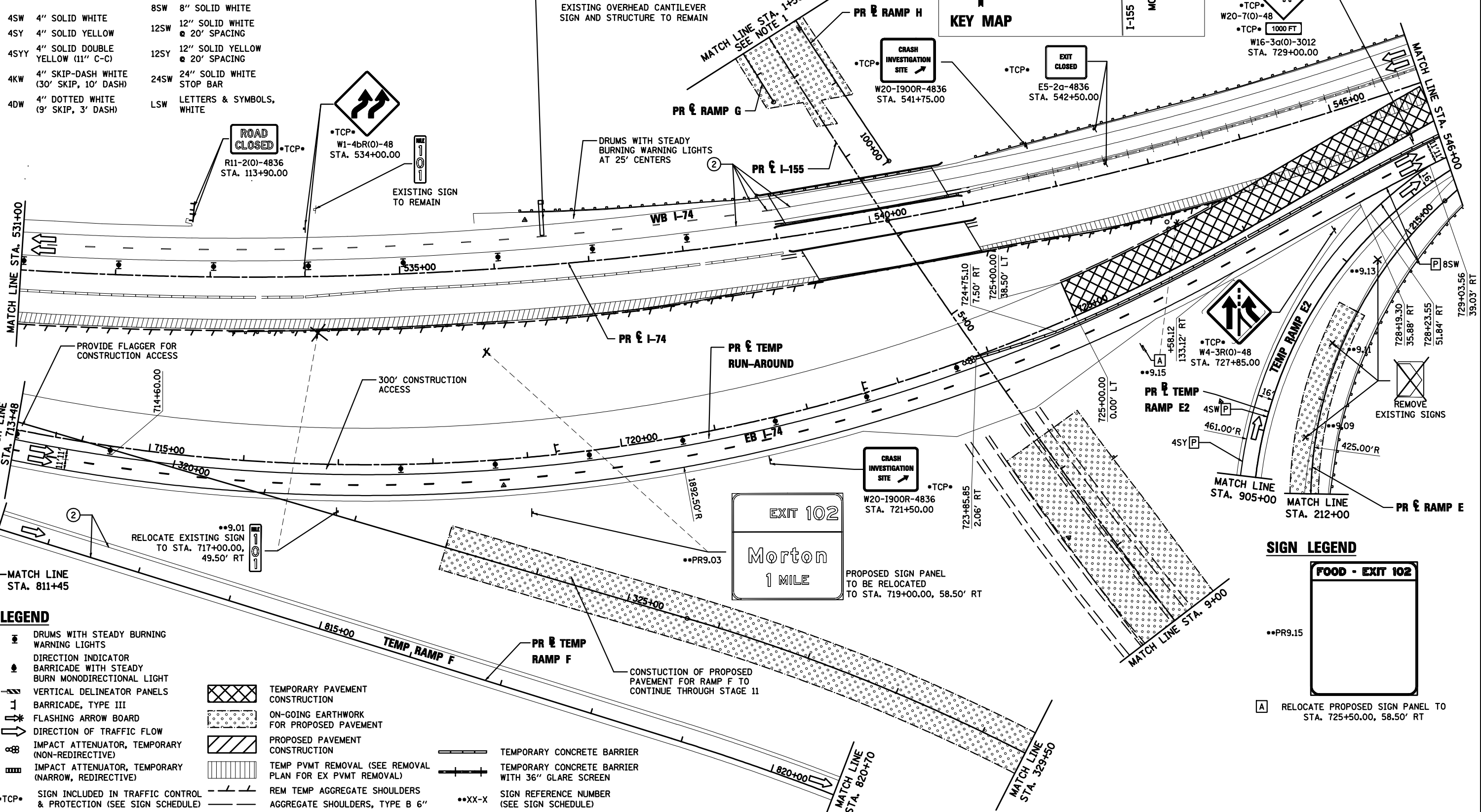
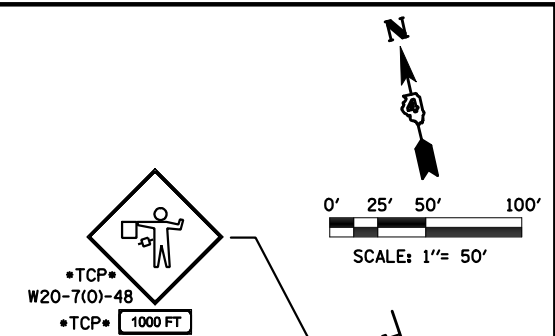
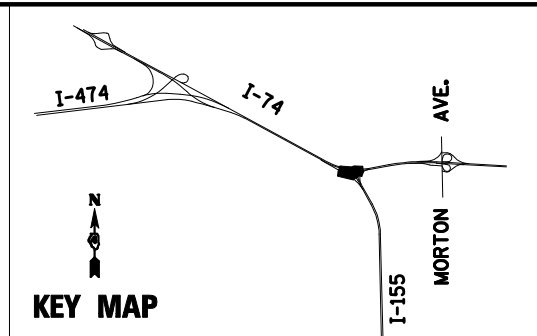
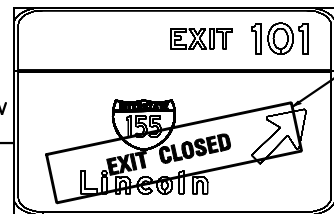
**PAVEMENT MARKING LEGEND**

- ① EXISTING PAVEMENT MARKING
- ② TEMPORARY PAVEMENT MARKING FROM PREVIOUS STAGE
- ③ PROPOSED PAVEMENT MARKING IN PLACE (SEE PROPOSED PAVEMENT MARKING PLAN)
- T PAVEMENT MARKING TAPE, TYPE III
- P POLYUREA PAVEMENT MARKING TYPE II

- |   |                                     |
|---|-------------------------------------|
| 4SW 4" SOLID WHITE                          | 8SW 8" SOLID WHITE                  |
| 4SY 4" SOLID YELLOW                         | 12SW 12" SOLID WHITE @ 20' SPACING  |
| 4SY 4" SOLID DOUBLE YELLOW (11" C-C)        | 12SY 12" SOLID YELLOW @ 20' SPACING |
| 4KW 4" SKIP-DASH WHITE (30' SKIP, 10' DASH) | 24SW 24" SOLID WHITE STOP BAR       |
| 4DW 4" DOTTED WHITE (9' SKIP, 3' DASH)      | LSW LETTERS & SYMBOLS, WHITE        |

**NOTE**

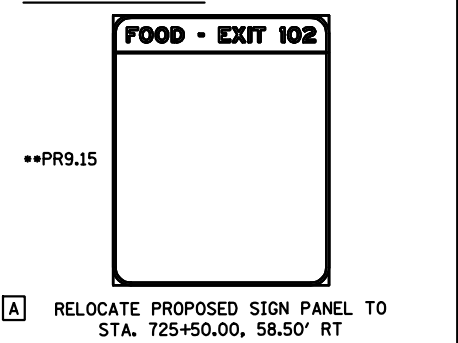
1. ON-GOING WORK ON RAMP G & H. SEE PROPOSED GEOMETRY PLANS



**LEGEND**

- DRUMS WITH STEADY BURNING WARNING LIGHTS
- ◆ DIRECTION INDICATOR BARRICADE WITH STEADY BURN MONODIRECTIONAL LIGHT
- ▬ VERTICAL DELINEATOR PANELS
- ⊥ BARRICADE, TYPE III
- ⚡ FLASHING ARROW BOARD
- ➡ DIRECTION OF TRAFFIC FLOW
- ⊘ IMPACT ATTENUATOR, TEMPORARY (NON-REDIRECTIVE)
- ⊘ IMPACT ATTENUATOR, TEMPORARY (NARROW, REDIRECTIVE)
- TCP• SIGN INCLUDED IN TRAFFIC CONTROL & PROTECTION (SEE SIGN SCHEDULE)
- ▨ TEMPORARY PAVEMENT CONSTRUCTION
- ▨ ON-GOING EARTHWORK FOR PROPOSED PAVEMENT
- ▨ PROPOSED PAVEMENT CONSTRUCTION
- ▨ TEMP PVMT REMOVAL (SEE REMOVAL PLAN FOR EX PVMT REMOVAL)
- ▨ REM TEMP AGGREGATE SHOULDERS
- ▨ AGGREGATE SHOULDERS, TYPE B 6"
- ▬ TEMPORARY CONCRETE BARRIER
- ▬ TEMPORARY CONCRETE BARRIER WITH 36" GLARE SCREEN
- XX-X SIGN REFERENCE NUMBER (SEE SIGN SCHEDULE)

**SIGN LEGEND**



FILE NAME = D468620-shr-staging09 174-06.dgn	DESIGNED - HTL	REVISED -
USER NAME = TERRA	DRAWN - JPS	REVISED -
PLOT DATE = 7/16/2012	CHECKED - DA/LVA	REVISED -
	DATE - 7/20/2012	REVISED -



**STATE OF ILLINOIS  
DEPARTMENT OF TRANSPORTATION**

**MAINTENANCE OF TRAFFIC  
STAGE 6**

SCALE: SHEET NO. 12 OF 18 SHEETS STA. 531+00 TO STA. 546+00

F.A.I. RTE.	SECTION	COUNTY	TOTAL SHEETS	SHEET NO.
	90-[14R(14HB-4,14,14HV8)/BR]	TAZEWELL	2433	855
CONTRACT NO. 68620			ILLINOIS FED. AID PROJECT	