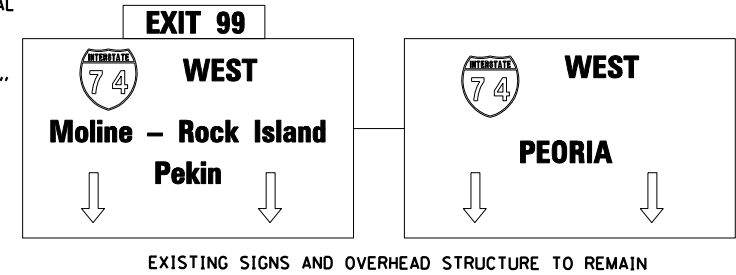
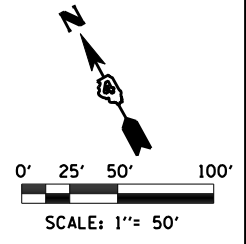
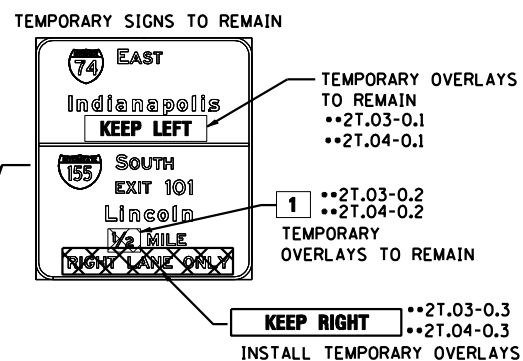
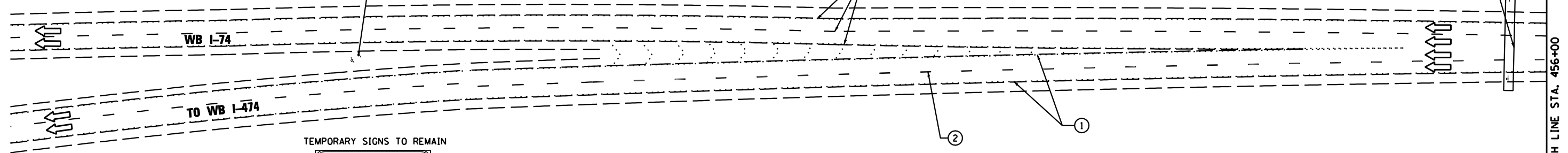
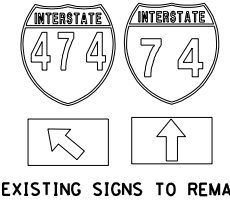


LEGEND

- DRUMS WITH STEADY BURNING WARNING LIGHTS
- ⬇ DIRECTION INDICATOR BARRICADE WITH STEADY BURN MONODIRECTIONAL LIGHT
- ▨ VERTICAL DELINEATOR PANELS
- ⊥ BARRICADE, TYPE III
- ↔ FLASHING ARROW BOARD
- ➔ DIRECTION OF TRAFFIC FLOW
- ⊘ IMPACT ATTENUATOR, TEMPORARY (NON-REDIRECTIVE)
- ⊘ IMPACT ATTENUATOR, TEMPORARY (NARROW, REDIRECTIVE)
- TCP• SIGN INCLUDED IN TRAFFIC CONTROL & PROTECTION (SEE SIGN SCHEDULE)
- ▨ TEMPORARY PAVEMENT CONSTRUCTION
- ▨ ON-GOING EARTHWORK FOR PROPOSED PAVEMENT
- ▨ PROPOSED PAVEMENT CONSTRUCTION
- ▨ TEMP PVMT REMOVAL (SEE REMOVAL PLAN FOR EX PVMT REMOVAL)
- ▨ REM TEMP AGGREGATE SHOULDERS
- ▨ AGGREGATE SHOULDERS, TYPE B 6"
- ▨ TEMPORARY CONCRETE BARRIER
- ▨ TEMPORARY CONCRETE BARRIER WITH 36" GLARE SCREEN
- XX-X SIGN REFERENCE NUMBER (SEE SIGN SCHEDULE)

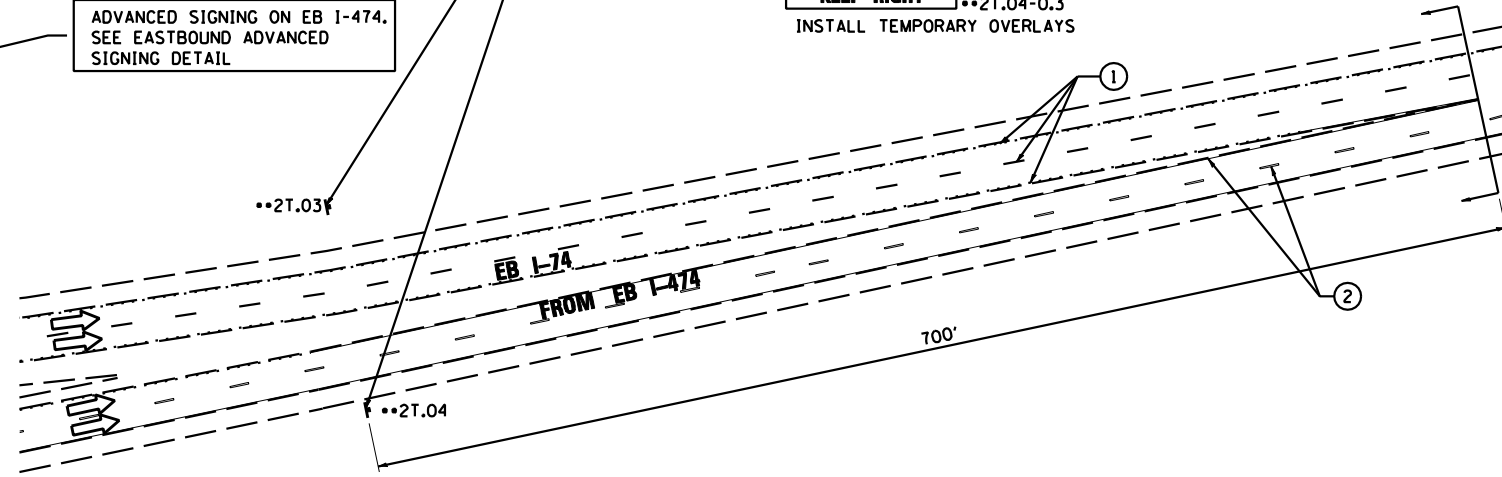


ALL DETOUR SIGNS TO BE REMOVED
SEE RAMP G AND RAMP H DETOUR PLAN

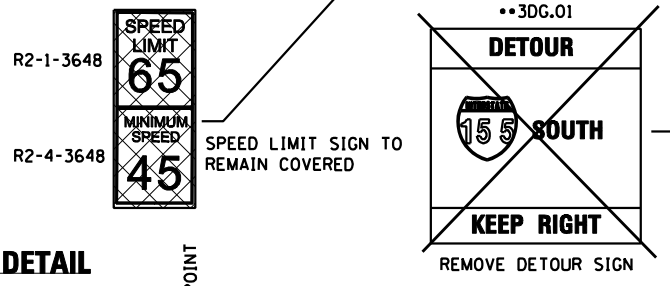
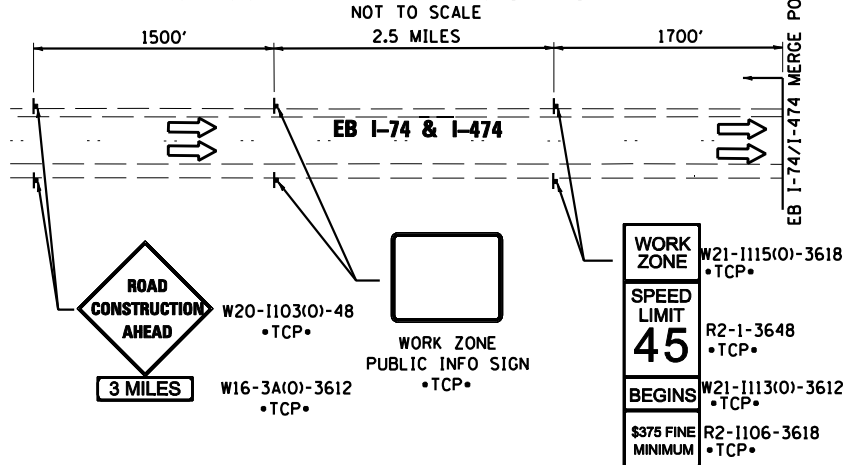


ADVANCED SIGNING ON EB I-474.
SEE EASTBOUND ADVANCED SIGNING DETAIL

EB I-74/I-474 MERGE POINT



EASTBOUND ADVANCED SIGNING DETAIL



PAVEMENT MARKING LEGEND

- ① EXISTING PAVEMENT MARKING
- ② PAVEMENT MARKING FROM PREVIOUS STAGE
- ③ PROPOSED PAVEMENT MARKING IN PLACE (SEE PROPOSED PAVEMENT MARKING PLAN)
- T PAVEMENT MARKING TAPE, TYPE III
- P POLYUREA PAVEMENT MARKING TYPE II
- 4SW 4" SOLID WHITE
- 4SY 4" SOLID YELLOW
- 4SY 4" SOLID DOUBLE YELLOW (11" C-C)
- 4KW 4" SKIP-DASH WHITE (30' SKIP, 10' DASH)
- 4DW 4" DOTTED WHITE (9' SKIP, 3' DASH)
- 8SW 8" SOLID WHITE
- 12SW 12" SOLID WHITE @ 20' SPACING
- 12SY 12" SOLID YELLOW @ 20' SPACING
- 24SW 24" SOLID WHITE STOP BAR
- LSW LETTERS AND SYMBOLS, WHITE

FILE NAME =	DESIGNED - HTL	REVISED -
D468620-shd-staging02 174-12WS2.dgn	DRAWN - JPS	REVISED -
USER NAME = TERRA	CHECKED - DA/LVA	REVISED -
PLOT DATE = 7/16/2012	DATE - 7/20/2012	REVISED -



STATE OF ILLINOIS
DEPARTMENT OF TRANSPORTATION

MAINTENANCE OF TRAFFIC
2013 WINTER SHUTDOWN

SCALE: SHEET NO. 3 OF 21 SHEETS STA. - TO STA. 456+00

F.A.I. RTE.	SECTION	COUNTY	TOTAL SHEETS	SHEET NO.
•	90-[14R(14HB-4,14,14HVB)BR]	TAZEWELL	2433	1160
CONTRACT NO. 68620			ILLINOIS FED. AID PROJECT	