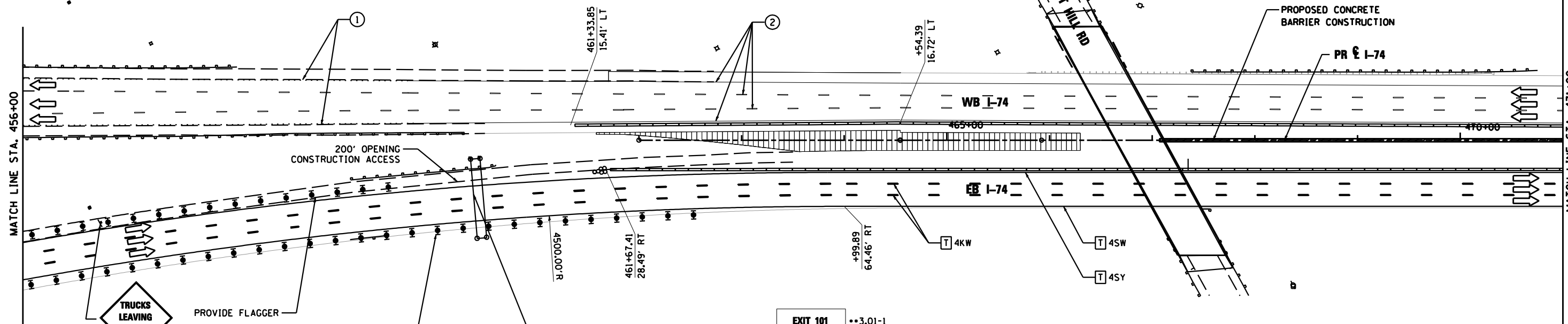
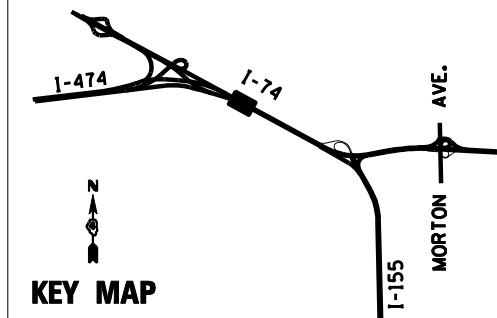
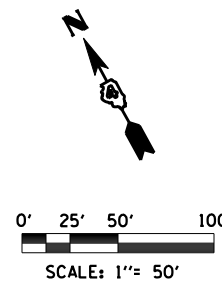
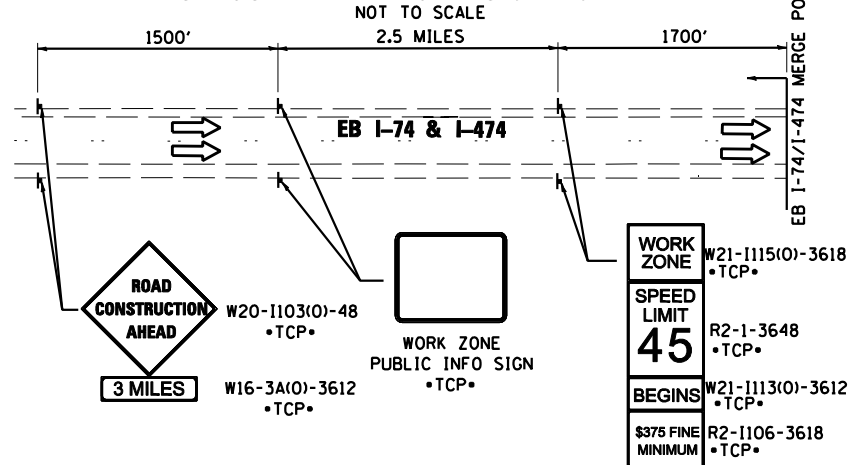


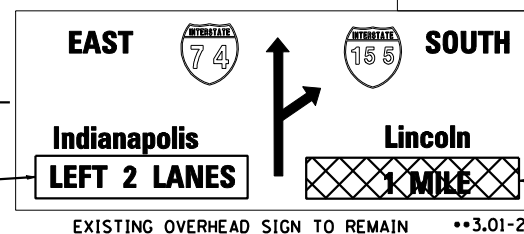
EASTBOUND ADVANCED SIGNING DETAIL



TRUCKS LEAVING HIGHWAY
•TCP•
W20-1105(O)-48
600' IN ADVANCE
OF CONSTRUCTION
ACCESS OPENING

PROVIDE FLAGGER
DRUMS WITH STEADY BURNING
WARNING LIGHTS AT 25' CENTERS (TYP)

••3.01-2.3
REINSTALL SIGN OVERLAY
FROM WINTER SHUTDOWN 2014



••3.01-2.4
REINSTALL SIGN OVERLAY
FROM WINTER SHUTDOWN 2014

PAVEMENT MARKING LEGEND

| | | | | | |
|---|---|------|---|------|--------------------------------|
| ① | EXISTING PAVEMENT MARKING | 4SW | 4" SOLID WHITE | 8SW | 8" SOLID WHITE |
| ② | PAVEMENT MARKING FROM PREVIOUS STAGE | 4SY | 4" SOLID YELLOW | 12SW | 12" SOLID WHITE @ 20' SPACING |
| ③ | PROPOSED PAVEMENT MARKING IN PLACE (SEE PROPOSED PAVEMENT MARKING PLAN) | 4SYY | 4" SOLID DOUBLE YELLOW (11" C-C) | 12SY | 12" SOLID YELLOW @ 20' SPACING |
| T | PAVEMENT MARKING TAPE, TYPE III | 4KW | 4" SKIP-DASH WHITE (30' SKIP, 10' DASH) | 24SW | 24" SOLID WHITE STOP BAR |
| P | POLYUREA PAVEMENT MARKING TYPE II | 4DW | 4" DOTTED WHITE (9' SKIP, 3' DASH) | LSW | LETTERS AND SYMBOLS, WHITE |

LEGEND

| | | | |
|--|---|--|--|
| | DRUMS WITH STEADY BURNING WARNING LIGHTS | | ON-GOING EARTHWORK FOR PROPOSED PAVEMENT |
| | DIRECTION INDICATOR BARRICADE WITH STEADY BURN MONODIRECTIONAL LIGHT | | PROPOSED PAVEMENT CONSTRUCTION |
| | VERTICAL DELINEATOR PANELS | | TEMP PVMT REMOVAL (SEE REMOVAL PLAN FOR EX PVMT REMOVAL) |
| | FLASHING ARROW BOARD | | TEMPORARY CONCRETE BARRIER |
| | IMPACT ATTENUATOR, TEMPORARY (NON-REDIRECTIVE) | | TEMPORARY CONCRETE BARRIER WITH 36" GLARE SCREEN |
| | IMPACT ATTENUATOR, TEMPORARY (REDIRECTIVE) | | SIGN REFERENCE NUMBER (SEE SIGN SCHEDULE) |
| | •TCP• SIGN INCLUDED IN TRAFFIC CONTROL & PROTECTION (SEE SIGN SCHEDULE) | | |