

ALUMINUM POLE CAP

CCTV CAMERA

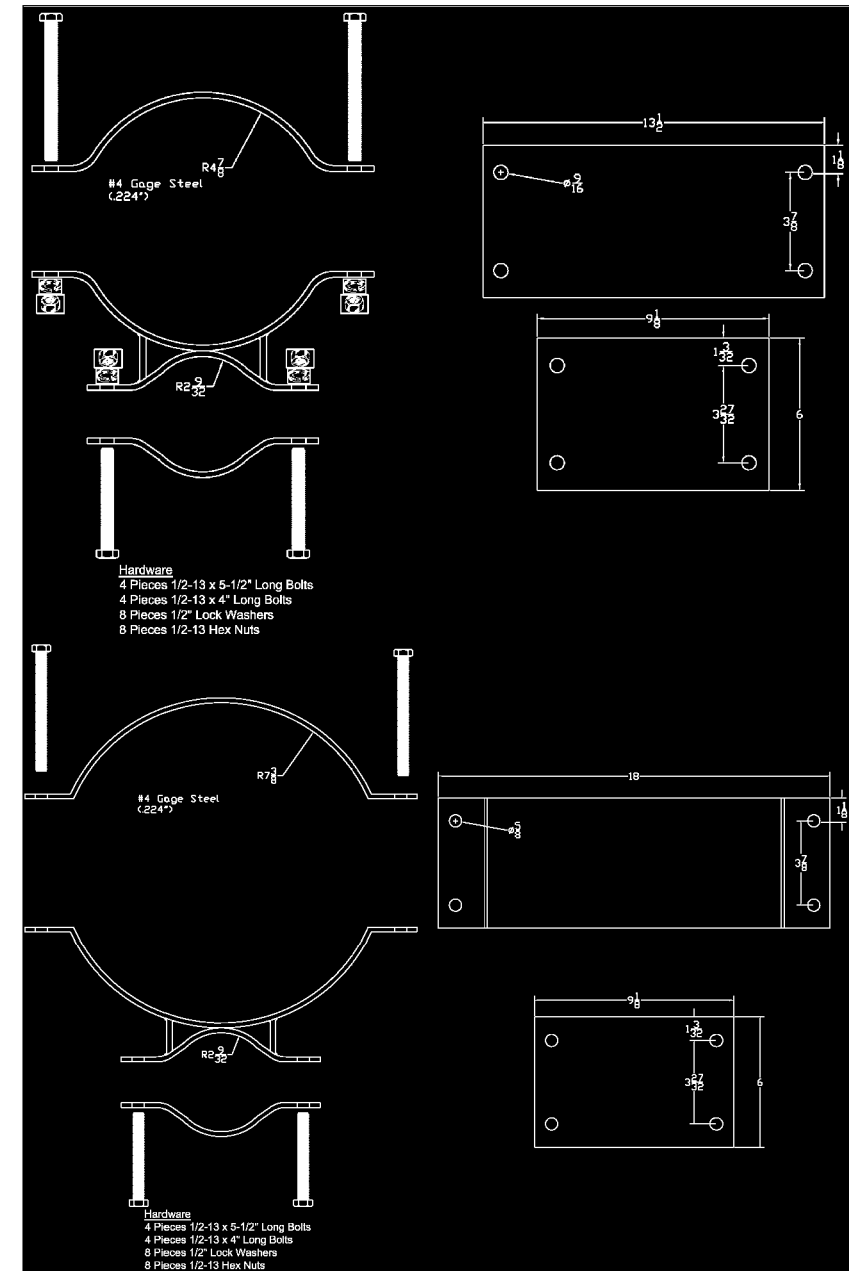
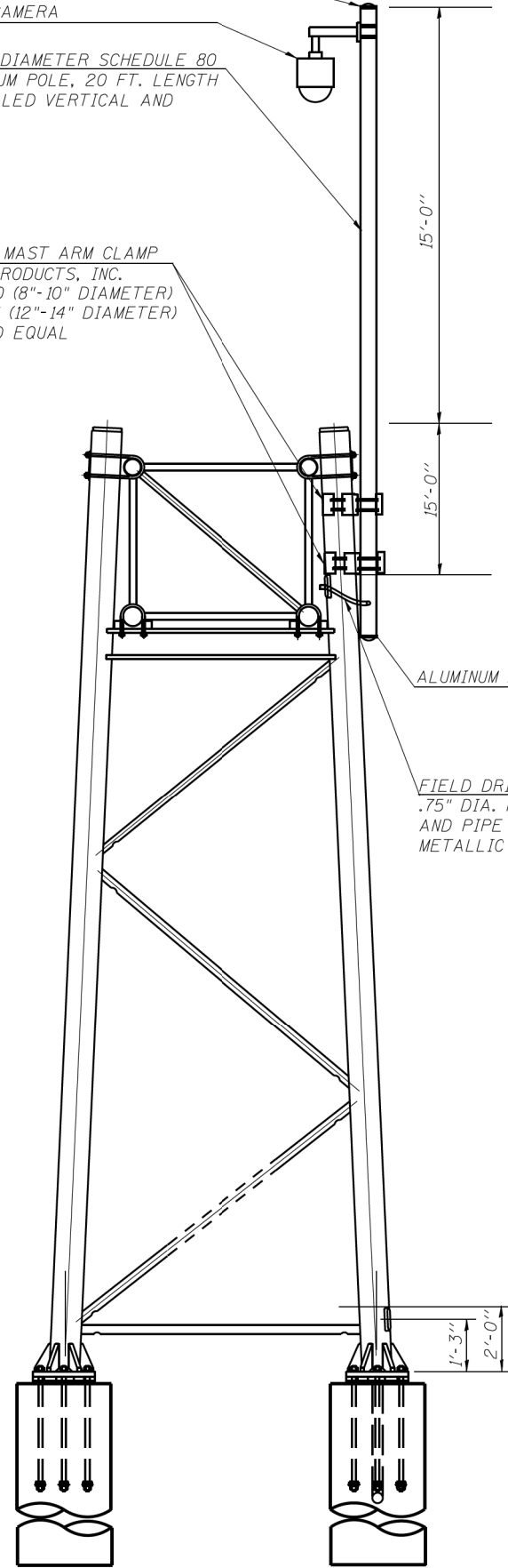
4-1/2" DIAMETER SCHEDULE 80  
ALUMINUM POLE, 20 FT. LENGTH  
(INSTALLED VERTICAL AND  
PLUMB)

ADJUSTABLE MAST ARM CLAMP  
COMPONENT PRODUCTS, INC.  
CPI-MAB-1070 (8"-10" DIAMETER)  
CPI-MAB-1071 (12"-14" DIAMETER)  
OR APPROVED EQUAL

ALUMINUM POLE CAP

FIELD DRILL  
.75" DIA. HOLE WITH GROMMET  
AND PIPE NIPPLES AND NON  
METALLIC SEAL-TITE (TYP.)

THE CONTRACTOR SHALL BE RESPONSIBLE FOR VERIFYING  
THAT THE CAMERA MAST COMPONENTS FIT CORRECTLY  
AND ARE COMPATIBLE WITH THE EXISTING SIGN STRUCTURE.  
THE COST OF FURNISHING AND INSTALLING THE CAMERA  
MAST SHALL BE INCLUDED IN THE BID PRICE FOR THE PAY  
ITEM "RELOCATE TRUSS MOUNTED SIGN STRUCTURE AND  
DMS (COMPLETE)".



FILE NAME =	USER NAME = howlder	DESIGNED -	REVISED -
pt\1-74 & 1-155 interchange\its plans\68620 - I-155 @ I-74 Interchange ITS (Final 6-12-12)		DRAWN -	REVISED -
	PLOT SCALE = 89.5781' / in.	CHECKED -	REVISED -
	PLOT DATE = 6/14/2012	DATE -	REVISED -

STATE OF ILLINOIS  
DEPARTMENT OF TRANSPORTATION

CCTV MAST FOR EXISTING SIGN STRUCTURE DETAIL  
I-74 & WASHINGTON BLACKTOP

SCALE: NONE SHEET NO. 24 OF XX SHEETS STA. TO STA.

F.A.P. RTE.	SECTION	COUNTY	TOTAL SHEETS	SHEET NO.
74	90-[I4R(14HB-4,14,14HVB)BR]	TAZEWELL	2433	1688
			CONTRACT NO. 68620	
ILLINOIS FED. AID PROJECT				