

JEFFERSON AVENUE
INTERSECTION OMISSION
STA. 591+87.02 TO STA. 593+24.62

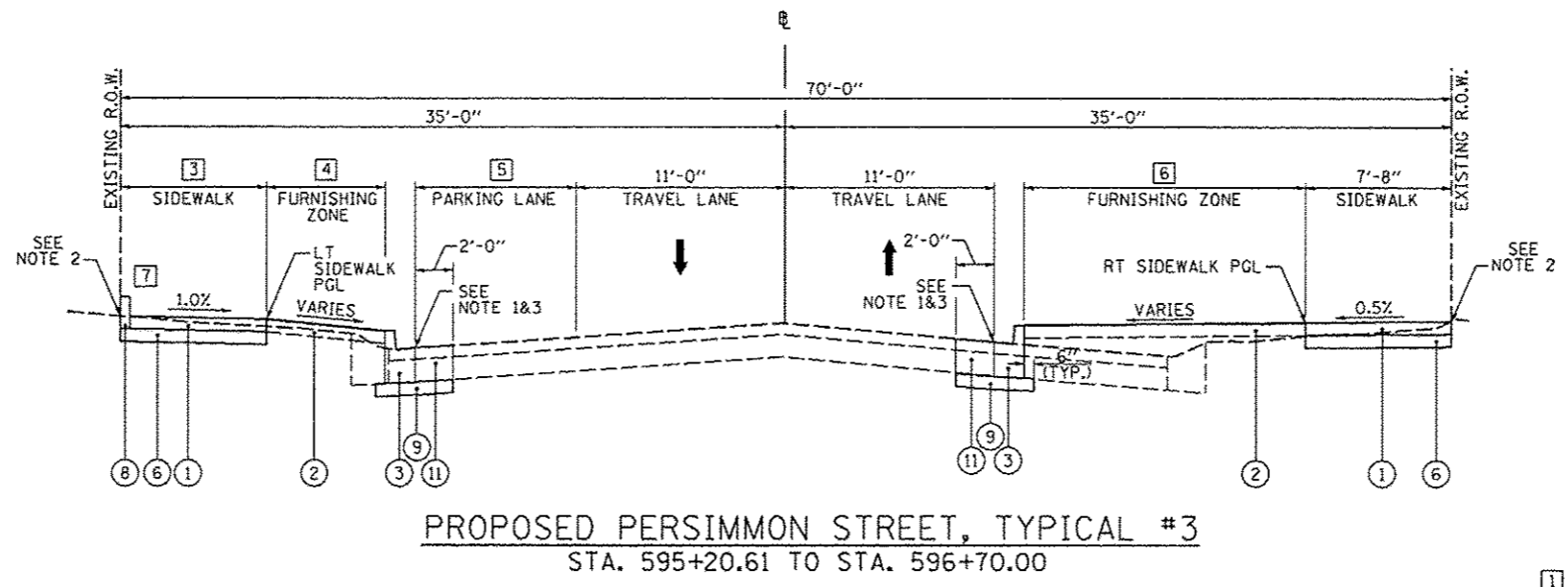
MEYER AVENUE
INTERSECTION OMISSION
STA. 595+08.05 TO STA. 595+20.61

ADAMS STREET
INTERSECTION OMISSION
STA. 597+04.49 TO STA. 597+84.60

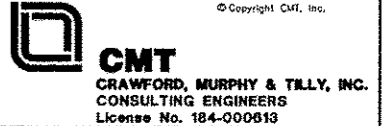
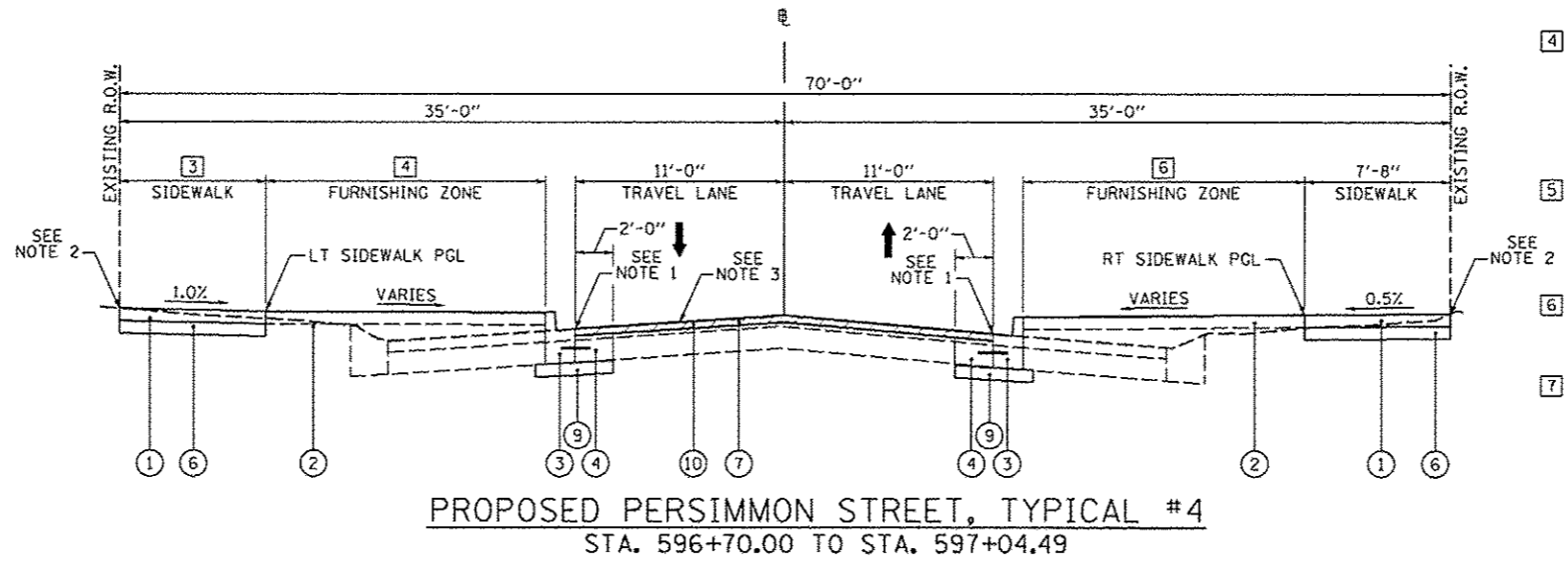
WASHINGTON STREET
INTERSECTION OMISSION
STA. 599+74.41 TO STA. 603+00.00

- NOTES:
1. PROPOSED EDGE OF CURB TO MATCH EXISTING PAVEMENT ELEVATION
 2. PROPOSED BACK OF SIDEWALK TO MATCH EXISTING ELEVATION AT R.O.W., EXCEPT: STA. 595+22.42 TO STA. 595+44.54 - TRANSITIONS FROM ELEV. 502.71 TO 502.87
 3. MATCH EXISTING PAVEMENT CROSS SLOPE

- LEGEND
- (A) EXISTING COMBINED CONCRETE CURB AND GUTTER
 - (B) EXISTING CONCRETE PAVEMENT
 - (C) EXISTING ASPHALT PAVEMENT
 - (1) PROPOSED PORTLAND CEMENT CONCRETE SIDEWALK, 4"
 - (2) PROPOSED TOPSOIL FURNISH AND PLACE, 4" AND SODDING
 - (3) PROPOSED COMBINATION CONCRETE CURB AND GUTTER, TYPE B-6.12
 - (4) PROPOSED CLASS B PATCH, TYPE IV, 10"
 - (5) PROPOSED POROUS PCC SIDEWALK, 4", SPECIAL
 - (6) PROPOSED SUBBASE GRANULAR MATERIAL, TYPE B, 4"
 - (7) PROPOSED HOT-MIX SURFACE REMOVAL, VARIABLE DEPTH
 - (8) PROPOSED CONCRETE CURB, TYPE B
 - (9) PROPOSED SUBBASE GRANULAR MATERIAL, TYPE A, 4"
 - (10) PROPOSED POLYMERIZED HOT-MIX ASPHALT SURFACE COURSE, MIX "E", N50, 2 1/4" DEPTH
 - (11) PROPOSED CLASS B PATCH, TYPE IV, 12"



- 1 EXISTING R.O.W. WIDTH
STA. 593+24.62 TO STA. 595+05.78 - 68'-6"
STA. 595+23.84 TO STA. 606+25.00 - 70'-0"
- 2 EXISTING R.O.W. TO # WIDTH
STA. 593+24.62 TO STA. 595+05.78 - 34'-3"
STA. 595+23.84 TO STA. 606+25.00 - 35'-0"
- 3 SIDEWALK WIDTH- LEFT
STA. 595+22.33 TO STA. 595+70.41 - 7'-8"
STA. 595+70.41 TO STA. 597+04.49 - TRANSITIONS FROM 7'-8" TO 7'-5"
- 4 FURNISHING ZONE WIDTH - LEFT
STA. 595+22.33 TO STA. 595+35.88 - TRANSITIONS FROM 0'-0" TO 14'-9"
STA. 595+35.88 TO STA. 595+87.55 - 14'-9"
STA. 595+87.55 TO STA. 596+08.47 - TRANSITIONS FROM 14'-9" TO 6'-3"
STA. 596+08.47 TO STA. 596+48.47 - 6'-3"
STA. 596+48.47 TO STA. 596+65.79 - TRANSITIONS FROM 6'-3" TO 11'-9"
STA. 596+65.79 TO STA. 596+88.71 - 11'-9"
STA. 596+88.71 TO STA. 597+04.49 - TRANSITIONS FROM 11'-9" TO 8'-4"
- 5 PARKING LANE WIDTH - LEFT
STA. 595+20.61 TO STA. 595+87.55 - 0'-0"
STA. 595+87.55 TO STA. 596+08.47 - TRANSITIONS FROM 0'-0" TO 8'-6"
STA. 596+08.47 TO STA. 596+48.47 - 6'-6"
STA. 596+48.47 TO STA. 596+65.79 - TRANSITIONS FROM 8'-6" TO 0'-0"
STA. 596+65.79 TO STA. 597+04.49 - 0'-0"
- 6 FURNISHING ZONE WIDTH - RIGHT
STA. 595+23.95 TO STA. 595+37.31 - TRANSITIONS FROM 0'-0" TO 14'-9"
STA. 595+37.31 TO STA. 596+98.48 - 14'-9"
STA. 596+98.48 TO STA. 597+04.49 - TRANSITIONS FROM 14'-9" TO 14'-1"
- 7 CONCRETE CURB LOCATION
STA. 595+22.42 TO STA. 595+44.54, LT



FILE NAME *	USER NAME = mansk81390	DESIGNED - RMM/EMM	REVISED -	STATE OF ILLINOIS DEPARTMENT OF TRANSPORTATION	PERSIMMON STREET PROPOSED TYPICAL SECTIONS			F.A.U. R.T.E.	SECTION	COUNTY	TOTAL SHEETS	SHEET NO.
or\pwise-work\do_not_delete\dms73328\04	04.0155-eh-typicals-201.dgn	DRAWN - RJE	REVISED -		SCALE: N/A	SHEET NO. OF SHEETS	STA. TO STA.	12-00356-01-PV	PEORIA	519	14	
	PLOT SCALE = 1/8"=1'-0"	CHECKED - EJM	REVISED -									
	PLOT DATE = 07/23/2012	DATE - 7/18/12	REVISED -									