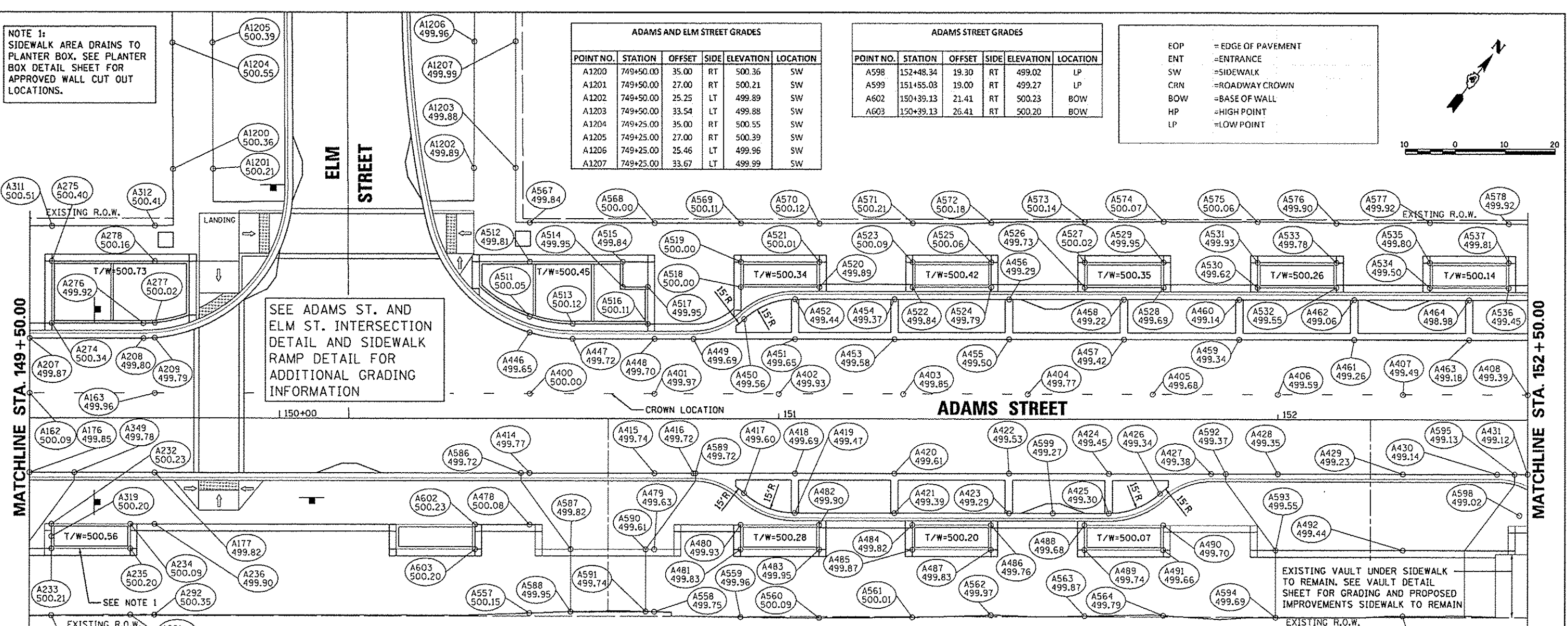
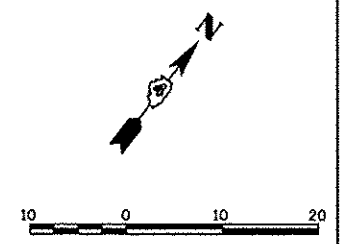


NOTE 1:
SIDEWALK AREA DRAINS TO
PLANTER BOX. SEE PLANTER
BOX DETAIL SHEET FOR
APPROVED WALL CUT OUT
LOCATIONS.

ADAMS AND ELM STREET GRADES					
POINT NO.	STATION	OFFSET	SIDE	ELEVATION	LOCATION
A1200	749+50.00	35.00	RT	500.36	SW
A1201	749+50.00	27.00	RT	500.21	SW
A1202	749+50.00	25.25	LT	499.89	SW
A1203	749+50.00	33.54	LT	499.88	SW
A1204	749+25.00	35.00	RT	500.55	SW
A1205	749+25.00	27.00	RT	500.39	SW
A1206	749+25.00	25.46	LT	499.96	SW
A1207	749+25.00	33.67	LT	499.99	SW

ADAMS STREET GRADES					
POINT NO.	STATION	OFFSET	SIDE	ELEVATION	LOCATION
A598	152+48.34	19.30	RT	499.02	LP
A599	151+55.03	19.00	RT	499.27	LP
A602	150+39.13	21.41	RT	500.23	BOW
A603	150+39.13	26.41	RT	500.20	BOW

EOP = EDGE OF PAVEMENT
ENT = ENTRANCE
SW = SIDEWALK
CRN = ROADWAY CROWN
BOW = BASE OF WALL
HP = HIGH POINT
LP = LOW POINT



ADAMS STREET GRADES					
POINT NO.	STATION	OFFSET	SIDE	ELEVATION	LOCATION
A162	149+50.00	5.00	LT	500.09	CRN
A163	149+75.00	5.00	RT	499.96	CRN
A176	149+50.00	11.00	RT	499.85	EOP
A177	149+75.00	11.00	RT	499.82	EOP
A207	149+50.00	16.00	LT	499.87	EOP
A208	149+72.73	16.00	LT	499.80	EOP
A209	149+75.00	16.09	LT	499.79	EOP
A232	149+54.38	21.41	RT	500.23	BOW
A233	149+54.38	26.41	RT	500.21	BOW
A234	149+70.13	21.41	RT	500.09	BOW
A235	149+70.13	26.41	RT	500.20	BOW
A236	149+75.00	21.41	RT	499.90	SW
A274	149+54.38	19.02	LT	500.34	BOW
A275	149+54.38	31.41	LT	500.40	BOW
A276	149+72.73	19.02	LT	499.92	BOW
A277	149+75.00	19.13	LT	500.02	BOW
A278	149+75.00	31.41	LT	500.16	BOW
A290	149+54.38	39.93	RT	500.35	SW
A291	149+70.13	39.80	RT	500.33	SW
A311	149+54.38	38.44	LT	500.51	SW
A312	149+75.00	38.54	LT	500.41	SW
A319	149+54.38	23.91	RT	500.20	LP

ADAMS STREET GRADES					
POINT NO.	STATION	OFFSET	SIDE	ELEVATION	LOCATION
A400	150+50.00	5.00	LT	500.00	CRN
A401	150+75.00	5.00	LT	499.97	CRN
A402	151+00.00	5.00	LT	499.93	CRN
A403	151+25.00	5.00	LT	499.85	CRN
A404	151+50.00	5.00	LT	499.77	CRN
A405	151+75.00	5.00	LT	499.68	CRN
A406	152+00.00	5.00	LT	499.59	CRN
A407	152+25.00	5.00	LT	499.49	CRN
A408	152+50.00	5.00	LT	499.39	CRN
A414	150+50.00	11.00	RT	499.77	EOP
A415	150+75.00	11.00	RT	499.74	EOP
A416	150+82.86	11.00	RT	499.72	EOP
A417	150+93.06	15.00	RT	499.60	EOP
A418	151+03.25	11.00	RT	499.69	EOP
A419	151+03.25	19.00	RT	499.47	EOP
A420	151+23.25	11.00	RT	499.61	EOP
A421	151+23.25	19.00	RT	499.39	EOP
A422	151+46.25	11.00	RT	499.53	EOP
A423	151+46.25	19.00	RT	499.29	EOP
A424	151+66.25	11.00	RT	499.45	EOP
A425	151+66.25	19.00	RT	499.30	EOP
A426	151+76.45	15.00	RT	499.34	EOP
A427	151+86.65	11.00	RT	499.38	EOP
A428	152+00.00	11.00	RT	499.35	EOP
A429	152+25.00	11.00	RT	499.23	EOP

ADAMS STREET GRADES					
POINT NO.	STATION	OFFSET	SIDE	ELEVATION	LOCATION
A430	152+43.86	11.00	RT	499.14	EOP
A431	152+50.00	11.00	RT	499.12	EOP
A446	150+50.00	17.27	LT	499.65	EOP
A447	150+58.63	16.00	LT	499.72	EOP
A448	150+75.00	16.00	LT	499.70	EOP
A449	150+82.86	16.00	LT	499.69	EOP
A450	150+93.06	20.00	LT	499.57	EOP
A451	151+03.25	16.00	LT	499.65	EOP
A452	151+03.25	24.00	LT	499.44	EOP
A453	151+23.25	16.00	LT	499.58	EOP
A454	151+23.25	24.00	LT	499.37	EOP
A455	151+46.25	16.00	LT	499.50	EOP
A456	151+46.25	24.00	LT	499.29	EOP
A457	151+69.25	16.00	LT	499.42	EOP
A458	151+69.25	24.00	LT	499.22	EOP
A459	151+92.25	16.00	LT	499.34	EOP
A460	151+92.25	24.00	LT	499.14	EOP
A461	152+15.25	16.00	LT	499.26	EOP
A462	152+15.25	24.00	LT	499.06	EOP
A463	152+38.25	16.00	LT	499.18	EOP
A464	152+38.25	24.00	LT	498.98	EOP
A478	150+50.00	21.41	RT	500.08	SW
A479	150+75.00	26.41	RT	499.63	SW
A480	150+92.38	21.41	RT	499.93	BOW
A481	150+92.38	26.41	RT	499.83	BOW

ADAMS STREET GRADES					
POINT NO.	STATION	OFFSET	SIDE	ELEVATION	LOCATION
A482	151+08.13	21.41	RT	499.90	BOW
A483	151+08.13	26.41	RT	499.95	BOW
A484	151+26.88	21.41	RT	499.82	BOW
A485	151+26.88	26.41	RT	499.87	BOW
A486	151+42.63	21.41	RT	499.76	BOW
A487	151+42.63	26.41	RT	499.83	BOW
A488	151+61.38	21.41	RT	499.68	BOW
A489	151+61.38	26.41	RT	499.74	BOW
A490	151+77.13	21.41	RT	499.70	BOW
A491	151+77.13	26.41	RT	499.66	BOW
A492	152+25.00	26.41	RT	499.44	SW
A493	152+25.00	39.75	RT	499.70	SW
A511	150+50.00	20.44	LT	500.05	BOW
A512	150+50.00	31.41	LT	499.81	BOW
A513	150+58.65	19.02	LT	500.12	BOW
A514	150+68.64	26.41	LT	499.95	BOW
A515	150+68.64	31.41	LT	499.84	BOW
A516	150+73.64	19.02	LT	500.11	BOW
A517	150+73.64	26.41	LT	499.95	BOW
A518	150+92.39	26.41	LT	500.00	BOW
A519	150+92.39	31.41	LT	500.00	BOW
A520	151+08.14	26.41	LT	499.89	BOW
A521	151+08.14	31.41	LT	500.01	BOW
A522	151+26.89	26.41	LT	499.84	BOW
A523	151+26.89	31.41	LT	500.09	BOW

ADAMS STREET GRADES					
POINT NO.	STATION	OFFSET	SIDE	ELEVATION	LOCATION
A524	151+42.64	26.41	LT	499.79	BOW
A525	151+42.64	31.41	LT	500.06	BOW
A526	151+61.39	26.41	LT	499.73	BOW
A527	151+61.39	31.41	LT	500.02	BOW
A528	151+77.14	26.41	LT	499.69	BOW
A529	151+77.14	31.41	LT	499.95	BOW
A530	151+95.92	26.41	LT	499.62	BOW
A531	151+95.92	31.41	LT	499.93	BOW
A532	152+11.67	26.41	LT	499.55	BOW
A533	152+11.67	31.41	LT	499.78	BOW
A534	152+30.41	26.41	LT	499.50	BOW
A535	152+30.41	31.41	LT	499.80	BOW
A536	152+46.16	26.41	LT	499.45	BOW
A537	152+46.16	31.41	LT	499.81	BOW
A557	150+50.00	39.35	RT	500.15	SW
A558	150+75.00	39.04	RT	499.75	SW
A559	150+92.38	40.12	RT	499.96	SW
A560	151+08.13	40.24	RT	500.09	SW
A561	151+26.88	40.12	RT	500.01	SW
A562	151+42.63	39.67	RT	499.97	SW
A563	151+61.38	39.83	RT	499.87	SW
A564	151+77.13	39.70	RT	499.79	SW
A565	152+43.54	39.85	RT	499.72	SW
A568	150+75.00	39.19	LT	500.00	SW
A569	150+92.39	39.16	LT	500.11	SW

ADAMS STREET GRADES					
POINT NO.	STATION	OFFSET	SIDE	ELEVATION	LOCATION
A570	151+08.14	39.10	LT	500.12	SW
A571	151+26.89	39.21	LT	500.21	SW
A572	151+42.64	39.30	LT	500.18	SW
A573	151+61.39	39.52	LT	500.14	SW
A574	151+77.14	39.57	LT	500.07	SW
A575	151+95.92	39.58	LT	500.06	SW
A576	152+11.67	39.27	LT	499.90	SW
A577	152+30.41	39.44	LT	499.92	SW
A578	152+46.16	39.23	LT	499.92	SW
A586	150+48.27	11.00	RT	499.72	ENT
A587	150+58.27	26.41	RT	499.82	ENT
A588	150+58.27	39.06	RT	499.95	ENT
A589	150+83.27	11.00	RT	499.72	ENT
A590	150+73.27	26.41	RT	499.63	ENT
A591	150+73.27	38.99	RT	499.04	ENT
A592	151+89.57	11.00	RT	499.37	ENT
A593	151+99.57	26.41	RT	499.55	ENT
A594	151+99.57	40.04	RT	499.69	ENT
A595	152+47.36	11.00	RT	499.13	ENT