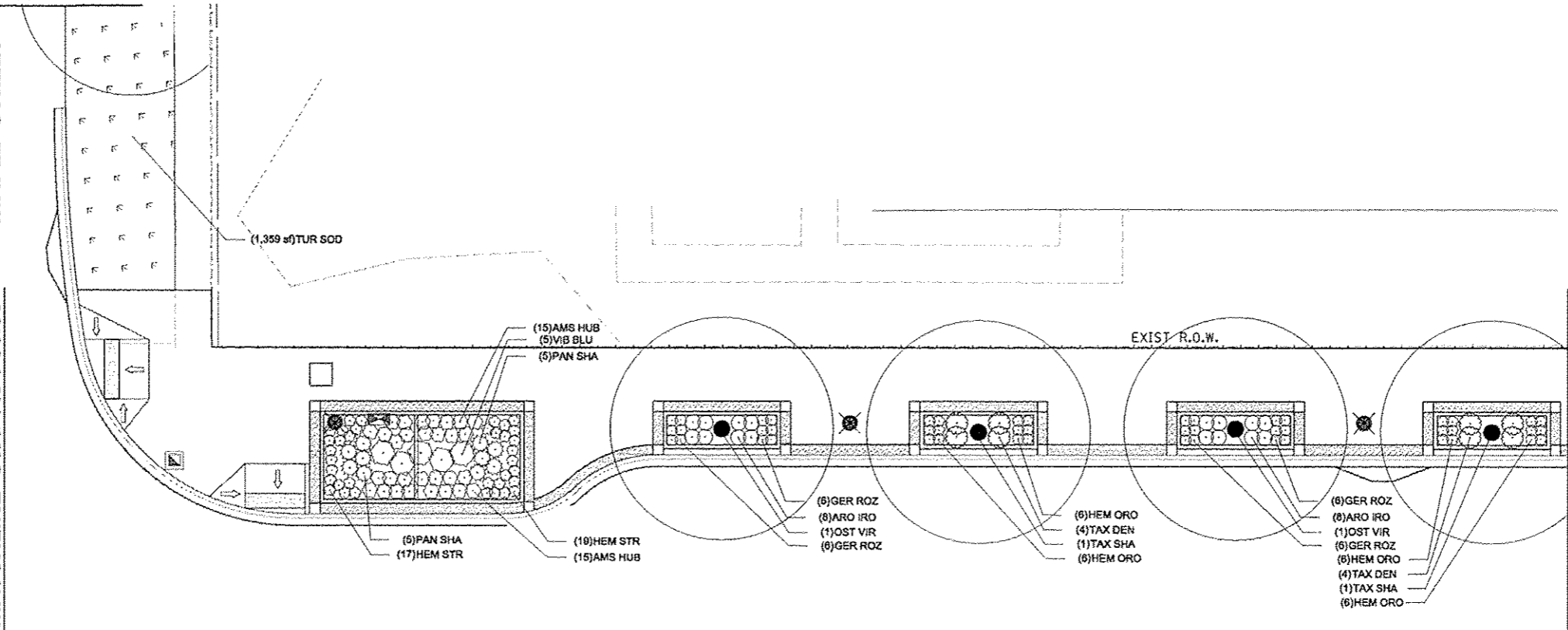


MATCHLINE STA. 249 + 55.00

MAPLE STREET

MATCHLINE STA. 145 + 90.00

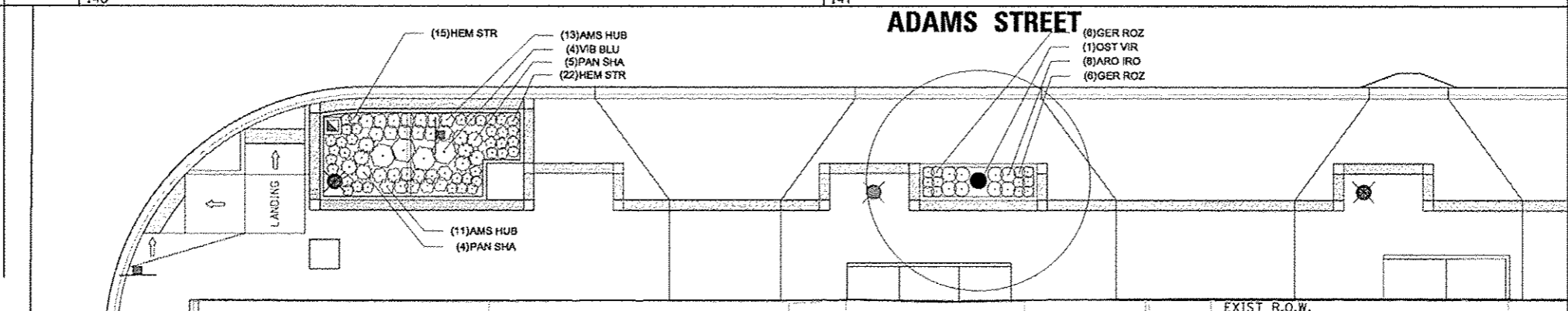


MATCHLINE STA. 148 + 00.00

146

147

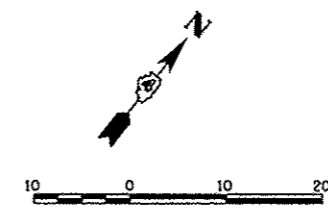
ADAMS STREET



PLANT SCHEDULE ADAMS - MAPLE TO ELM

TREES	QTY	BOTANICAL NAME	COMMON NAME	SIZE	REMARKS
OST VIR	6	Ostrya virginiana	American Hophornbeam	2" Cal	PAY ITEM # A2005818
TAX SHA	6	Taxodium distichum 'Shawnee Brave' TM	Shawnee Brave Bald Cypress	2" Cal	PAY ITEM # A2007710
SHRUBS	QTY	BOTANICAL NAME	COMMON NAME	SIZE	REMARKS
ARO IRO	48	Aronia melanocarpa 'Iroquois Beauty' TM	Iroquois Beauty Black Chokeberry	24" Tall	PAY ITEM # C2C00324
EVO ALA	6	Euonymus alata 'Compacta'	Dwarf Winged Euonymus	3' Tall	PAY ITEM # C2002838
TAX DEN	24	Taxus x media 'Deniformis'	Dense Yew	2" Wide	PAY ITEM # D2003524
VIB BLU	9	Viburnum dentatum 'Christora' TM	Blue Muffin Viburnum	24" Tall	PAY ITEM # C2C11752
ANNUALS/PERENNIALS	QTY	BOTANICAL NAME	COMMON NAME	SIZE	REMARKS
AMS HUB	54	Amsoria hybridisi	Arkansas Blue-star	1 gal	PAY ITEM # K0012890
GER ROZ	72	Geranium x 'Rozanne' TM	Rozanne Cranebill	1 gal	PAY ITEM # K0012890
HEM ORO	72	Heemerocallis x 'Stella de Oro'	Stella de Oro Daylily	1 gal	PAY ITEM # K0012890
HEM STR	73	Heemerocallis x 'Strawberry Candy' TM	Strawberry Candy Daylily	1 gal	PAY ITEM # K0012890
NEP WAL	27	Nepeta x faasanii 'Walkers Low'	Walkers Low Catmint	1 gal	PAY ITEM # K0012890
GRASSES	QTY	BOTANICAL NAME	COMMON NAME	SIZE	REMARKS
PAN SHA	19	Panicum virgatum 'Shenandoah'	Burgundy Switch Grass	3 gal	PAY ITEM # K0012893
SPO HET	30	Sporobolus heterolepis	Prairie Dropseed	1 gal	PAY ITEM # K0012890

MATCHLINE STA. 698 + 10.00



FILE NAME =	USER NAME = monah.01390	DESIGNED = JLH	REVISED =
C:\p\user\work\do_not_delete\dms73427\04	01.0159-shv-plant084.dgn	DRAWN = JLH	REVISED =
	PLOT SCALE = 20.0000' / 1"	CHECKED = BAB	REVISED =
	PLOT DATE = 07/23/2012	DATE = 7/18/12	REVISED =

DESIGNED = JLH	REVISED =
DRAWN = JLH	REVISED =
CHECKED = BAB	REVISED =
DATE = 7/18/12	REVISED =

STATE OF ILLINOIS
DEPARTMENT OF TRANSPORTATION

ADAMS STREET
PLANTING PLAN

SCALE: 1"=10'

SHEET NO. OF SHEETS STA. 145+90 TO STA. 148+00

F.A.U. RTE.	SECTION	COUNTY	TOTAL SHEETS	SHEET NO.
6618	12-00356-01-PV	PEORIA	519	328
		CONTRACT NO. 89626		
ILLINOIS FED. AID PROJECT FIG-50930150				

Farnsworth GROUP
7707 N. KNOXVILLE AVE, SUITE 100
PEORIA, ILLINOIS 61614
(309) 699-9500 / (309) 699-9520 Fax
www.fw.com