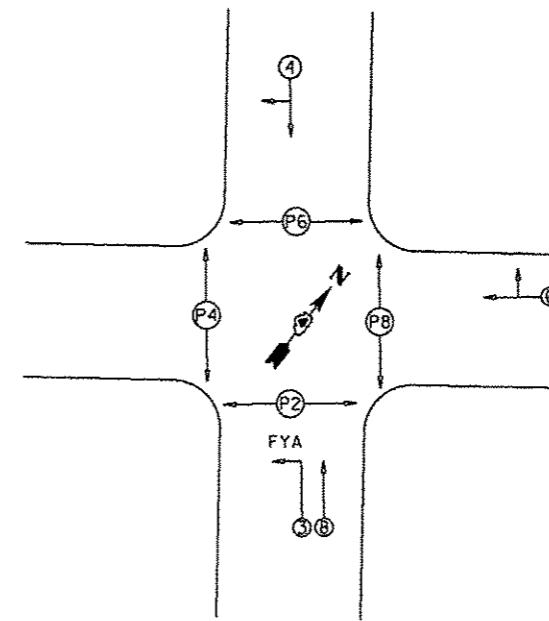


NOTES:  
 1. CABINET TO BE SET-UP PER MANUFACTURER SPECIFICATIONS FOR FLASHING YELLOW ARROW OPERATIONS.



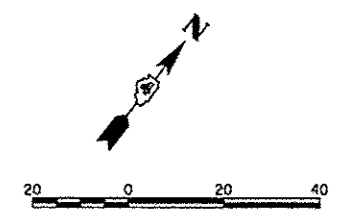
PHASE DESIGNATION DIAGRAM

TRAFFIC SIGNAL WIRING DIAGRAM LEGEND

PROPOSED	DESCRIPTION
⑤	ELECTRIC CABLE DENOTING NUMBER OF CONDUCTORS
☐	SIGNAL FACE WITH BACKPLATE
☐	DIRECTIONAL SIGNAL SECTION
Ⓜ	12" SIGNAL SECTION
☑	WALK/DON'T WALK SECTION + COUNT DOWN
⚡	GROUND WIRE (POLE)
⚡	GROUND WIRE (MAST ARM)
⊙	PEDESTRIAN PUSHBUTTON
---	CONDUIT
FYA	FLASHING YELLOW ARROW
☉	LUMINAIRE
UPS	UNINTERRUPTABLE POWER SUPPLY

TRAFFIC SIGNAL GENERAL NOTES

- ALL TRAFFIC SIGNAL SECTIONS SHALL HAVE 12" SINGLE LED LENSES.
- ALL PEDESTRIAN SECTIONS SHALL HAVE 16" LENSES WITH A MAN/HAND OVERLAY AND COUNTDOWN TIMER.
- THE RED SECTIONS OF THE SIGNAL HEADS SHARING THE SAME MAST ARM SHALL BE LEVEL WITH ONE ANOTHER AND MAINTAIN A 16' MINIMUM CLEARANCE FROM THE HIGHEST POINT OF THE ROADWAY.
- THE PROPOSED MAST ARM MOUNTED TRAFFIC SIGNAL HEADS SHALL BE MOUNTED DIRECTLY OVER THE CENTER OF THEIR RESPECTIVE LANES.
- ALL TRAFFIC SIGNAL HEAD BRACKETS ARE TO BE ALUMINUM WITH A BLACK FINISH.
- ALL TRAFFIC SIGNAL POSTS ARE TO BE GALVANIZED STEEL.
- EXISTING CONDUIT, IF USED, SHALL BE COUPLED TO THE PROPOSED CONDUIT. THIS WORK SHALL BE INCLUDED IN THE PRICE FOR THE CONDUIT OF THE TYPE SPECIFIED.
- PROPOSED HANDHOLES SHALL BE CAST IN PLACE CONCRETE HANDHOLES.
- THE HANDHOLE SHALL BE CONSTRUCTED SO THAT THE TOP OF THE FRAME WILL BE FLUSH WITH THE SURFACE OF THE MEDIAN, SIDEWALK, OR GROUND LINE.
- THE LOCATION OF ALL UTILITIES SHALL BE FIELD VERIFIED BY THE CONTRACTOR BEFORE THE INSTALLATION OF ANY TRAFFIC SIGNAL COMPONENTS.
- COILABLE POLYETHYLENE DUCT MAY BE SUBSTITUTED FOR PVC CONDUIT PUSHED.
- THE LOCATIONS FOR HANDHOLES, TRAFFIC SIGNAL POST FOUNDATIONS, AND MAST ARM FOUNDATIONS ARE PROVIDED FOR REFERENCE ONLY. THE ENGINEER OF TRAFFIC SHALL BE NOTIFIED FOR LOCATION VERIFICATION BEFORE INSTALLATION.
- ALL SURPLUS MATERIALS SHALL BE DISPOSED OF IN ACCORDANCE WITH ARTICLE 202.03 OF THE STANDARD SPECIFICATIONS.
- NO ADDITIONAL COMPENSATION SHALL BE ALLOWED FOR PLACING CONDUIT AT GREATER THAN 2 FT. MINIMUM DEPTH TO AVOID OBSTACLES SUCH AS UNDERGROUND UTILITIES.
- THE CONTRACTOR IS RESPONSIBLE FOR THE COST OF UNCOVERING, HAND DIGGING, OR ANY SPECIAL EXCAVATION AROUND UTILITIES AS NECESSARY. THIS COST OF THIS WORK SHALL BE INCLUDED IN THE UNIT PRICES FOR THE CONDUITS AND FOUNDATIONS.
- ALL TRAFFIC SIGNAL MAST ARMS, POSTS, HANDHOLE LIDS AND RINGS, HANDHOLE FRAMES, CONTROLLER CABINETS, SERVICE RISERS, EXPOSED METALLIC CONDUITS, AND PHOTOCCELL RELAYS SHALL BE GROUNDED IN ACCORDANCE WITH NEC REQUIREMENTS.
- DRILLING HOLES THROUGH CURB AND GUTTER WILL NOT BE ALLOWED.
- THE LENGTH OF DETECTOR LOOP CABLE FROM CURB TO THE HANDHOLE SHALL BE INCLUDED IN THE DETECTOR LOOP QUANTITY.
- LOOPS IN THE SAME LANE SHALL BE WOUND ALTERNATELY CLOCKWISE AND COUNTER CLOCKWISE.
- THE CONDUITS SHOWN CONNECTING THE BACK OF CURB TO THE ROADSIDE HANDHOLE SHALL CONTAIN ONLY DETECTOR LOOP CABLE.
- A 1/4" DIAMETER CONTINUOUS NYLON ROPE SHALL BE FURNISHED AND LEFT IN PLACE IN ALL CONDUITS BETWEEN HANDHOLES AND FOUNDATIONS OR CONTROLLER.



FILE NAME *	USER NAME = manak01390	DESIGNED - KNB	REVISED -
or\pwise_work\do_not_delete\dms73308\04	RL0150-shr+sa000.dgn	DRAWN - RLA	REVISED -
	PLOT SCALE = 3/4"=1' / in.	CHECKED - TMA	REVISED -
	PLOT DATE = 07/23/2012	DATE = 7/18/12	REVISED -

**STATE OF ILLINOIS  
 DEPARTMENT OF TRANSPORTATION**

**JEFFERSON AVENUE AND OAK STREET  
 CABLE PLAN**

SCALE: 1"=20'    SHEET NO.    OF    SHEETS    STA.    TO STA.

F.A.U. RTE.	SECTION	COUNTY	TOTAL SHEETS	SHEET NO.
12	12-00356-01-PV	PEORIA	519	383
ILLINOIS FED. AID PROJECT			CONTRACT NO. 89626	
TIG-5093058				

