

SUMMARY OF QUANTITIES

SPECIAL PROVISION	SPECIALTY ITEM	CODE NO.	ITEM	UNIT	PROJECT TOTAL TOTAL QUANTITY	CONST. CODE 0004	CONST. CODES 0021/0043
						STU (70/30) (ROADWAY RECONSTRUCTION)	100% LOCAL (LIGHTING AND WATER MAIN)
					TOTAL QUANTITY	TOTAL QUANTITY	TOTAL QUANTITY
	*	20100110	TREE REMOVAL (6 TO 15 UNITS DIAMETER)	UNIT	50	50	
	*	20100210	TREE REMOVAL (OVER 15 UNITS DIAMETER)	UNIT	75	75	
	*	20101100	TREE TRUNK PROTECTION	EACH	81	81	
	*	20101200	TREE ROOT PRUNING	EACH	20	20	
	*	20101300	TREE PRUNING (1 TO 10 INCH DIAMETER)	EACH	20	20	
	*	20101350	TREE PRUNING (OVER 10 INCH DIAMETER)	EACH	20	20	
	*	20101700	SUPPLEMENTAL WATERING	UNIT	100	100	
		20200100	EARTH EXCAVATION	CU YD	4,000	4,000	
		20201200	REMOVAL AND DISPOSAL OF UNSUITABLE MATERIAL	CU YD	2,000	2,000	
		21001000	GEOTECHNICAL FABRIC FOR GROUND STABILIZATION	SQ YD	6,000	6,000	
		21101505	TOPSOIL EXCAVATION AND PLACEMENT	CU YD	500	500	
		21301072	EXPLORATION TRENCH 72" DEPTH	FOOT	150	150	
	*	25200110	SODDING, SALT TOLERANT	SQ YD	8,000	7,500	500
		28000510	INLET FILTERS	EACH	45	45	
		30300001	AGGREGATE SUBGRADE IMPROVEMENT	CU YD	2,000	2,000	
		30300112	AGGREGATE SUBGRADE IMPROVEMENT 12"	SQ YD	11,000	11,000	
		40600290	BITUMINOUS MATERIALS (TACK COAT)	POUND	6,000	6,000	
		40600625	LEVELING BINDER (MACHINE METHOD), N50	TON	30	30	
		40600635	LEVELING BINDER (MACHINE METHOD), N70	TON	30	30	
		40600982	HOT-MIX ASPHALT SURFACE REMOVAL - BUTT JOINT	SQ YD	900	900	
		40603080	HOT-MIX ASPHALT BINDER COURSE, IL-19.0, N50	TON	4,500	4,500	
		40603335	HOT-MIX ASPHALT SURFACE COURSE, MIX "D", N50	TON	1,350	1,350	
		40603340	HOT-MIX ASPHALT SURFACE COURSE, MIX "D", N70	TON	60	60	
		42300200	PORTLAND CEMENT CONCRETE DRIVEWAY PAVEMENT, 6 INCH	SQ YD	600	600	
		42400200	PORTLAND CEMENT CONCRETE SIDEWALK 5 INCH	SQ FT	35,000	35,000	
		42400300	PORTLAND CEMENT CONCRETE SIDEWALK 6 INCH	SQ FT	3,000	3,000	
		42400800	DETECTABLE WARNINGS	SQ FT	450	450	
		44000100	PAVEMENT REMOVAL	SQ YD	11,300	11,300	
		44000157	HOT-MIX ASPHALT SURFACE REMOVAL, 2"	SQ YD	1,325	1,325	
		44000200	DRIVEWAY PAVEMENT REMOVAL	SQ YD	1,250	1,250	
		44000500	COMBINATION CONCRETE CURB AND GUTTER REMOVAL	FOOT	6,250	6,250	
		44000600	SIDEWALK REMOVAL	SQ FT	25,000	25,000	
		44200926	CLASS B PATCHES, TYPE IV, 7 INCH	SQ YD	250	250	△
		44201725	CLASS D PATCHES, TYPE I, 7 INCH	SQ YD	50	50	
		44201729	CLASS D PATCHES, TYPE II, 7 INCH	SQ YD	50	50	
		44201733	CLASS D PATCHES, TYPE III, 7 INCH	SQ YD	75	75	△
		44201735	CLASS D PATCHES, TYPE IV, 7 INCH	SQ YD	275	275	△
		550A0050	STORM SEWERS, CLASS A, TYPE 1 12"	FOOT	375	375	
		550A0410	STORM SEWERS, CLASS A, TYPE 2 24"	FOOT	60	60	
		550A0430	STORM SEWERS, CLASS A, TYPE 2 30"	FOOT	110	110	
		550A0470	STORM SEWERS, CLASS A, TYPE 2 42"	FOOT	700	700	△
		550A0210	STORM SEWERS, CLASS A, TYPE 1 60"	FOOT	4,200	4,200	△
		550A0500	STORM SEWERS, CLASS A, TYPE 2 60"	FOOT	160	160	
		550A0510	STORM SEWERS, CLASS A, TYPE 2 66"	FOOT	10	10	
		550A0520	STORM SEWERS, CLASS A, TYPE 2 72"	FOOT	10	10	
		55100300	STORM SEWER REMOVAL 8"	FOOT	175	175	
		55100400	STORM SEWER REMOVAL 10"	FOOT	60	60	△
		55100500	STORM SEWER REMOVAL 12"	FOOT	100	100	
		55100700	STORM SEWER REMOVAL 15"	FOOT	50	50	△
		55101200	STORM SEWER REMOVAL 24"	FOOT	50	50	△
		55101400	STORM SEWER REMOVAL 30"	FOOT	715	715	△

SUMMARY OF QUANTITIES

SPECIAL PROVISION	SPECIALTY ITEM	CODE NO.	ITEM	UNIT	PROJECT TOTAL TOTAL QUANTITY	CONST. CODE 0004	CONST. CODES 0021/0043
						STU (70/30) (ROADWAY RECONSTRUCTION) TOTAL QUANTITY	100% LOCAL (LIGHTING AND WATER MAIN) TOTAL QUANTITY
-	*	56102900	DUCTILE IRON WATER MAIN, 4"	FOOT	35		35
-	*	56103000	DUCTILE IRON WATER MAIN, 6"	FOOT	160		160
-	*	56103100	DUCTILE IRON WATER MAIN, 8"	FOOT	3,195		3,195
-	*	56103300	DUCTILE IRON WATER MAIN, 12"	FOOT	20		20
-	*	56104800	WATER VALVES, 4"	EACH	2		2
-	*	56104900	WATER VALVES, 6"	EACH	4		4
-	*	56105000	WATER VALVES, 8"	EACH	13		13
-	*	56400500	FIRE HYDRANTS TO BE REMOVED	EACH	6		6
-	*	56400820	FIRE HYDRANT WITH AUXILIARY VALVE AND VALVE BOX	EACH	7		7
		60108204	PIPE UNDERDRAINS, TYPE 2, 4"	FOOT	800	800	
-	*	60221100	MANHOLES, TYPE A, 5'-DIAMETER, TYPE 1 FRAME, CLOSED LID	EACH	4	4	△
-	*	60224446	MANHOLES, TYPE A, 7'-DIAMETER, TYPE 1 FRAME, CLOSED LID	EACH	5	5	
-	*	60224459	MANHOLES, TYPE A, 8'-DIAMETER, TYPE 1 FRAME, CLOSED LID	EACH	1	1	△
-	*	60224469	MANHOLES, TYPE A, 9'-DIAMETER, TYPE 1 FRAME, CLOSED LID	EACH	2	2	
-	*	60200105	CATCH BASINS, TYPE A, 4'-DIAMETER, TYPE 1 FRAME, OPEN LID	EACH	27	27	
-	*	60234200	INLETS, TYPE A, TYPE 1 FRAME, OPEN LID	EACH	16	16	
-	*	60249000	VALVE VAULTS, TYPE A, 5'-DIAMETER, TYPE 1 FRAME, CLOSED LID	EACH	20		20
*	*	66400305	CHAIN LINK FENCE, 6'	FOOT	1,000	1,000	
		67100100	MOBILIZATION	L SUM	1	0.5	0.5
		70300150	SHORT TERM PAVEMENT MARKING REMOVAL	SQ FT	3,775	3,775	
		70300210	TEMPORARY PAVEMENT MARKING LETTERS AND SYMBOLS	SQ FT	200	200	
		70300220	TEMPORARY PAVEMENT MARKING - LINE 4"	FOOT	3,600	3,600	
		70300240	TEMPORARY PAVEMENT MARKING - LINE 6"	FOOT	1,650	1,650	
		70300260	TEMPORARY PAVEMENT MARKING - LINE 12"	FOOT	1,600	1,600	
	*	70300280	TEMPORARY PAVEMENT MARKING - LINE 24"	FOOT	300	300	
		70300510	PAVEMENT MARKING TAPE, TYPE III - LETTERS AND SYMBOLS	SQ FT	100	100	
		70300520	PAVEMENT MARKING TAPE, TYPE III 4"	FOOT	10,000	10,000	
		70300540	PAVEMENT MARKING TAPE, TYPE III 6"	FOOT	300	300	△
		70300560	PAVEMENT MARKING TAPE, TYPE III 12"	FOOT	1,600	1,600	
		70300570	PAVEMENT MARKING TAPE, TYPE III 24"	FOOT	300	300	
	*	72000100	SIGN PANEL - TYPE 1	SQ FT	100	100	
	*	72900100	METAL POST - TYPE A	FOOT	150	150	
	*	78000100	THERMOPLASTIC PAVEMENT MARKING - LETTERS AND SYMBOLS	SQ FT	100	100	
	*	78000200	THERMOPLASTIC PAVEMENT MARKING - LINE 4"	FOOT	2,000	2,000	
	*	78000400	THERMOPLASTIC PAVEMENT MARKING - LINE 6"	FOOT	1,600	1,600	
	*	78000600	THERMOPLASTIC PAVEMENT MARKING - LINE 12"	FOOT	1,600	1,600	
	*	78000650	THERMOPLASTIC PAVEMENT MARKING - LINE 24"	FOOT	300	300	
	*	78006100	PREFORMED THERMOPLASTIC PAVEMENT MARKING - LETTERS AND SYMBOLS	SQ FT	150	150	
	*	80400100	ELECTRIC SERVICE INSTALLATION	EACH	1		1
	*	81028200	UNDERGROUND CONDUIT, GALVANIZED STEEL, 2" DIA.	FOOT	50		50
	*	81028210	UNDERGROUND CONDUIT, GALVANIZED STEEL, 2 1/2" DIA.	FOOT	610		610
	*	81028730	UNDERGROUND COILABLE NONMETALLIC CONDUIT, 1 1/4" DIA.	FOOT	5,100		5,100
	*	81400730	HANDHOLE, COMPOSITE CONCRETE	EACH	2		2
	*	81702120	ELECTRIC CABLE IN CONDUIT, 600V (XLP-TYPE USE) 1/C NO. 8	FOOT	22,000		22,000
	*	81702150	ELECTRIC CABLE IN CONDUIT, 600V (XLP-TYPE USE) 1/C NO. 2	FOOT	250		250
	*	84500110	REMOVE EXISTING LIGHTING CONTROLLER	EACH	1		1
-	*	85000200	MAINTENANCE OF EXISTING TRAFFIC SIGNAL INSTALLATION	EACH	1	1	
-	*	87301305	ELECTRIC CABLE IN CONDUIT, LEAD-IN, NO. 14 1 PAIR	FOOT	125	125	
-	*	88600100	DETECTOR LOOP, TYPE I	FOOT	150	150	
	*	89500120	REMOVE EXISTING SERVICE INSTALLATION	EACH	1		1
-	*	89500400	RELOCATE EXISTING PEDESTRIAN PUSH-BUTTON	EACH	4	4	
	*	89502300	REMOVE EXISTING CABLE FROM CONDUIT	FOOT	500		500
	*	89502380	REMOVE EXISTING HANDHOLE	EACH	2		2

FILE NAME = N:\wimette\170224\Civil\003e_500.LOCUST
02.SHT
Default

USER NAME = jlapaglia
DESIGNED -
DRAWN -
CHECKED -
DATE -

REVISED - PER ADDENDUM #1 10/25/18
REVISED -
REVISED -
REVISED -

**STATE OF ILLINOIS
DEPARTMENT OF TRANSPORTATION**

**LOCUST ROAD
SUMMARY OF QUANTITIES**

SCALE: SHEET OF SHEETS STA. TO STA.

F.A.U. RTE. 1076	SECTION 12-00195-00-PV	COUNTY COOK	TOTAL SHEETS 109	SHEET NO. 5
CONTRACT NO. 61F16				
[ILLINOIS] FED. AID PROJECT				

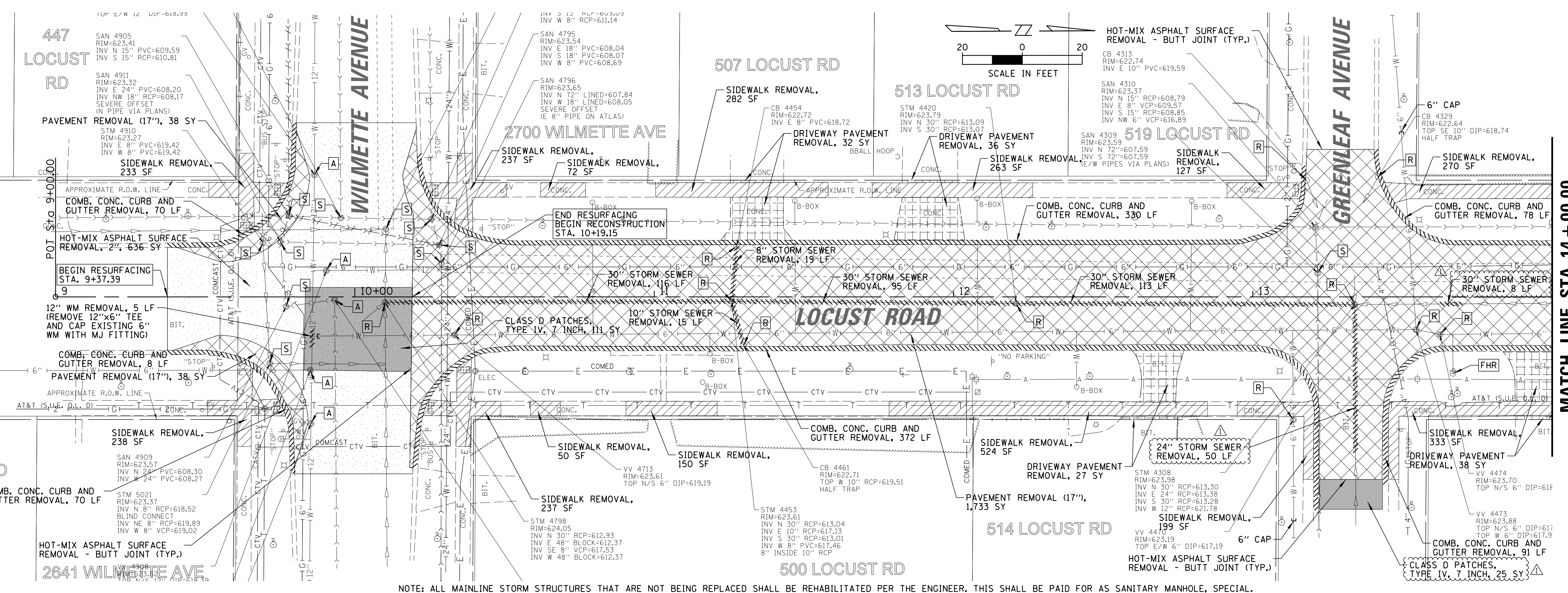
SUMMARY OF QUANTITIES

SPECIAL PROVISION	SPECIALTY ITEM	CODE NO.	ITEM	UNIT	PROJECT TOTAL TOTAL QUANTITY	CONST. CODE 0004	CONST. CODES 0021/0043
						STU (70/30) (ROADWAY RECONSTRUCTION)	100% LOCAL (LIGHTING AND WATER MAIN)
					TOTAL QUANTITY	TOTAL QUANTITY	TOTAL QUANTITY
-	*	X0325207	TELEVISION INSPECTION OF SEWER	FOOT	6,250		6,250
-	*	X0325714	FLASHING BEACON, POST MOUNTED, SOLAR POWERED INSTALLATION	EACH	2	2	
-	*	X0326862	STRUCTURES TO BE ADJUSTED	EACH	10	10	
-	*	X0327576	TEMPORARY PATCHING	SQ YD	750	250	500
-	*	X0327611	REMOVE AND REINSTALL BRICK PAVER	SQ FT	50	50	
-	*	X0327980	PAVEMENT MARKING REMOVAL - WATER BLASTING	SQ FT	2,500	2,500	
-	*	X1400202	LUMINAIRE (SPECIAL)	EACH	22		22
-	*	X1700021	BRICK PAVER REMOVAL AND REINSTALLATION, SPECIAL	SQ FT	500	500	
-	*	X2080250	TRENCH BACKFILL, SPECIAL	CU YD	6,250	2,250	4,000
-	*	X4021000	TEMPORARY ACCESS (PRIVATE ENTRANCE)	EACH	23	23	
-	*	X4022000	TEMPORARY ACCESS (COMMERCIAL ENTRANCE)	EACH	6	6	
-	*	X4023000	TEMPORARY ACCESS (ROAD)	EACH	7	7	
-	*	X5610004	DUCTILE IRON WATER MAIN FITTINGS	POUND	10,000		10,000
-	*	X5610700	WATER MAIN REMOVAL	FOOT	50		50
-	*	X5610704	WATER MAIN REMOVAL, 4"	FOOT	5		5
-	*	X5610706	WATER MAIN REMOVAL, 6"	FOOT	450		450
-	*	X5610712	WATER MAIN REMOVAL, 12"	FOOT	15		15
-	*	X5610744	WATER MAIN LINE STOP 4"	EACH	1		1
-	*	X5610746	WATER MAIN LINE STOP 6"	EACH	2		2
-	*	X5610748	WATER MAIN LINE STOP 8"	EACH	2		2
-	*	X5610752	WATER MAIN LINE STOP 12"	EACH	2		2
-	*	X5620102	WATER SERVICE REPLACEMENT, 1.5" - SHORT	EACH	15		15
-	*	X5620104	WATER SERVICE REPLACEMENT, 1.5" - LONG	EACH	19		19
-	*	X6026055	SANITARY MANHOLE, SPECIAL	EACH	14		14
-	*	X6061005	CONCRETE CURB, TYPE B (SPECIAL)	FOOT	6,500	6,500	
-	*	X7010216	TRAFFIC CONTROL AND PROTECTION, (SPECIAL)	L SUM	1	0.5	0.5
-	*	X7010238	CHANGEABLE MESSAGE SIGN, SPECIAL	CAL MO	19	19	
-	*	X7030005	TEMPORARY PAVEMENT MARKING REMOVAL	SQ FT	3,775	3,775	0
-	*	X7340102	CONCRETE FOUNDATION, STREET LIGHTING CONTROLLER	EACH	1		1
-	*	X8040300	ELECTRICAL SERVICE CONNECTION	EACH	22		22
-	*	X8440116	RELOCATE EXISTING LIGHTING UNIT, SPECIAL	EACH	22		22
-	*	X8570015	CONTROLLER (SPECIAL)	EACH	1		1
-	*	Z0004510	HOT-MIX ASPHALT DRIVEWAY PAVEMENT, 3"	SQ YD	750	750	
-	*	Z0007430	TEMPORARY SIDEWALK	SQ FT	1,000	1,000	
-	*	Z0013798	CONSTRUCTION LAYOUT	L SUM	1	0.5	0.5
-	*	Z0017400	DRAINAGE & UTILITY STRUCTURES TO BE ADJUSTED	EACH	39	39	
-	*	Z0017700	DRAINAGE & UTILITY STRUCTURES TO BE RECONSTRUCTED	EACH	10	10	
-	*	Z0018700	DRAINAGE STRUCTURE TO BE REMOVED	EACH	43	43	
-	*	Z0029602	TEMPORARY SIGNING	EACH	20	20	
-	*	Z0033026	MAINTENANCE OF EXISTING LIGHTING SYSTEM COMPLETE	L SUM	1		1
-	*	Z0055905	TEMPORARY CONSTRUCTION FENCE	FOOT	7,500	7,500	
-	*	Z0056648	STORM SEWERS, TYPE 1, WATER MAIN QUALITY PIPE, 12"	FOOT	300		300
-	*	Z0073510	TEMPORARY TRAFFIC SIGNAL TIMING	EACH	1	1	
-	*	Z0076600	TRAINEES	HOUR	1,000	1,000	
-	*	Z0076604	TRAINEES TRAINING PROGRAM GRADUATE	HOUR	1,000	1,000	
-	*	C2007824	SHRUB, ROSA MEINELBE (RED MEIDLAND ROSE) 24" HEIGHT, CONTAINER	EACH	8	8	
-	*	XX003668	PRECONSTRUCTION VIDEO TAPING	L SUM	1		1
-	*	XX004689	SANITARY SERVICE TO BE ADJUSTED	EACH	19		19
-	*	XX006624	TEMPORARY FIRE HYDRANT	EACH	11		11
-	*	XX007001	ROOT BARRIER	EACH	50	50	
-	*	XX007169	NON-PRESSURE CONNECTION	EACH	12		12
-	*	XX008839	WATER MAIN TO BE ABANDONED	L SUM	1		1
-	*	XX008070	MAST ARM INSTALLATION TYPE 1	EACH	22		22
-	*	XX009274	SPRINKLER SYSTEM HEAD	EACH	35	35	
-	*	XX009275	SPRINKLER SYSTEM LINE	FOOT	1,750	1,750	

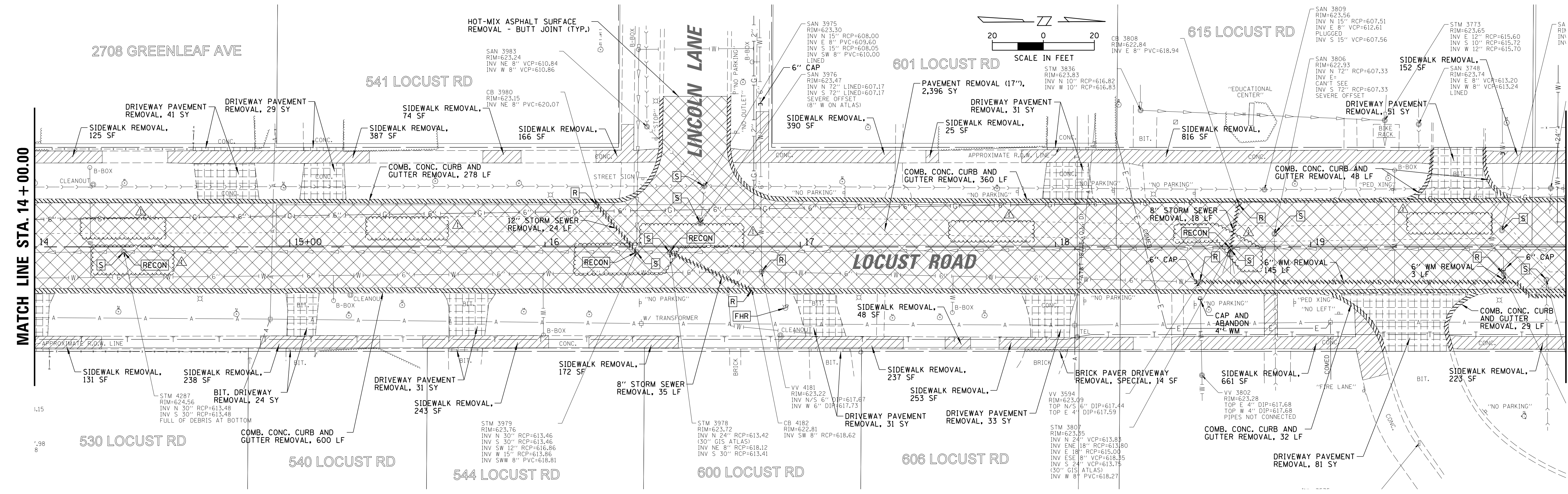
*INDICATES SPECIALTY ITEM
-INDICATES SPECIAL PROVISION

FILE NAME = N:\wilmette\170224\Civil\003b.S00.LOCUST	USER NAME = jlapaglia	DESIGNED - DRAWN -	REVISED - REVISED -	PER ADDENDUM #1 10/25/18	STATE OF ILLINOIS DEPARTMENT OF TRANSPORTATION	LOCUST ROAD SUMMARY OF QUANTITIES	F.A.U. RTE. 1076	SECTION 12-00195-00-PV	COUNTY COOK	TOTAL SHEETS 109	SHEET NO. 6
Default	PLOT SCALE = 20'	CHECKED -	REVISED -				SCALE:	SHEET	OF	SHEETS	STA.

LEGEND	
	PAVEMENT REMOVAL (17")
	HOT-MIX ASPHALT SURFACE REMOVAL, 2"
	DRIVEWAY PAVEMENT REMOVAL
	BRICK PAVER REMOVAL, SPECIAL
	SIDEWALK REMOVAL
	PATCHES (OF THE TYPE SPECIFIED)
	COMBINATION CONCRETE CURB AND GUTTER REMOVAL
	WATER MAIN REMOVAL
	STORM SEWER REMOVAL
	FIRE HYDRANTS TO BE REMOVED
	STRUCTURES TO BE ADJUSTED
	STRUCTURES TO BE ADJUSTED, SPECIAL
	DRAINAGE STRUCTURE TO BE REMOVED
	DRAINAGE & UTILITY STRUCTURES TO BE RECONSTRUCTED
	CAP EXISTING WATER MAIN



NOTE: ALL MAINLINE STORM STRUCTURES THAT ARE NOT BEING REPLACED SHALL BE REHABILITATED PER THE ENGINEER. THIS SHALL BE PAID FOR AS SANITARY MANHOLE, SPECIAL.



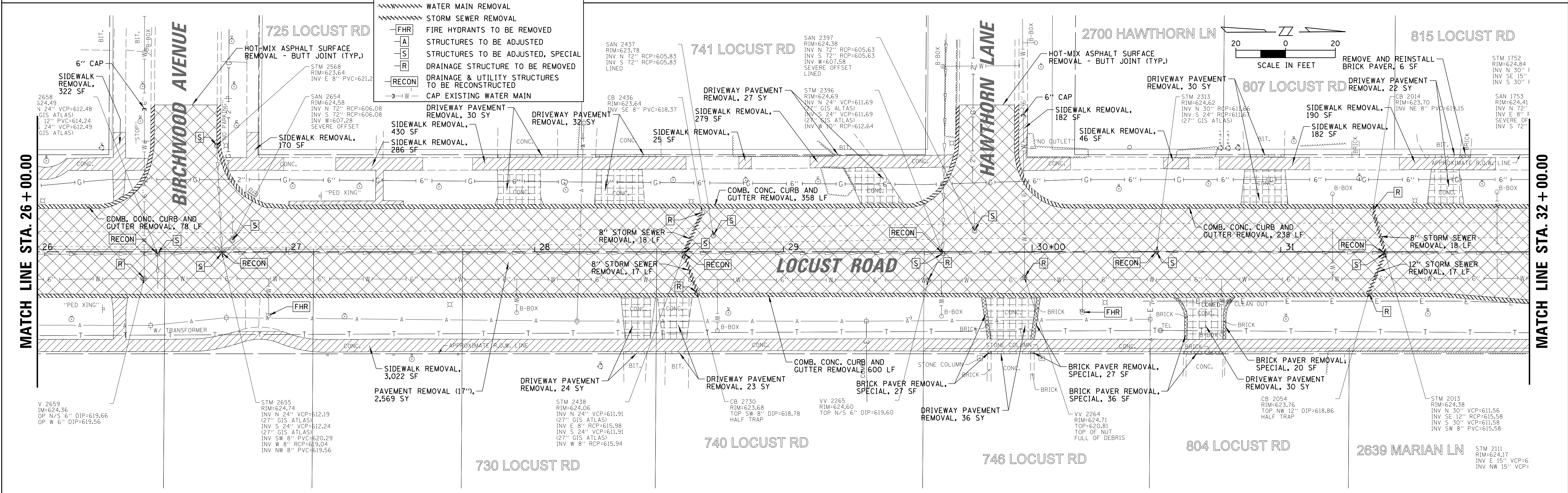
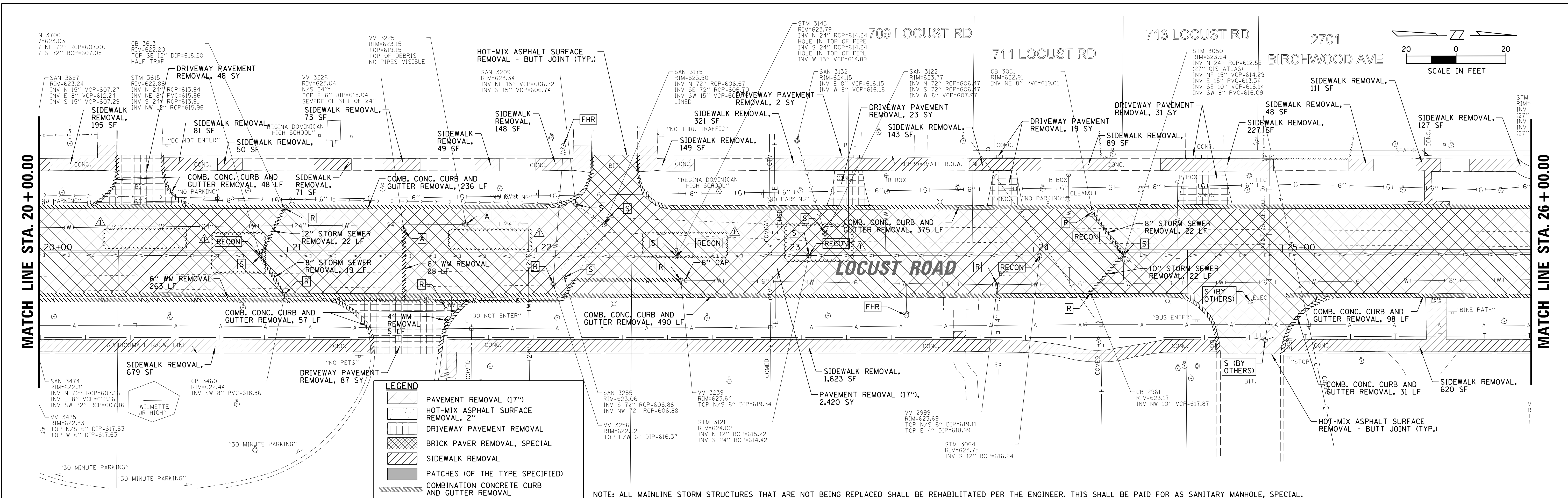
FILE NAME = N:\wilmette\170224\Civil\1\013_REM_LOCUST_01.SHT	USER NAME = jlapaglia	DESIGNED - LMF	REVISED - PER ADDENDUM #1 10/25/18
Default	PLOT SCALE = 20'	CHECKED - MEK	REVISED -
	PLOT DATE = 10/25/2018	DATE -	REVISED -

**STATE OF ILLINOIS
DEPARTMENT OF TRANSPORTATION**

**LOCUST ROAD
EXISTING CONDITIONS AND REMOVAL PLAN**

SCALE: 20' SHEET 11 OF 109 SHEETS STA. TO STA.

F.A.U. RT.	SECTION	COUNTY	TOTAL SHEETS	SHEET NO.
1076	12-00195-00-PV	COOK	109	11
				CONTRACT NO. 61F16
ILLINOIS FED. AID PROJECT				

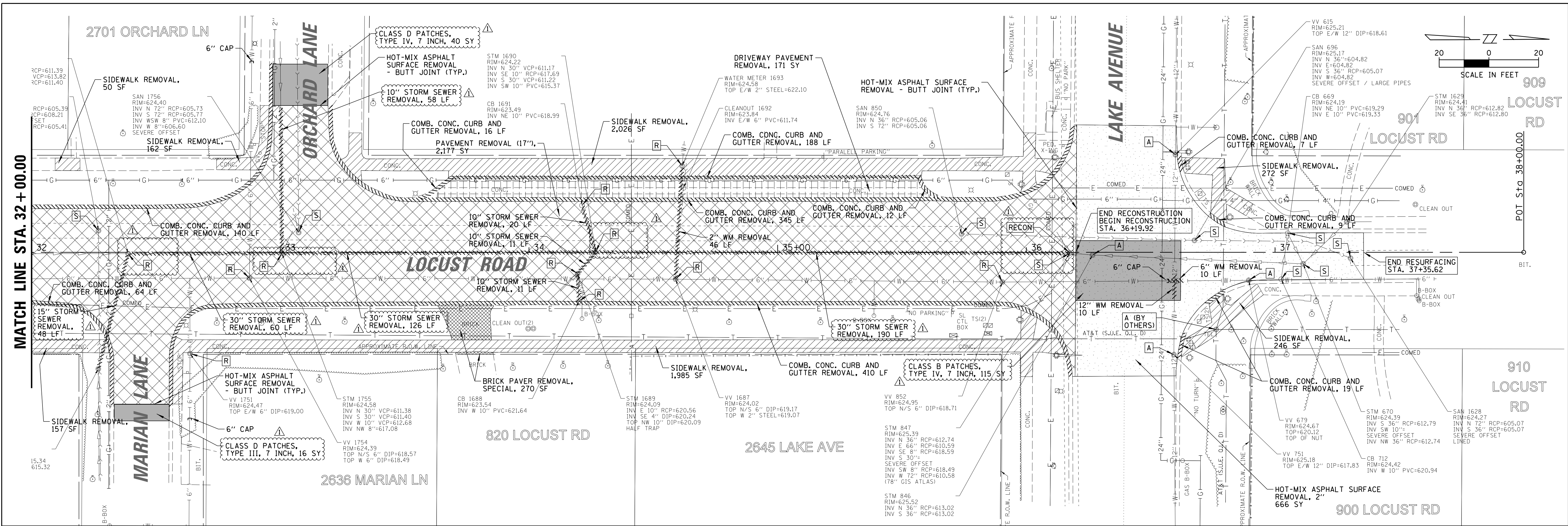


LEGEND

- PAVEMENT REMOVAL (17'')
- HOT-MIX ASPHALT SURFACE REMOVAL, 2''
- DRIVEWAY PAVEMENT REMOVAL
- BRICK PAVER REMOVAL, SPECIAL
- SIDEWALK REMOVAL
- PATCHES (OF THE TYPE SPECIFIED)
- COMBINATION CONCRETE CURB AND GUTTER REMOVAL
- WATER MAIN REMOVAL
- STORM SEWER REMOVAL
- FIRE HYDRANTS TO BE REMOVED
- STRUCTURES TO BE ADJUSTED
- DRAINAGE STRUCTURE TO BE REMOVED
- DRAINAGE & UTILITY STRUCTURES TO BE RECONSTRUCTED
- CAP EXISTING WATER MAIN

NOTE: ALL MAINLINE STORM STRUCTURES THAT ARE NOT BEING REPLACED SHALL BE REHABILITATED PER THE ENGINEER. THIS SHALL BE PAID FOR AS SANITARY MANHOLE, SPECIAL.

FILE NAME = N:\wilmette\170224\Civil\1\014.REM.LOCUST_02.SHT	USER NAME = jlapaglia	DESIGNED - LMF	REVISED - PER ADDENDUM #1 10/25/18	STATE OF ILLINOIS DEPARTMENT OF TRANSPORTATION	LOCUST ROAD EXISTING CONDITIONS AND REMOVAL PLAN			F.A.U. RTE. 1076	SECTION 12-00195-00-PV	COUNTY COOK	TOTAL SHEETS 109	SHEET NO. 12
Default	PLOT SCALE = 20'	CHECKED - MEK	REVISED -		SCALE: 20'	SHEET 12	OF 109 SHEETS	STA.	TO STA.	ILLINOIS FED. AID PROJECT		
	PLOT DATE = 10/25/2018	DATE	REVISED -		CONTRACT NO. 61F16							
					CONTRACT NO. 61F16							



NOTE: ALL MAINLINE STORM STRUCTURES THAT ARE NOT BEING REPLACED SHALL BE REHABILITATED PER THE ENGINEER. THIS SHALL BE PAID FOR AS SANITARY MANHOLE, SPECIAL.

LEGEND	
	PAVEMENT REMOVAL (17")
	HOT-MIX ASPHALT SURFACE REMOVAL, 2"
	DRIVEWAY PAVEMENT REMOVAL
	BRICK PAVER REMOVAL, SPECIAL
	SIDEWALK REMOVAL
	PATCHES (OF THE TYPE SPECIFIED)
	COMBINATION CONCRETE CURB AND GUTTER REMOVAL
	WATER MAIN REMOVAL
	STORM SEWER REMOVAL
	FIRE HYDRANTS TO BE REMOVED
	STRUCTURES TO BE ADJUSTED
	STRUCTURES TO BE ADJUSTED, SPECIAL
	DRAINAGE STRUCTURE TO BE REMOVED
	DRAINAGE & UTILITY STRUCTURES TO BE RECONSTRUCTED
	CAP EXISTING WATER MAIN

FILE NAME = N:\wilmette\170224\Civil\015_REM_LOCUST_03.SHT	USER NAME = jlapaglia	DESIGNED - LMF	REVISED - PER ADDENDUM #1 10/25/18
PLOT SCALE = 20'	CHECKED - MEK	DATE -	REVISED -
PLOT DATE = 10/25/2018	DATE -	REVISED -	REVISED -

**STATE OF ILLINOIS
DEPARTMENT OF TRANSPORTATION**

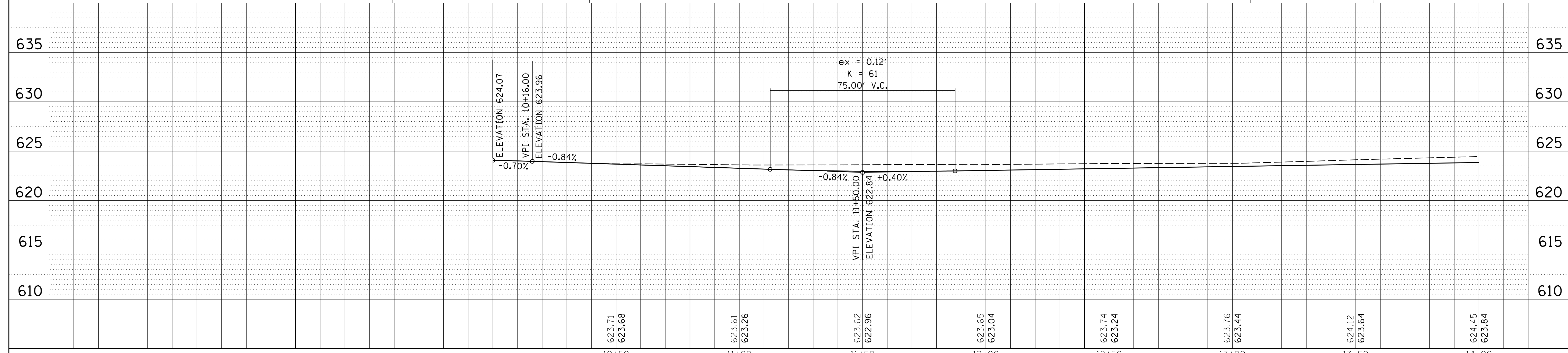
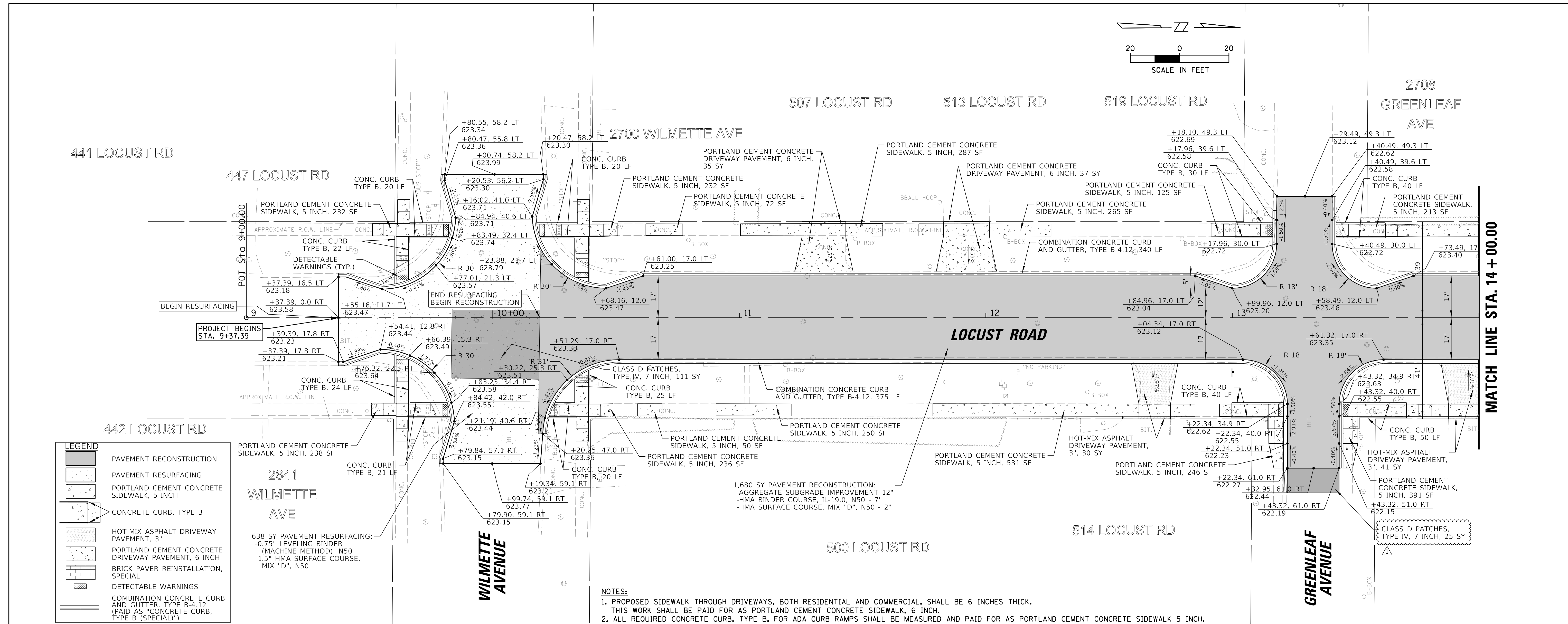
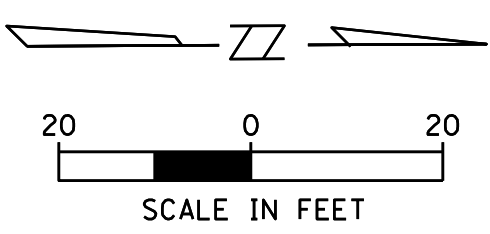
**LOCUST ROAD
EXISTING CONDITIONS AND REMOVAL PLAN**

SCALE: 20' SHEET 13 OF 109 SHEETS STA. TO STA.

F.A.U. RTE. 1076	SECTION 12-00195-00-PV	COUNTY COOK	TOTAL SHEETS 109	SHEET NO. 13
ILLINOIS FED. AID PROJECT			CONTRACT NO. 61F16	

DATE	
BY	
PLAN	SURVEYED
	PLOTTED
	CHECKED
	ALLOWED
	PAID FILE NAME
	NO.
NOTE BOOK	
NO.	

DATE	
BY	
PROFILE	SURVEYED
	PLOTTED
	GRADES CHECKED
	STRUCTURE NOTATIONS CHK'D
	NO.



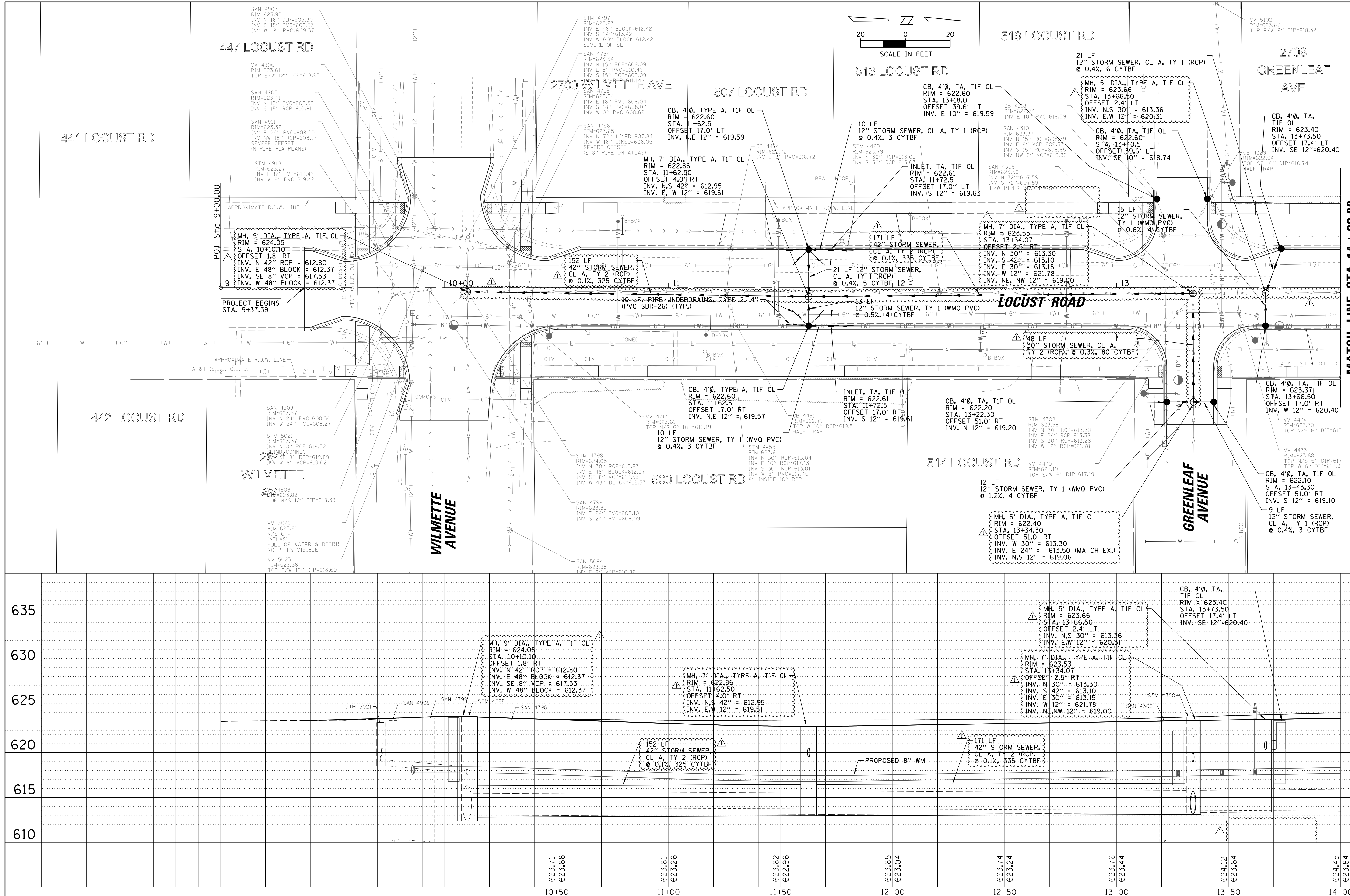
FILE NAME =	USER NAME = jlepajia	DESIGNED - LMF	REVISOR	F.A.U. RT. =	SECTION	COUNTY	TOTAL SHEETS	SHEET NO.
N:\wilmette\170224\Civil\018_RPP_LOCUST_01.SHT		DRAWN - PUN	REVISOR	1076	12-00195-00-PV	COOK	109	14
Default	PLOT DATE = 10/25/2018	CHECKED - MEK	REVISOR	CONTRACT NO. 61F16			ILLINOIS FED. AID PROJECT	
		DATE -	REVISOR	SCALE: 20'		SHEET 14 OF 109 SHEETS		STA. TO STA.

**STATE OF ILLINOIS
DEPARTMENT OF TRANSPORTATION**

**LOCUST ROAD
PROPOSED ROADWAY PLAN AND PROFILE**

DATE	BY	PLAN	SURVEYED	NOTED	CHECKED	DATE

DATE	BY	PROFILE	SURVEYED	NOTED	CHECKED	DATE



STATE OF ILLINOIS
DEPARTMENT OF TRANSPORTATION

LOCUST ROAD
PROPOSED STORM SEWER PLAN AND PROFILE

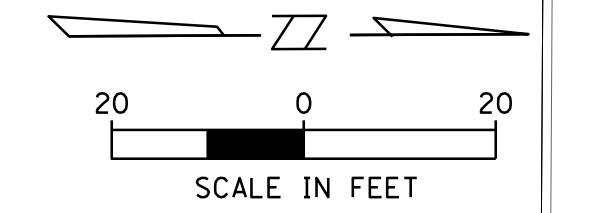
F.A.U. RTE.	SECTION	COUNTY	TOTAL SHEETS	SHEET NO.
1076	12-00195-00-PV	COOK	109	34
				CONTRACT NO. 61F16

FILE NAME =	N:\wilmette\170224\Civil\026_UPP.LOCUST.01.SHT
USER NAME =	jlepajia
DESIGNED -	LMF
DRAWN -	PUN
CHECKED -	MEK
DATE -	

REVISION	DATE	DESCRIPTION
1	10/25/18	PER ADDENDUM #1

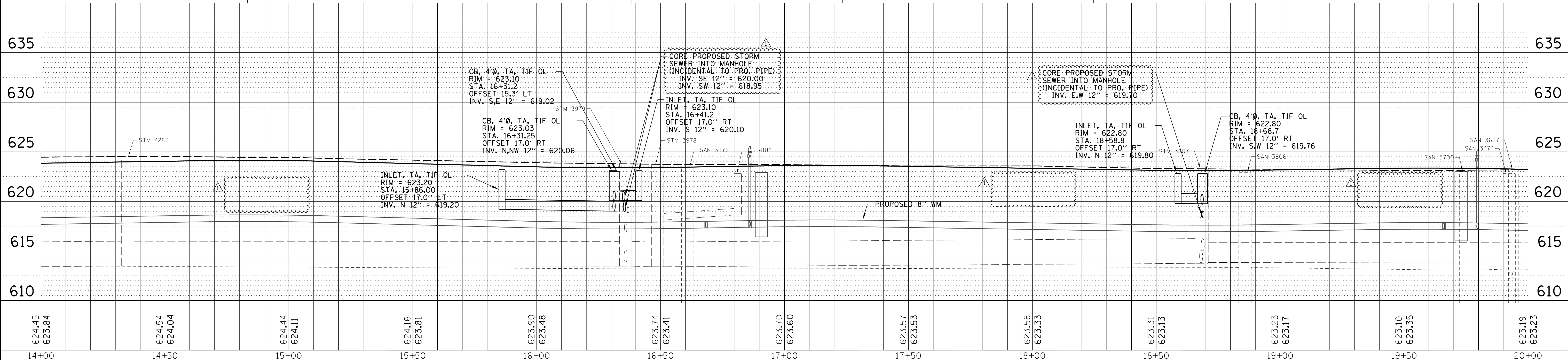
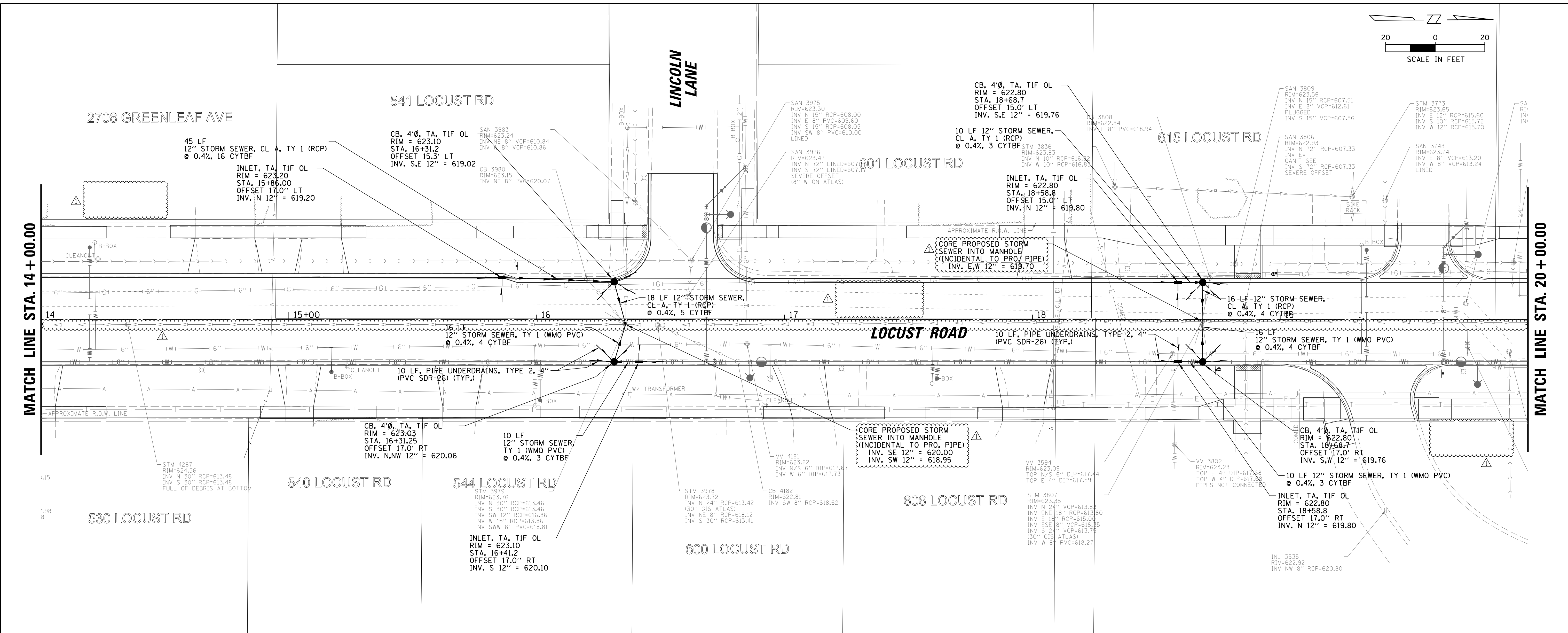
SCALE: 20' SHEET 34 OF 109 SHEETS STA. TO STA.

ILLINOIS FED. AID PROJECT

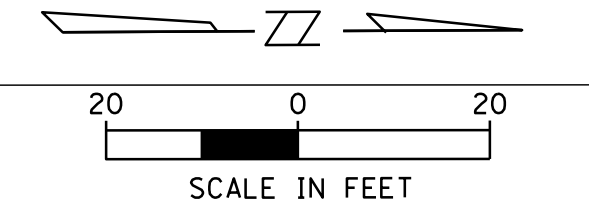


DATE	BY	FILE NAME
PLAN	SURVEYED	CHECKED
	PLOTTED	ALIGNED
	NOTE BOOK	NO. 1

DATE	BY	FILE NAME
PROFILE	SURVEYED	CHECKED
	PLOTTED	GRADES
		STRUCTURE
		NOTATIS
		CHKD

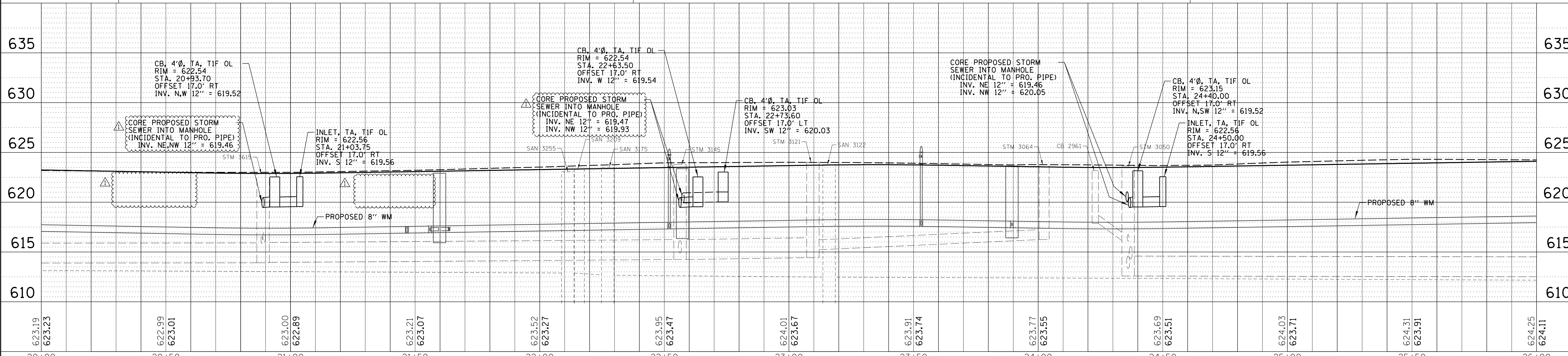
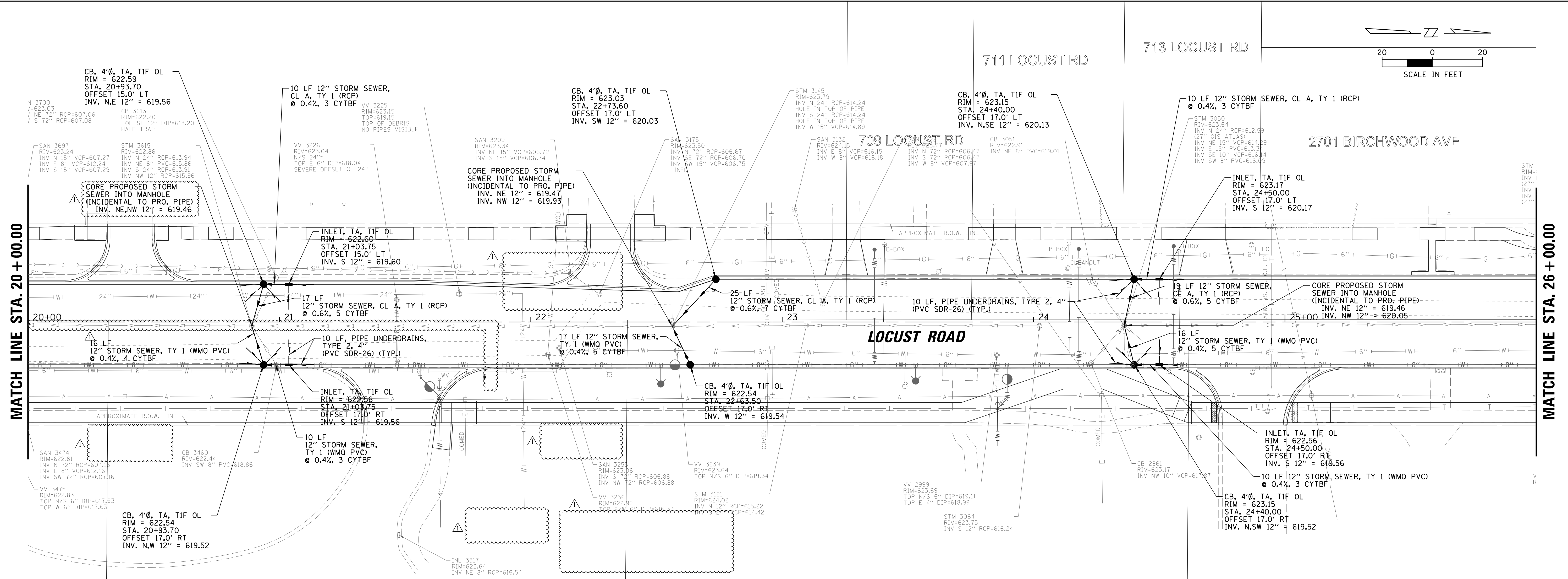


FILE NAME = N:\wilmette\170224\Civil\027_UPP_LOCUST.02	USER NAME = jlapaglia	DESIGNED - LMF	REVISED - PER ADDENDUM #1 10/25/18	STATE OF ILLINOIS DEPARTMENT OF TRANSPORTATION		LOCUST ROAD PROPOSED STORM SEWER PLAN AND PROFILE		F.A.U. RT. = 1076	SECTION = 12-00195-00-PV	COUNTY = COOK	TOTAL SHEETS = 109	SHEET NO. = 35
Plot Scale = 20'	Plot Date = 10/25/2018	CHECKED - MEK	REVISIED -			SCALE: 20'	SHEET 35	OF 109 SHEETS	STA. TO STA.	CONTRACT NO. 61F16		
ILLINOIS FED. AID PROJECT												



DATE	BY	DESCRIPTION
		DESIGNED
		DRAWN
		CHECKED
		PLotted
		NOTED
		REVISIONS

DATE	BY	DESCRIPTION
		DESIGNED
		DRAWN
		CHECKED
		PLotted
		NOTED
		REVISIONS



DESIGNED - LMF	REVISION 1 PER ADDENDUM #1 10/25/18
DRAWN - PUN	REVISION 2
CHECKED - MEK	REVISION 3
DATE -	REVISION 4

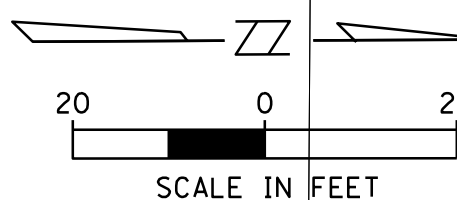
**STATE OF ILLINOIS
DEPARTMENT OF TRANSPORTATION**

**LOCUST ROAD
PROPOSED STORM SEWER PLAN AND PROFILE**

F.A.U. RT.E. 1076	SECTION 12-00195-00-PV	COUNTY COOK	TOTAL SHEETS 109	SHEET NO. 36
CONTRACT NO. 61F16			ILLINOIS FED. AID PROJECT	

SCALE: 20' SHEET 36 OF 109 SHEETS STA. TO STA.

ALL BACKFILL OF OPEN TRENCHES WITHIN THE COOK COUNTY R.O.W. (EAST LAKE AVENUE)
SHALL BE FA-6 TRENCH BACKFILL.

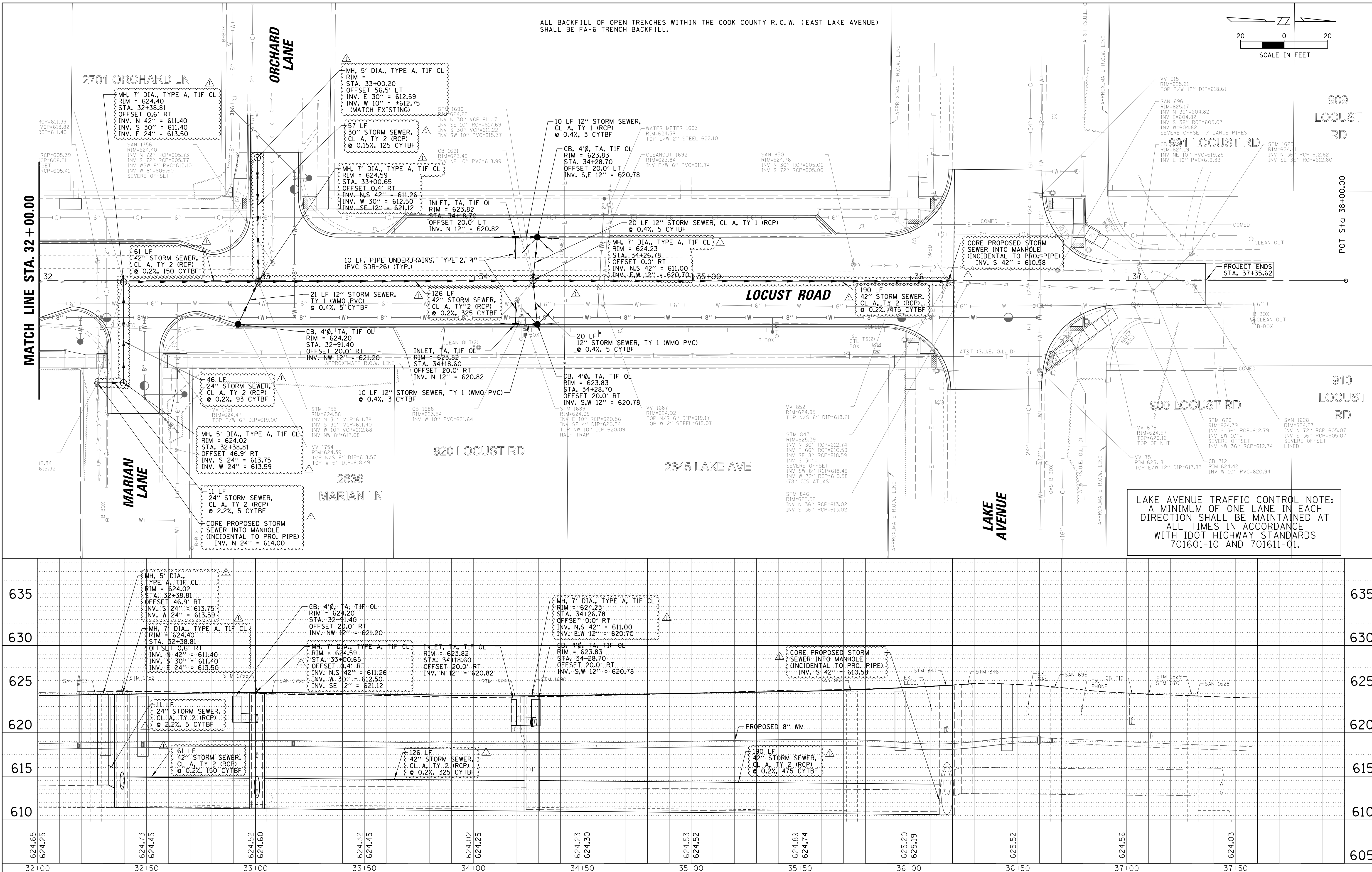


DATE	BY	SURVEYED	CHECKED
		PLOTTED	ALIGNED
		NOTE BOOK	FILE NAME
		NO.	

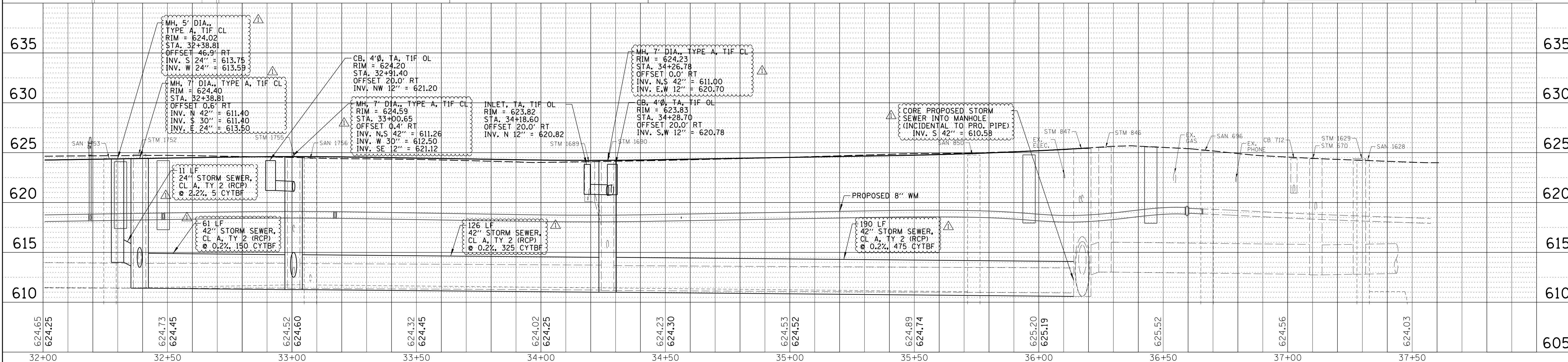
DATE	BY	SURVEYED	CHECKED
		PLOTTED	ALIGNED
		NOTE BOOK	FILE NAME
		NO.	

MATCH LINE STA. 32+00.00

POT. STA. 38+00.00



LAKE AVENUE TRAFFIC CONTROL NOTE:
A MINIMUM OF ONE LANE IN EACH DIRECTION SHALL BE MAINTAINED AT ALL TIMES IN ACCORDANCE WITH IDOT HIGHWAY STANDARDS 701601-10 AND 701611-01.



FILE NAME =	USER NAME = jlepajia	DESIGNED - LMF	REVISED - PER ADDENDUM #1 10/25/18
N:\wilmette\170224\Civil\030_UPP.LOCUST.05		DRAWN - PUN	REVISED -
Default	PLOT SCALE = 20'	CHECKED - MEK	REVISED -
	PLOT DATE = 10/25/2018	DATE	REVISED -

**STATE OF ILLINOIS
DEPARTMENT OF TRANSPORTATION**

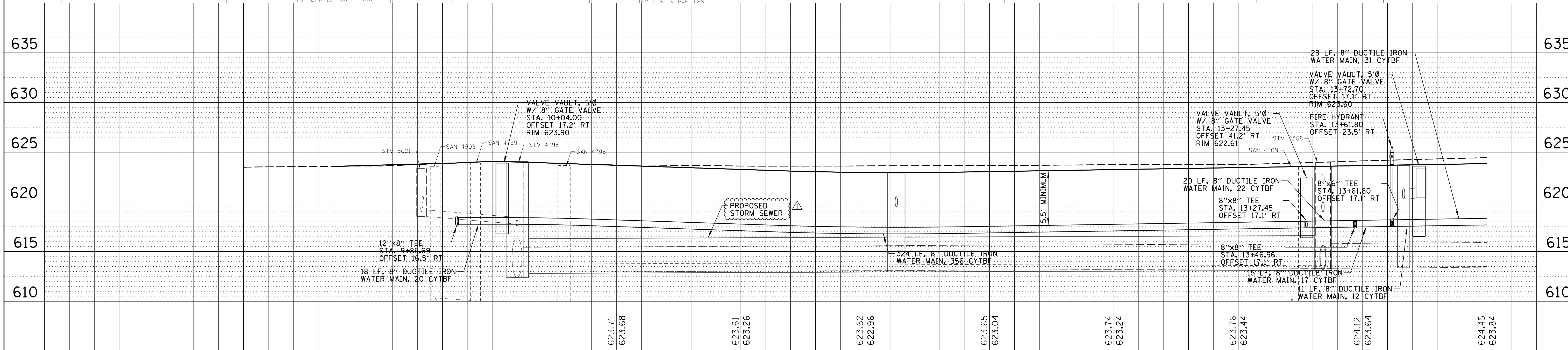
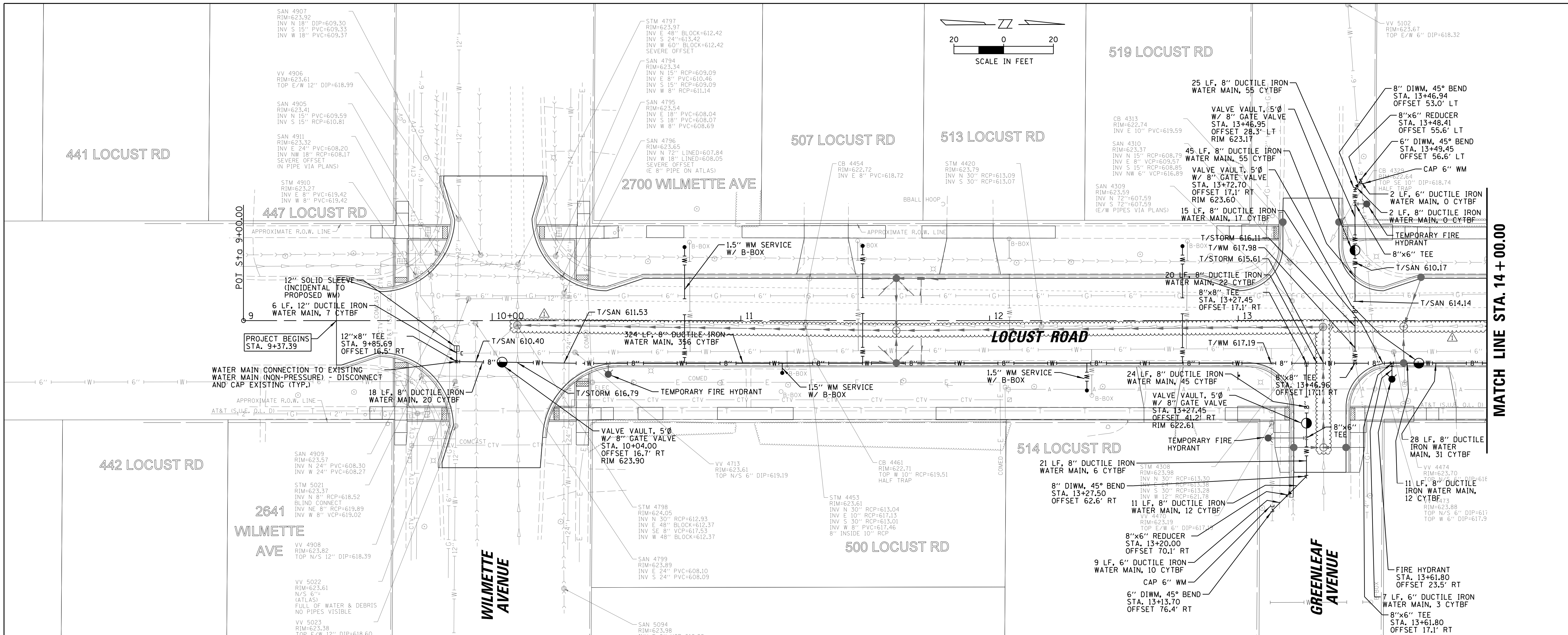
**LOCUST ROAD
PROPOSED STORM SEWER PLAN AND PROFILE**

F.A.U. RTE.	SECTION	COUNTY	TOTAL SHEETS	SHEET NO.
1076	12-00195-00-PV	COOK	109	38
CONTRACT NO. 61F16				

SCALE: 20' SHEET 38 OF 109 SHEETS STA. TO STA. ILLINOIS FED. AID PROJECT

PLAN	SURVEYED	DATE
	PLOTTED	
	CHECKED	
	ALLOTTED	
	FILE NAME	

PROFILE	SURVEYED	DATE
	GRADES	
	CHECKED	
	STRUCTURE	
	NOTATIONS	



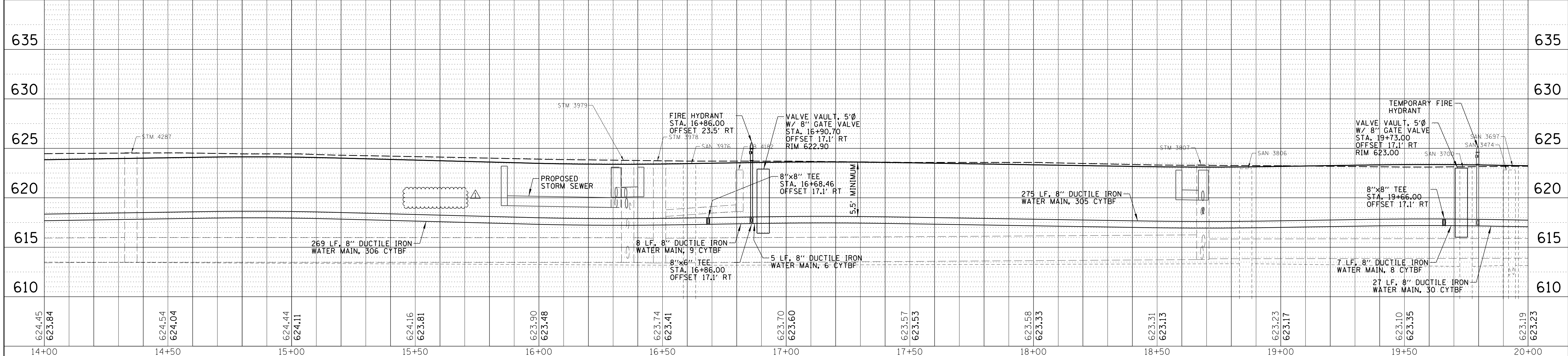
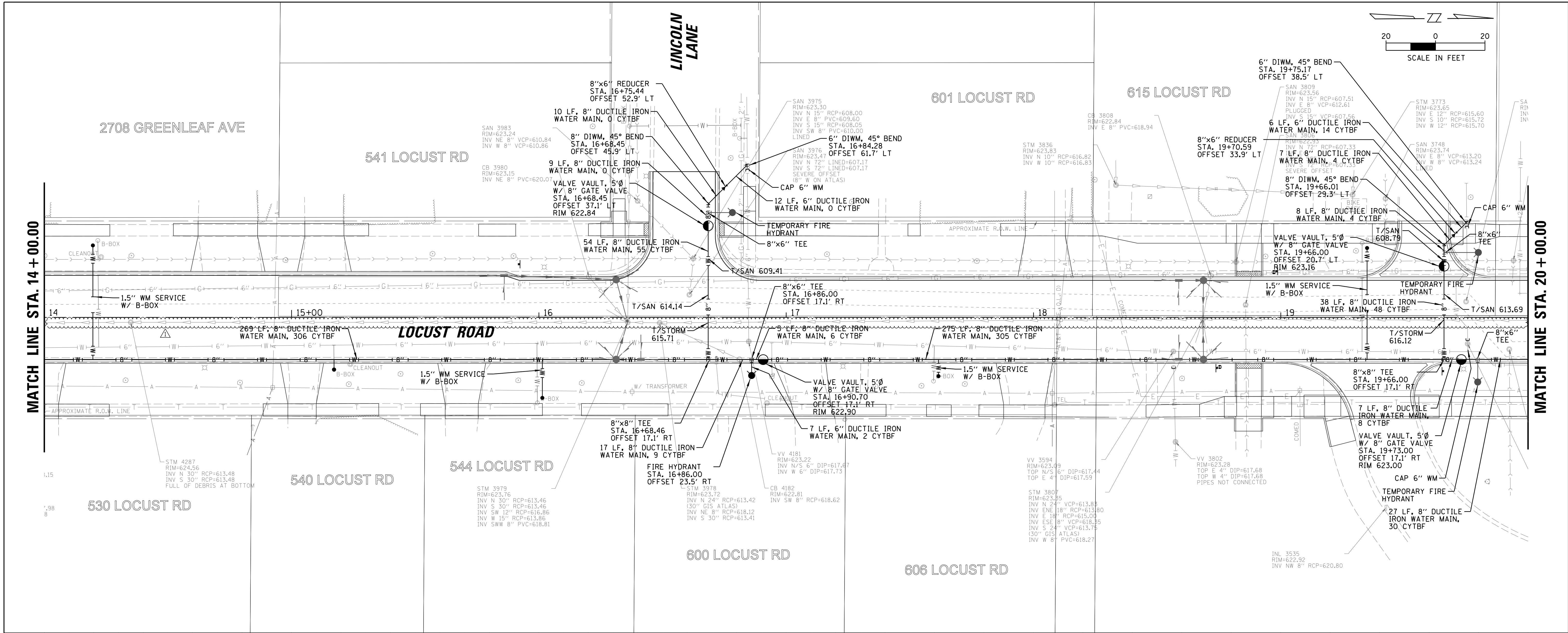
FILE NAME = N:\wilmette\170224\Civil\031.WMPP.LOCUST_01.SHT	USER NAME = jlapaglia	DESIGNED - LMF	DRAWN - PUN	CHECKED - MEK	DATE - 10/25/2018	REVISED - PER ADDENDUM #1 10/25/18	STATE OF ILLINOIS DEPARTMENT OF TRANSPORTATION	LOCUST ROAD PROPOSED WATER MAIN PLAN AND PROFILE	F.A.U. RT. = 1076	SECTION = 12-00195-00-PV	COUNTY = COOK	TOTAL SHEETS = 109	SHEET NO. = 39
Default	PLOT SCALE = 20'	PLOT DATE = 10/25/2018	DATE -				SCALE: 20'	SHEET 39 OF 109 SHEETS	STA. TO STA.	ILLINOIS FED. AID PROJECT			

DATE	BY

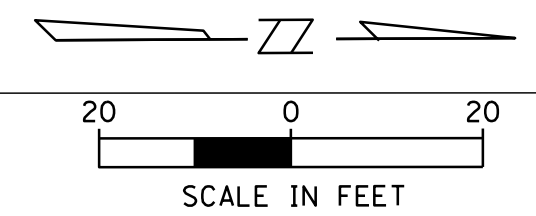
PLAN	SURVEYED	NOTED	CHECKED	DATE

DATE	BY

PROFILE	SURVEYED	NOTED	CHECKED	DATE

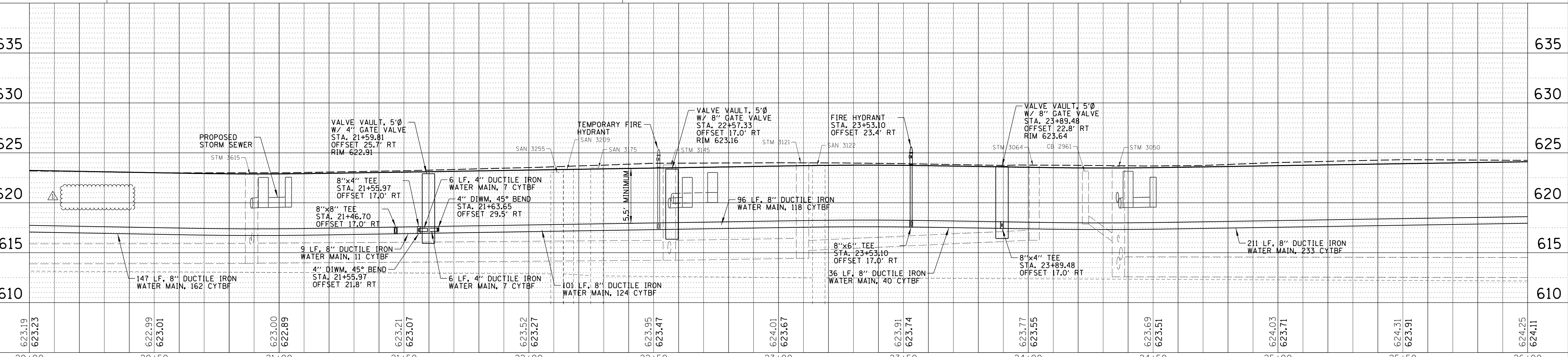
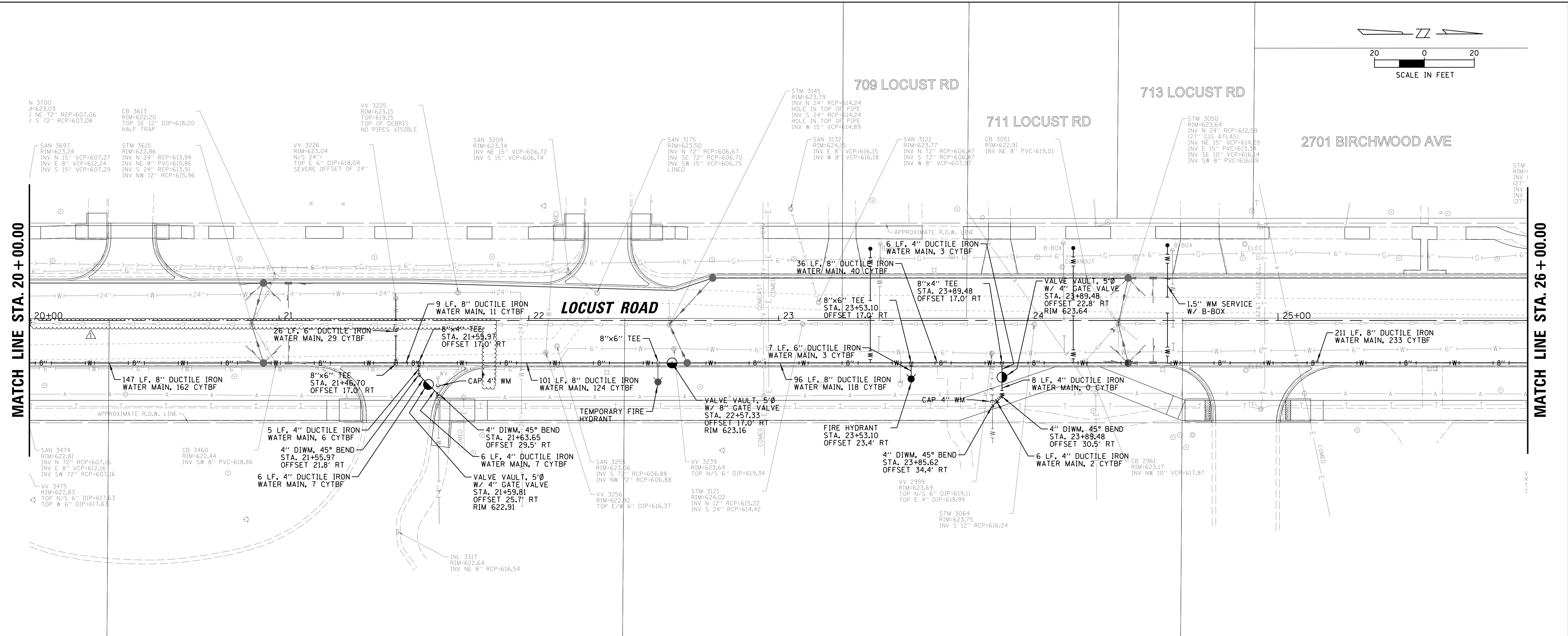


FILE NAME = N:\wilmette\170224\Civil\032_WMPP_LOCUST_02.SHT	USER NAME = jlapaglia	DESIGNED - LMF	REVISIONS	STATE OF ILLINOIS DEPARTMENT OF TRANSPORTATION			LOCUST ROAD PROPOSED WATER MAIN PLAN AND PROFILE			F.A.U. RTE. 1076	SECTION 12-00195-00-PV	COUNTY COOK	TOTAL SHEETS 109	SHEET NO. 40
PLOT SCALE = 20'	CHECKED - MEK	DATE - 10/25/2018	REVISIONS	SCALE: 20'	SHEET 40	OF 109 SHEETS	STA. TO STA.	CONTRACT NO. 61F16 ILLINOIS FED. AID PROJECT						



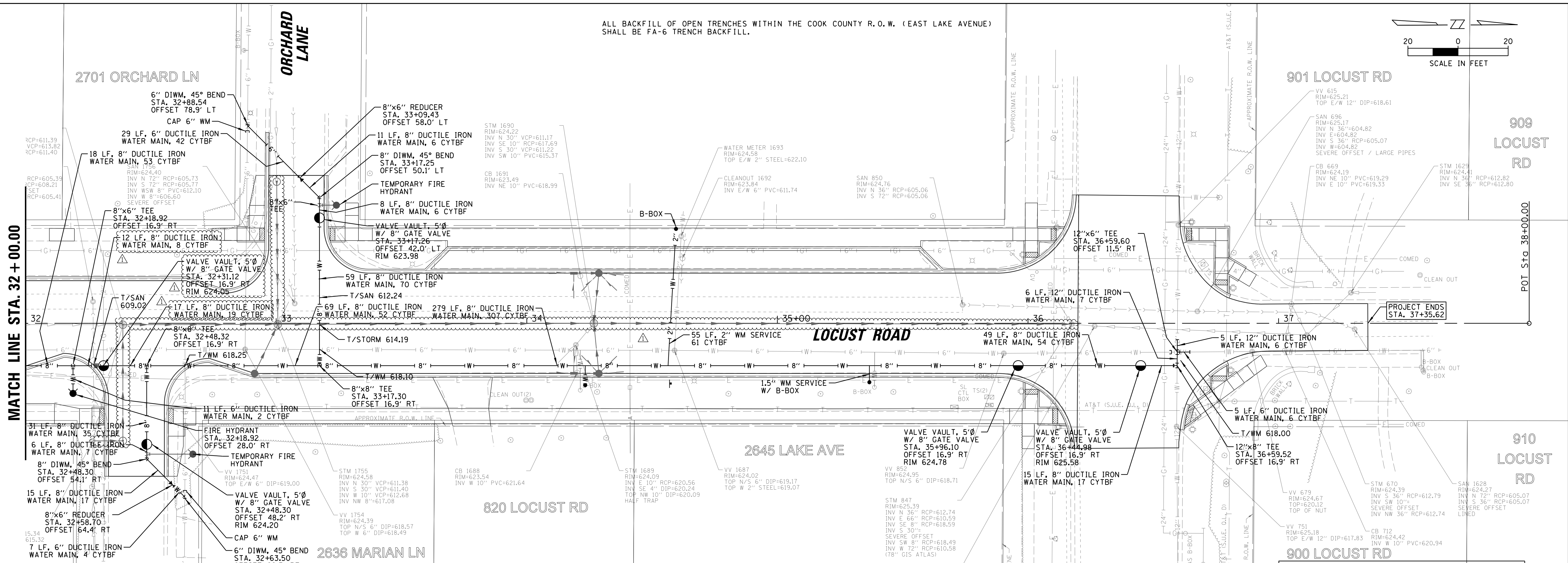
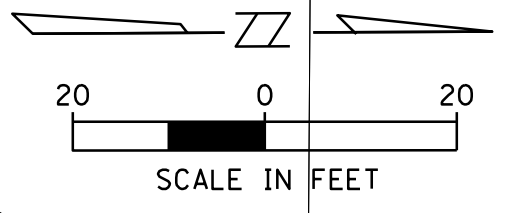
DATE	BY

DATE	BY

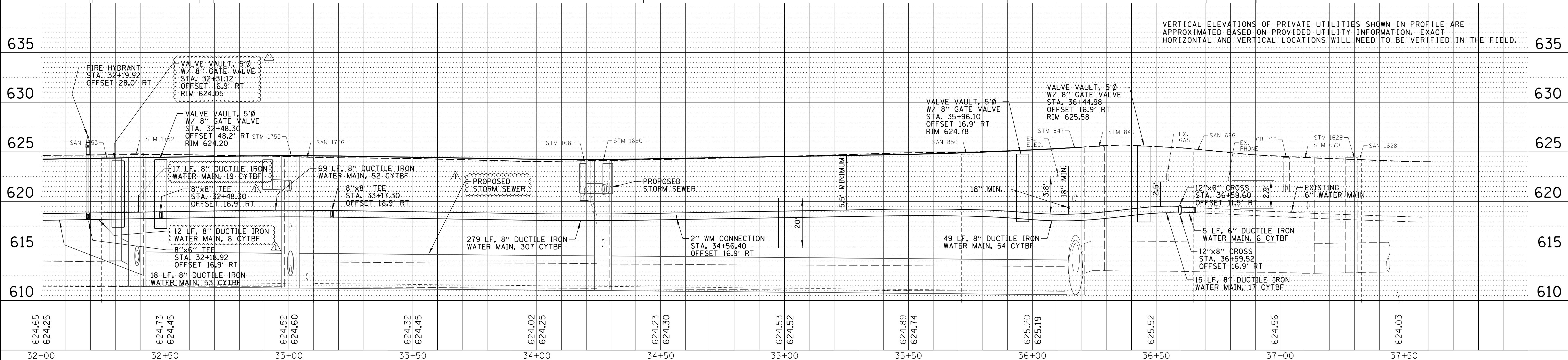


FILE NAME = N:\wilmette\170224\Civil\033_WMPP_LOCUST_03.SHT	USER NAME = jlapaglia	DESIGNED - LMF	REVISED - PER ADDENDUM #1 10/25/18	<p align="center">STATE OF ILLINOIS DEPARTMENT OF TRANSPORTATION</p> <p align="center">LOCUST ROAD PROPOSED WATER MAIN PLAN AND PROFILE</p>	F.A.U. R.T.E. = 1076	SECTION = 12-00195-00-PV	COUNTY = COOK	TOTAL SHEETS = 109	SHEET NO. = 41
PLOT SCALE = 20'	CHECKED - MEK	REVISOR -	REVISOR -		SCALE: 20'	SHEET 41	OF 109 SHEETS	STA. TO STA.	ILLINOIS FED. AID PROJECT
DATE = 10/25/2018	DATE =	REVISOR -	REVISOR -		CONTRACT NO. 61F16				

ALL BACKFILL OF OPEN TRENCHES WITHIN THE COOK COUNTY R.O.W. (EAST LAKE AVENUE)
SHALL BE FA-6 TRENCH BACKFILL.



LAKE AVENUE TRAFFIC CONTROL NOTE:
A MINIMUM OF ONE LANE IN EACH
DIRECTION SHALL BE MAINTAINED AT
ALL TIMES IN ACCORDANCE
WITH IDOT HIGHWAY STANDARDS
701601-10 AND 701611-01.



VERTICAL ELEVATIONS OF PRIVATE UTILITIES SHOWN IN PROFILE ARE
APPROXIMATED BASED ON PROVIDED UTILITY INFORMATION. EXACT
HORIZONTAL AND VERTICAL LOCATIONS WILL NEED TO BE VERIFIED IN THE FIELD.

DATE	
BY	
PLAN	
SURVEYED	
PLOTTED	
CHECKED	
ALIGNED	
FILE NAME	
NOTE BOOK NO.	
CAAD FILE NAME	

DATE	
BY	
PROFILE	
SURVEYED	
PLOTTED	
GRADES CHECKED	
STRUCTURE	
NOTATIONS CHKD	
NOTE BOOK NO.	
CAAD FILE NAME	

FILE NAME = N:\wilmette\170224\Civil\035_WMPP_LOCAST_03.SHT	DESIGNED - LMF	REVISOR - PER ADDENDUM #1 10/25/18	STATE OF ILLINOIS DEPARTMENT OF TRANSPORTATION LOCUST ROAD PROPOSED WATER MAIN PLAN AND PROFILE	F.A.U. RT. 1076	SECTION 12-00195-00-PV	COUNTY COOK	TOTAL SHEETS 109	SHEET NO. 43	
PLOT SCALE = 20'	CHECKED - MEK	REVISOR -		SCALE: 20'	SHEET 43	OF 109 SHEETS	STA. TO STA.	ILLINOIS FED. AID PROJECT	CONTRACT NO. 61F16
PLOT DATE: 10/25/2018	DATE -	REVISOR -							