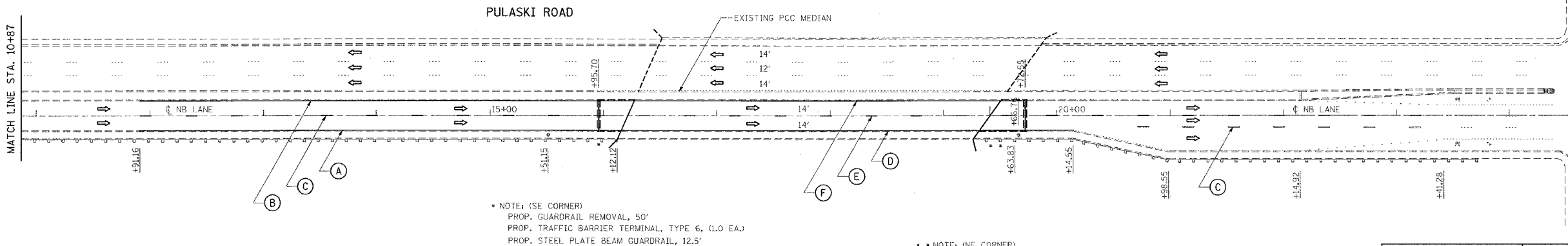
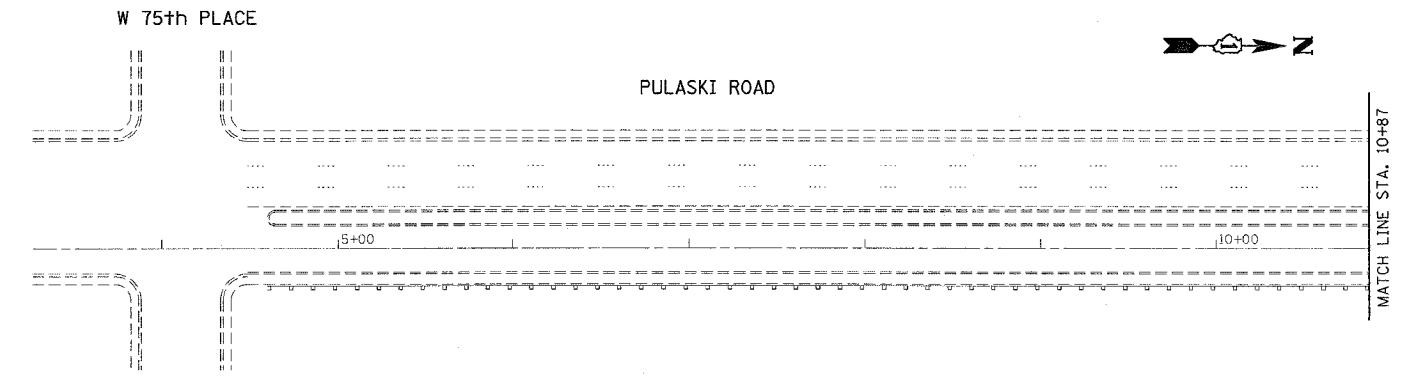
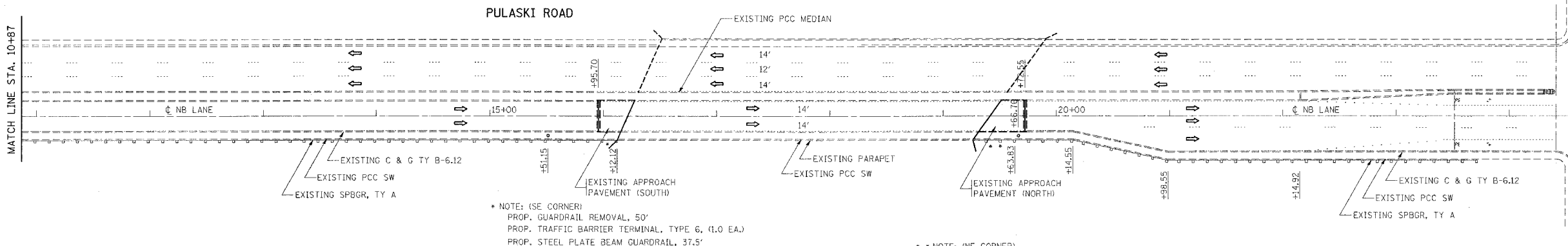
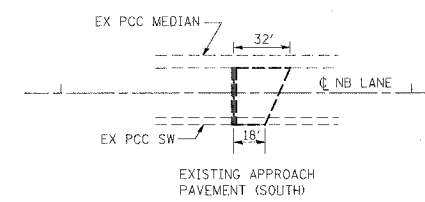
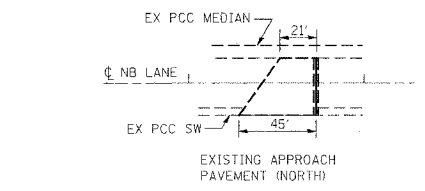
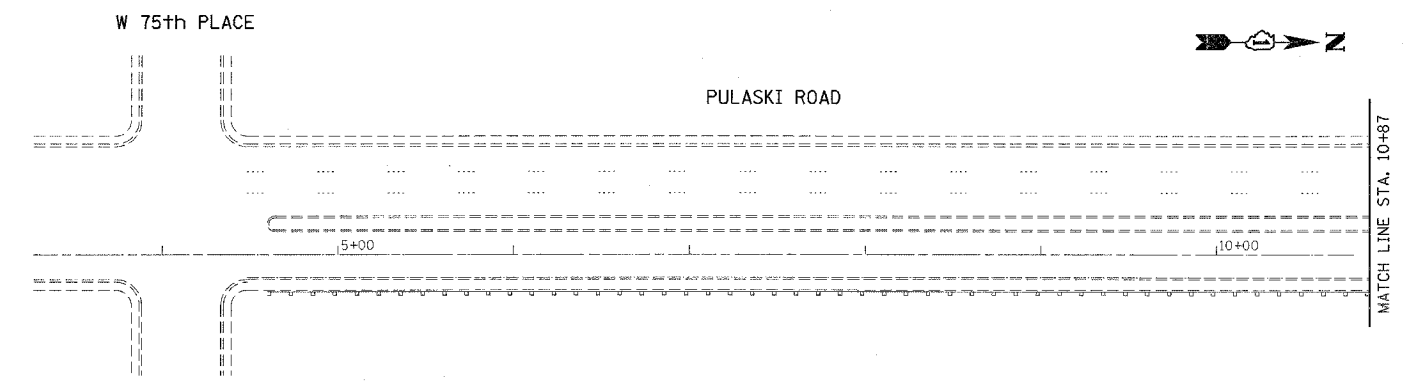


F.A.P. RTE.	SECTION	COUNTY	TOTAL SHEETS	SHEET NO.
368	1919 VB-R-1	COOK	47	5
STA.		TO STA.		
FED. ROAD DIST. NO. 1		ILLINOIS FED. AID PROJECT		
CONTRACT NO. 60C11				



LEGEND

- (A) THERMOPLASTIC PAVEMENT MARKING
4" SOLID WHITE EDGE LINE
- (B) THERMOPLASTIC PAVEMENT MARKING
4" SOLID YELLOW EDGE LINE
- (C) THERMOPLASTIC PAVEMENT MARKING
4" WHITE SKIP-DASH LINE
- (D) POLYUREA PAVEMENT MARKING TYPE I
4" SOLID WHITE EDGE LINE
- (E) POLYUREA PAVEMENT MARKING TYPE I
4" WHITE SKIP-DASH LINE
- (F) POLYUREA PAVEMENT MARKING TYPE I
4" SOLID YELLOW EDGE LINE

REVISIONS	
NAME	DATE

ILLINOIS DEPARTMENT OF TRANSPORTATION
**FAP 368: PULASKI ROAD (NB)
OVER BRC RAILROAD**
**ROADWAY AND PAVEMENT
MARKING PLANS**
SCALE: NTS
DATE
DRAWN BY
CHECKED BY