

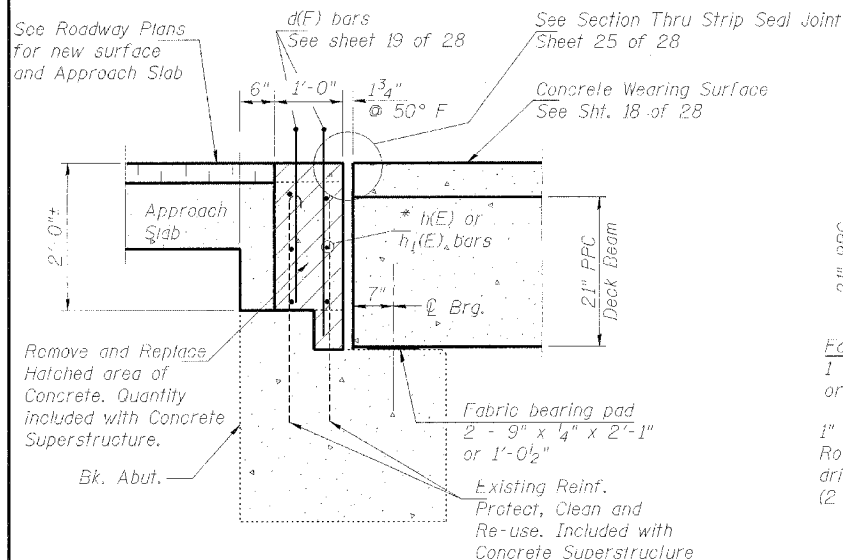
NOTES

1. After beams have been erected, holes shall be drilled into substructure and anchor dowels placed. Dowel holes shall be filled with non-shrink grout to top of beam and allowed to cure min. 24 hrs. prior to grouting the shear keys.
2. All horizontal dimensions are at right angles to beam ends.
3. See Sht. 9 to 16 of 28 for Bearing Pad Details.

**STATE OF ILLINOIS
DEPARTMENT OF TRANSPORTATION**

ROUTE NO. F.A.P. 368	SECTION 1919 VB-R-1	COUNTY Cook	SHEETS 47	SHEET NO. 26	SHEET NO. 17 28 SHEETS
----------------------------	---------------------------	----------------	--------------	-----------------	---------------------------

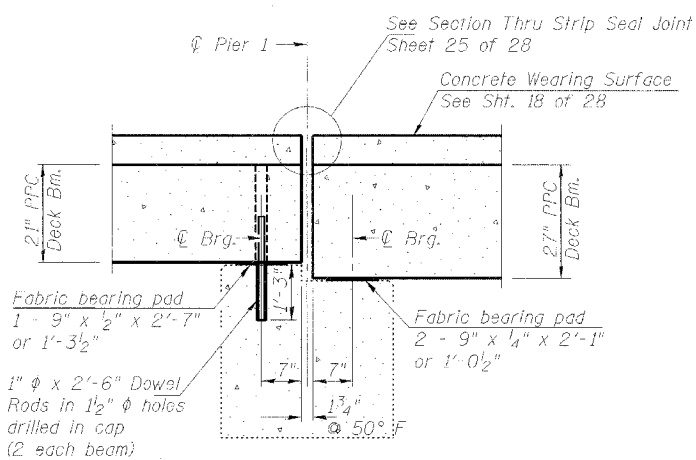
Contract # 60C11



SECTION THRU SOUTH ABUTMENT

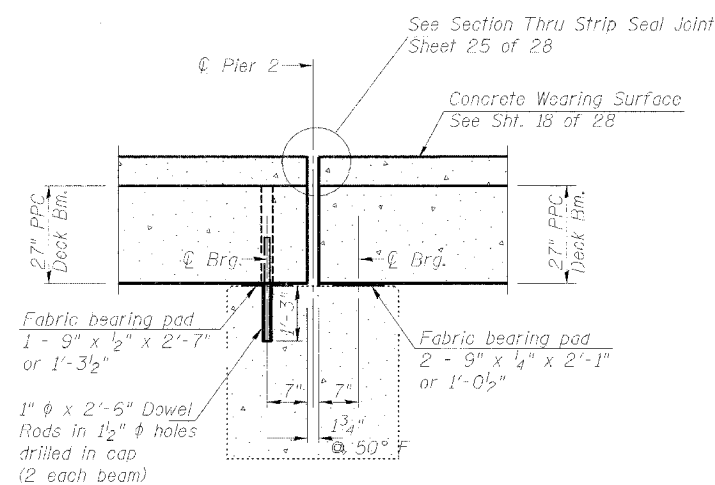
(at right angles to abut.)

* Provide 6 Bar splioers (E) for #5 bars at Stage Construction Joint.



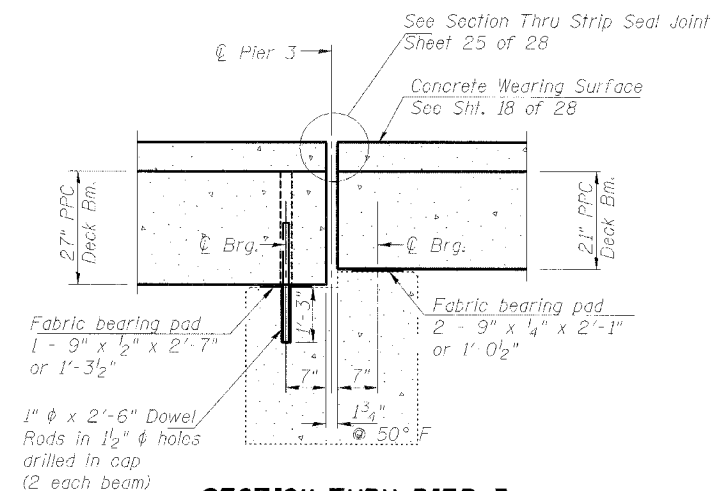
SECTION THRU PIER 1

(at right angles to pier)



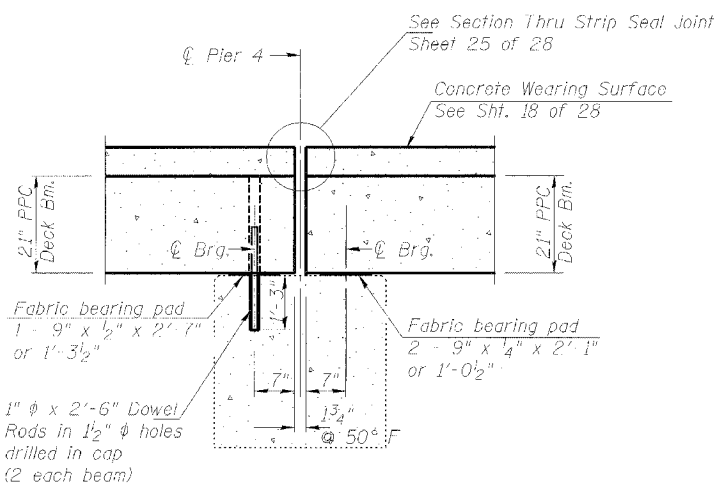
SECTION THRU PIER 2

(at right angles to pier)



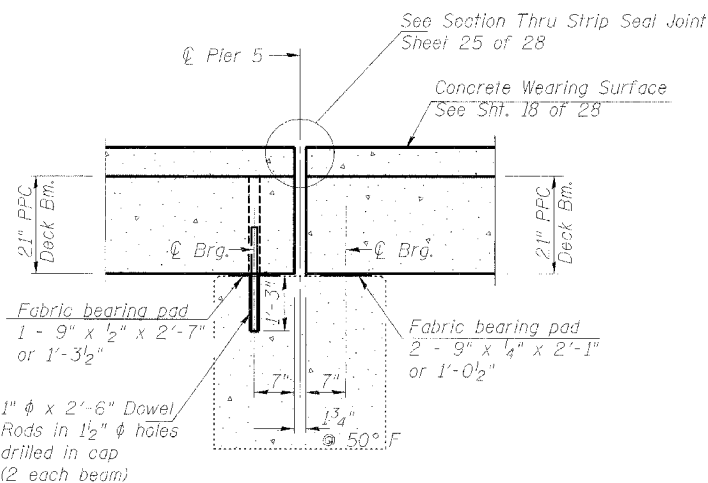
SECTION THRU PIER 3

(at right angles to pier)



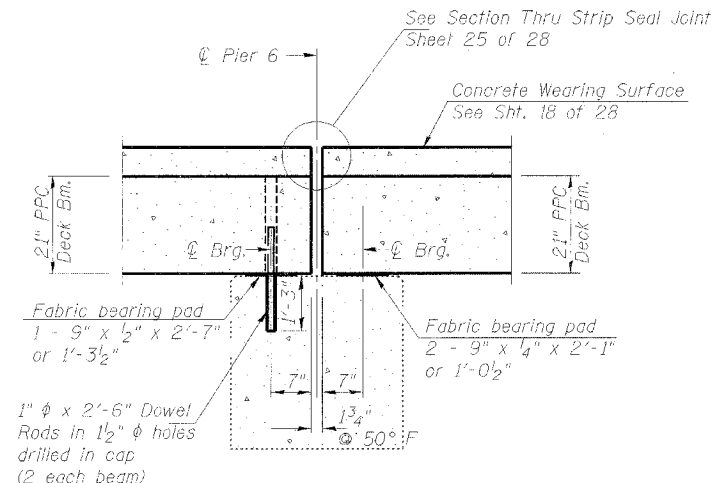
SECTION THRU PIER 4

(at right angles to pier)



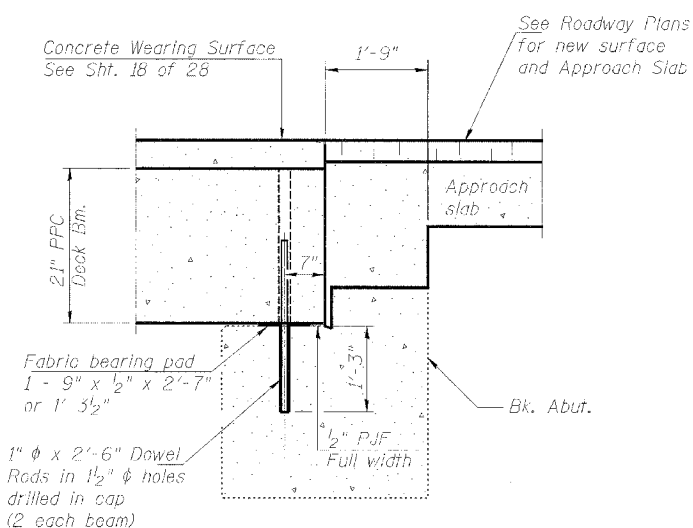
SECTION THRU PIER 5

(at right angles to pier)



SECTION THRU PIER 6

(at right angles to pier)



SECTION THRU NORTH ABUTMENT

(at right angles to abut.)

**SECTIONS THROUGH
ABUTMENTS AND PIERS
F.A.P. 368 (PULASKI ROAD)
OVER BRC RAILROAD,
SECTION 1919 VB-R-1,
COOK COUNTY, STA. 17+81.60
STRUCTURE NO. 016-1020**

DESIGNED	DDB
CHECKED	LLV
DRAWN	MGM
CHECKED	DDB

STS Consultants
111 NE Jefferson Ave.
Peoria, Illinois 61602
Ph (309) 676-8464
FAX (309) 676-5445
IL Design Firm Reg. No. 184-001518