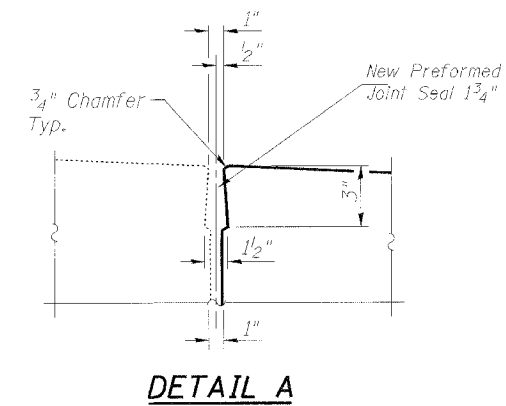
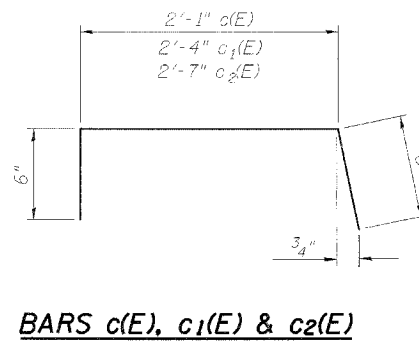
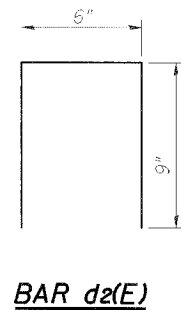
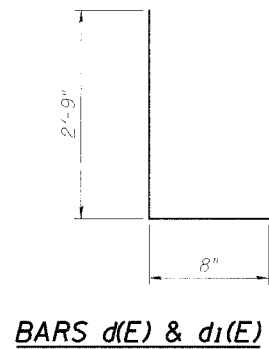
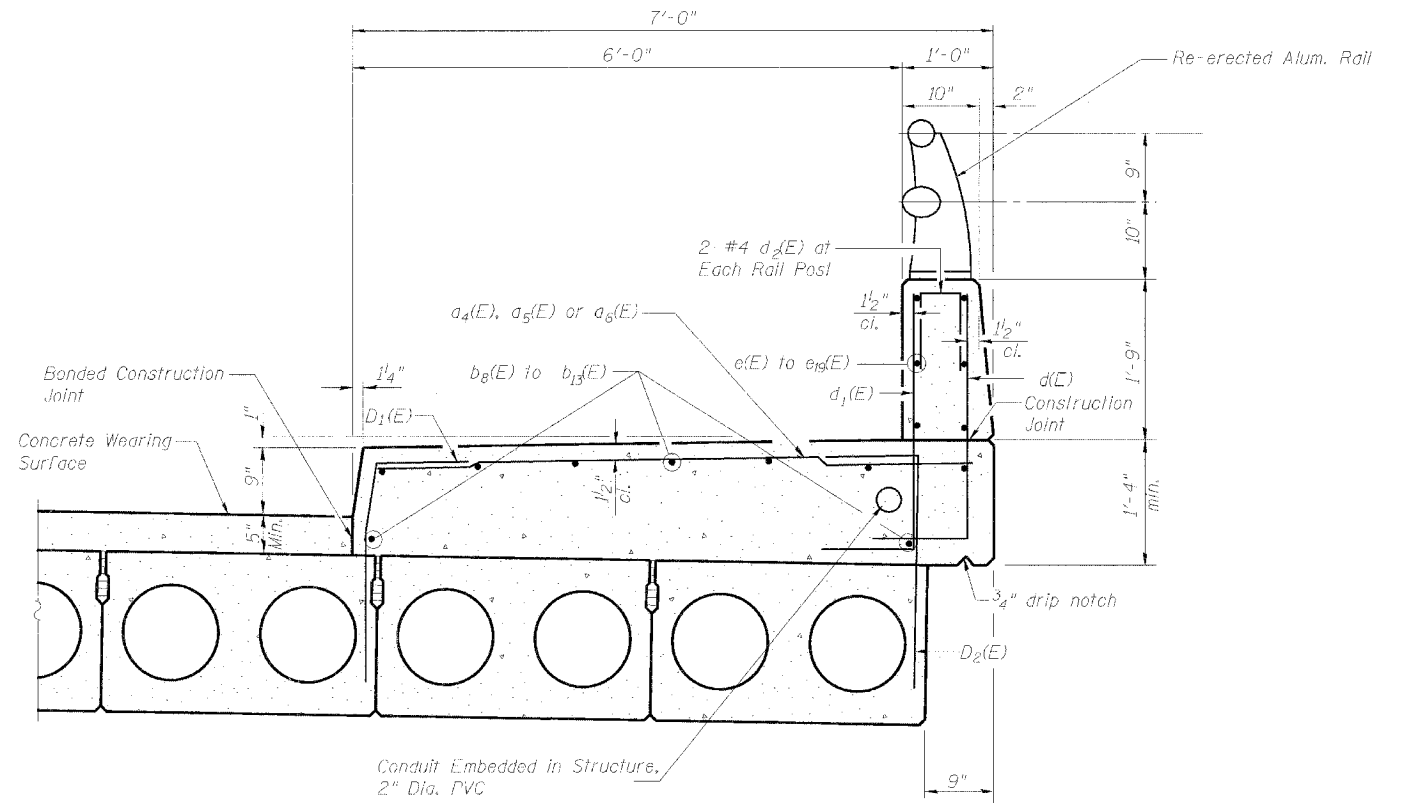
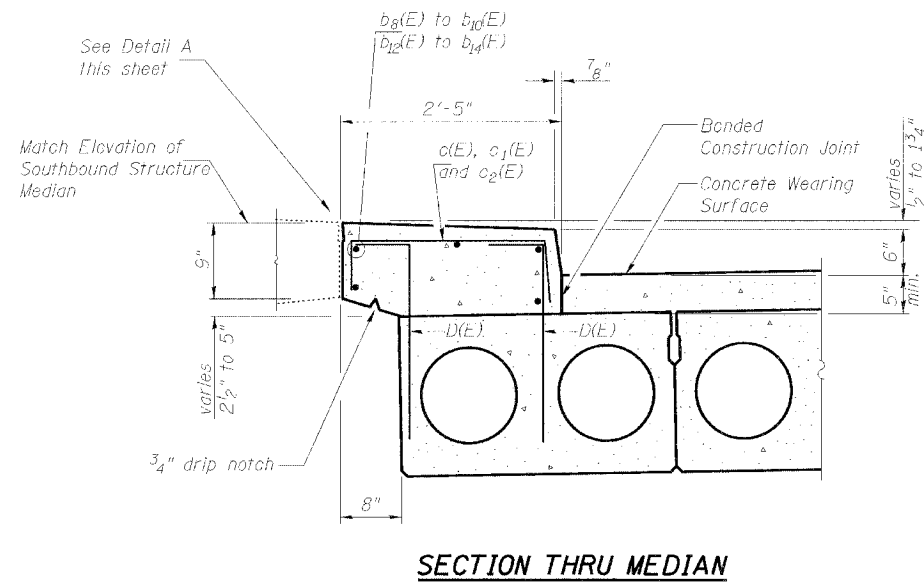


STATE OF ILLINOIS  
DEPARTMENT OF TRANSPORTATION

ROUTE NO.	SECTION	QUANTITY	TOTAL SHEETS	SHEET NO.	SHEET NO. 20
F.A.P. 368	1919 VB-R-1	Cook	47	29	28 SHEETS
FED. ROAD DIST. NO. 7	ILLINOIS	FED. AID PROJECT			

Contract # 60C11

Notes:  
See Sheets 9 to 16 of 28 for D(E), D<sub>1</sub>(F) and D<sub>2</sub>(E) bars.  
Spans 1, 4, 5, 6 & 7 with 21" x 36" beams shown.  
Spans 2 & 3 with 27" x 36" beams similar.



DESIGNED	DDB
CHECKED	LLV
DRAWN	MGM
CHECKED	DDB

**SIDEWALK & MEDIAN SECTIONS**  
F.A.P. 368 (PULASKI ROAD)  
OVER BRC RAILROAD,  
SECTION 1919 VB-R-1,  
COOK COUNTY, STA. 17+81.60  
STRUCTURE NO. 016-1020

**STS Consultants**  
111 NE Jefferson Ave.  
Peoria, Illinois 61602  
Ph.(309)676-8464  
FAX(309)676-5445  
IL Design Firm Reg. No. 184-001518