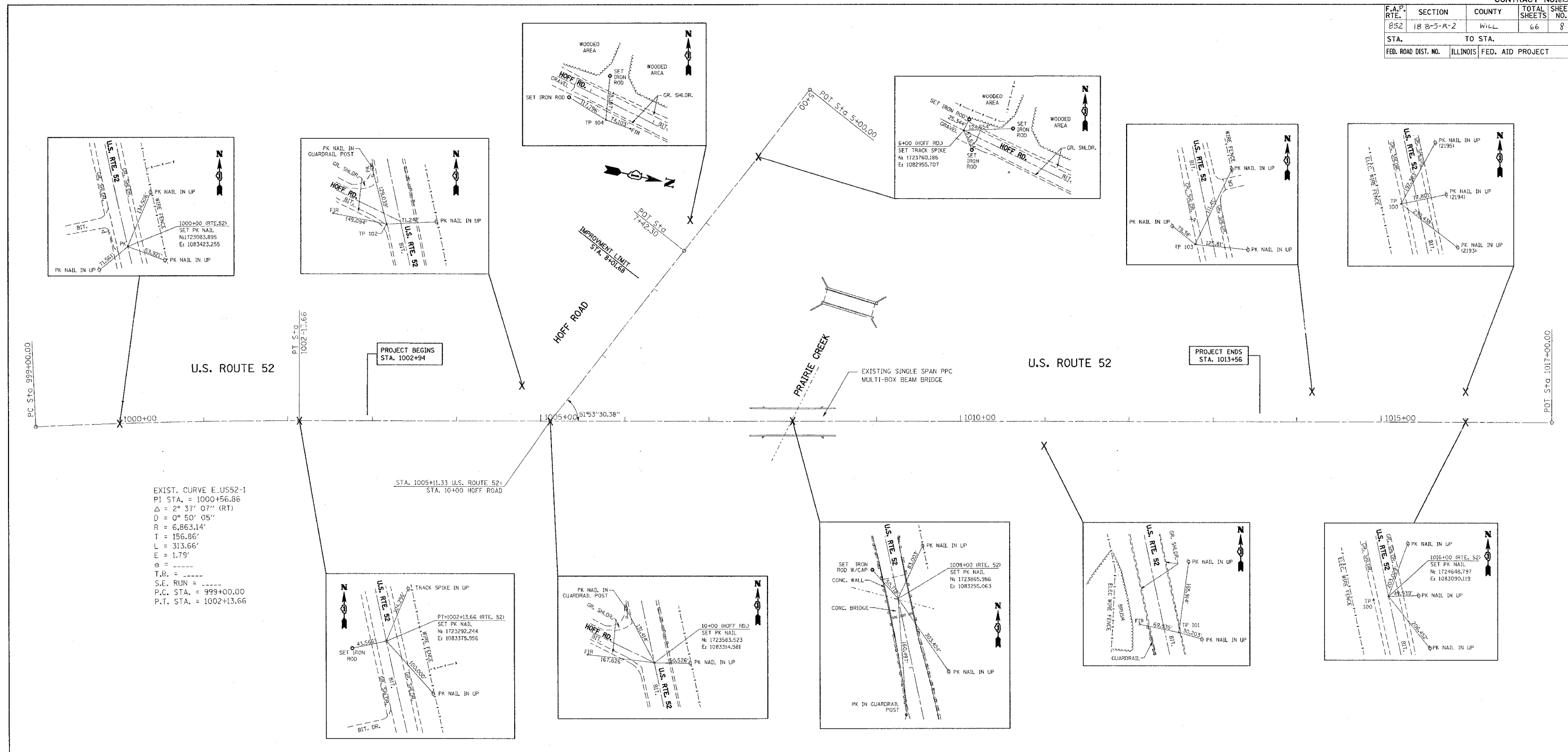


F.A.P. RTE.	SECTION	COUNTY	TOTAL SHEETS	SHEET NO.
052	18 B-5-R-2	WILL	66	8
STA.		TO STA.		
FED. ROAD DIST. NO.		ILLINOIS FED. AID PROJECT		



EXIST. CURVE E-US52-1
 PI STA. = 1000+56.86
 $\Delta = 2^\circ 37' 07''$ (RT)
 $D = 0^\circ 50' 05''$
 $R = 6,863.14'$
 $T = 156.86'$
 $L = 313.66'$
 $E = 1.79'$
 $\theta = \dots$
 $T.R. = \dots$
 $S.V.E. RUN = \dots$
 $P.C. STA. = 999+00.00$
 $P.T. STA. = 1002+13.66$

BENCHMARKS

BENCHMARK DESCRIPTIONS AND ELEVATIONS
 FROM "WILL COUNTY BENCHMARKS" BOOK
 DATED AUGUST 1998, PAGE 78 AND 80:

BM #6080 CHISLED "□" ON SE WINGWALL OF STATE ST. (U.S. ROUTE 52) BRIDGE OVER MANHATTAN CREEK, IN MANHATTAN, ILLINOIS.
 ELEV. = 672.79 (NAVD 88)

BM #1222 NGS MARKER CONSISTING OF 3/8" DIA. STAINLESS STEEL ROD INSIDE 6" PVC PIPE WITH ALUMINUM ACCESS COVER, #100'S OF SE CORNER OF MANHATTAN-MONEEY RD. AND CEDAR RD.
 ELEV. = 723.772 (NGS AE 2482) (NAVD 88)

SET NEW BENCHMARKS

BM #1 FOUND TRACK SPIKE IN WEST FACE OF UTILITY POLE #17' SW OF SOUTH CORNER OF CHAINLINK FENCE AROUND GAS UTILITY
 ELEV. = 658.718

BM #2 FOUND CUT "□" ON TOP OF SOUTH END OF WEST BRIDGE WALL OVER PRAIRIE CREEK ON ROUTE 52
 ELEV. = 658.660

BM #3 SET TRACK SPIKE IN WEST FACE OF UTILITY POLE (THIRD POLE SOUTH OF PRAIRIE CREEK)
 ELEV. = 668.635

BM #4 SET CUT "□" AT THE BOTTOM OF THE WEST BRIDGE WALL OF ABANDONED RAILROAD BRIDGE, APPROX. IN THE MIDDLE
 ELEV. = 659.655

REVISIONS	
NAME	DATE

ILLINOIS DEPARTMENT OF TRANSPORTATION
**U.S. RTE. 52 OVER PRAIRIE CREEK
 ALIGNMENT, TIES AND
 BENCHMARK PLAN**

SCALE: VERT. NONE
 HORIZ. NONE
 DATE 6/13/2005

DRAWN BY
 CHECKED BY

PLOT DATE = 6/13/2005
 FILE NAME = c:\projects\01458881\wll_rtd\p1.dwg
 PLOT SCALE = 50.0000 / 1 IN.
 USER NAME = jhrakd